

THE UNIVERSITY OF CHICAGO

ARCHAEOLOGY AND HISTORICAL PROBLEMS OF THE
SECOND INTERMEDIATE PERIOD

VOLUME V

A DISSERTATION SUBMITTED TO
THE FACULTY OF THE DIVISION OF THE HUMANITIES
IN CANDIDACY FOR THE DEGREE OF
DOCTOR OF PHILOSOPHY

DEPARTMENT OF NEAR EASTERN LANGUAGES
AND CIVILIZATIONS

BY

BRUCE WILLIAMS

CHICAGO, ILLINOIS

DECEMBER 1975

PART VI

PALESTINE AND SYRIA IN THE MIDDLE BRONZE

II AND III AGES: ILLUSTRATIONS

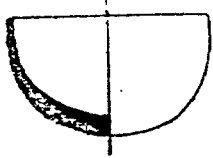
Fig. 241.--Byblos: Pottery from the Royal Tombs
Tufnell, "Pottery from the Royal Tombs of Byblos".

Fig. 2:

- a. No. 2.
- b. No. 3
- c. No. 5
- d. No. 8
- e. No. 9
- f. No. 14

Fig. 3:

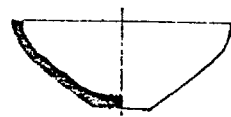
- g. No 17
- h. No 21
- i. No 23
- j. No 28



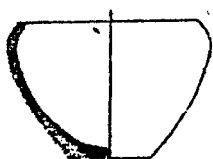
a



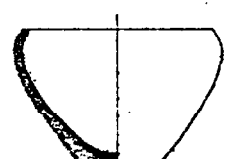
b



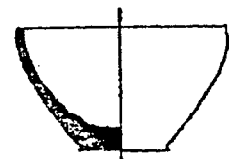
c



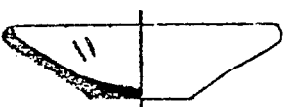
d



e



f



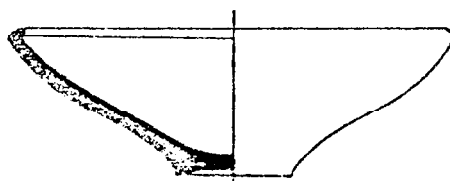
g



h



i



j

Fig. 242.--Byblos: Pottery from the Royal Tombs (Cont.)

Tufnell, "Pottery from the Royal Tombs of Byblos".

Fig. 3:

a. No. 30

b. No. 31

Fig. 4:

c. No. 32

d. No. 34

e. No. 35

f. No. 36

g. No. 39

h. No. 41

i. No. 43

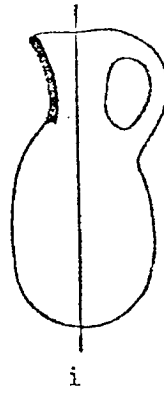
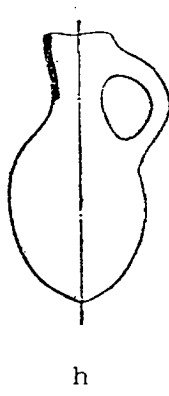
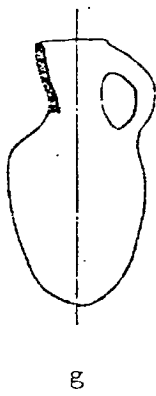
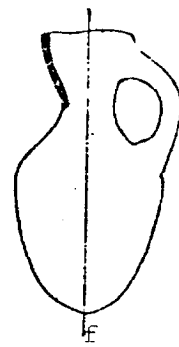
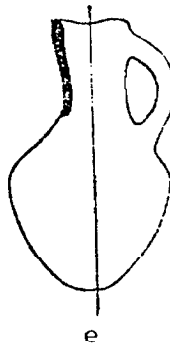
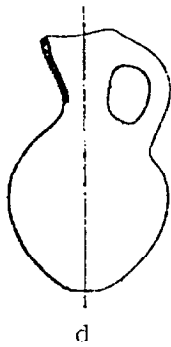
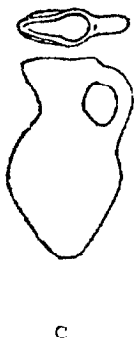
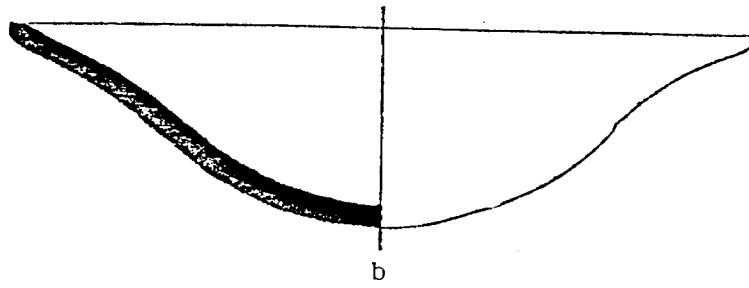
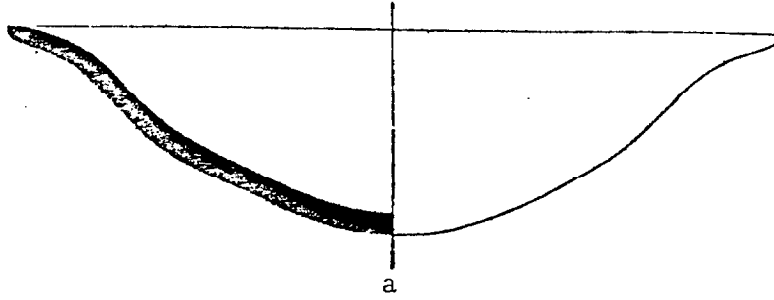


Fig. 243.--Byblos: Pottery from the Royal Tombs (Cont.)

Tufnell, "Pottery from the Royal Tombs of Byblos".

Fig. 4:

a. No. 44

b. No. 45

c. No. 46

d. No. 47

Fig. 5:

e. No. 49

f. No. 48

g. No. 55

Fig. 6:

h. No. 53

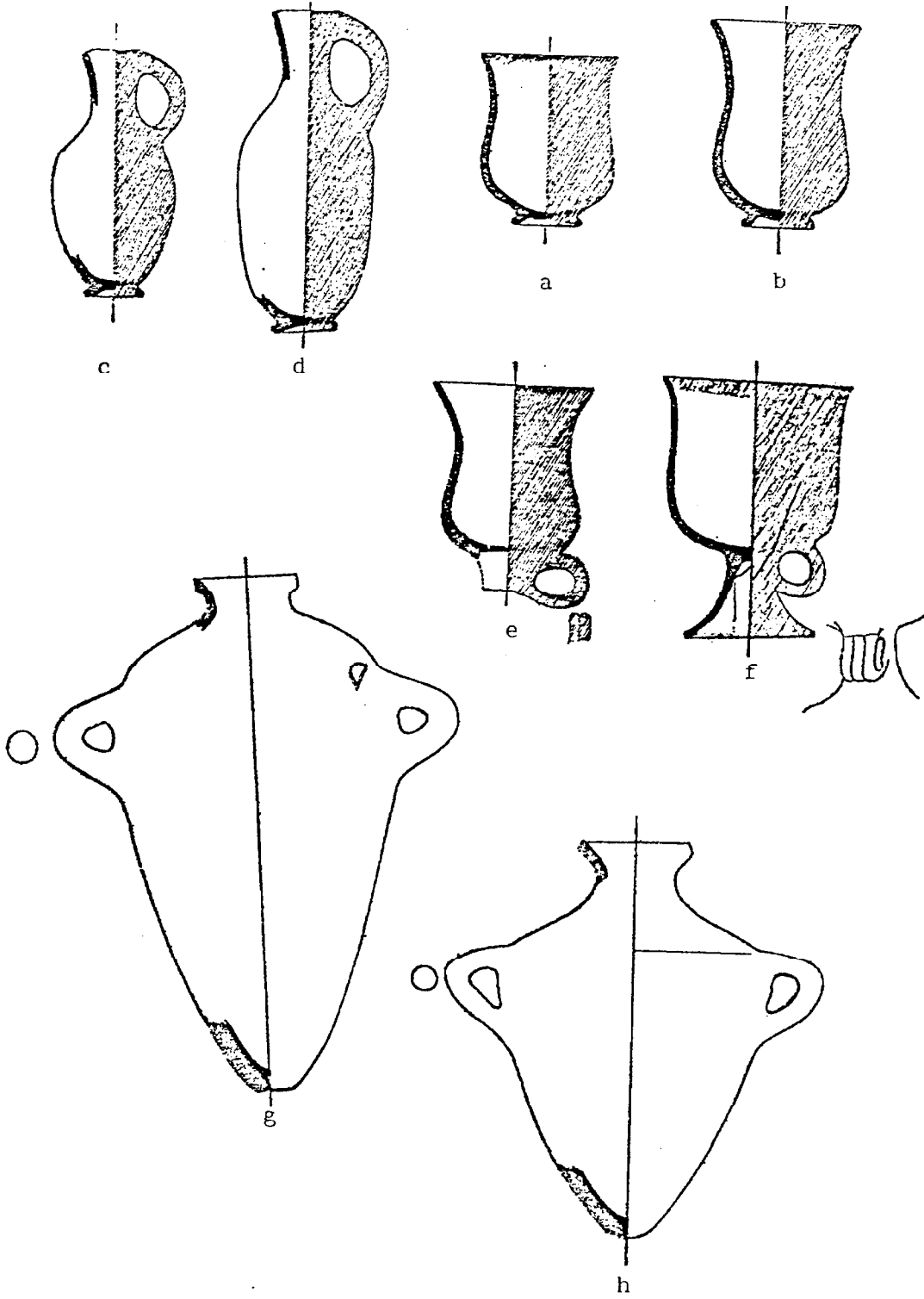


Fig. 244.--Byblos: Pottery from the Royal Tombs (Cont.)

Tufnell, "Pottery from the Royal Tombs of Byblos".

Fig. 5:

a. No. 50

b. No. 52

c. No. 51

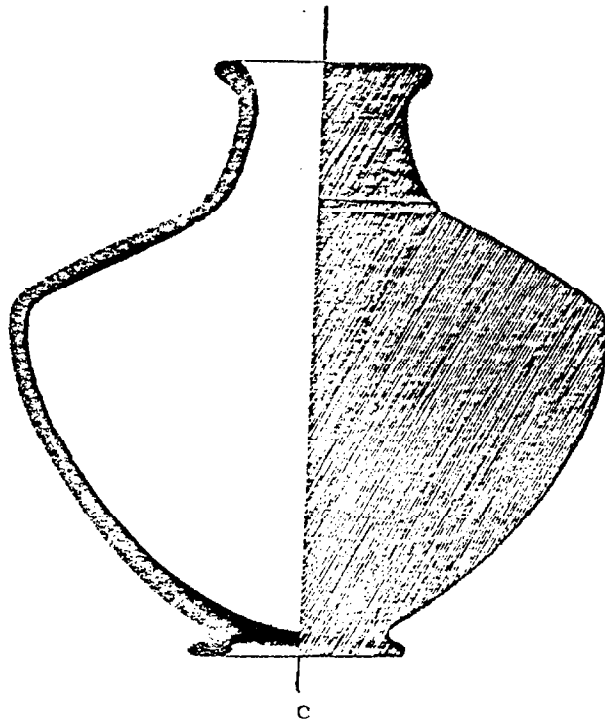
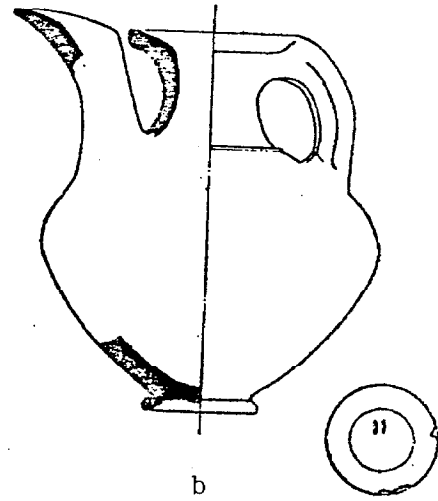
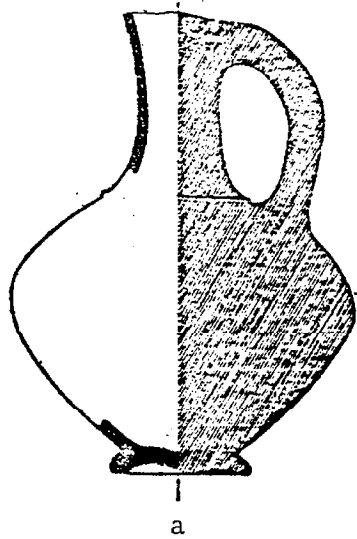


Fig. 245.--Byblos: Pottery from the Royal Tombs (Cont.)

Tufnell, "Pottery from the Royal Tombs of Byblos".

- a. Fig. 6 No. 57
- b. Fig. 7 No. 58
- c. Fig. 7 No. 60

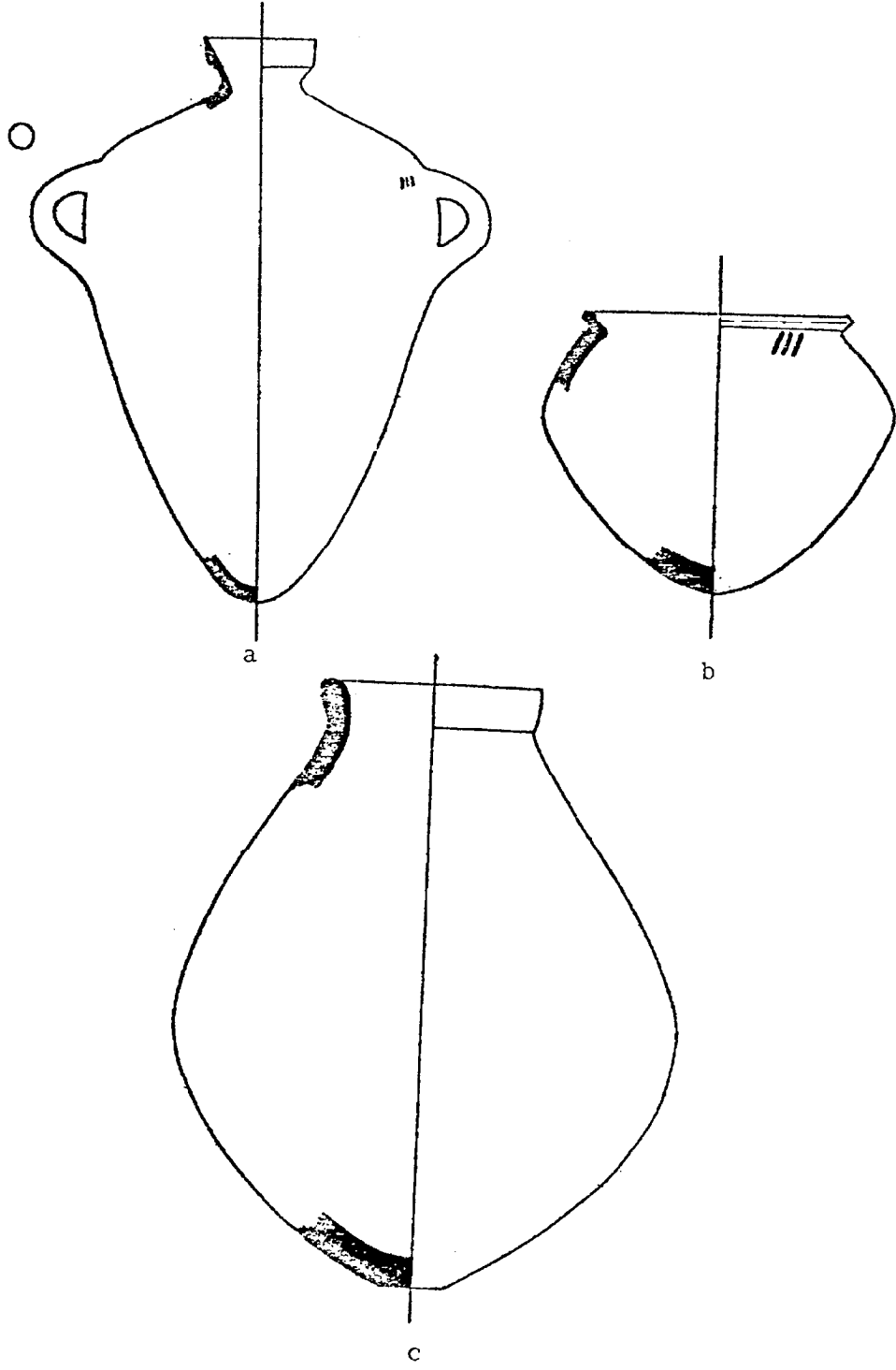


Fig. 246. Byblos: Pottery of the MB II A 1 from the Town

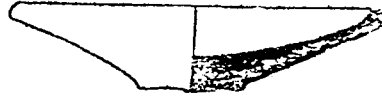
Dunand, Fouilles de Byblos II.

- a. Part 2 Fig. 584
- b. Part 2 Fig. 584
- c. Part 2 Fig. 584
- d. Part 1 Fig. 167
- e. Part 1 Fig. 167
- f. Part 1 Fig. 167
- g. Part 1 Fig. 86
- h. Part 2 Fig. 564
- i. Part 1 Fig. 467
- j. Part 1 Fig. 467



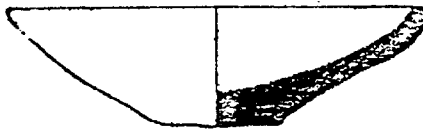
12092

a



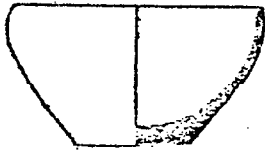
12399

b



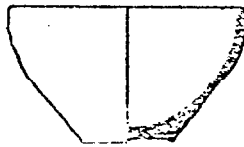
12397

c



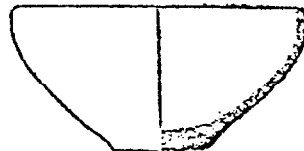
8026

d



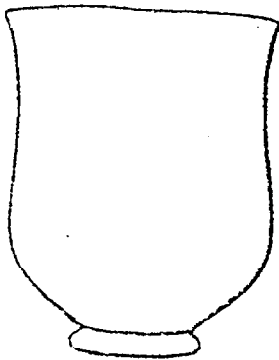
8033

e



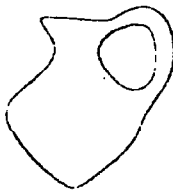
8034

f



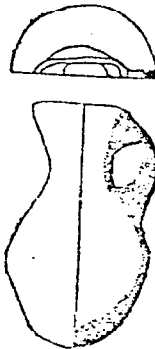
7398

g



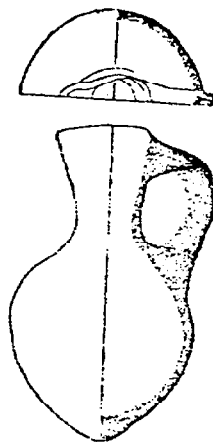
12150

h



11267 ter

i



10190

j

Fig. 247.--Byblos: Pottery of the MB II A 1 from the Town (Cont.)

Dunand, Fouilles de Byblos II.

- a. Part 2 Fig. 517
- b. Part 1 Fig. 354
- c. Part 1 Fig. 354
- d. Part 2 Fig. 601
- e. Part 2 Fig. 601
- f. Part 2 Fig. 1092
- g. Part 2 Fig. 601

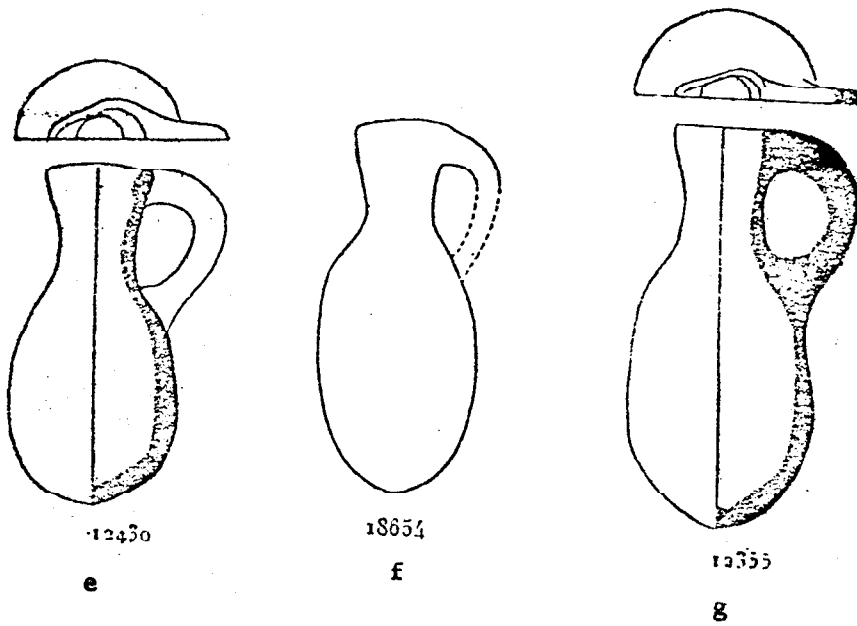
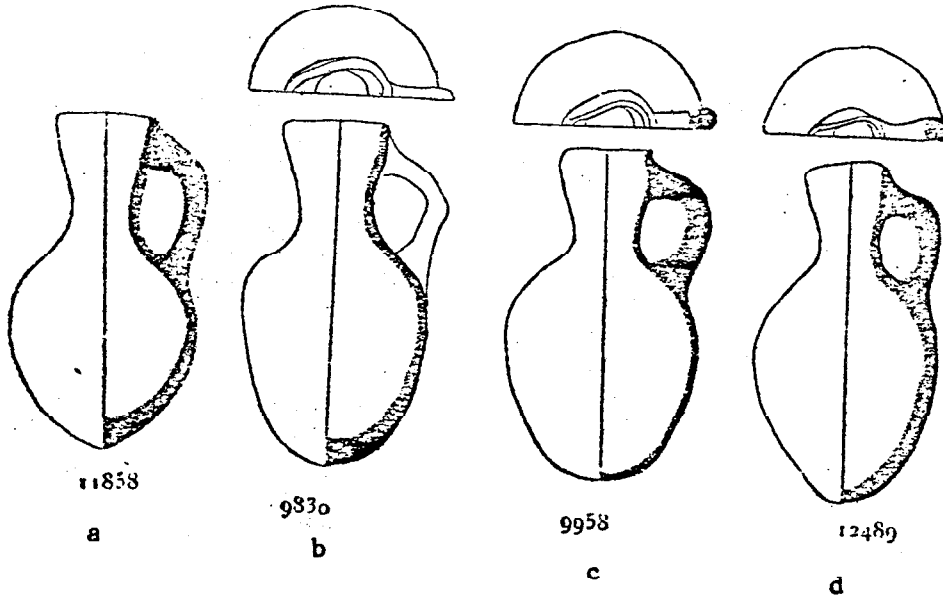
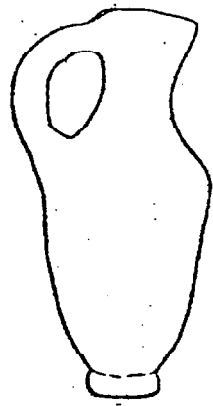


Fig. 248.--Byblos: Pottery of the MB II A 1 from the Town (Cont.)

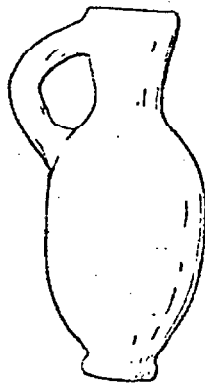
Dunand, Fouilles de Byblos II.

- a. Part 1 Fig. 41
- b. Part 1 Fig. 294
- c. Part 2 Fig. 1093
- d. Part 1 Fig. 405



7003

a



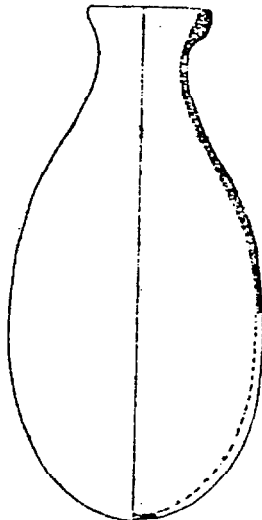
936r

b



18028 bis

c



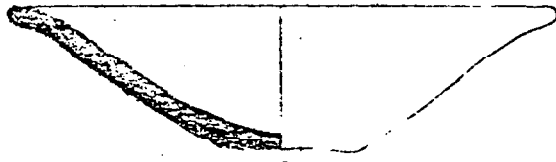
1019+

d

Fig. 249.--Byblos: Undecorated Pottery of the MB II A 2, the Phase of the Deposits

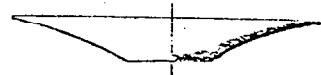
Dunand.

- a. Fouilles de Byblos II, Part 2, Fig. 584
- b. Fouilles de Byblos II, Part 2, Fig. 1153
- c. Fouilles de Byblos II, Part 2, Fig. 807
- d. Fouilles de Byblos II, Part 2, Fig. 807
- e. Fouilles de Byblos I, Fig. 218
- f. Fouilles de Byblos II, Part 1, Fig. 482
- g. Fouilles de Byblos II, Part 1, Fig. 482
- h. Fouilles de Byblos II, Part 2, Fig. 564
- i. Fouilles de Byblos II, Part 2, Fig. 517



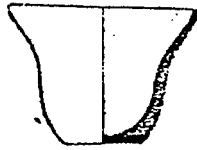
12398

a



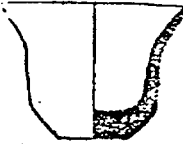
18030

b



14636

c



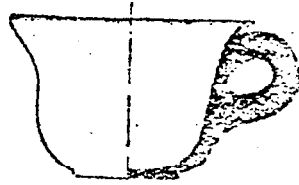
14649

d



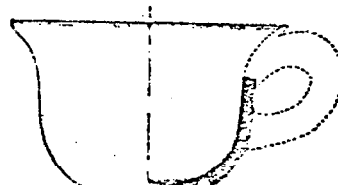
3591

e



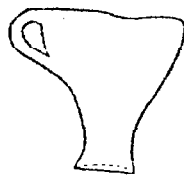
f

11452



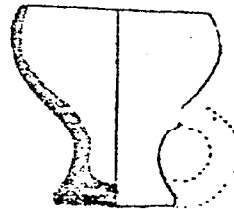
11453

g



12839

h



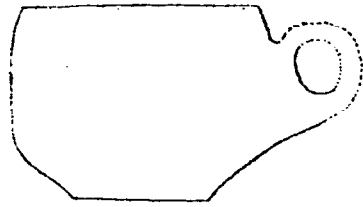
11839

i

Fig. 250.--Byblos: Undecorated Pottery of the MB II A 2, the
Phase of the Deposits (Cont.)

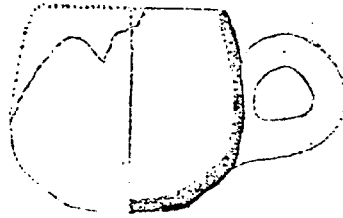
Dunand, Fouilles de Byblos II.

- a. Part 1, Fig. 385
- b. Part 1, Fig. 385
- c. Part 2, Fig. 1153
- d. Part 2, Fig. 517
- e. Part 2, Fig. 807
- f. Part 1, Fig. 405
- g. Part 1, Fig. 302
- h. Part 2, Fig. 571



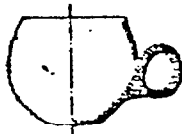
10227

a



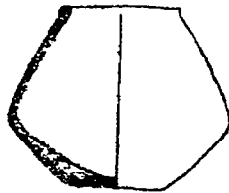
11201

b



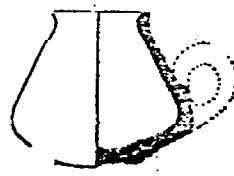
18926

c



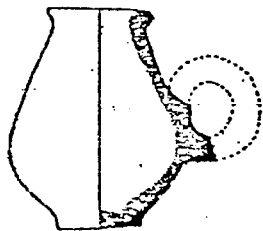
11857

d



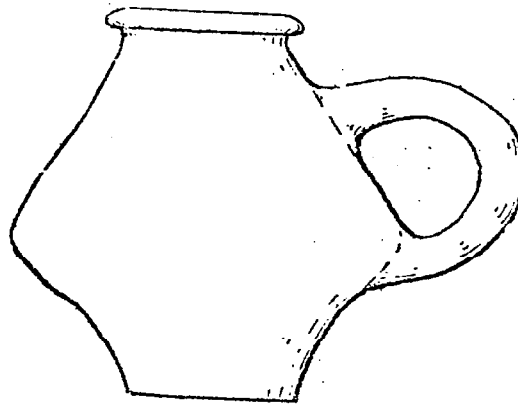
14244

e



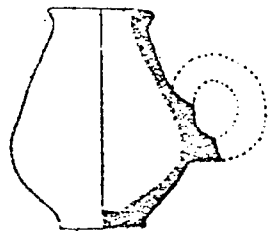
10488

f



9334

g



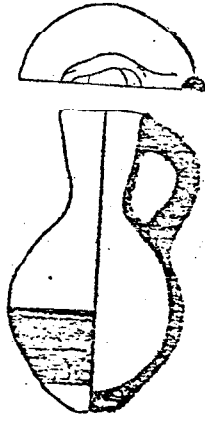
12409

h

Fig. 251.--Byblos: Undecorated Pottery of the MB II A 2, the
Phase of the Deposits (Cont.)

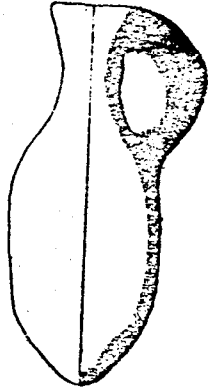
Dunand, Fouilles de Byblos II.

- a. Part 1, Fig. 406
- b. Part 2, Fig. 601
- c. Part 2, Fig. 601
- d. Part 1, Fig. 354
- e. Part 1, Fig. 406
- f. Part 1, Fig. 354
- g. Part 1, Fig. 294



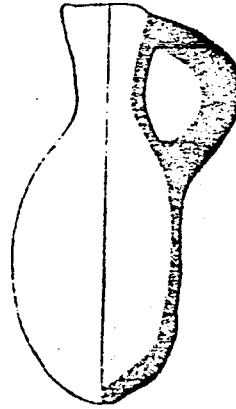
10507

a



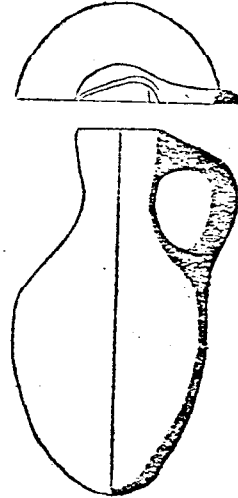
12738

b



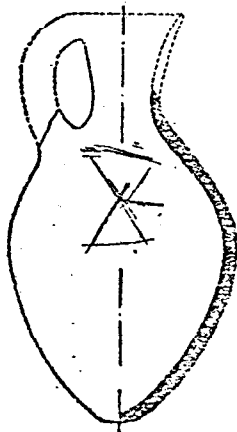
12721

c



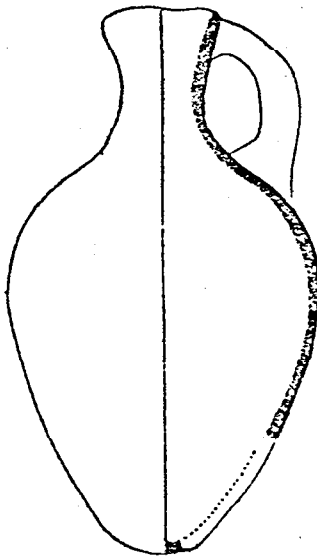
9850

d



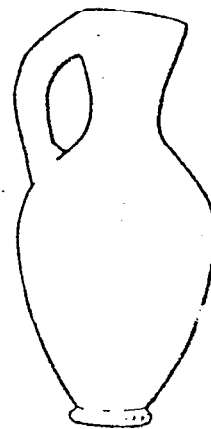
10887

e



9987

f



9200

g

Fig. 252.--Byblos: Decorated Pottery of the MB II A 2, the
Phase of the Deposits

Dunand.

- a. Fouilles de Byblos II, Part 1, Fig. 196
- b. Ibid.
- c. Ibid.
- d. Ibid., Part 2, Fig. 1153
- e. Fouilles de Byblos I, Fig. 178
- f. Ibid., Fig. 565
- g. Ibid., Fig. 919
- h. Ibid., Fig. 668

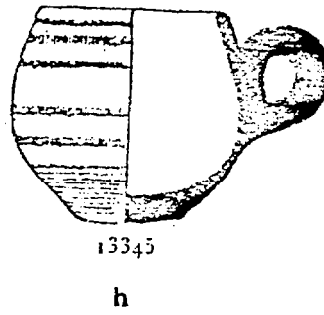
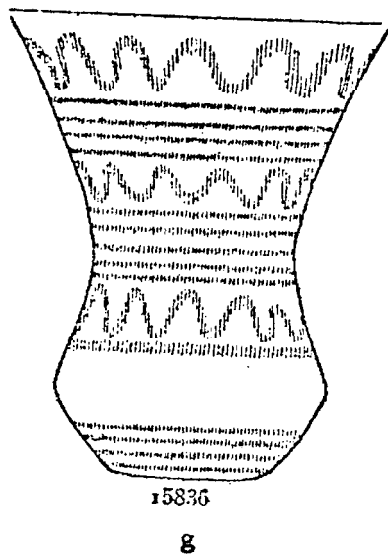
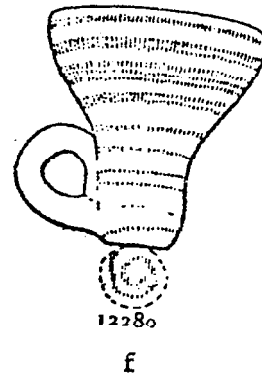
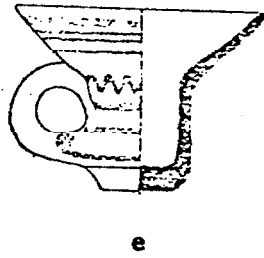
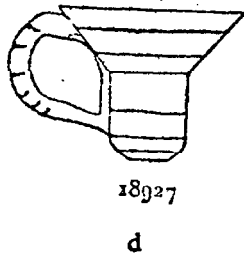
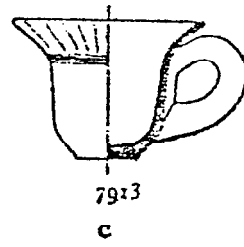
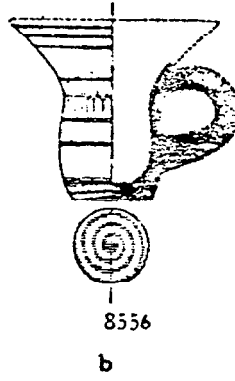
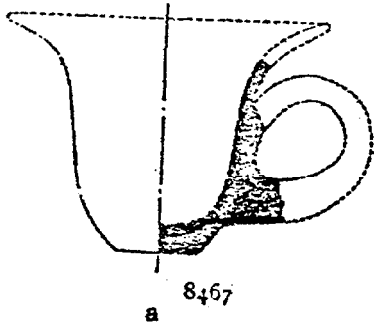
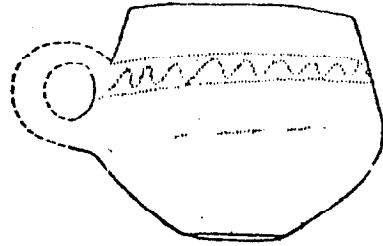


Fig. 253.--Byblos: Decorated Pottery of the MB II A 2, the
Phase of the Deposits (Cont.)

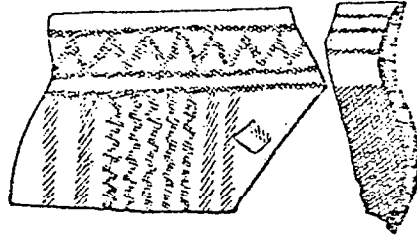
Dunand. Fouilles de Byblos II.

- a. Part 2, Fig. 1054
- b. Part 2, Fig. 1054
- c. Part 1, Fig. 341
- d. Part 2, Fig. 598
- e. Part 2, Fig. 598



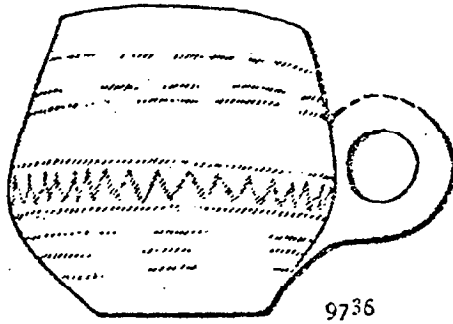
17692

a



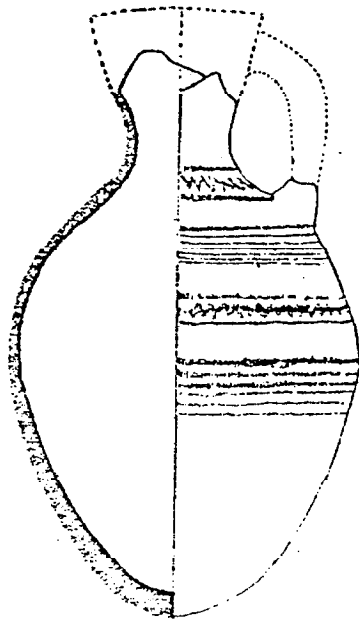
17605

b



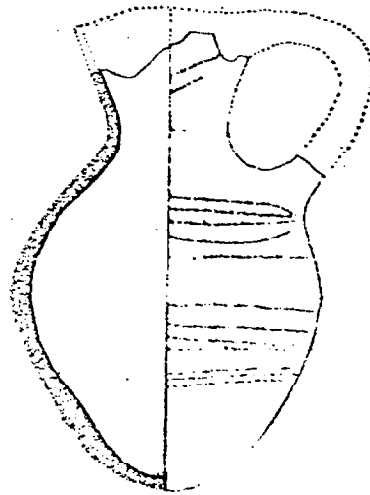
9736

c



12472

d



12098

e

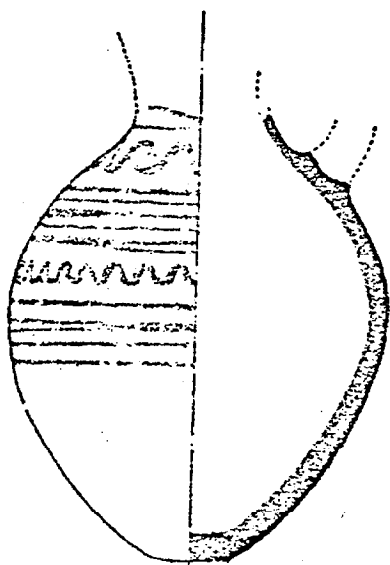
Fig. 254.--Byblos: Decorated Pottery of the MB II A 2, the
Phase of the Deposits (Cont.)

Dunand.

a. Fouilles de Byblos II, Part 1, pp. 445-446

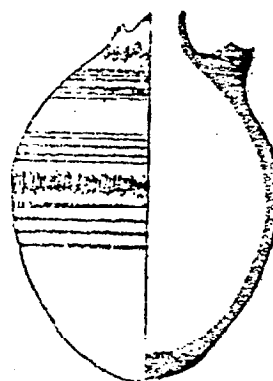
b. *Ibid.*, Fig. 457

c. Fouilles de Byblos I, Fig. 229



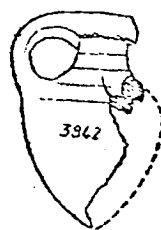
11420

a



11267 bis

b



3942

c

Fig. 255.--Byblos: Censers and Pottery from a Single Locus,
MB II A 2

Dunand, Fouilles de Byblos I.

a. Fig. 233

b. Fig. 233

c. Fig. 233

d. Fig. 235

e. Fig. 236

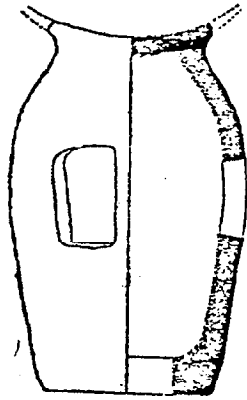
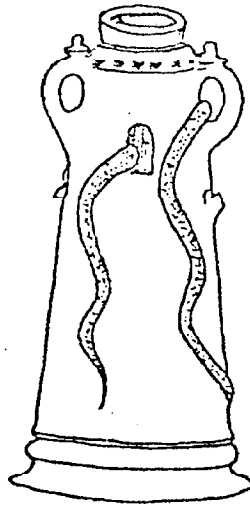


Fig. 233.

a



b

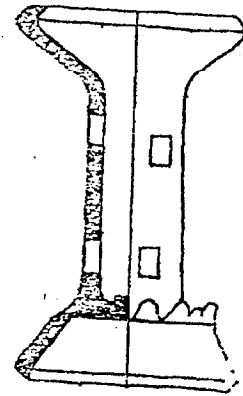
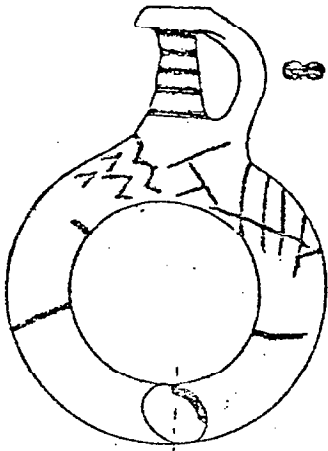
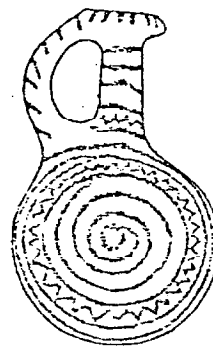


Fig. 234.

c



d



e



Fig. 256.--Byblos: Pottery of the MB II A 2, the Deposits
Dunand, Fouilles de Byblos II.

- a. Part 1, Fig. 375
- b. Part 1, Fig. 148
- c. Part 1, Fig. 234
- d. Part 1, Fig. 413
- e. Part 2, Fig. 1151
- f. Part 2, Fig. 928
- g. Part 1, Fig. 192

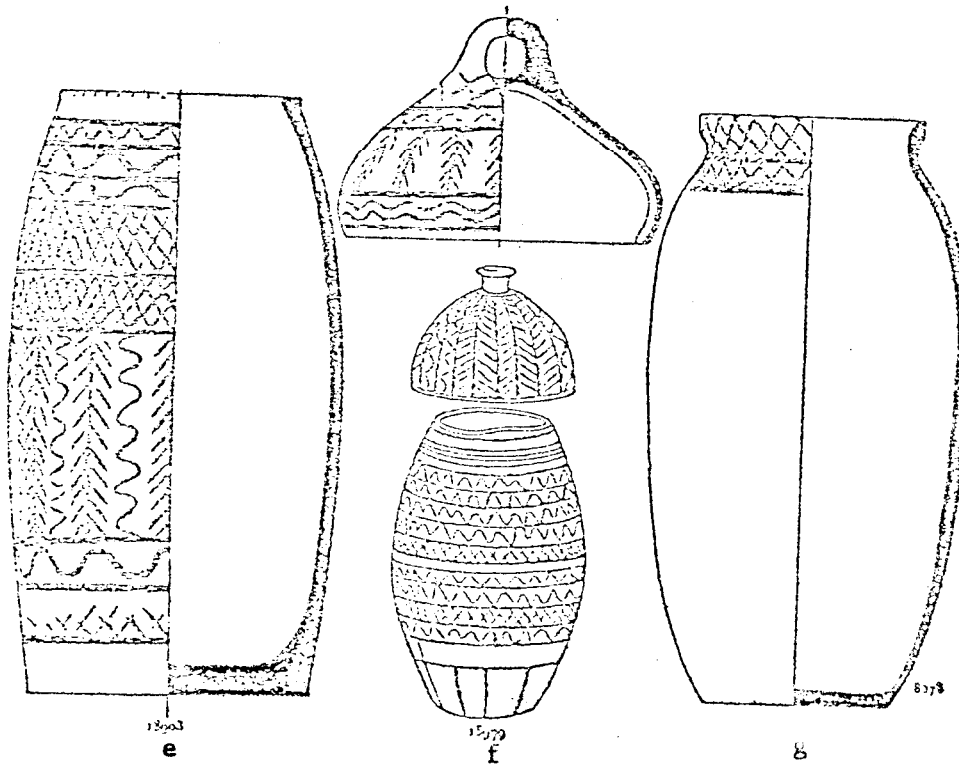
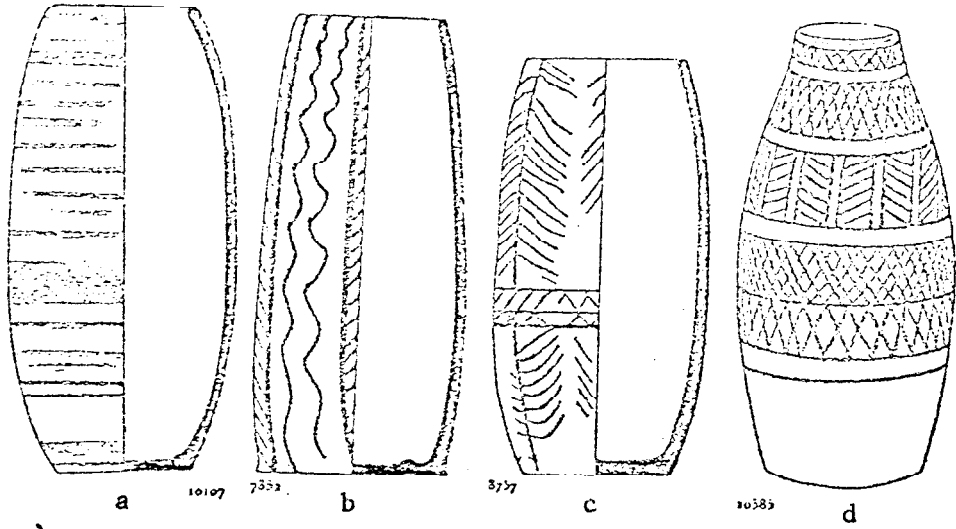
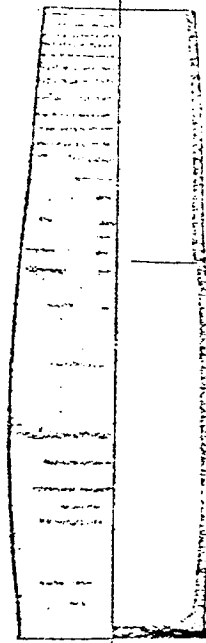


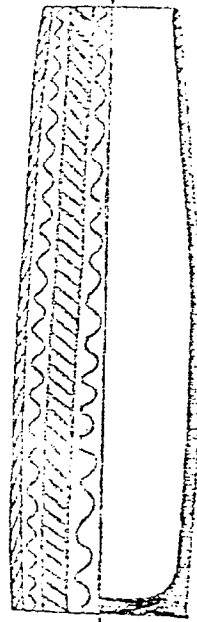
Fig. 257.--Byblos: Pottery of the MB IIA 2, the Deposits
Dunand.

- a. Fouilles de Byblos II, Part 1, Fig. 332
- b. Ibid., Fig. 319
- c. Fouilles de Byblos I, Fig. 53
- d. Ibid., Fig. 54
- e. Fouilles de Byblos II, Part 2, Fig. 276



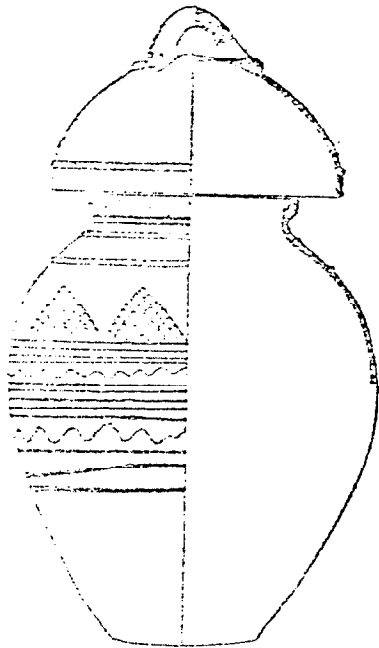
9617

a

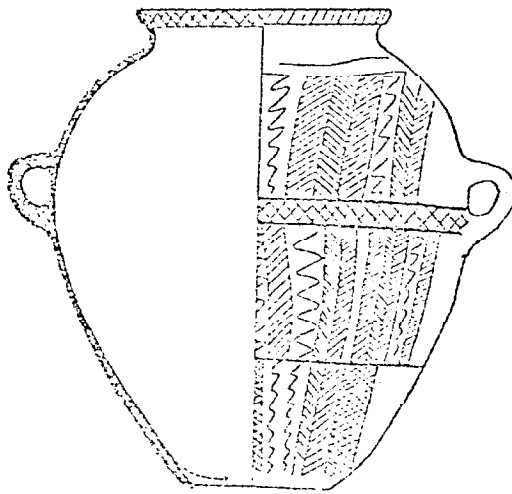


9605

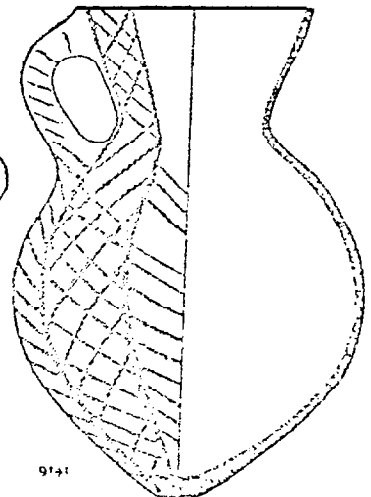
b



c



d



9741

e

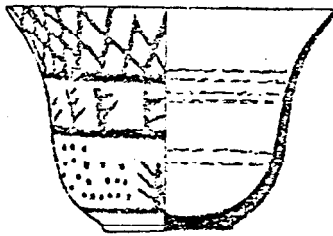
Fig. 258.--Byblos: Aegean Pottery

Dunand, Fouilles de Byblos I.

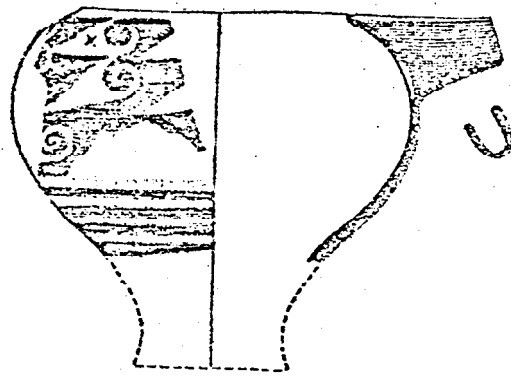
a. Fig. 251

b. Fig. 178

1312



a



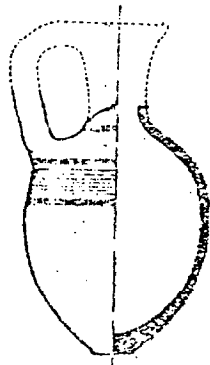
256

b

Fig. 259.--Byblos: Later Pottery of MB II - III Date

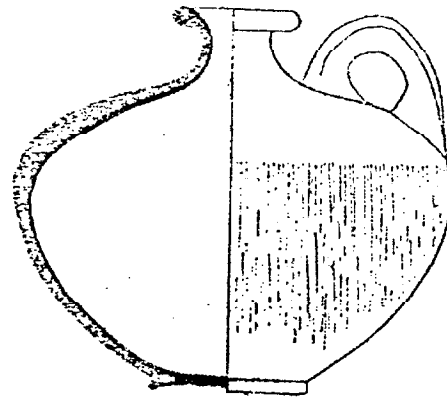
Dunand.

- | | |
|-----------------------|---|
| a. MB II B | <u>Fouilles de Byblos II</u> , Part 1, Fig. 406 |
| b. MB II B - II A | Ibid., Part 2, Fig. 801 |
| c. MB III A | Ibid., Part 1, Fig. 205 |
| d. MB III A | Ibid., Part 2, Fig. 383 |
| e. MB III A | Ibid., Fig. 675 |
| f. MB III A | <u>Fouilles de Byblos I</u> , Fig. 169 |
| g. MB III A - B Early | <u>Fouilles de Byblos II</u> , Part 2, Fig. 537 |
| h. MB III A - B Early | Ibid. |



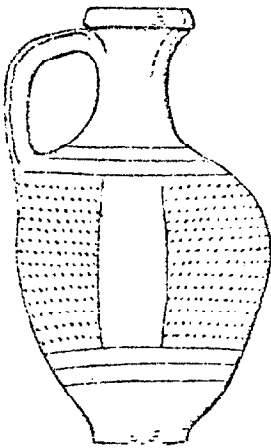
10882

a



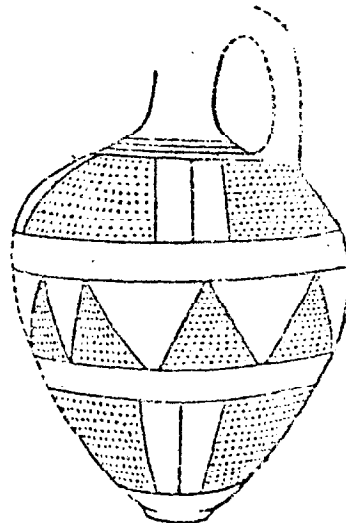
11211

b



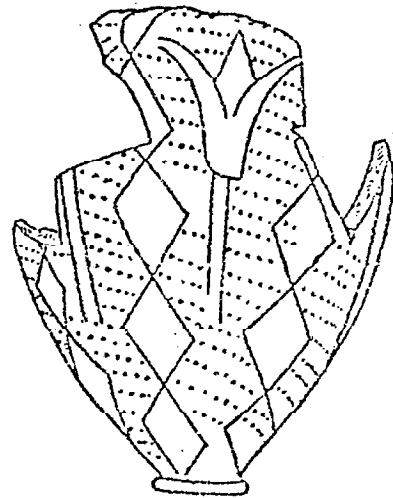
8521

c



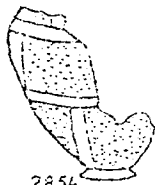
12396

d



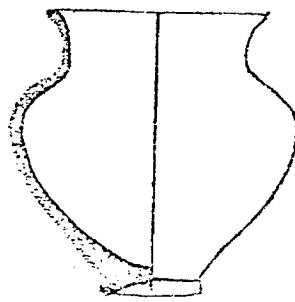
13199

e



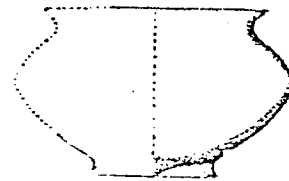
2854

f



12031

g



12805

h

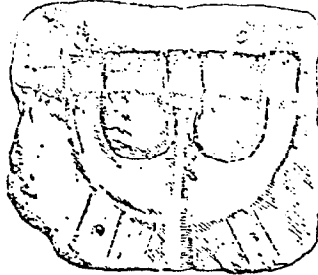
Fig. 260.--Byblos: Molds for Weapons

Dunand.

- a. Stopped and tanked crescentic axe No. 5034, Fouilles de Byblos I, Plate CVIII
- b. Three-socket epsilon axe, Fouilles de Byblos II, Part 1, Fig. 5.
- c. Same, No. 7419, Ibid., Plate CLXXXIV.
- d. Anchor axe, Ibid., Part 1, Fig. 17.
- e. Long-socket spearhead
- f. Duck-Bill axe, No. 1061, Fouilles de Byblos I, Plate CVIII
- g. Duck-Bill axe, No. 7402, Fouilles de Byblos II, Plate CLXXXIV
- h. Duck-Bill axe, No. 3067, Fouilles de Byblos I, Plate CVIII
- i. Square-section axe, Fouilles de Byblos II, Part 1; Fig. 5
- j. Square-section axe, No. 8978, Ibid., Plate CLXXXIV



a

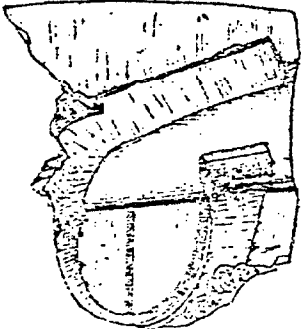


6793

b

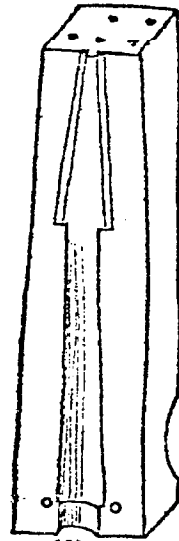


c



6885

d



6558

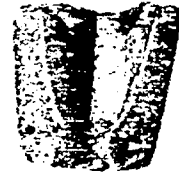
e



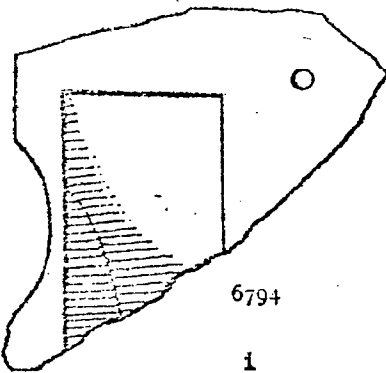
f



g



h



6794

i



j

Fig. 261.--Byblos: Spearheads from the Deposits

Dunand, Fouilles de Byblos II.

a. Part 1, Fig. 320

b. Part 1, Fig. 333

c. Part 1, Fig. 320

d. Part 2, Fig. 872

e. Part 1, Fig. 334

f. Part 1, Fig. 334

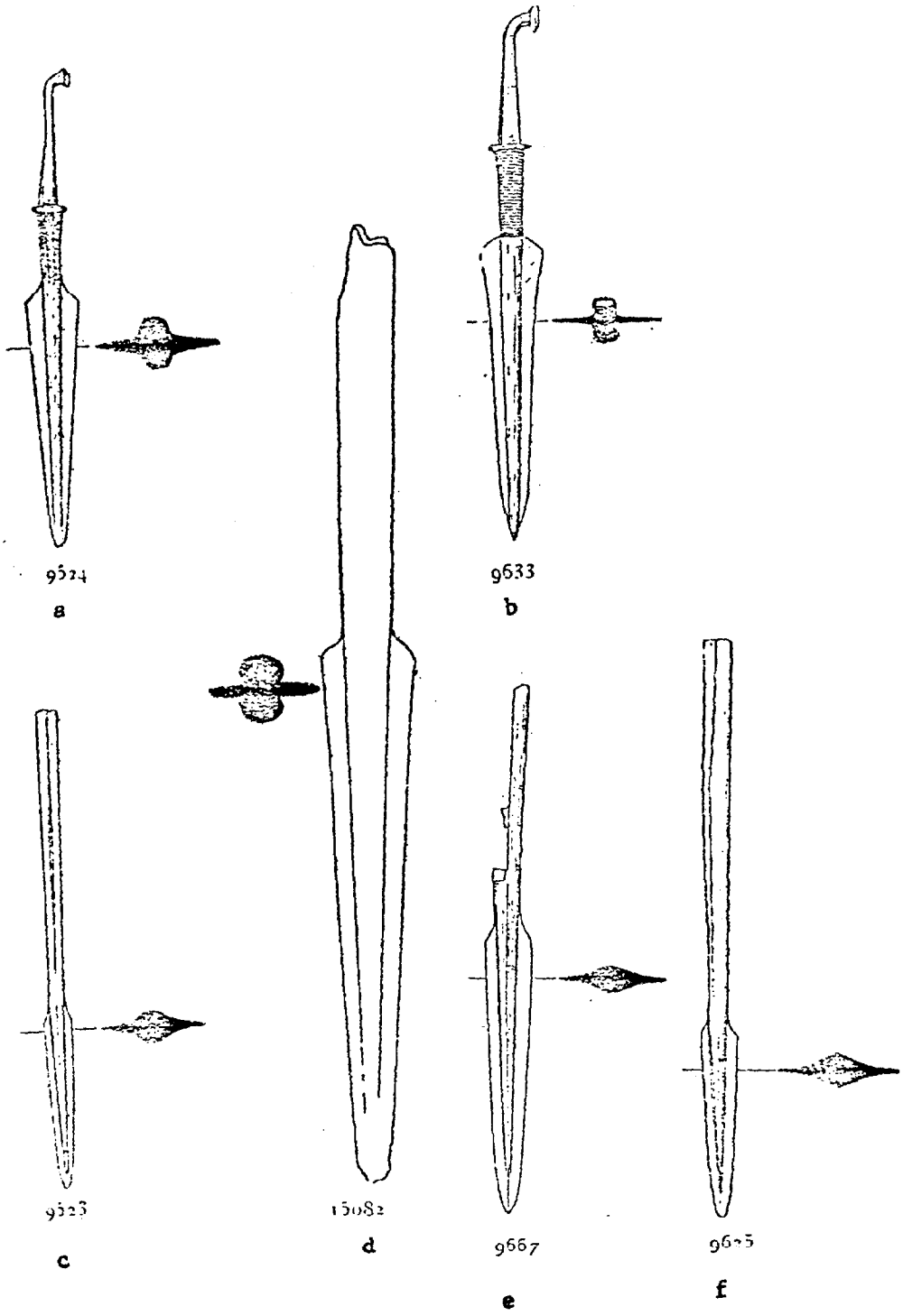


Fig. 262.--Byblos: Weapons from the Deposits

Dunand, Fouilles de Byblos II.

a. Part 1, Fig. 317

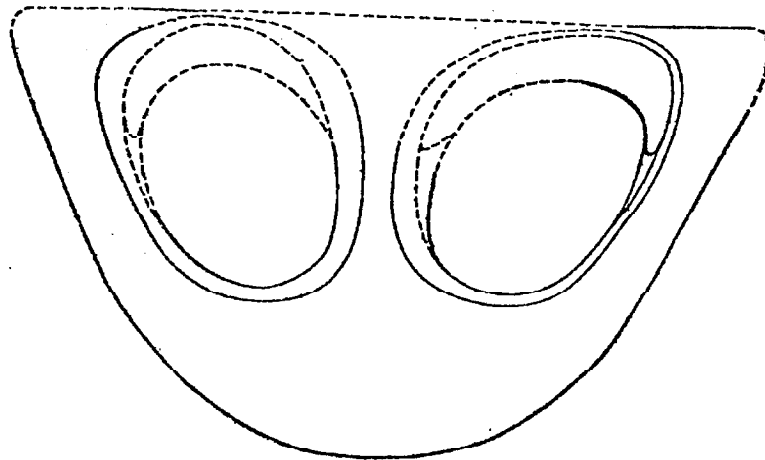
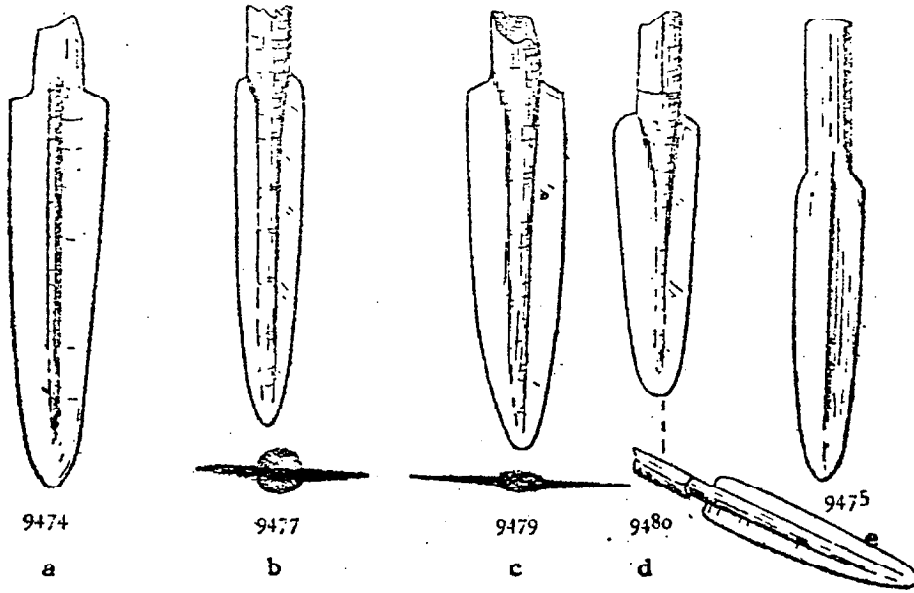
b. Ibid.

c. Ibid.

d. Ibid.

e. Ibid.

f. Part 2, Fig. 831



14441

E

Fig. 263.--Byblos: Ribbed Daggers from the Deposits

Dunand, Fouilles de Byblos II.

- a. Part 1, Fig. 317
- b. Part 2, Fig. 872
- c. Part 1, Fig. 320
- d. Part 1, Fig. 321
- e. Part 1, Fig. 334
- f. Part 1, Fig. 334
- g. Part 1, Fig. 334
- h. Part 1, Fig. 330
- i. Part 1, Fig. 330
- j. Part 1, Fig. 330

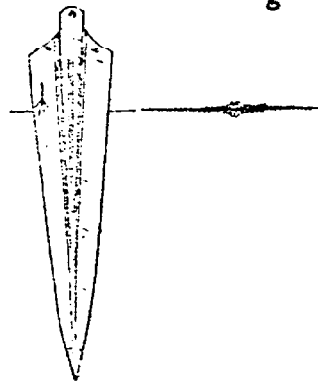
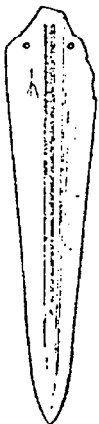
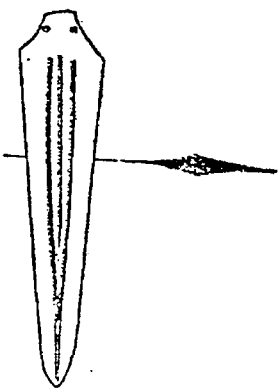
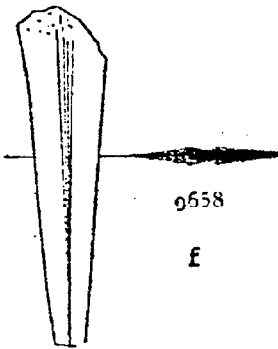
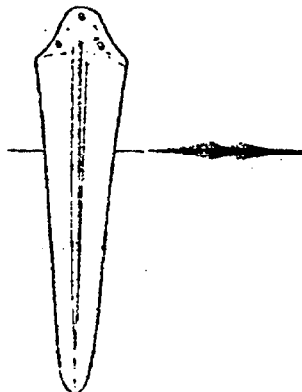
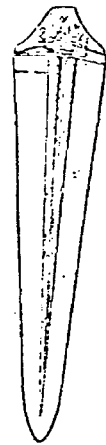


Fig. 264.--Byblos: Daggers from the Deposits

Dunand, Fouilles de Byblos II.

- a. Part 1, Fig. 333
- b. Part 1, Fig. 377
- c. Part 1, Fig. 376
- d. Part 1, Fig. 378
- e. Part 1, Fig. 321
- f. Part 1, Fig. 321
- g. Part 1, Fig. 379
- h. Part 2, Fig. 872

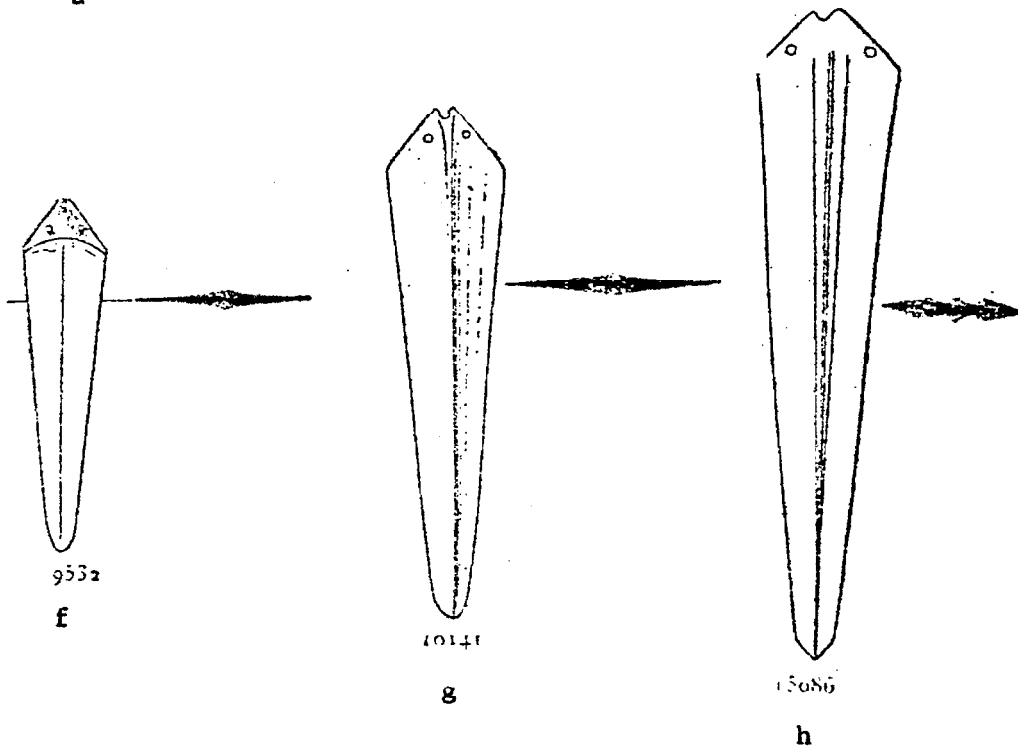
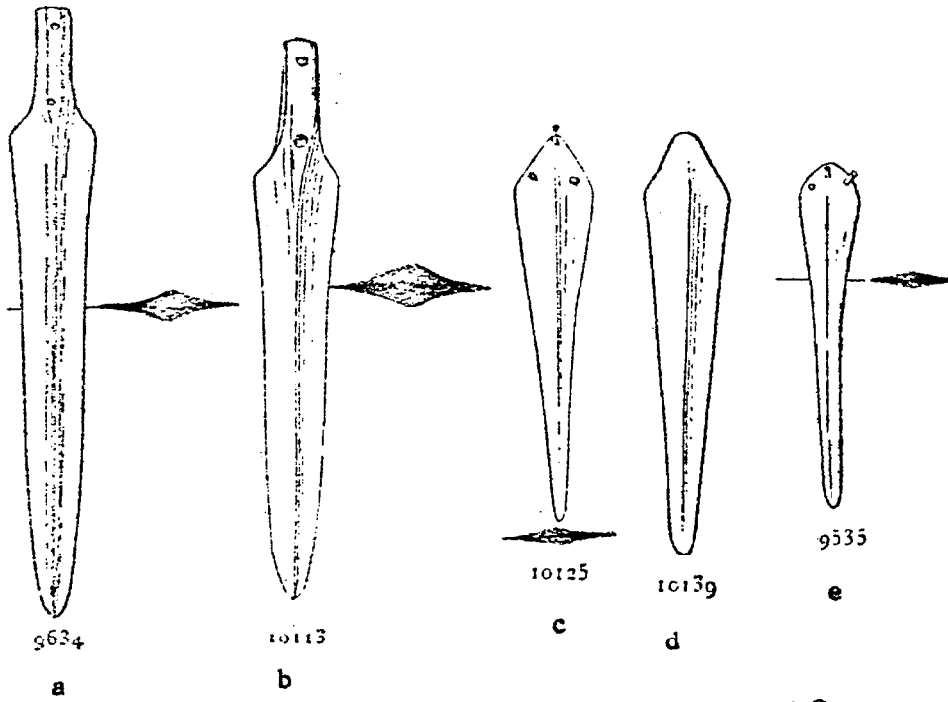


Fig. 265.--Byblos: Daggers and a Sword from the Deposits

Dunand, Fouilles de Byblos II.

a. Part 1, Fig. 334

b. Part 1, Fig. 334

c. Part 1, Fig. 334

d. Part 2, Fig. 873

e. Part 1, Fig. 321

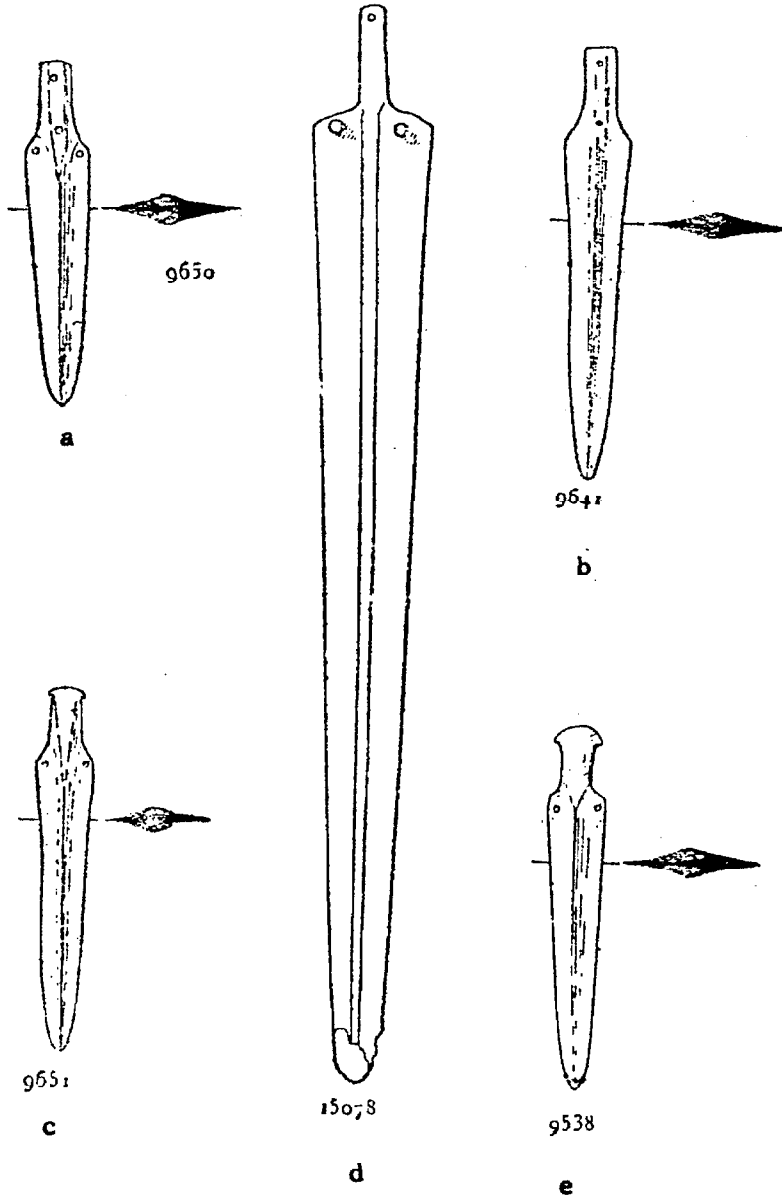
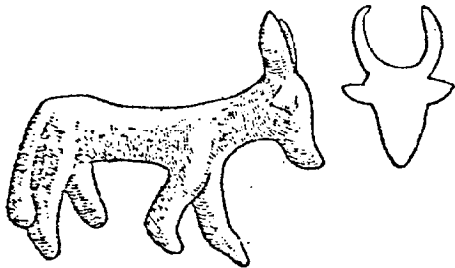


Fig. 266.--Byblos: Copper or Bronze Statuettes from the Deposits

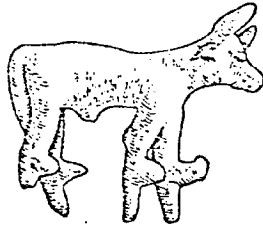
Dunand, Fouilles de Byblos II.

- a. Part 2, Fig. 927
- b. Part 2, Fig. 927
- c. Part 2, Fig. 927
- d. Part 2, Fig. 871
- e. Part 2, Fig. 871
- f. Part 2, Fig. 871
- g. Part 2, Fig. 1152
- h. Part 2, Fig. 871
- i. Part 2, Fig. 871
- j. Part 2, Fig. 871
- k. Part 2, Fig. 871



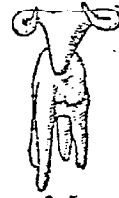
15961

a



15954

b



16759

c



15054

d



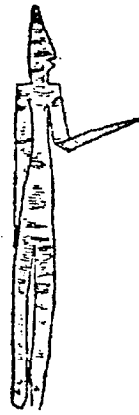
15055

e



15058

f



18920

g



15076

h



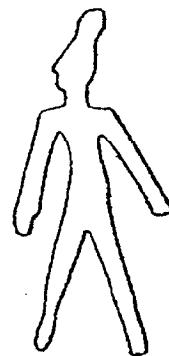
15077

i



15036

j



15037

k

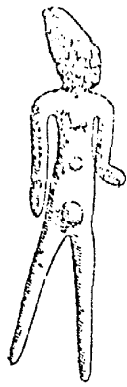
(Cont.) Fig. 267.--Byblos: Copper or Bronze Statuettes from the Deposits
Dunand, Fouilles de Byblos II, Part 1.

Fig. 335:

- a.
- b.
- c.
- d.
- e.

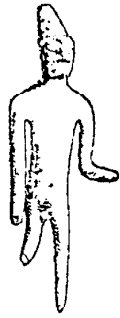
Fig. 377:

- f.
- g.
- h.
- i.
- j.
- k.



9678

a



9679

b



9681

c



9677

d



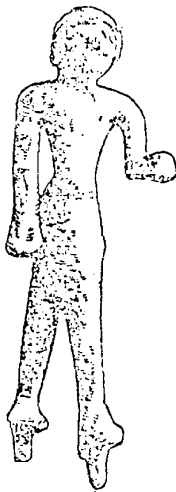
9682

e



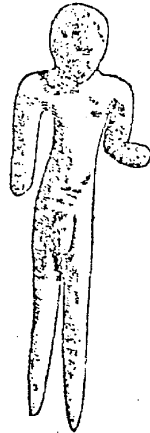
9689

f



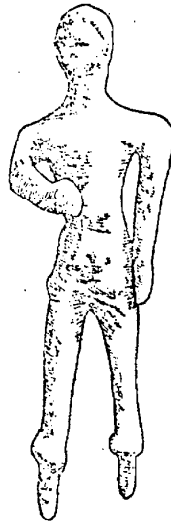
9692

g



9693

h



9701

i



9700

j



9695

k

(Cont.) Fig. 268.--Byblos: Copper or Bronze Statuettes from the Deposits

Dunand.

a. Fouilles de Byblos II, Part 1, Fig. 150

b. Ibid.

c. Ibid.

d. Ibid.

e. Ibid.

f. Ibid.

g. Fouilles de Byblos I,

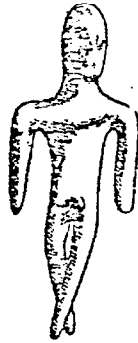
h. Ibid.

i. Fouilles de Byblos II, Part 2, Fig. 930



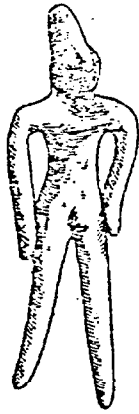
7882

a



7866

b



7864

c



7880

d



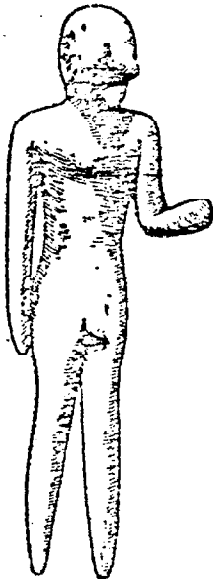
7877

e



7873

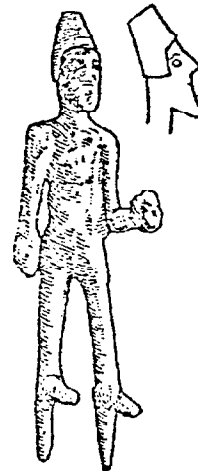
f



g



h



16005

i

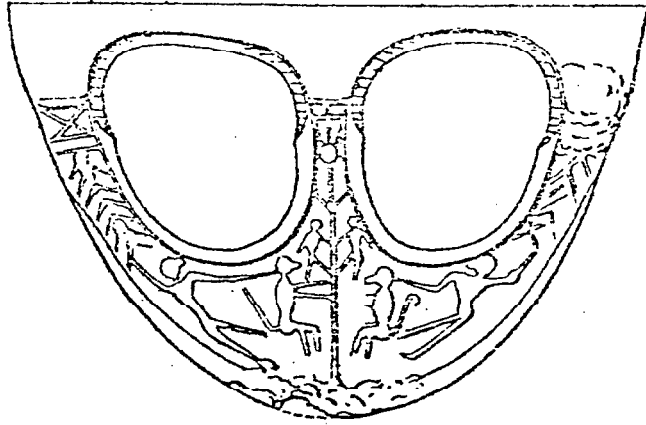
Fig. 269.--Byblos: Fenestrated Axes from the Deposits

Dunand, Fouilles de Byblos II.

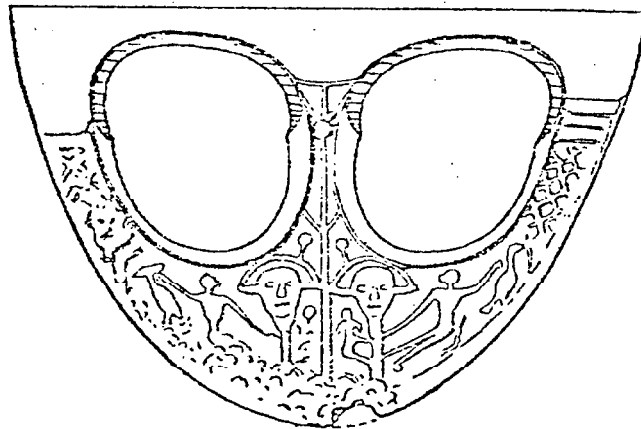
a. 10823

b. reverse, same

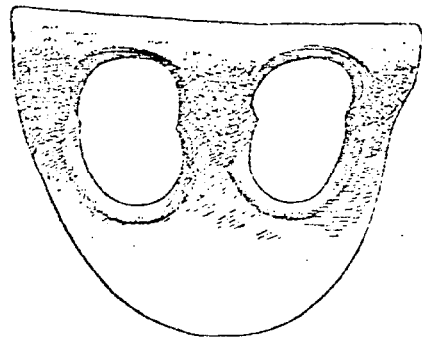
c. Part 1, Fig. 338



a



b



9797

c

Fig. 270.--Byblos: A Decorated Fenestrated Axe from the Deposits
Dunand. Fouilles de Byblos II, Plate CXIX.



14434



14434

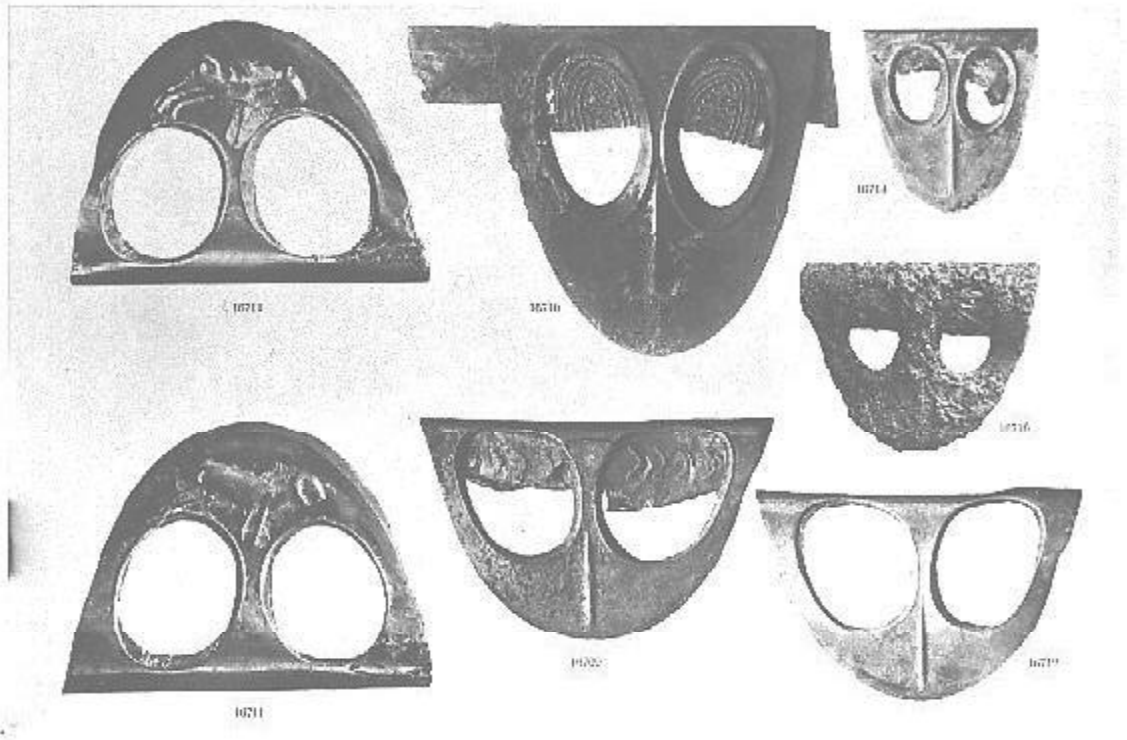
Temple aux obélisques. Dépôt d'offrandes de l'angle N.-O. de la cour (14433-14500).
Hache en or.

Fig. 271.--Byblos: Fenestrated Axes from the Deposits

Dunand, Fouilles de Byblos II.

a. Plate CXXXVII

b. Plate CXX

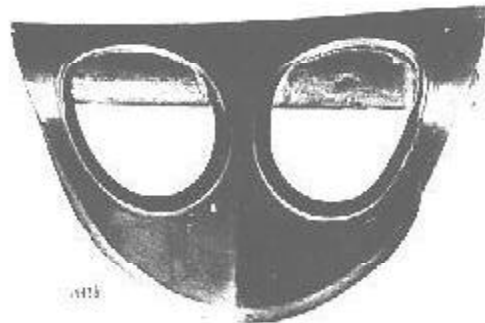


a

FOULLEY OF EYELIDS II

10717

10718



b

Fig. 272.~Byblos: A Fenestrated Axe and Gold Haft Decoration
from the Deposits

Dunand, Fouilles de Byblos II, Plate CXXXII.



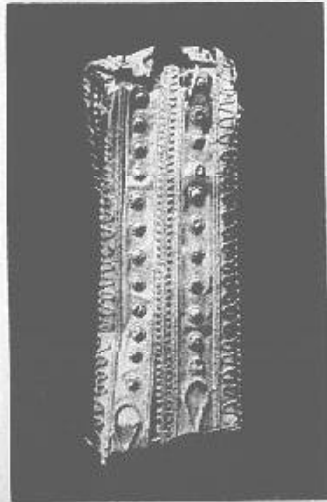
16700



16717



16700

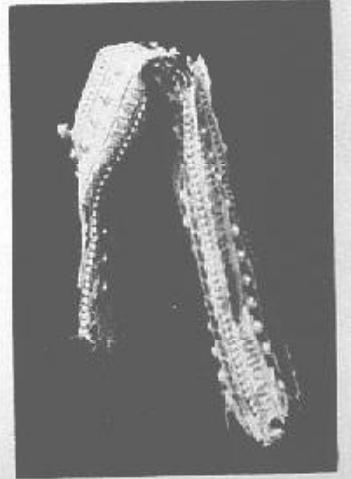


16698



16702

16701



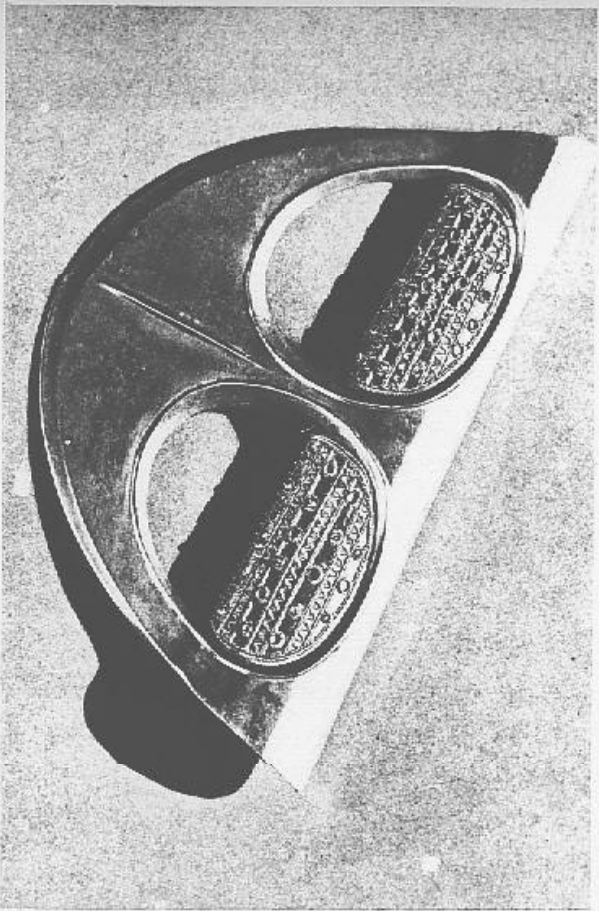
16698

Fig. 273.--Byblos: Axes of Gold from the Deposits

Dunand, Fouilles de Byblos II.

- a. A fenestrated axe of gold, Plate CXXI
- b. A gold axe with granulation and encrusted gems, Plate CXXXV

b



a

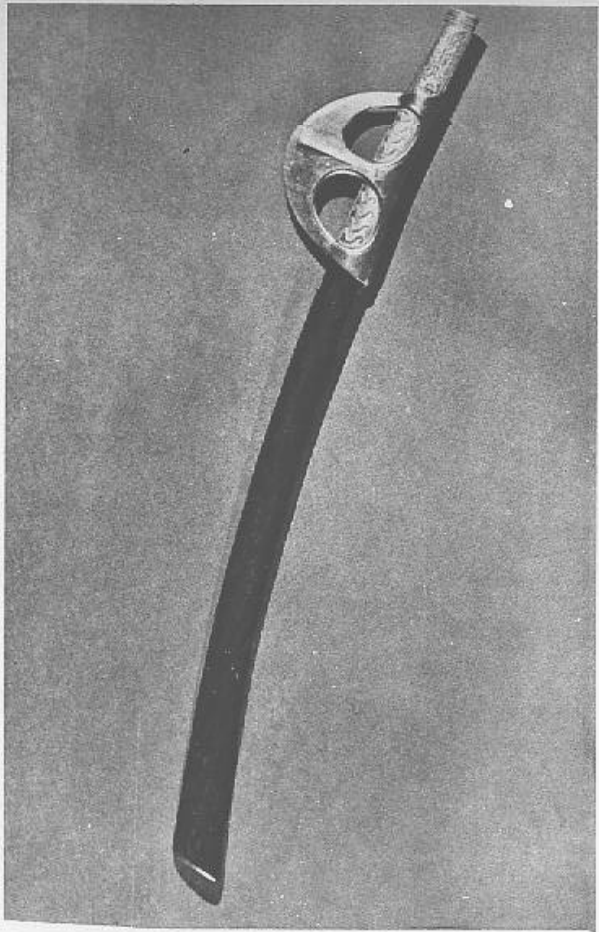
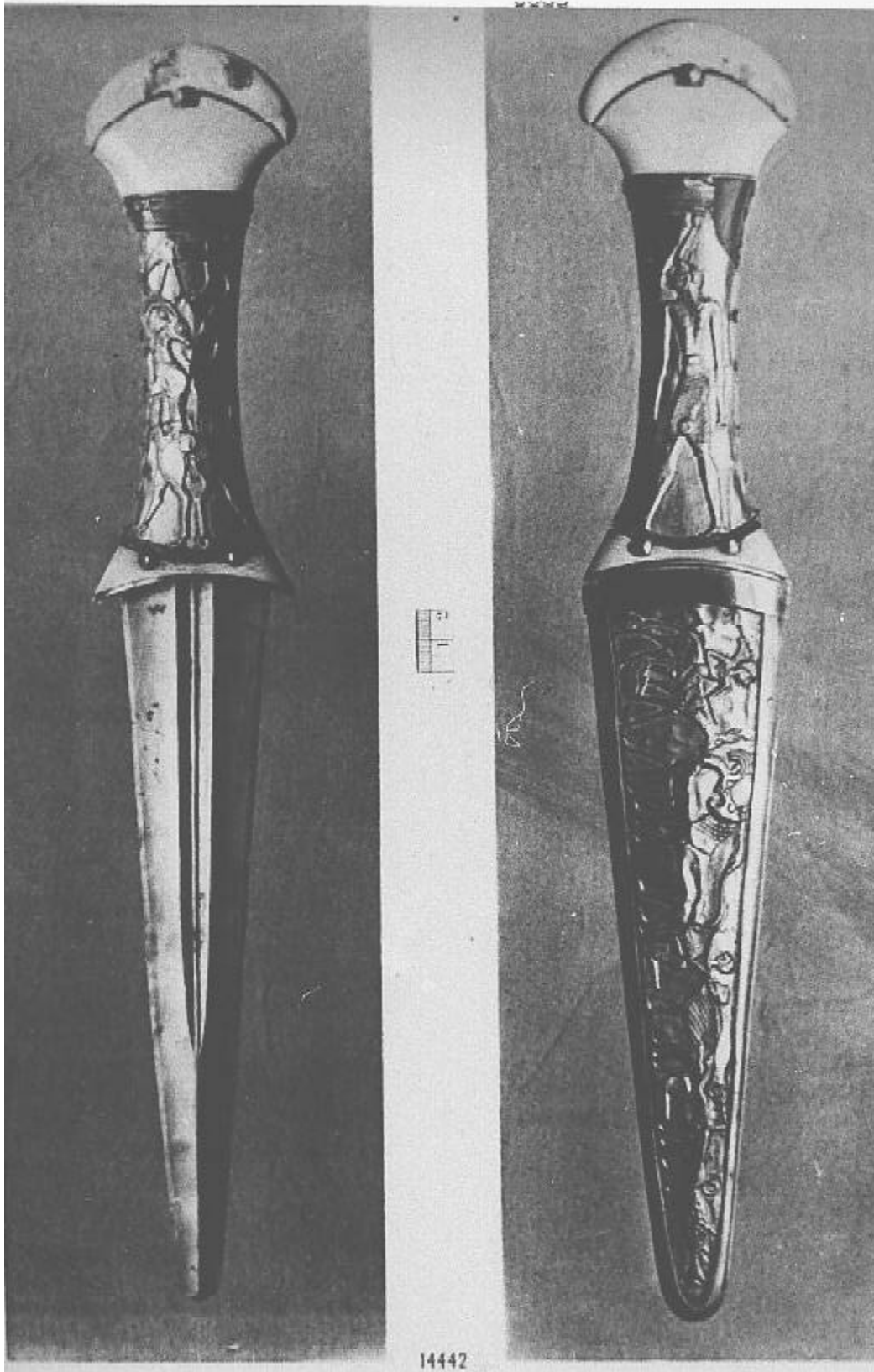


Fig. 274.--Byblos: The Byblos Dagger
Dunand, Fouilles de Byblos II, Plate CXVIII.

1344



14442

Fig. 275.--Byblos: A Statuette of High Quality, a Vessel of Gold and a Roundel of Gold from the Deposits.

Dunand, Fouilles de Byblos II.

a. Plate CXV

b. Plate CXXXVI

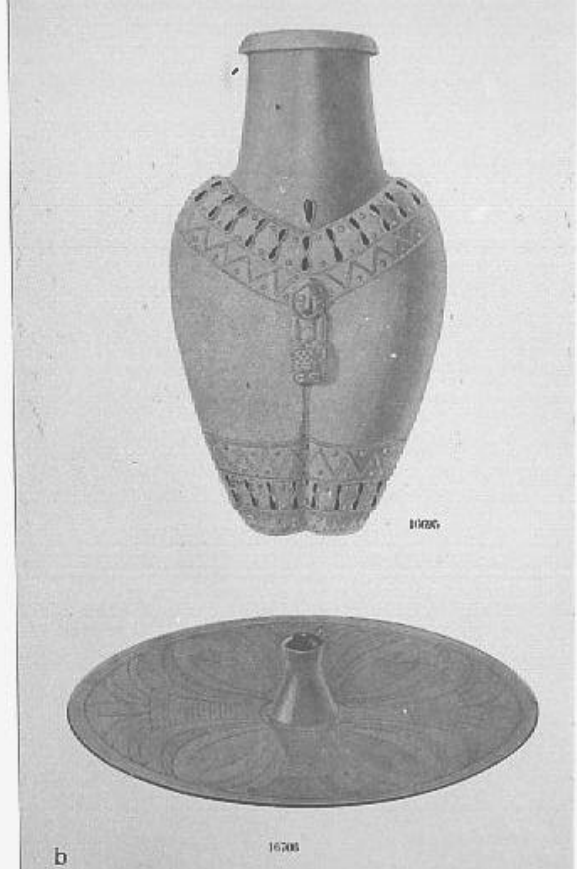


Fig. 276.--Byblos: Faiences from a Deposit in the Obelisk Temple

Dunand, Fouilles de Byblos II.

a. Plate CXI

b. Plate C

FIGURES DE SYDÈS. 2

Pl. LXI



15187



15189



15190



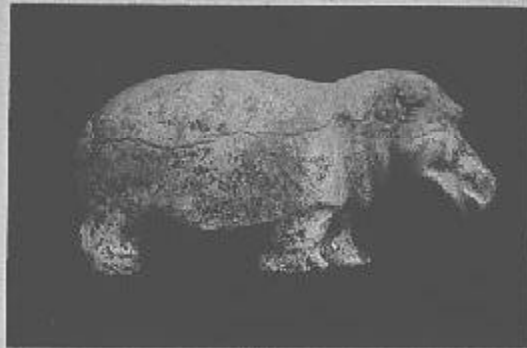
15191



15192



15193



15121



15125



15127

Fig. 277.--Byblos: Faiences from a Deposit in the Obelisk Temple
(Cont.)

Dunand, Fouilles de Byblos II.

a. Plate CXII

b. Plate CII

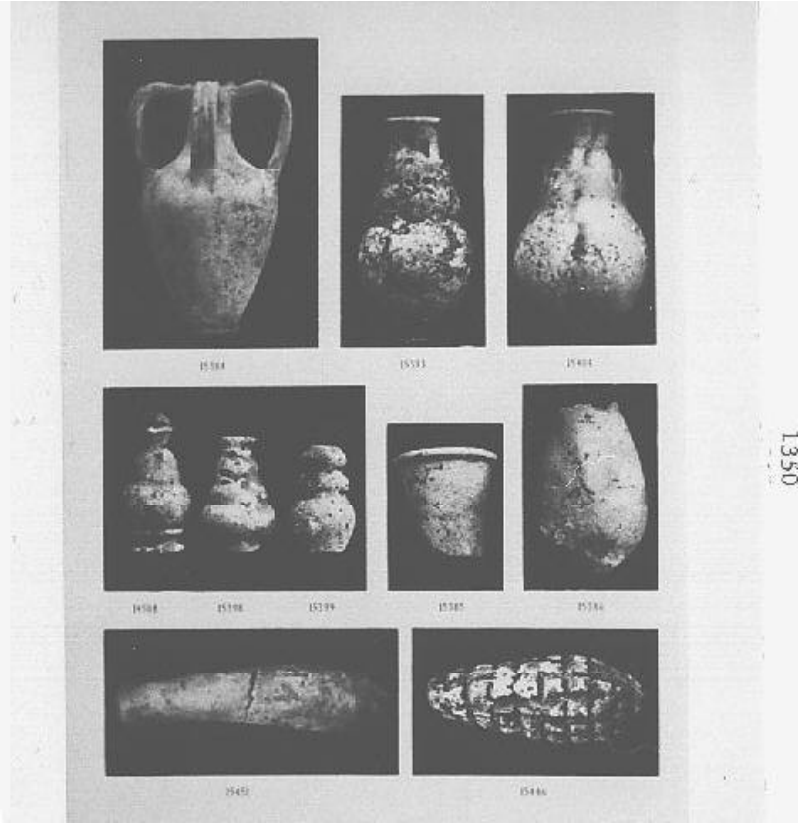


Fig. 278.--Byblos: Faiences from a Deposit in the Obelisk Temple
(Cont.)

Dunand, Fouilles de Byblos II.

a. Plate XCVII

b. Plate CVII



15217



15218



15219



15220



15221



15222



15223



15224



15225



15226



15227



15228



15229



15230



15231



15232



15233



15234



15235



15236

Fig. 279.--Byblos: Faiences from a Deposit in the Obelisk Temple
(Cont.)

Dunand, Fouilles de Byblos II.

a. Plate XCIX

b. Plate XCVI

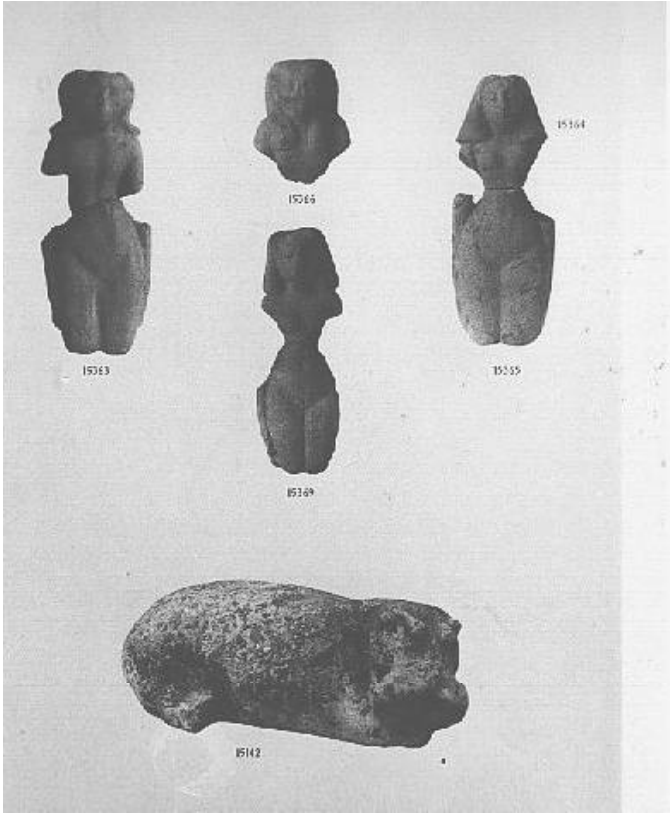
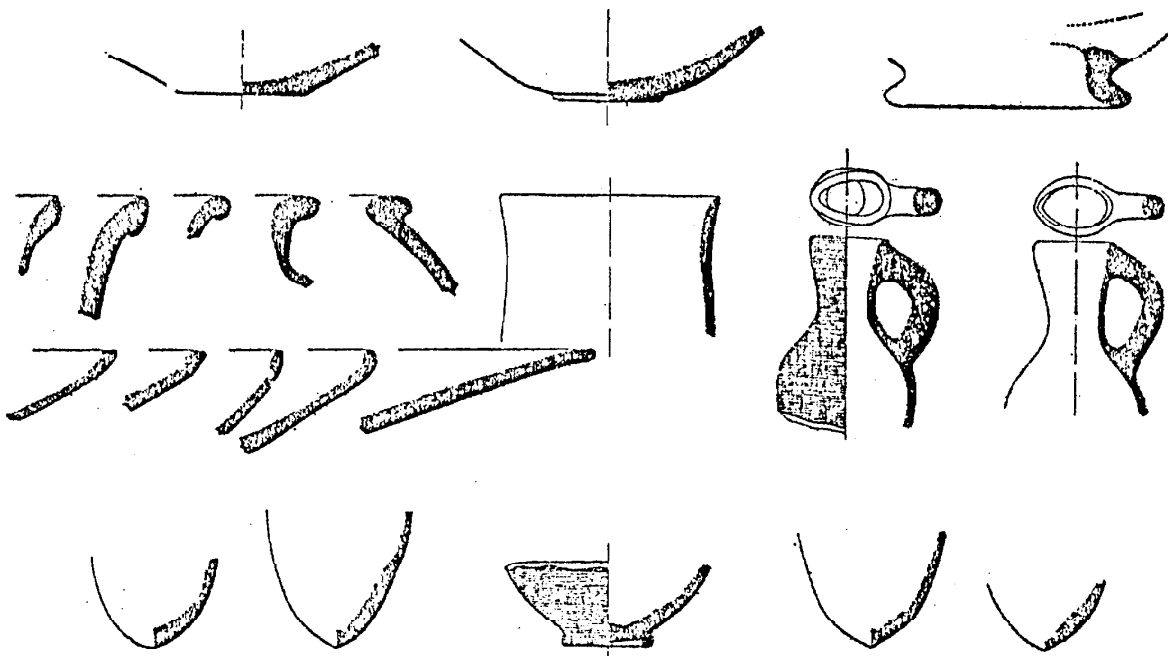


Fig. 280.--Byblos: Pottery from the Deposit that Contained Faience
Dunand, Fouilles de Byblos II, Part 2, Fig. 880.



15473 c

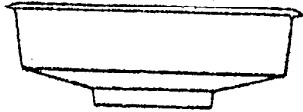
Fig. 281.--Byblos: A Golden Cylinder-Amulet, Metal Vessels and
Torques

Dunand.

- a. Fouilles de Byblos I, Fig. 146
- b. Fouilles de Byblos II, Fig. 968
- c. Ibid., Fig. 929
- d. Ibid.
- e. Part 1, Fig. 186
- f. Ibid.
- g. Ibid.

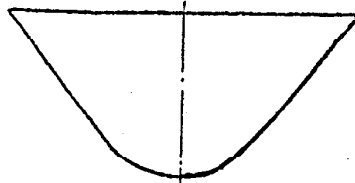


a



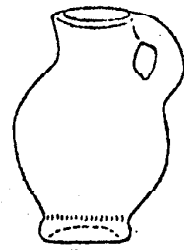
16741

b



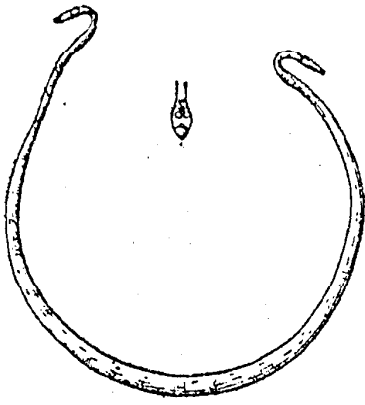
16957

c



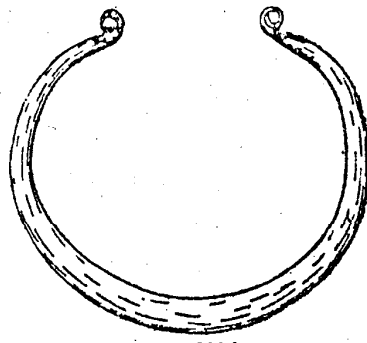
15964

d



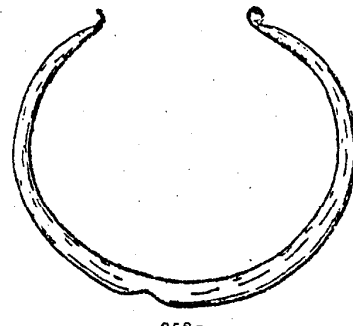
8588

e



8586

f



8587

g

Fig. 282.--Byblos: The Relief of Yantin

Dunand, Fouilles de Byblos I.

a. Fig. 183

b. Transcription Page 198

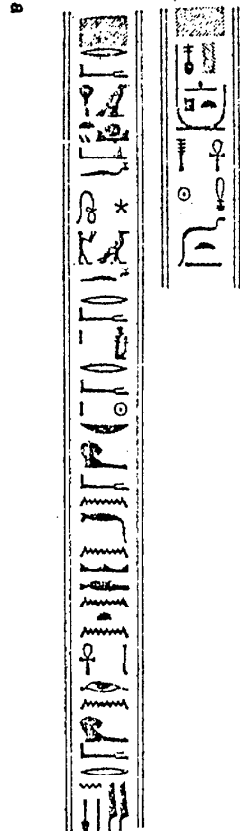
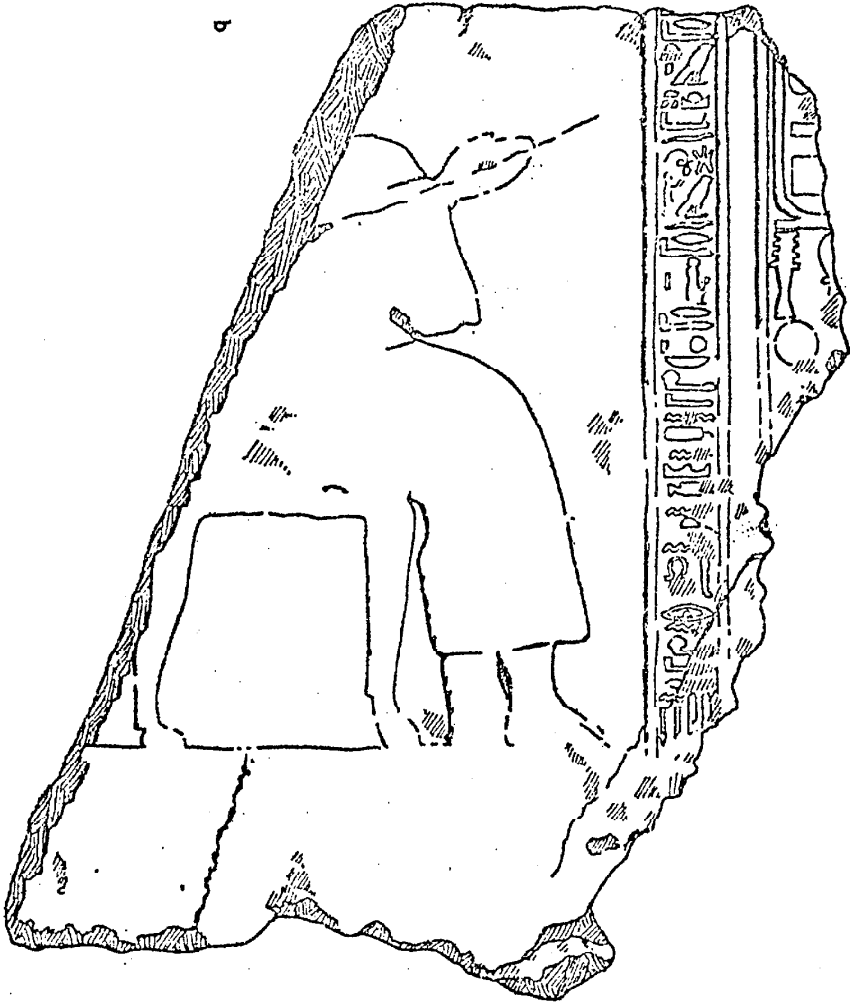


Fig. 283.--Byblos: Pottery from the Private Tombs of MB II B I-III

Montet, Byblos et l'Egypte.

a. Plate XCLV

b. Plate XCLVI

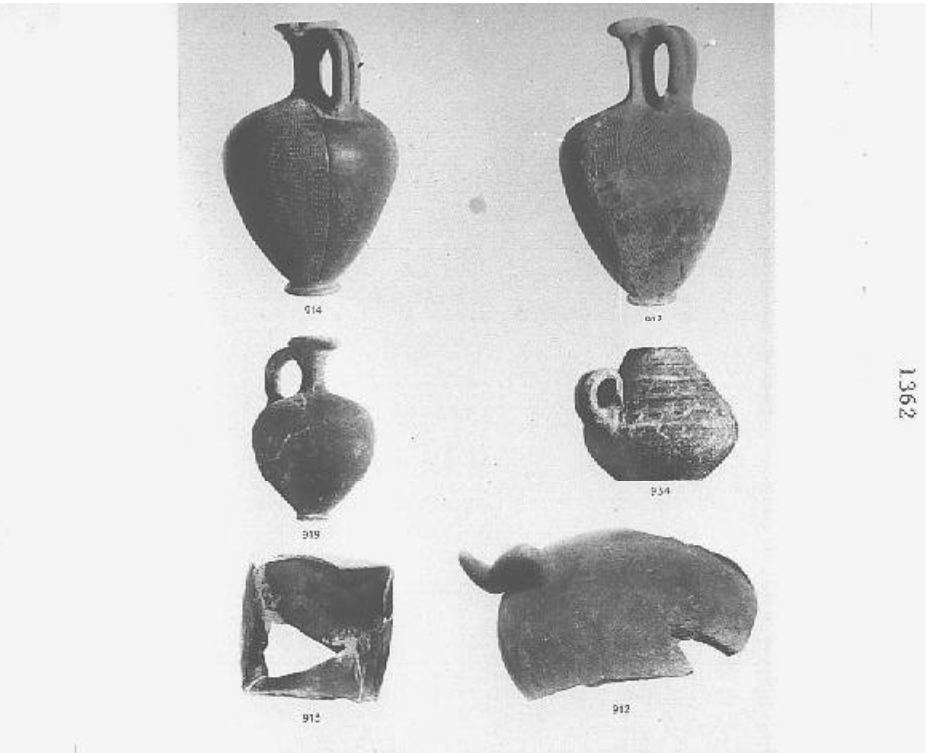


Fig. 284.--Byblos: Pottery from the Private Tombs of MB II B I-III
(Cont.)

Montet, Byblos et l'Egypte.

a. Plate CXLVII

b. Plate CXLVIII

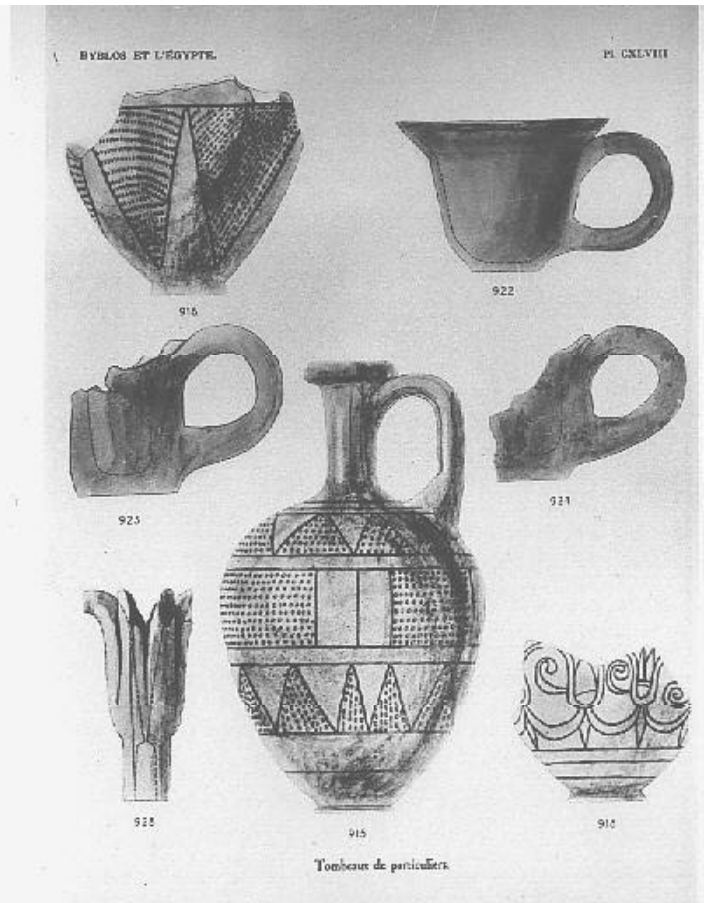
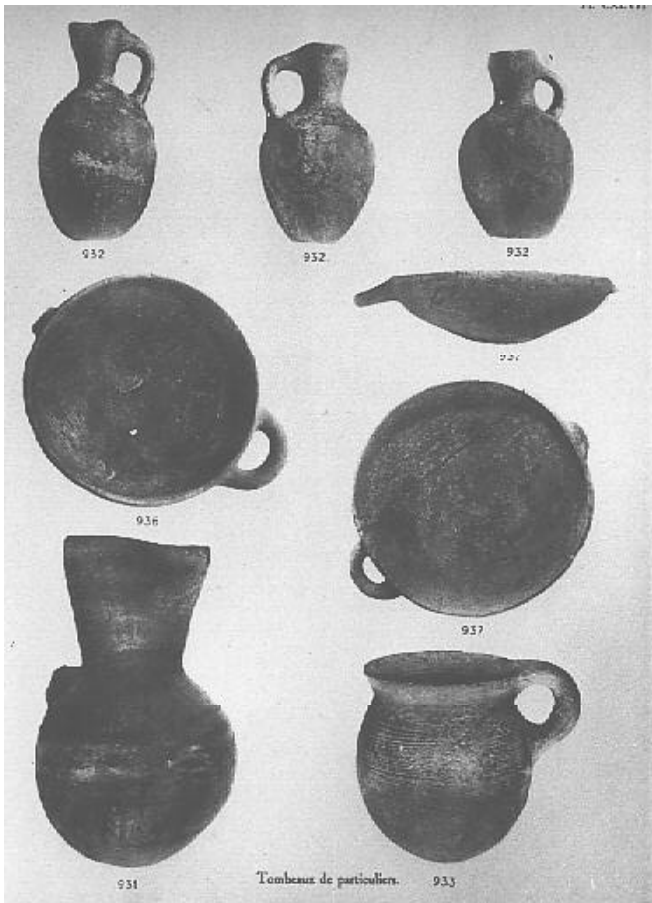


Fig. 286.--Sidon: Pottery from Ruweise Tomb 8

Guiges, "Lebe'a, Kafer-Garra, Qraye: Necropoles de la region sidonienne", Fig. 23

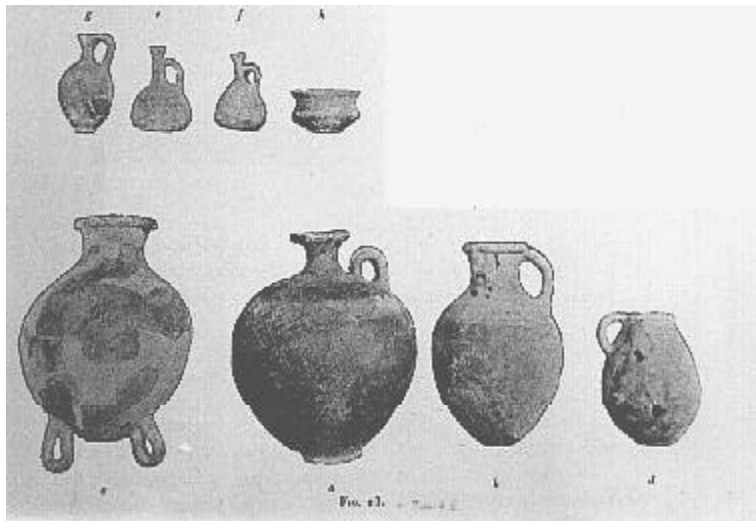


Fig. 287.--Sidon: Pottery from Ruweise Tomb 14

Guiges, "Lebe'a, Kafer-Garra, Qraye: Necropoles de la region sidonienne".

a. Fig. 29

b. Fig. 28



a

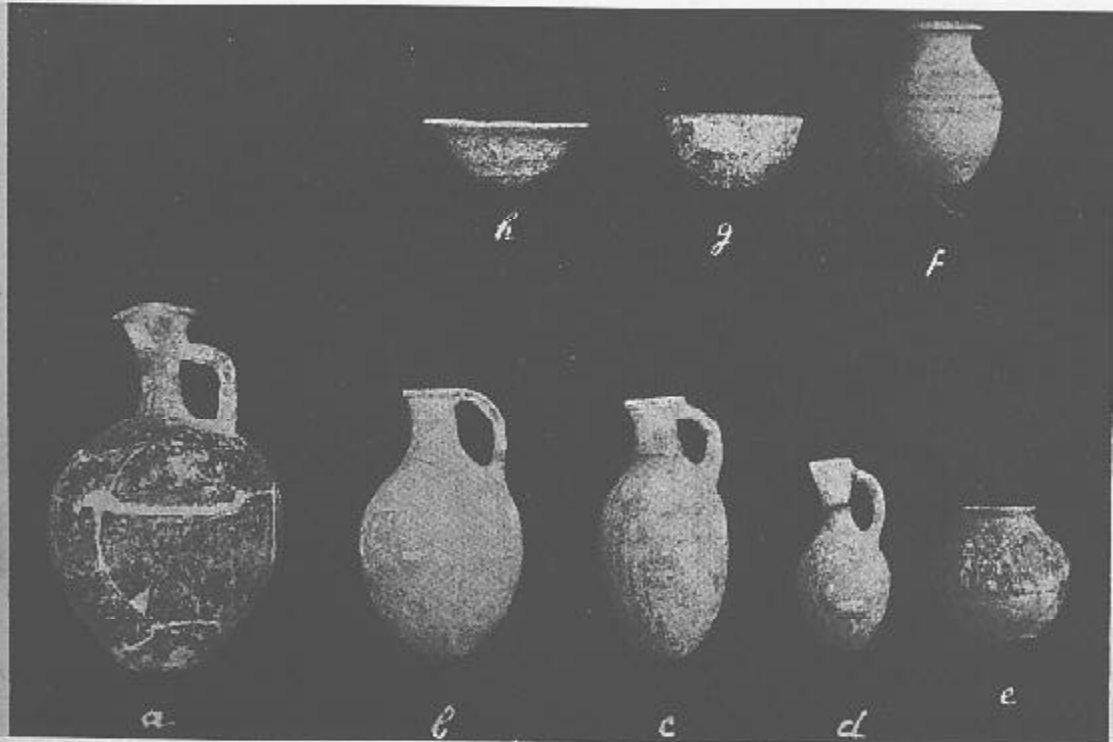


Fig. 288.--Sidon: Pottery from Ruweise Tomb 25

Guiges, "Lebe'a, Kafer-Garra, Qraye: Necropoles de la region sidonienne", Fig. 37.

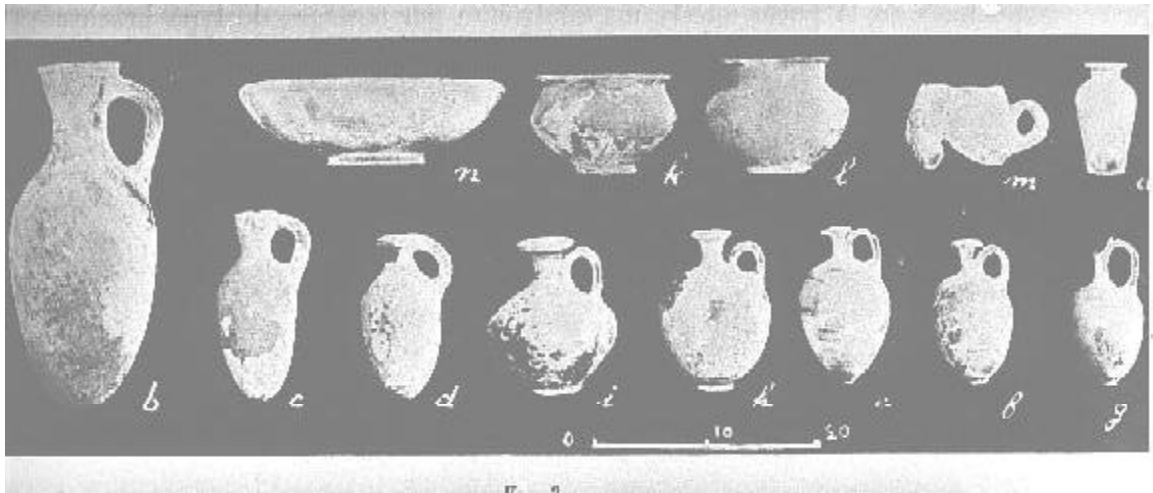


Fig. 9

Fig. 289.--Sidon: Pottery from Ruweise Tomb 57

Guiges, "Lebe'a, Kafer-Garra, Qraye: Necropoles de la region sidonienne (suite)".

a. Fig. 48

b. Fig. 49

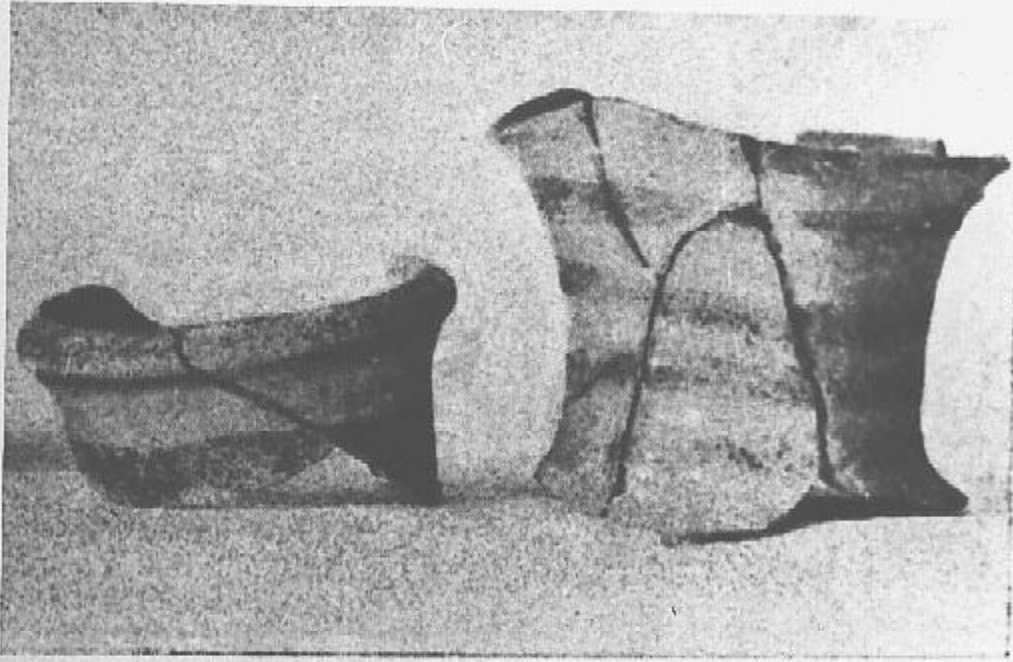


FIG. 48.



Fig. 290.--Sidon: Weapons from Tomb 57

Guiges, "Lebe'a, Kafer-Garra, Qraye: Necropoles de la region sidonienne (suite)".

a. Fig. 52

b. Fig. 51

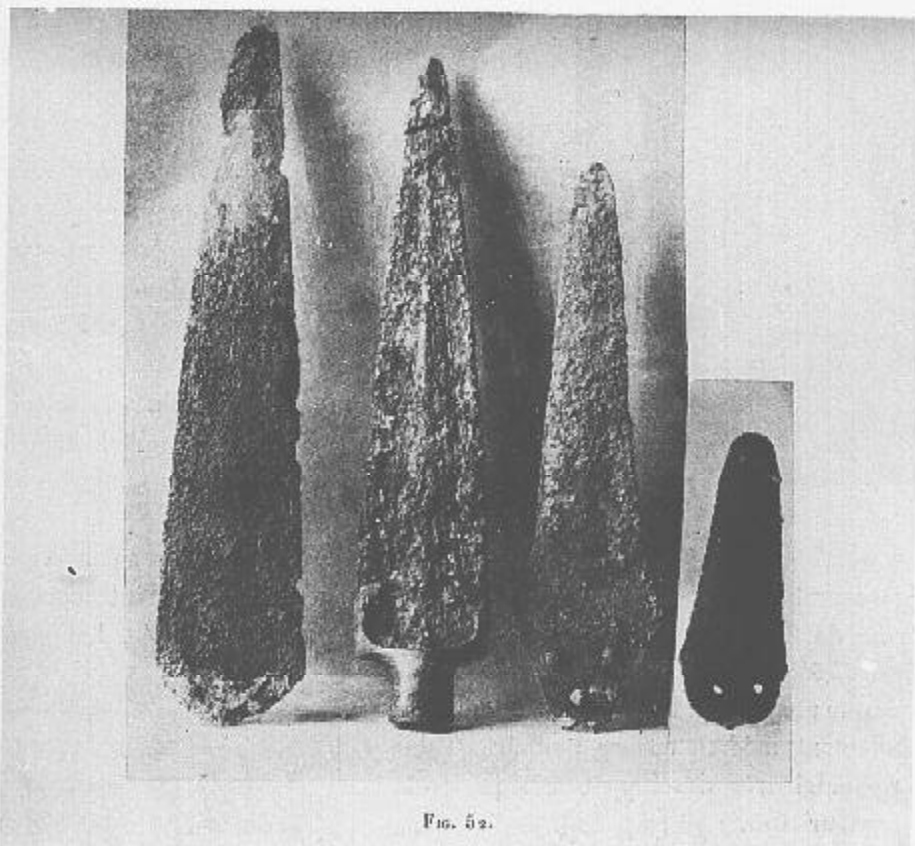


Fig. 52.

a

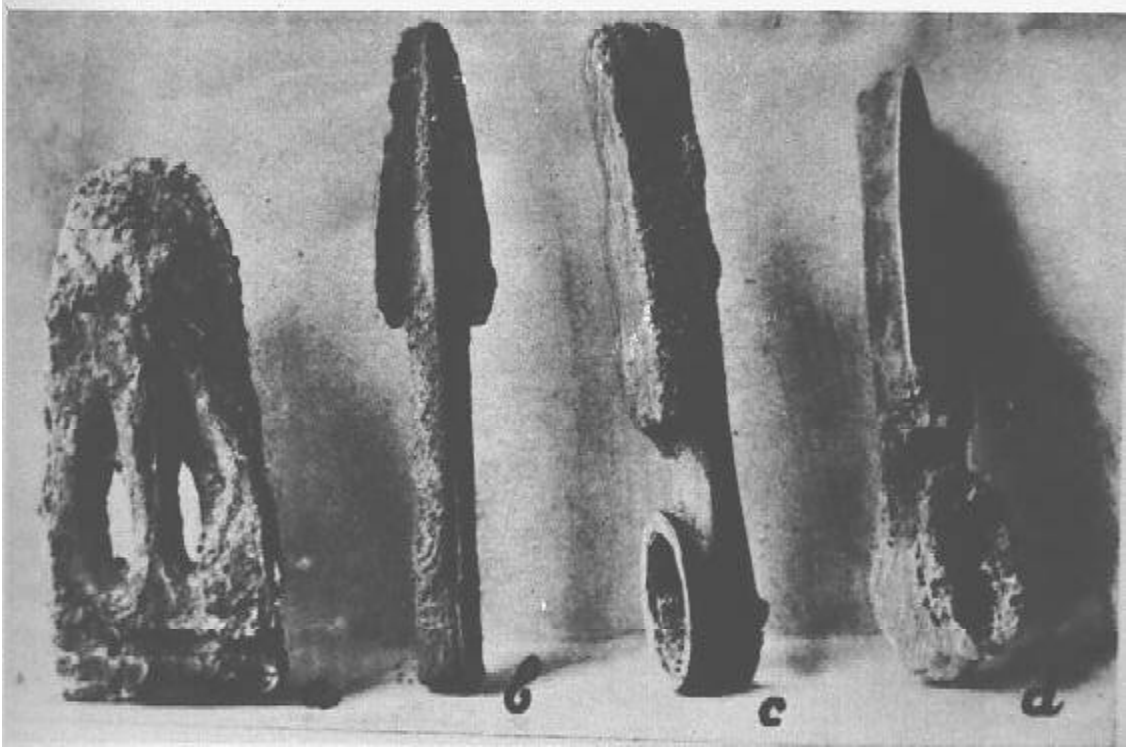


Fig. 291.--Sidon: Pottery from Ruweise Tomb 62

Guiges, "Lebe'a, Kafer-Garra, Qraye: Necropoles de la region sidonienne (suite)", Fig. 57.



Fig. 292.--Sidon: Pottery from Ruweise Tomb 66

Guiges, "Lebe'a, Kafer-Garra, Qraye: Necropoles de la region sidonienne (suite)".

a. Fig. 59

b. Fig. 60

c. Fig. 69

d. Fig. 67

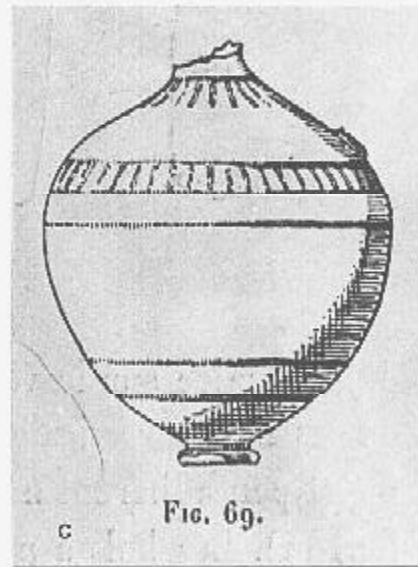
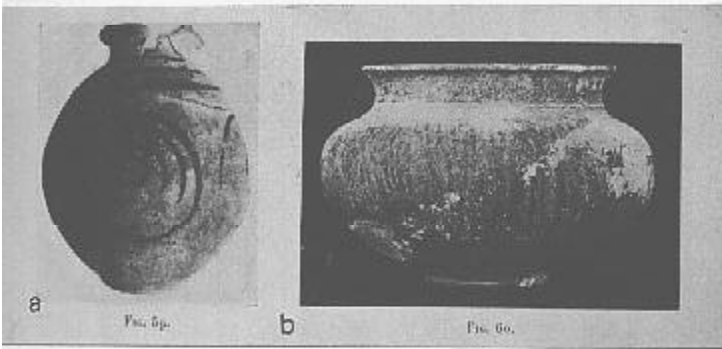


Fig. 293.--Sidon: Pottery from Ruweise Tomb 66 (Cont.)

Guiges, "Lebe'a, Kafer-Garra, Qraye: Necropoles de la region sidonienne (suite)".

- a. Plate IV
- b. Plate III



a



Fig. 294.--Sidon: Pottery from Ruweise Tomb 66 (Cont.)

Guiges, "Lebe'a, Kafer-Garra, Qraye: Necropoles de la region sidonienne (suite)".

a. Fig. 58

b. Fig. 68

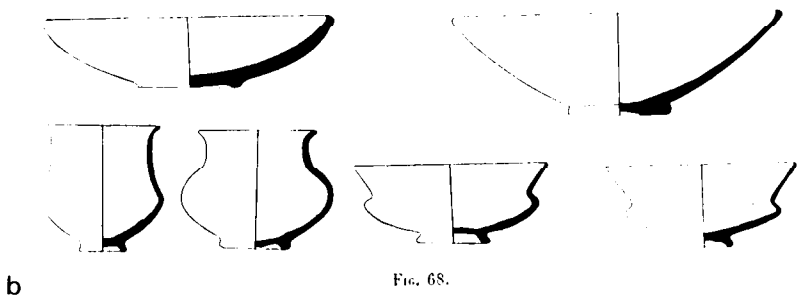
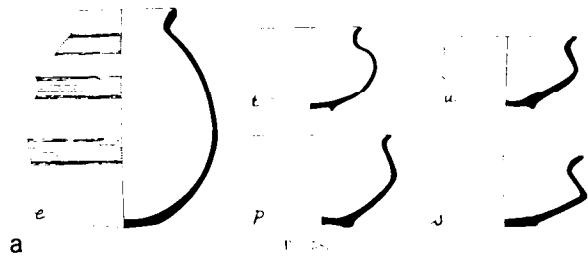


FIG. 68.

Fig. 295.--Sidon: Jar from Ruweise Tomb 43

Guiges, "Lebe'a, Kafer-Garra, Qraye: Necropoles de la region sidonienne (suite)", Fig. 43.



FIG. 43.

Fig. 296.--Amrith: Pottery from Tomb Y (The Captions are Reversed)

Dunand, Vessih Saliby and Khirichian, Agop, "Les Fouilles d'Amrith en 1954; Rapport Preliminaire", Plate III, Fig. 4.



4. — Mobilier funéraire de la tombe-silo (7).

Fig. 297.--Amrith: Pottery from Tomb 7

Dunand, Vessih Saliby and Khirichian, Agop, "Les Fouilles d'Amrith en 1954; Rapport Preliminaire", Plate III, Fig. 2.



2. — Mobilier funéraire de la tombe-silo (4).