

THE UNIVERSITY OF CHICAGO

ARCHAEOLOGY AND HISTORICAL PROBLEMS OF THE  
SECOND INTERMEDIATE PERIOD

VOLUME V

(Cont.)

A DISSERTATION SUBMITTED TO  
THE FACULTY OF THE DIVISION OF THE HUMANITIES  
IN CANDIDACY FOR THE DEGREE OF  
DOCTOR OF PHILOSOPHY

DEPARTMENT OF NEAR EASTERN LANGUAGES  
AND CIVILIZATIONS

BY

BRUCE WILLIAMS

CHICAGO, ILLINOIS

DECEMBER 1975

Fig. 298.--Megiddo: Pottery of the MB II B 1; Group A

Loud, Megiddo II

- a. Plate 14, No. 10
- b. Plate 14, No. 3
- c. Plate 14, No. 17
- d. Plate 14, No. 11
- e. Plate 14, No. 9
- f. Plate 9, No. 5
- g. Plate 14, No. 24
- h. Plate 9, No. 7
- i. Plate 18, No. 36
- j. Plate 14, No. 19
- k. Plate 14, No. 37
- l. Plate 14, No. 39
- m. Plate 14, No. 31
- n. Plate 13, No. 8
- o. Plate 10, No. 17
- p. Plate 19, No. 33
- q. Plate 11, No. 3
- r. Plate 12, No. 1
- s. Plate 12, No. 8
- t. Plate 12, No. 3
- u. Plate 12, No. 6

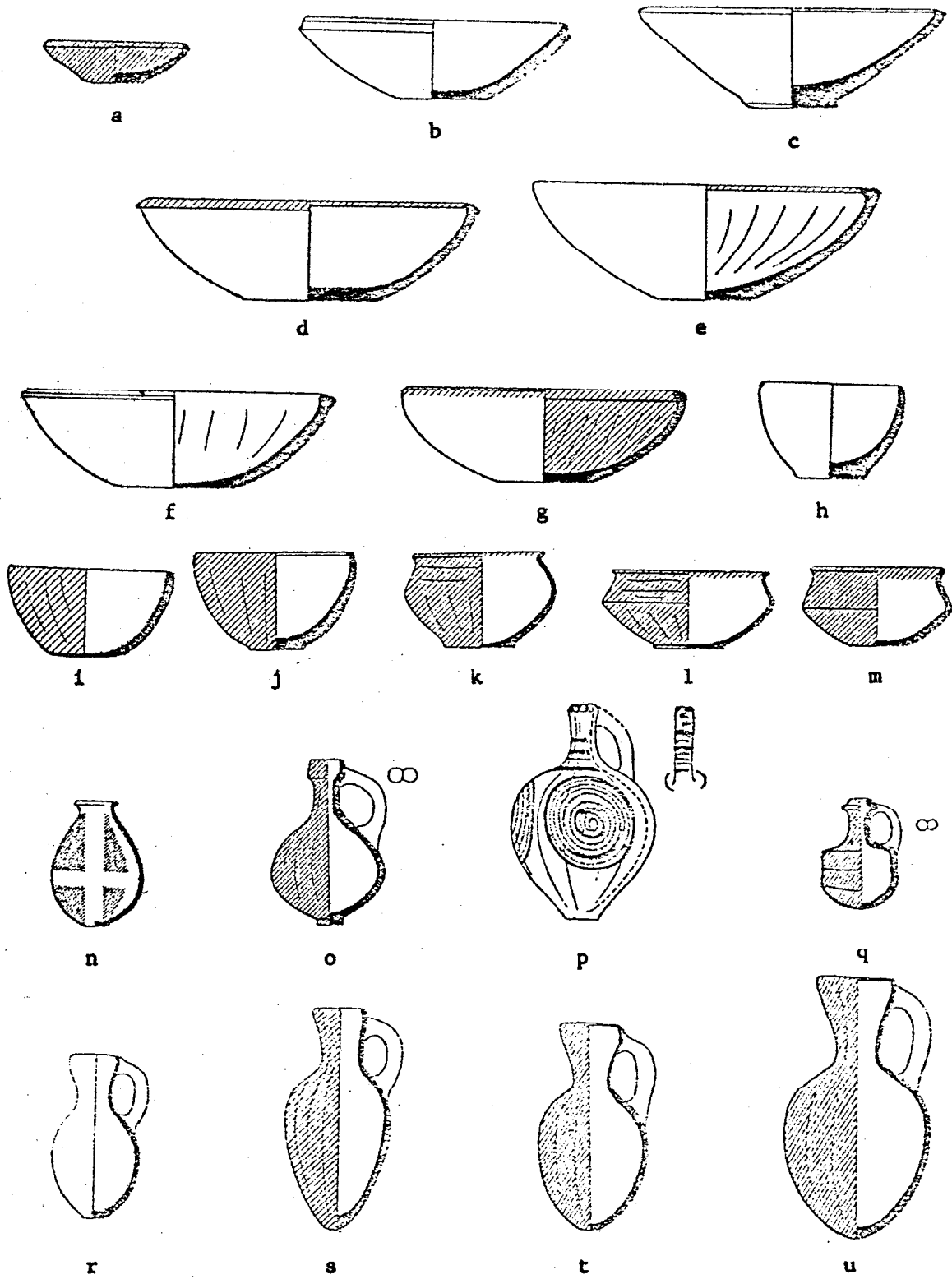


Fig. 299.--Megiddo: Pottery of the MB II B 1; Group A (Cont.)

Loud, Megiddo II.

- a. Plate 11, No. 21
- b. Plate 11, No. 16
- c. Plate 11, No. 15
- d. Plate 11, No. 17
- e. Plate 11, No. 20
- f. Plate 13, No. 11
- g. Plate 14, No. 24
- h. Plate 10, No. 12
- i. Plate 14, No. 36

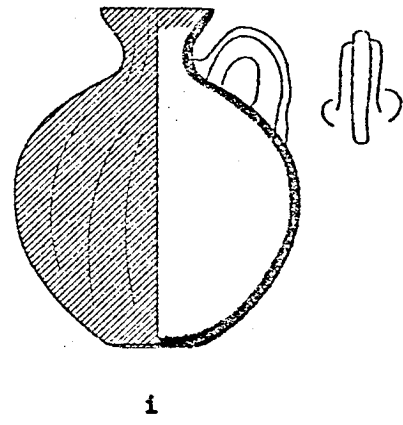
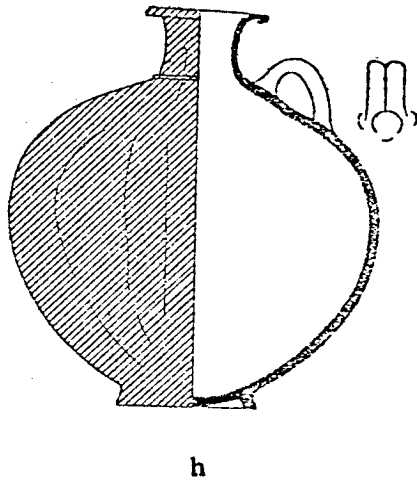
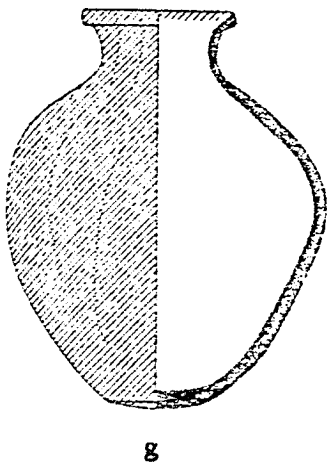
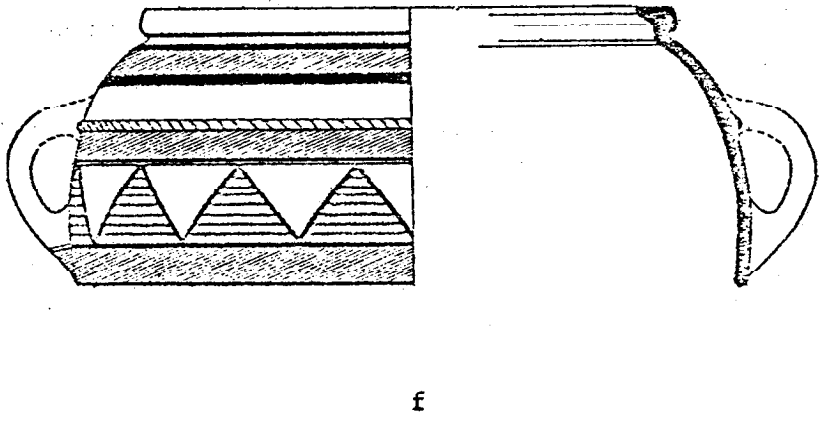
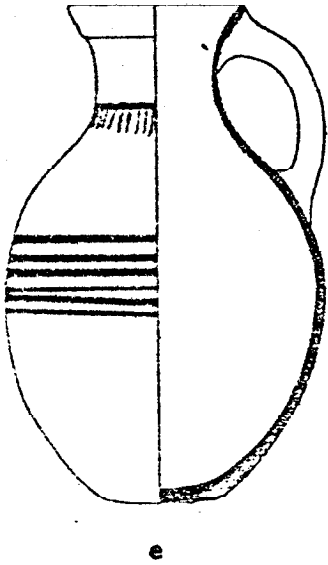
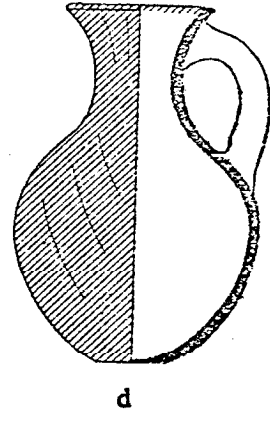
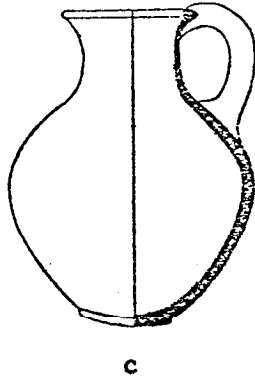
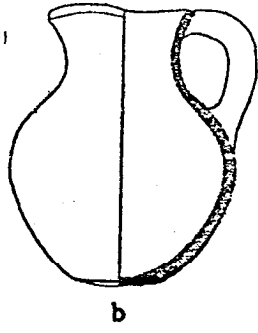
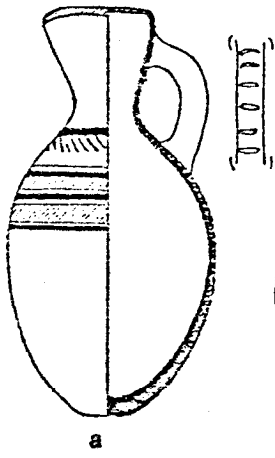
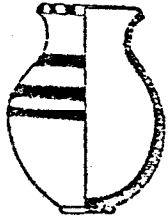


Fig. 300.--Megiddo: Pottery of the MB II B 1; Group A (Cont.)

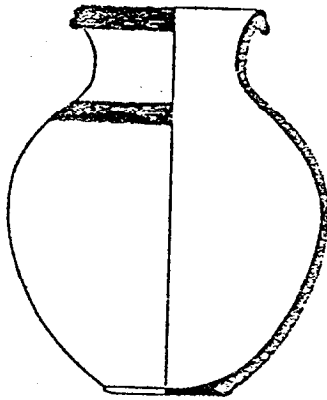
Loud, Megiddo II.

- a. Plate 8, No. 8
- b. Plate 8, No. 9
- c. Plate 13, No. 4
- d. Plate 13, No. 5 Early sherds from near locus T. 5147
- e. Plate 12, No. 22
- f. Plate 12, No. 20
- g. Plate 12, No. 16

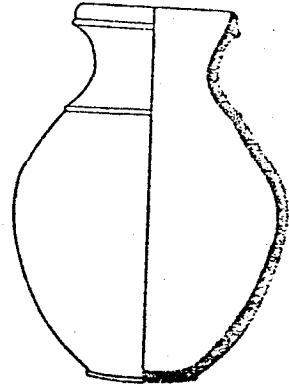
1396



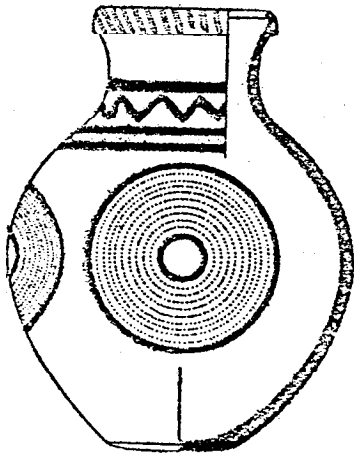
a



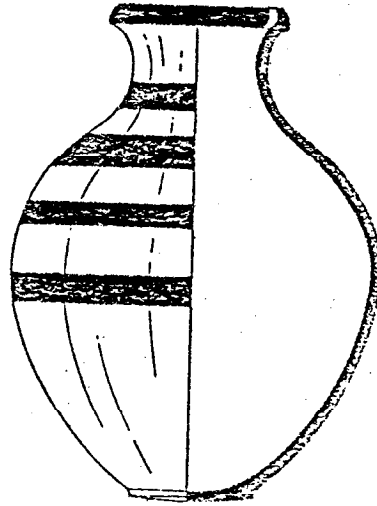
b



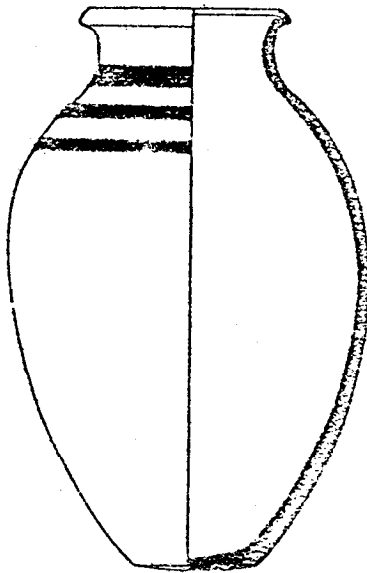
c



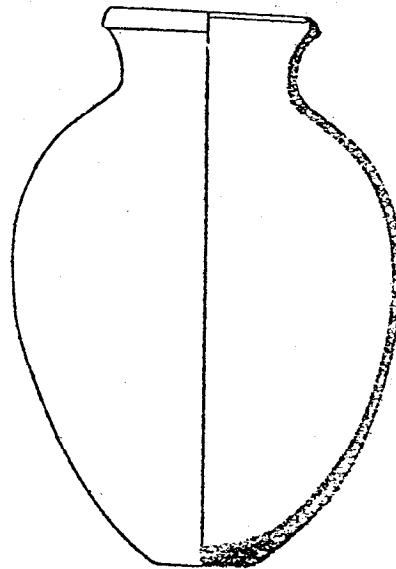
d



e



f



g

Fig. 301.--Megiddo: Pottery of the MB II B 2: Platters and  
Bowls from Tomb 911 A1

Guy and Engberg, Megiddo Tombs, Plate 28.

- a. No. 1
- b. No. 2
- c. No. 3
- d. No. 4
- e. No. 5
- f. No. 6
- g. No. 7
- h. No. 8
- i. No. 9
- j. No. 10
- k. No. 11
- l. No. 12
- m. No. 13
- n. No. 14
- o. No. 15
- p. No. 16
- q. No. 17
- r. No. 18
- s. No. 19
- t. No. 20
- u. No. 21
- v. No. 22
- w. No. 23
- x. No. 24
- y. No. 25
- z. No. 26
- aa. No. 27
- bb. No. 28
- cc. No. 29
- dd. No. 30
- ee. No. 31
- ff. No. 32
- gg. No. 33



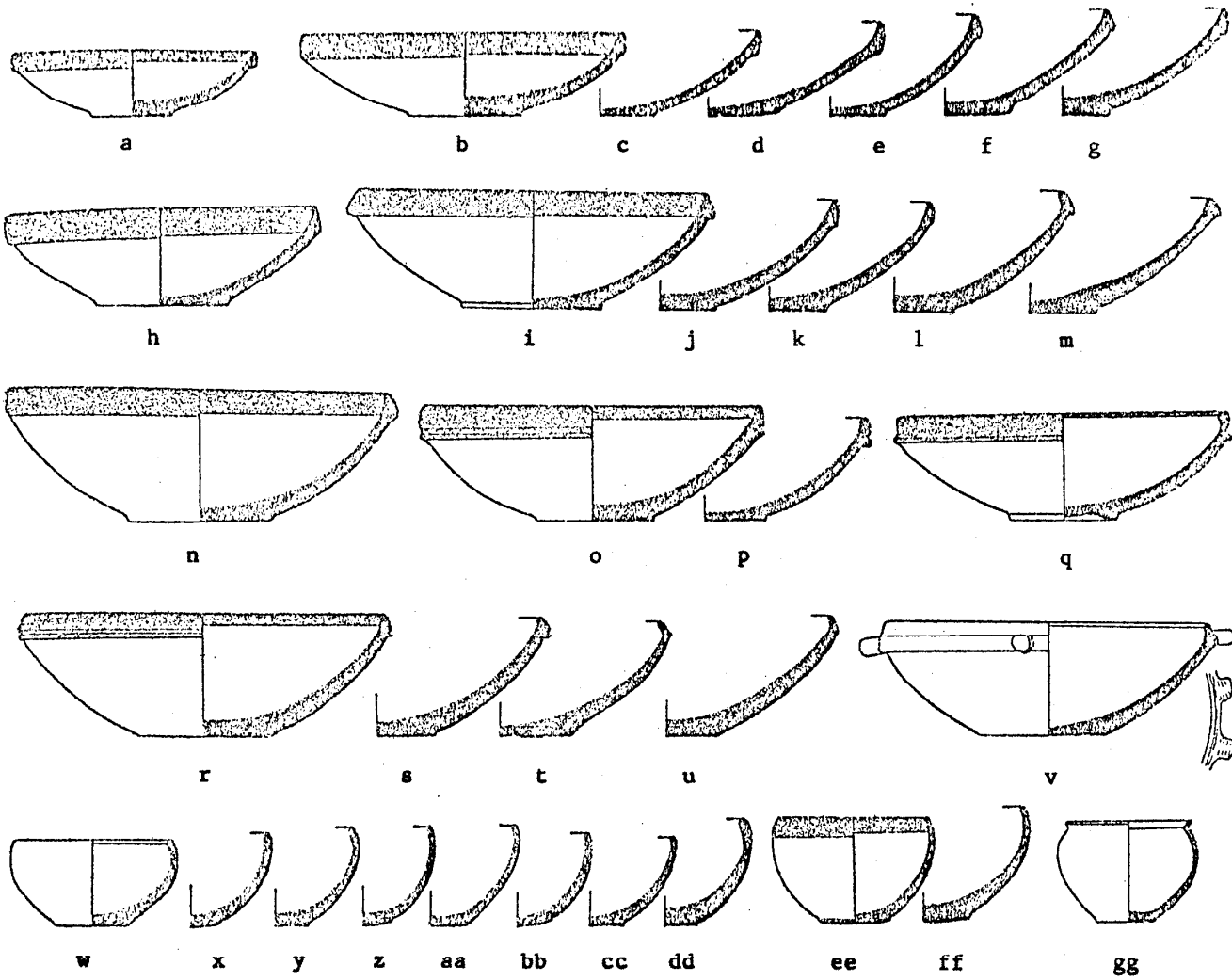


Fig. 302.--Megiddo: Pottery of the MB II B 2: Platters and  
Bowls from Tomb 911 A1 (Cont.)

Guy and Engberg, Megiddo Tombs, Plate 28.

a. No. 34

b. No. 35

c. No. 36

d. No. 37

e. No. 38

f. No. 39

g. No. 40

h. No. 41

i. No. 42

j. No. 43

k. No. 44

l. No. 45

m. No. 46

n. No. 47

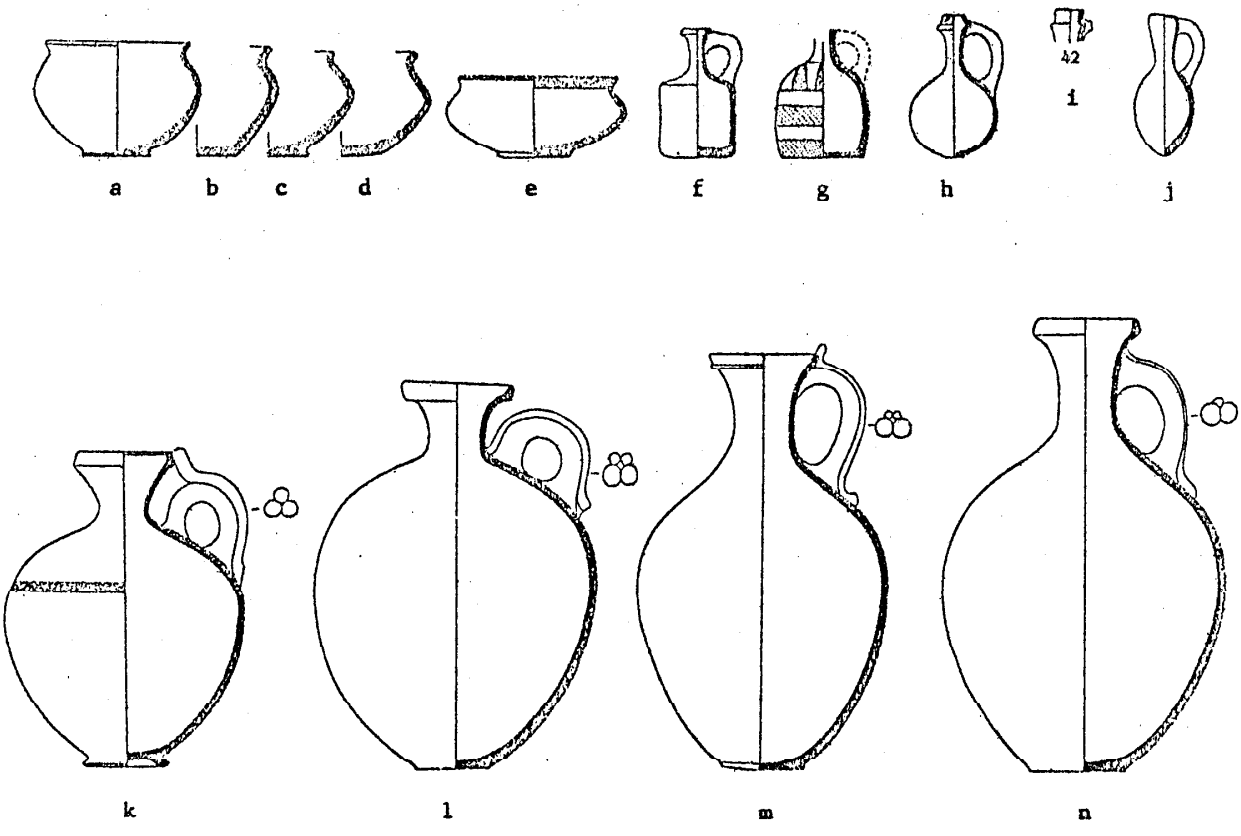
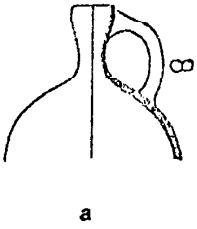


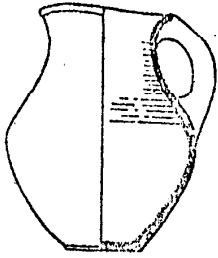
Fig. 303.--Megiddo: Pottery of the MB II B 2: Platters and  
Bowls from Tomb 911 A1 (Cont.)

Guy and Engberg, Megiddo Tombs, Plate 29.

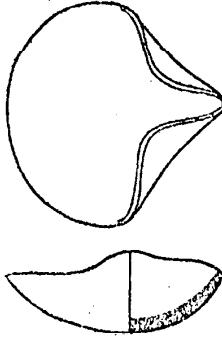
- a. No. 6
- b. No. 7
- c. No. 8 (Probably later than the MB II deposit)
- d. No. 9
- e. No. 1
- f. No. 2
- g. No. 3
- h. No. 4
- i. No. 5



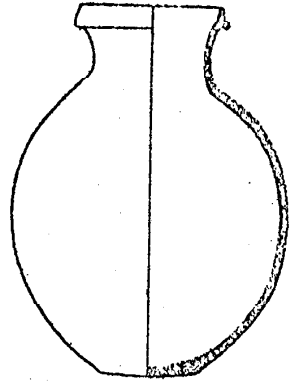
a



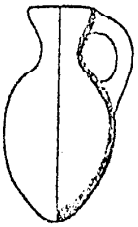
b



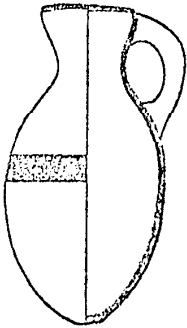
c



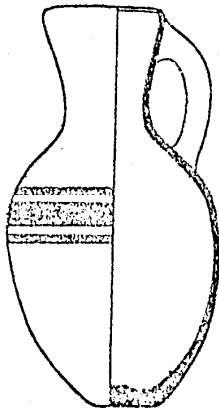
d



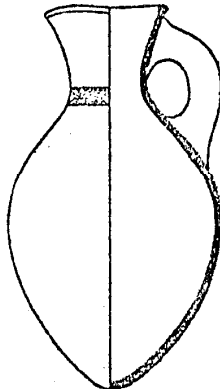
e



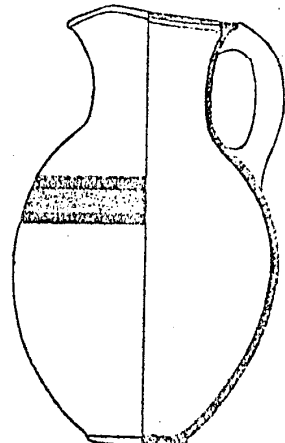
f



g



h



i

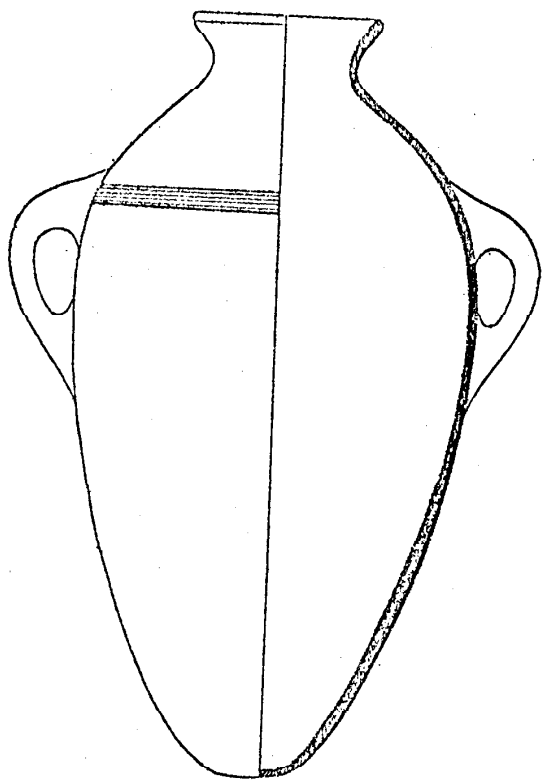
Fig. 304.--Megiddo: Pottery of the MB II B 2: Platters and  
Bowls from Tomb 911 A1 (Cont.)

Guy and Engberg, Megiddo Tombs, Plate 29

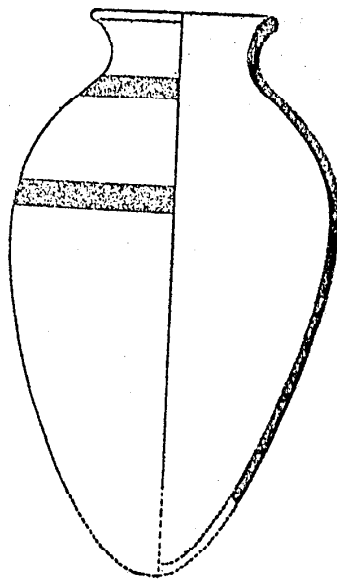
a. No. 10

b. No. 11

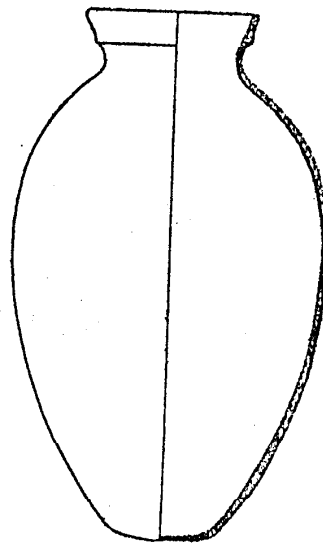
c. No. 12



a



b



c

Fig. 305. Megiddo: Pottery of the MB II B 2; Tombs 911 C and  
911 D

Guy and Engberg, Megiddo Tombs, Plate 31.

Tomb 911 C:

- a. No. 5
- b. No. 6
- c. No. 7

Tomb 911 D:

- d. No. 8
- e. No. 9
- f. No. 10
- g. No. 11
- h. No. 12
- i. No. 13
- j. No. 14
- k. No. 15
- l. No. 16
- m. No. 17



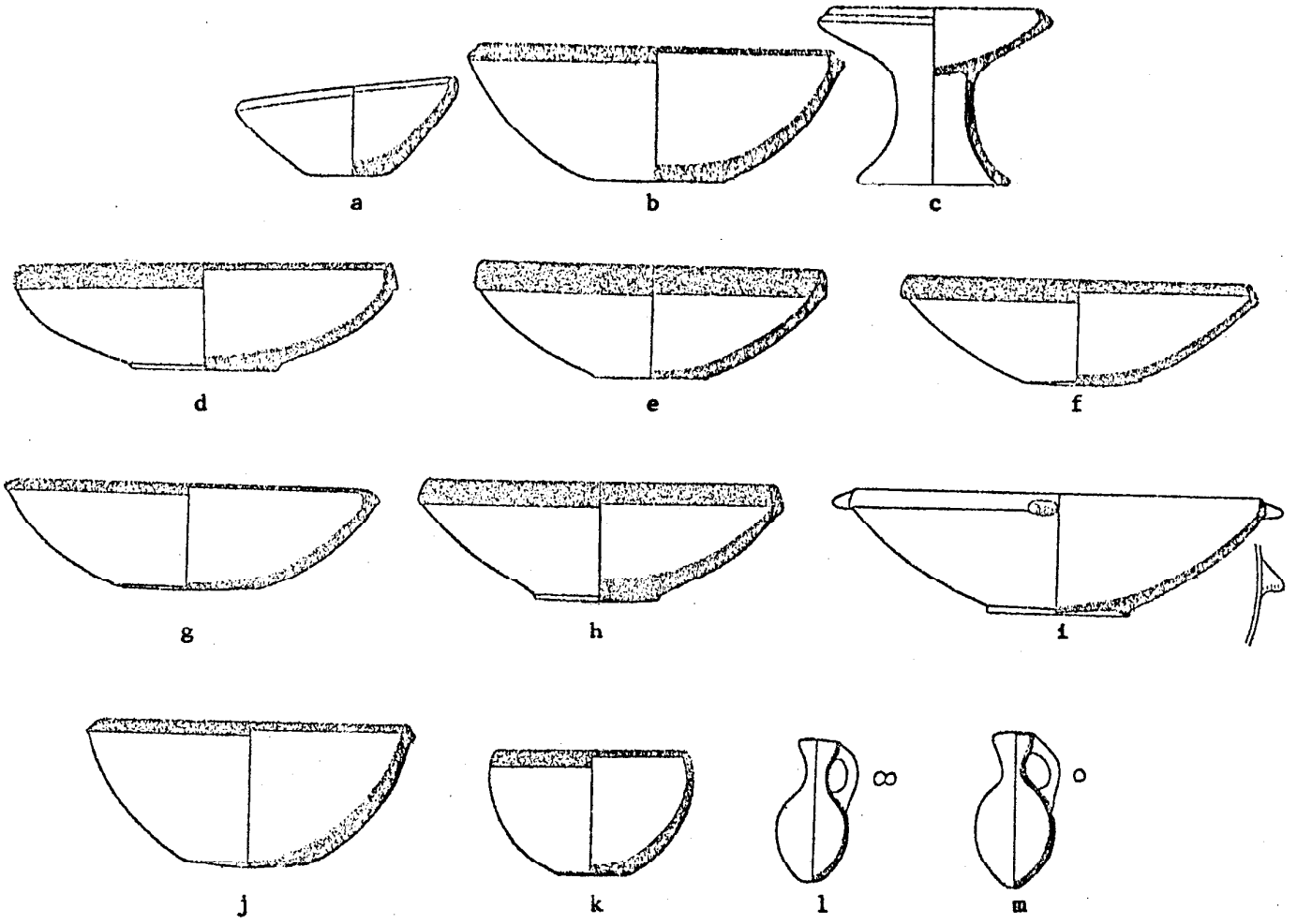


Fig. 306.--Megiddo: Pottery of the MB II B 2; Tomb 911 D (Cont.)

Guy and Engberg, Megiddo Tombs.

Plate 31:

a. 18

b. 19

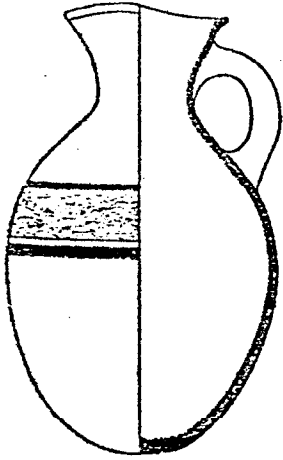
c. 20

d. 21

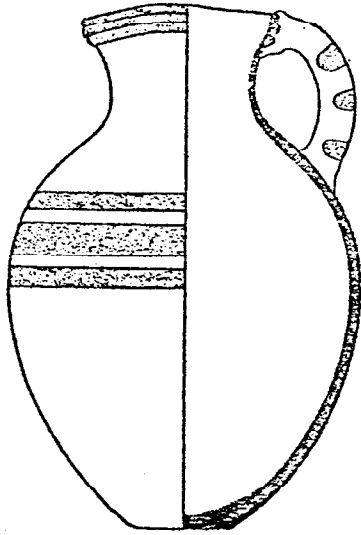
Plate 32:

e. 1

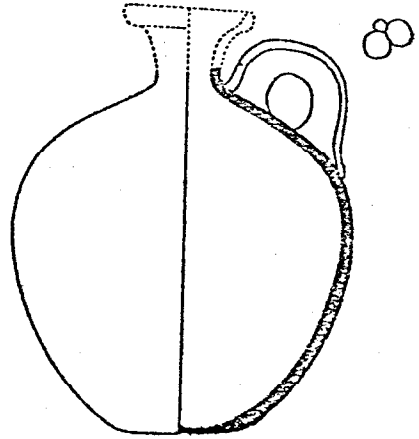
f. 2



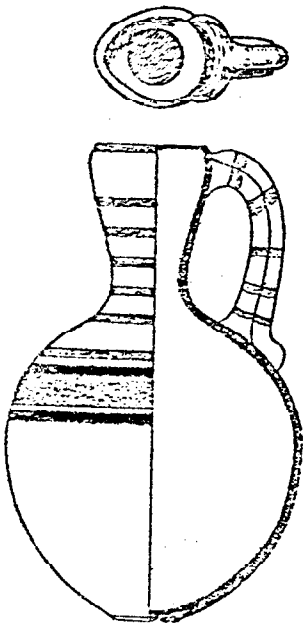
a



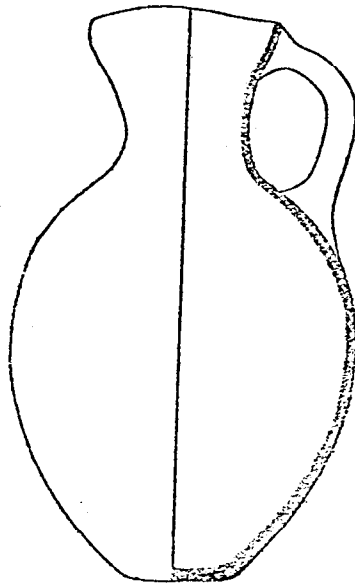
b



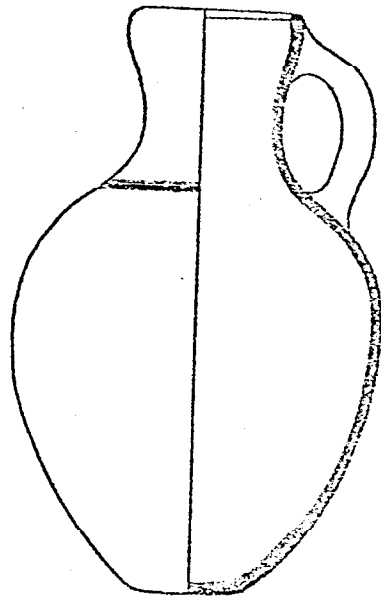
c



d



e



f

Fig. 307.--Megiddo: Pottery of the MB II B 2; Tomb 912 B

Guy and Engberg, Megiddo Tombs, Plate 35.

a. No. 1

b. No. 2

c. No. 3

d. No. 4

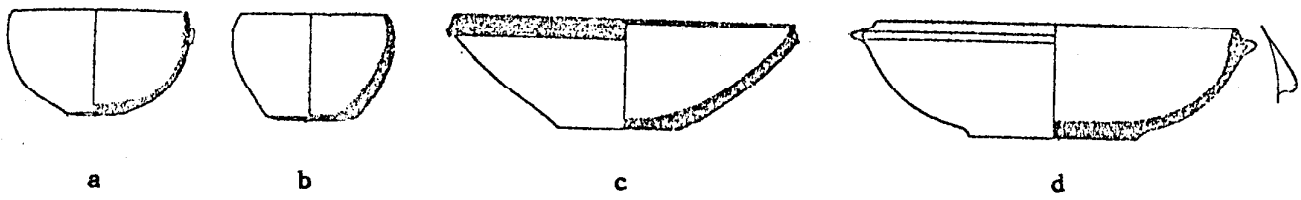
e. No. 5

f. No. 6

g. No. 7

h. No. 8

i. No. 10

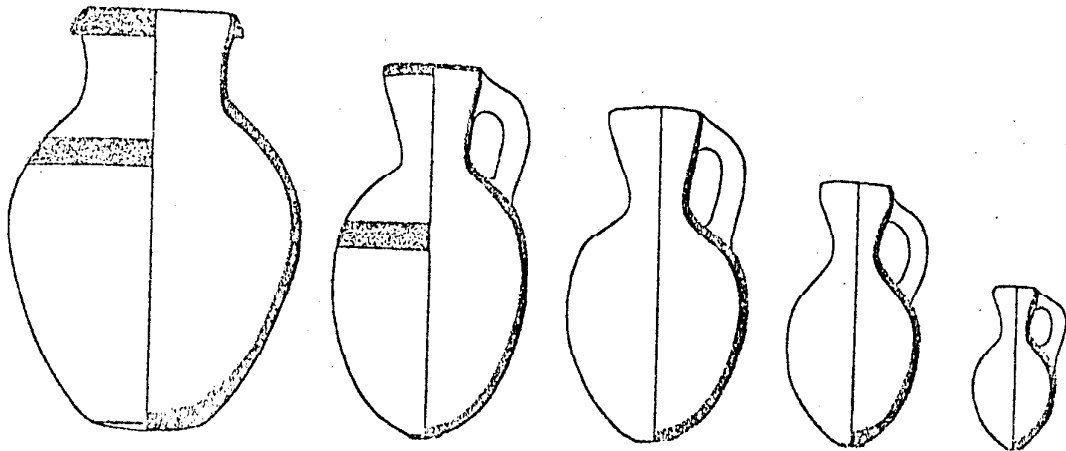


a

b

c

d



e

f

g

h

i

Fig. 308.--Megiddo: Pottery of the MB II B 2; Tomb 912 D

Guy and Engberg, Megiddo Tombs, Plate 35.

a. No. 11

b. No. 12

c. No. 13

d. No. 14

e. No. 15

f. No. 16

g. No. 17

h. No. 18

i. No. 19

j. No. 20

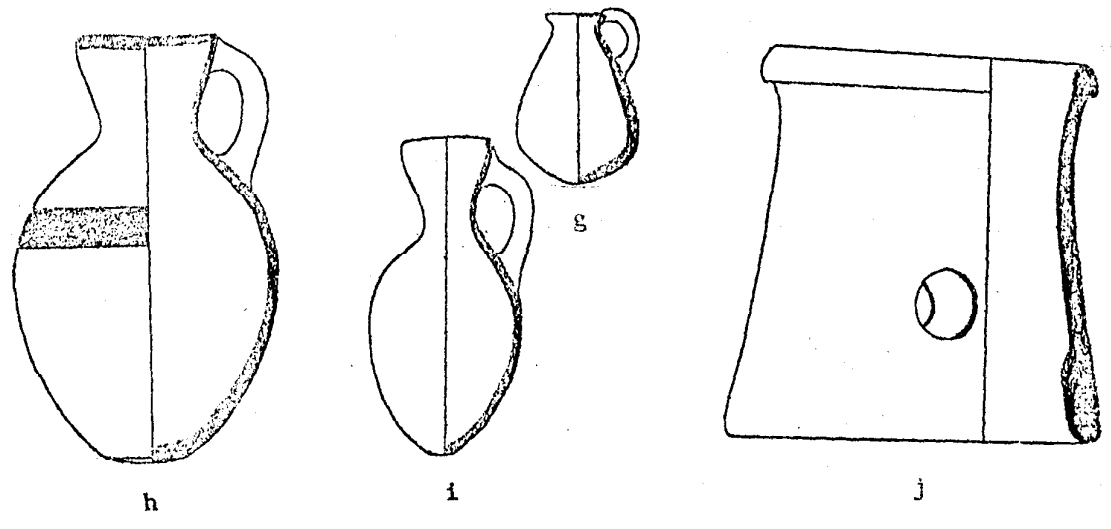
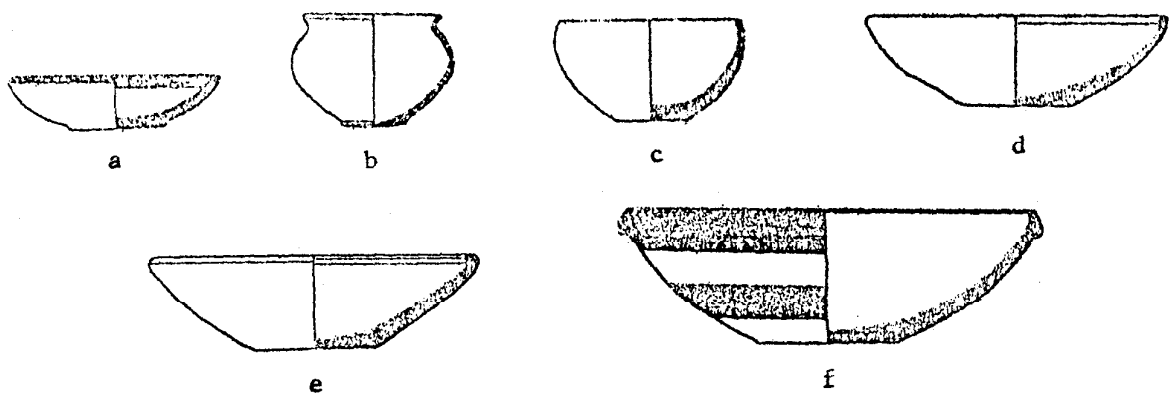


Fig. 309.--Megiddo: Weapons of the MB II B 2

Schaeffer, Stratigraphie Comparee

a. From 911 A 1      Fig. 143

b. From 911 D        Fig. 144

c. From 912          Fig. 145



1414

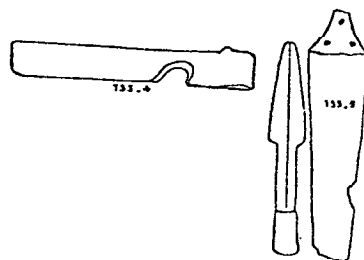
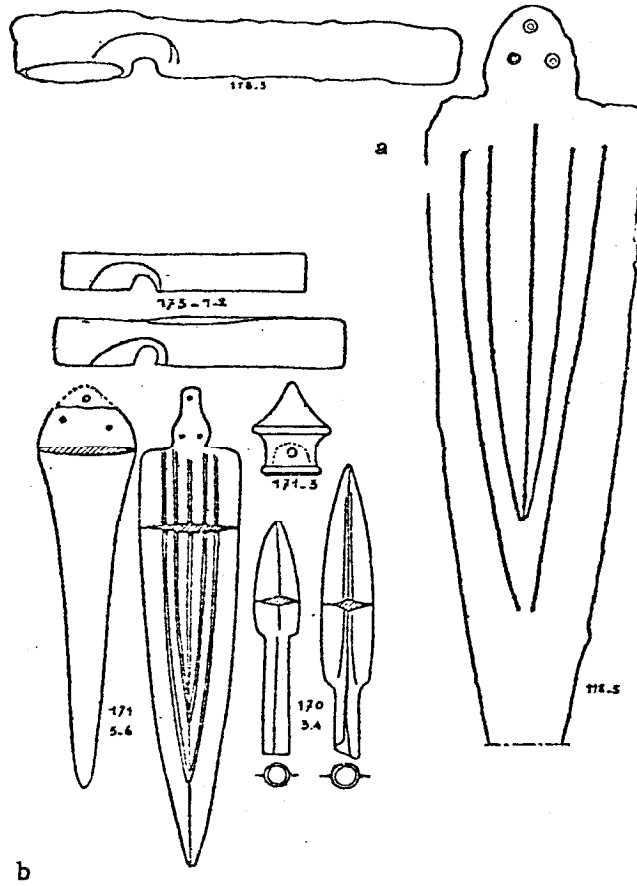
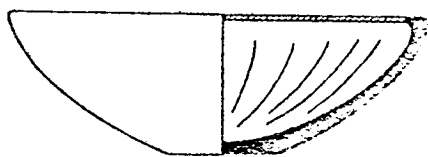


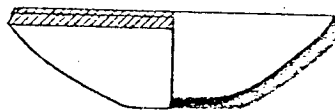
Fig. 310.--Megiddo: Pottery of the MB II B 2; Group B

Loud, Megiddo II.

- a. Plate 22, No. 2
- b. Plate 21, No. 20
- c. Plate 9, No. 6
- d. Plate 14, No. 5
- e. Plate 14, No. 6
- f. Plate 14, No. 8
- g. Plate 14, No. 20
- h. Plate 14, No. 7
- i. Plate 14, No. 15
- j. Plate 4, No. 1
- k. Plate 21, No. 17
- l. Plate 19, No. 7
- m. Plate 22, No. 5
- n. Plate 9, No. 2
- o. Plate 9, No. 3
- p. Plate 14, No. 12



a



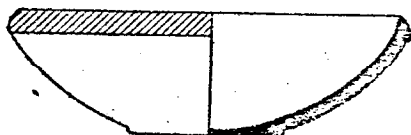
b



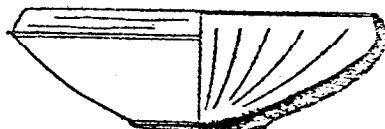
c



d



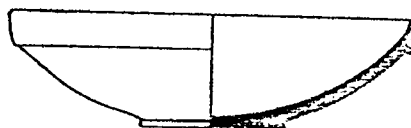
e



f



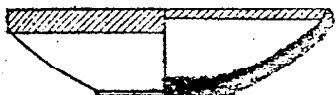
g



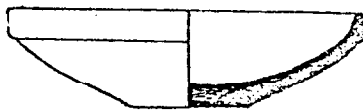
h



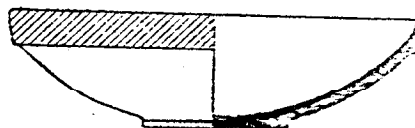
i



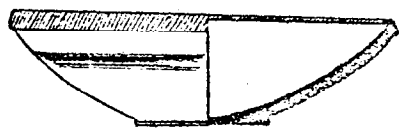
j



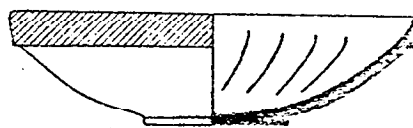
k



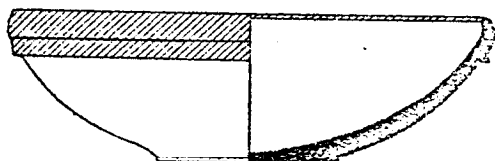
l



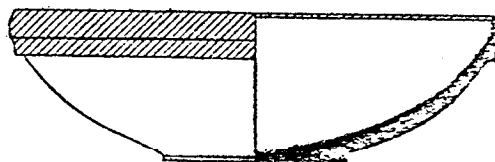
m



n



o



p

Fig. 311.--Megiddo: Pottery of the MB II B 2: Group B (Cont.)

Loud, Megiddo II.

- a. Plate 14, No. 29
- b. Plate 21, No. 7
- c. Plate 9, No. 8
- d. Plate 9, No. 9
- e. Plate 14, No. 34
- f. Plate 15, No. 12
- g. Plate 15, No. 4
- h. Plate 14, No. 27
- i. Plate 22, No. 6
- j. Plate 14, No. 28
- k. Plate 15, No. 2
- l. Plate 14, No. 38
- m. Plate 9, No. 10
- n. Plate 19, No. 4
- o. Plate 15, No. 11

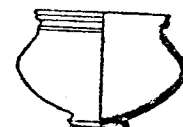
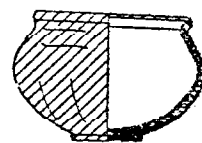
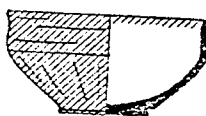
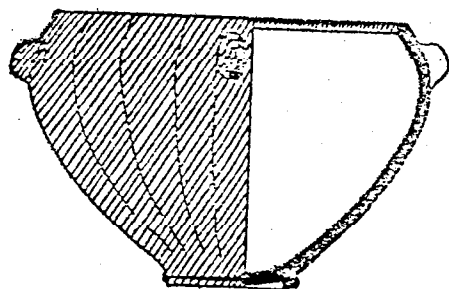
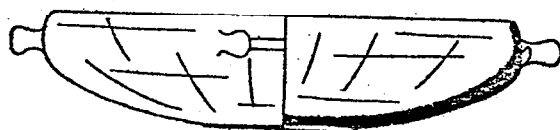
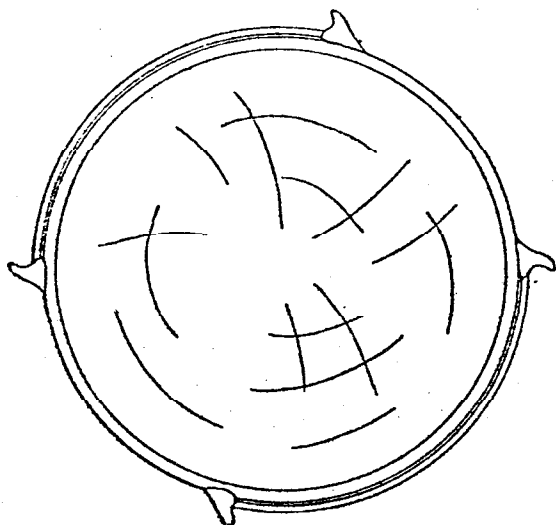
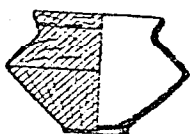
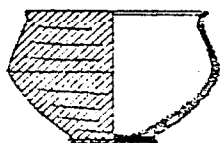
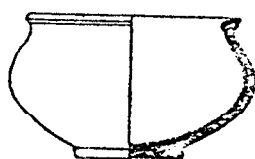
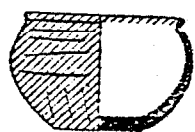
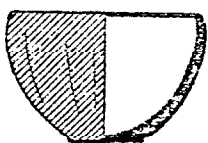
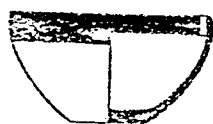


Fig. 312.--Megiddo: Pottery of the MB II B; Group B (Cont.)

Loud, Megiddo II.

- a. Plate 20, No. 18
- b. Plate 10, No. 19
- c. Plate 10, No. 18
- d. Plate 11, No. 4
- e. Plate 17, No. 8
- f. Plate 10, No. 11
- g. Plate 19, No. 23
- h. Plate 10, No. 21
- i. Plate 11, No. 5
- j. Plate 10, No. 10
- k. Plate 10, No. 1
- l. Plate 10, No. 16
- m. Plate 10, No. 6
- n. Plate 7, No. 14
- o. Plate 10, No. 7

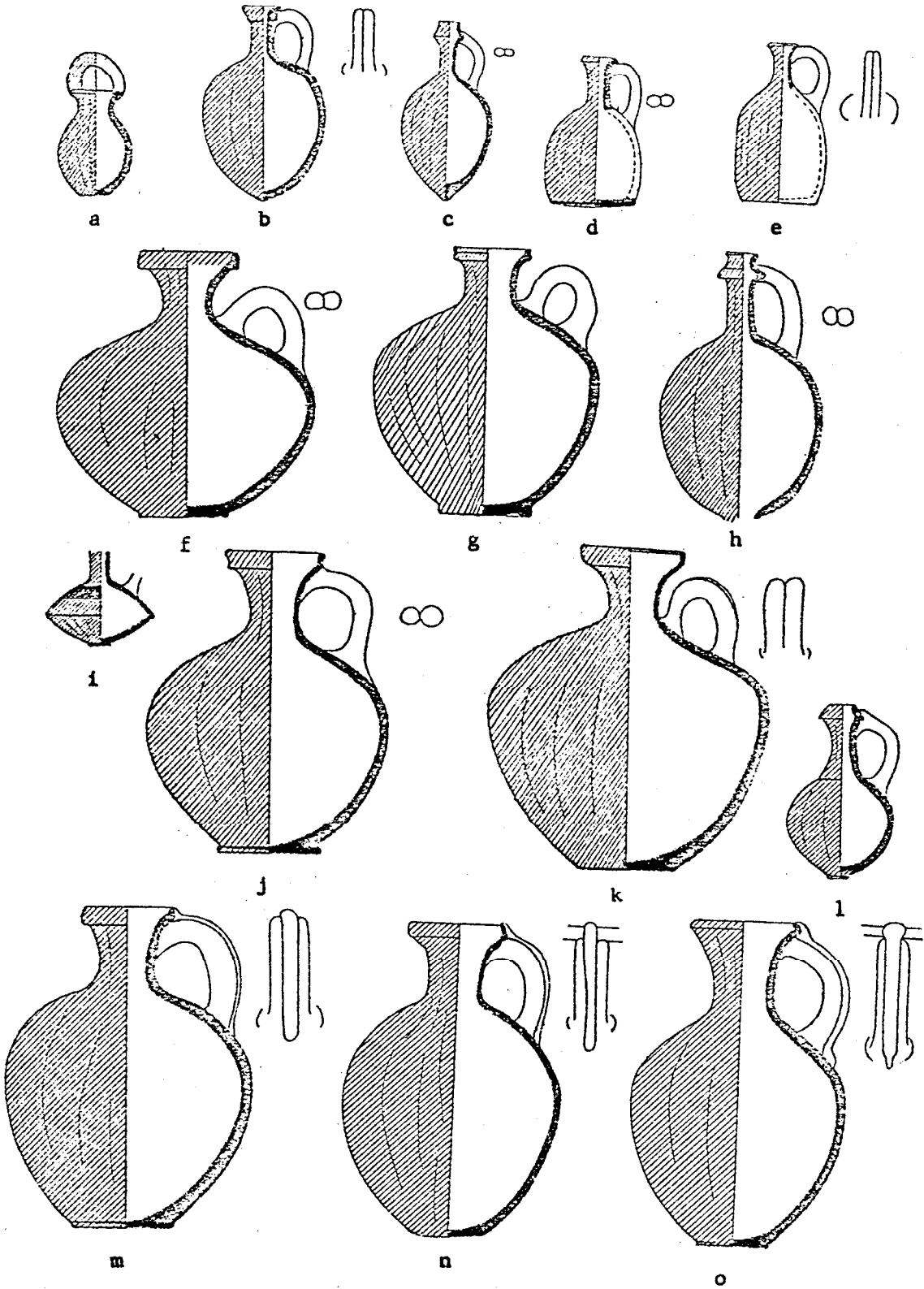


Fig. 313.--Megiddo: Pottery of the MB II B; Group B (Cont.)

Loud, Megiddo II.

- a. Plate 10, No. 5
- b. Plate 11, No. 11
- c. Plate 7, No. 24
- d. Plate 12, No. 5
- e. Plate 11, No. 24
- f. Plate 7, No. 22
- g. Plate 20, No. 12
- h. Plate 11, No. 14
- i. Plate 7, No. 19
- j. Plate 11, No. 22
- k. Plate 17, No. 13
- l. Plate 21, No. 6



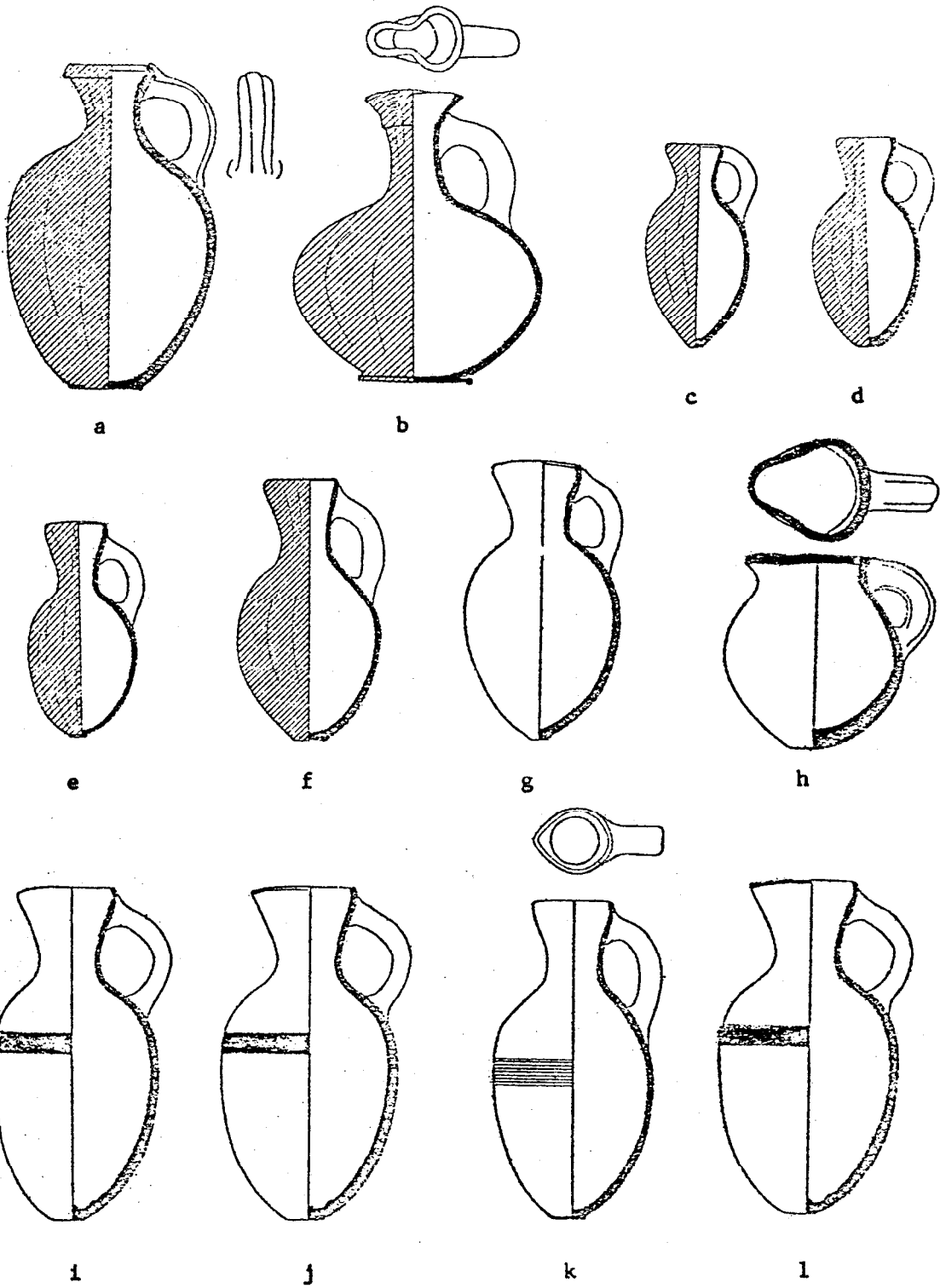
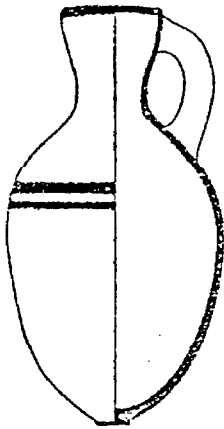
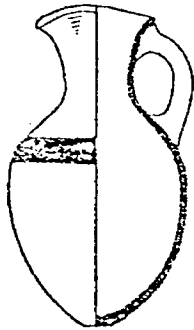


Fig. 314.--Megiddo: Pottery of the MB II B 2; Group B  
Loud, Megiddo II.

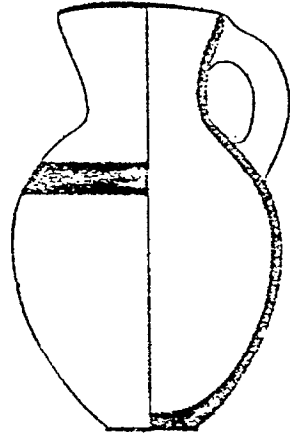
- a. Plate 11, No. 19
- b. Plate 21, No. 7
- c. Plate 11, No. 18
- d. Plate 12, No. 21
- e. Plate 8, No. 5
- f. Plate 12, No. 19
- g. Plate 18, No. 3



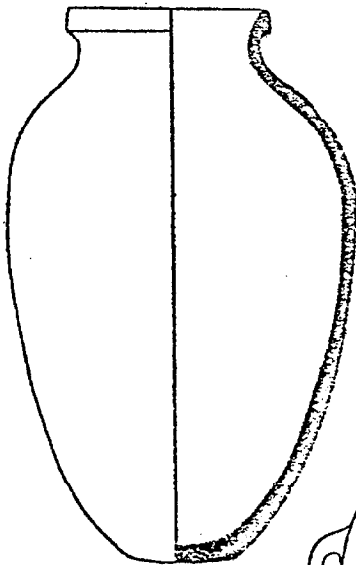
a



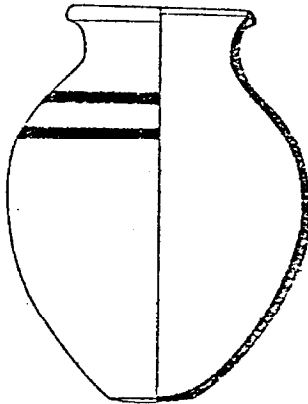
b



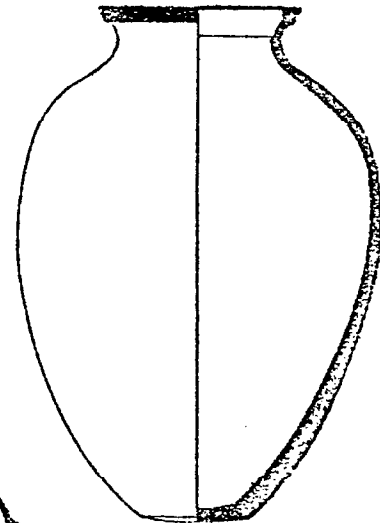
c



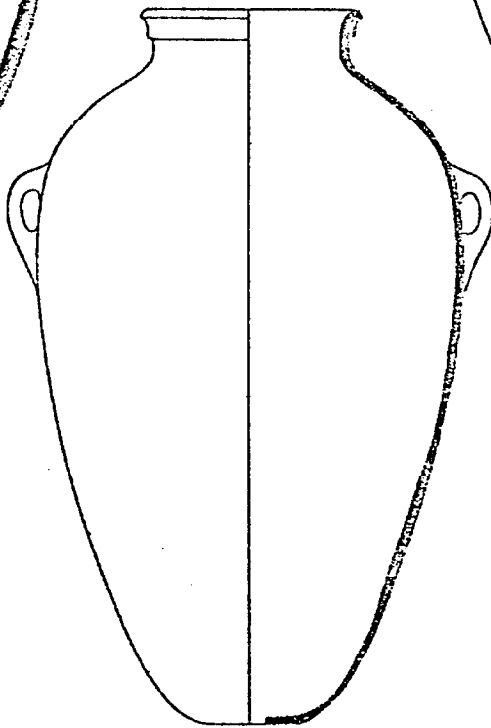
d



e



f



g

Fig. 315.--Megiddo: The MB II B: Group C

Loud, Megiddo II.

- a. Plate 19, No. 12
- b. Plate 19, No. 6
- c. Plate 19, No. 9
- d. Plate 29, No. 13
- e. Plate 14, No. 18
- f. Plate 15, No. 15
- g. Plate 19, No. 2
- h. Plate 14, No. 33
- i. Plate 15, No. 1
- j. Plate 21, No. 11
- k. Plate 19, No. 3
- l. Plate 14, No. 26
- m. Plate 16, No. 14
- n. Plate 18, No. 5
- o. Plate 11, No. 9
- p. Plate 10, No. 15
- q. Plate 11, No. 1
- r. Plate 17, No. 6
- s. Plate 17, No. 7
- t. Plate 10, No. 20

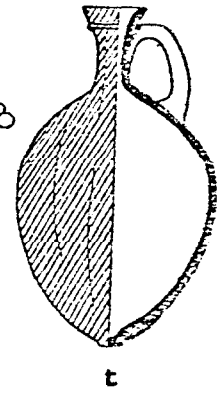
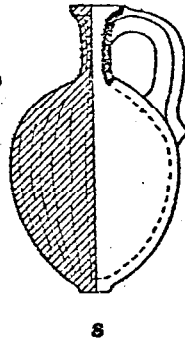
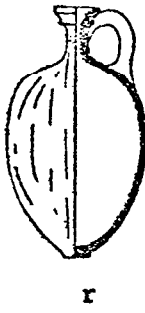
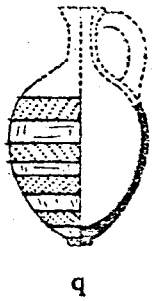
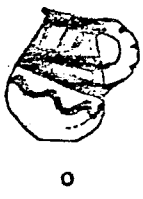
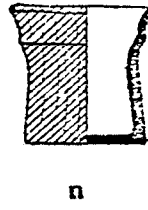
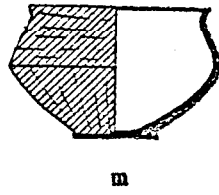
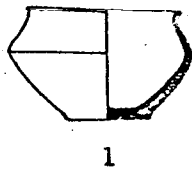
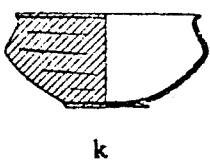
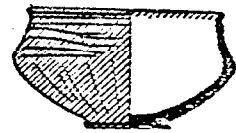
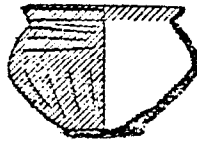
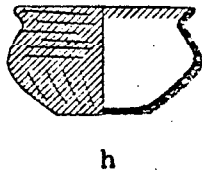
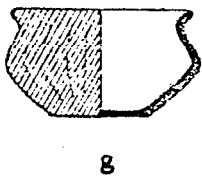
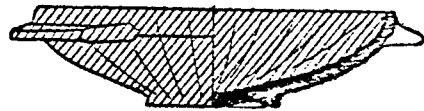
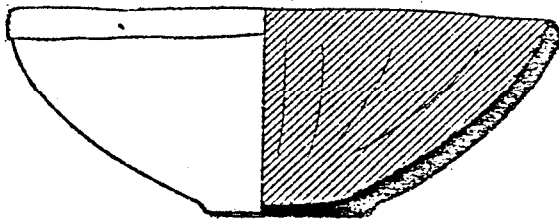
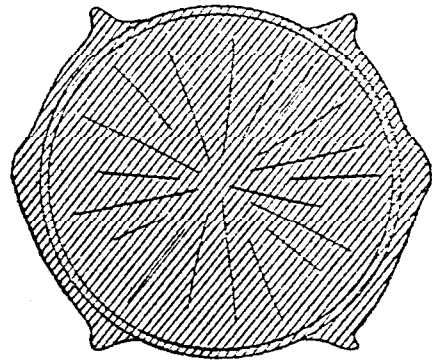
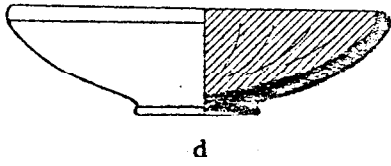
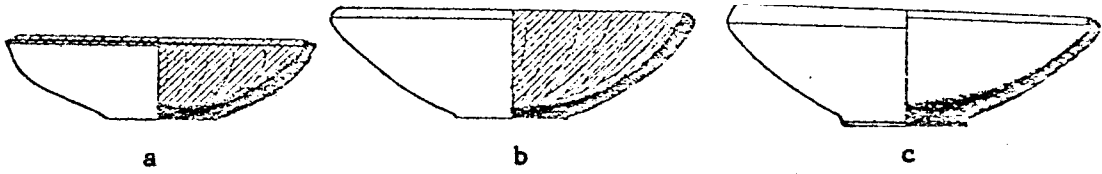


Fig. 316.--Megiddo: The MB II B: Group C (Cont.)

Loud, Megiddo II.

- a. Plate 11, No. 15
- b. Plate 17, No. 14
- c. Plate 16, No. 2
- d. Plate 11, No. 2
- e. Plate 7, No. 25
- f. Plate 12, No. 10
- g. Plate 25, No. 12
- h. Plate 12, No. 14
- i. Plate 12, No. 19
- j. Plate 12, No. 25
- k. Plate 12, No. 15
- l. Plate 12, No. 11
- m. Plate 7, No. 20
- n. Plate 12, No. 7

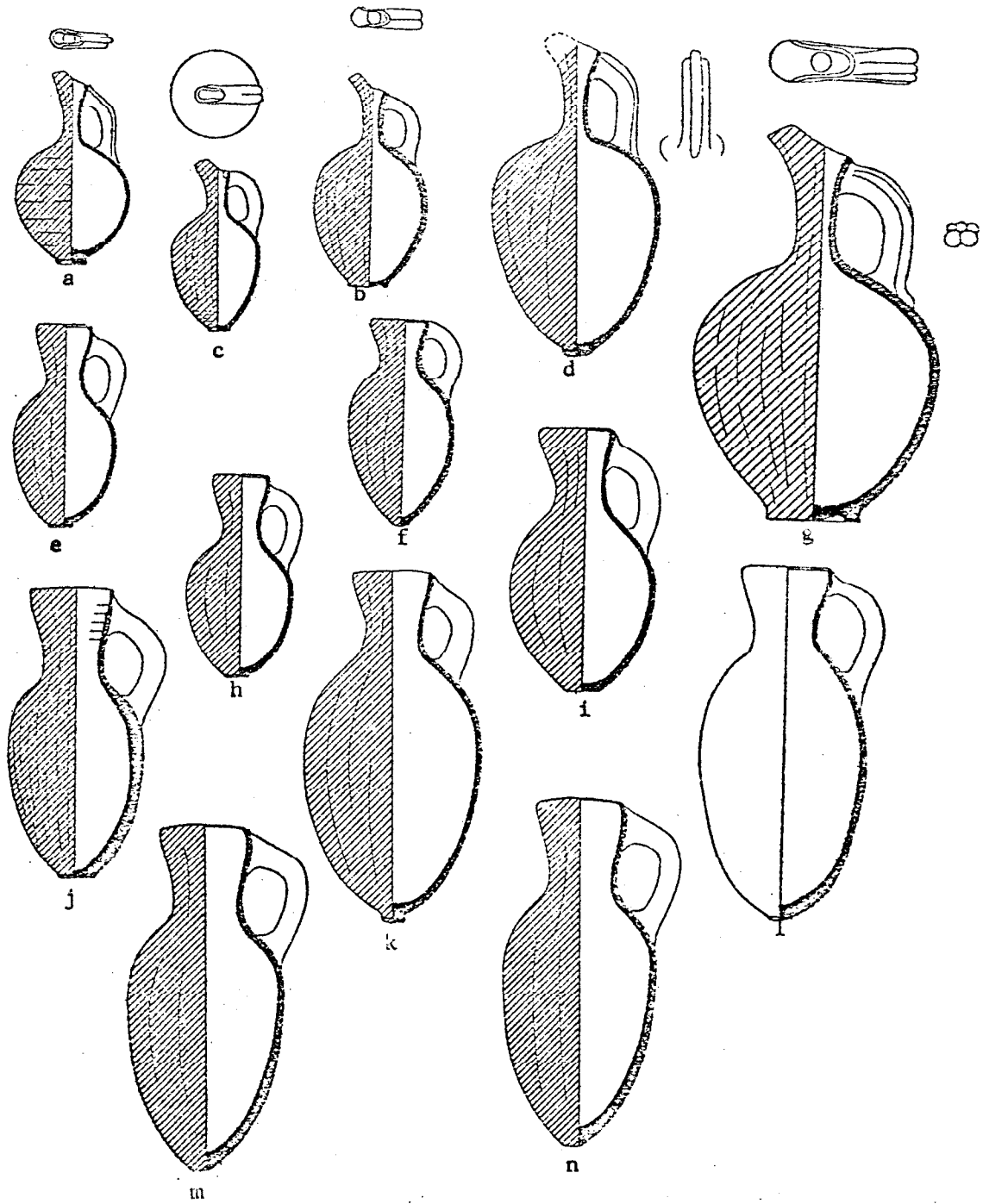
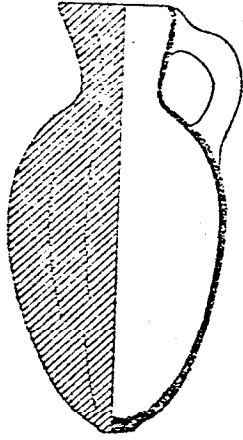


Fig. 317.--Megiddo: The MB II B: Group C (Cont.)

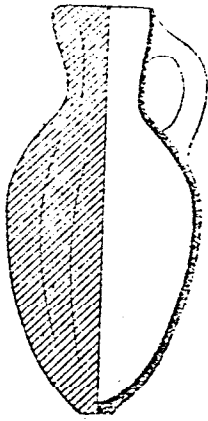
Loud, Megiddo II.

- a. Plate 16, No. 6
- b. Plate 12, No. 4
- c. Plate 12, No. 12
- d. Plate 25, No. 17
- e. Plate 7, No. 16
- f. Plate 7, No. 13
- g. Plate 10, No. 9
- h. Plate 20, No. 4
- i. Plate 17, No. 2
- j. Plate 16, No. 1

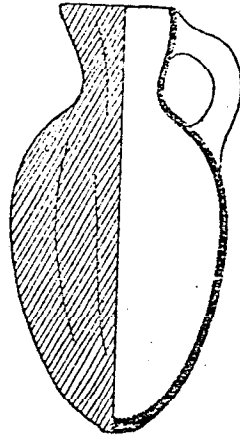




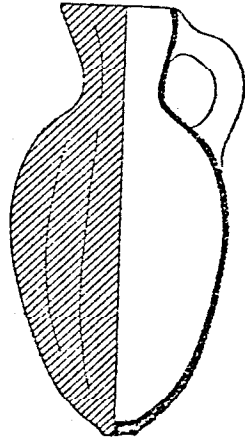
a



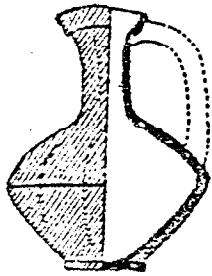
b



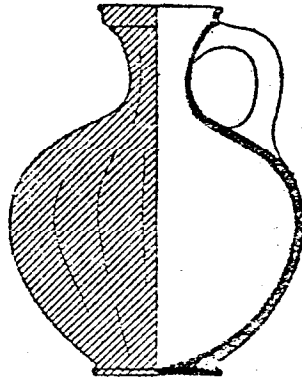
c



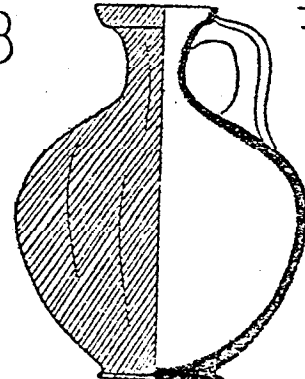
d



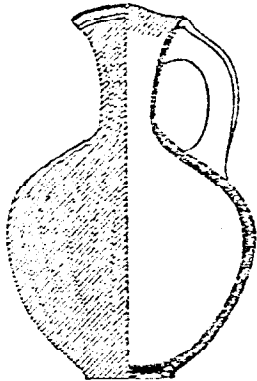
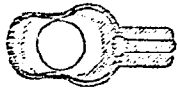
e



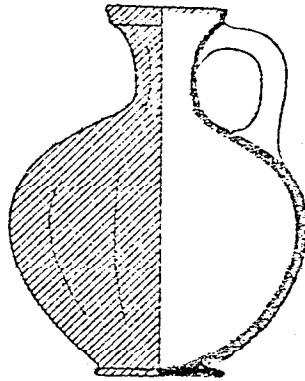
f



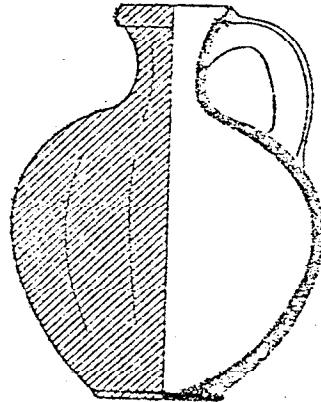
g



h



i



j

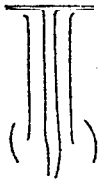
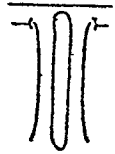


Fig. 318.--Megiddo: The MB II B; Group C (Cont.)

Loud, Megiddo II.

a. Plate 10, No. 8

b. Plate 10, No. 13

c. Plate 17, No. 1

d. Plate 12, No. 18

e. Plate 12, No. 17

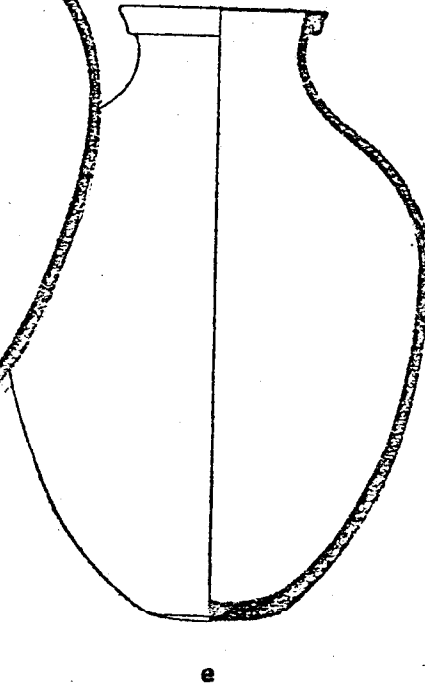
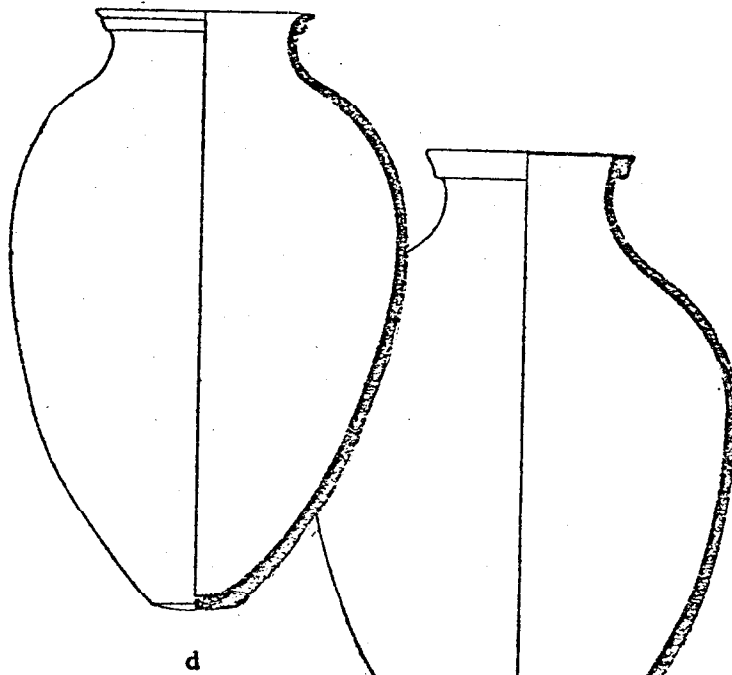
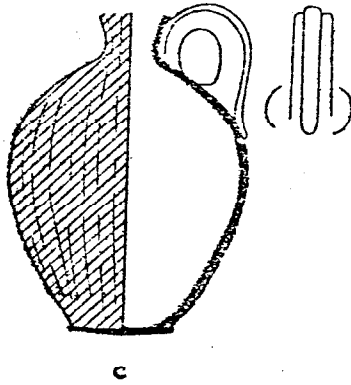
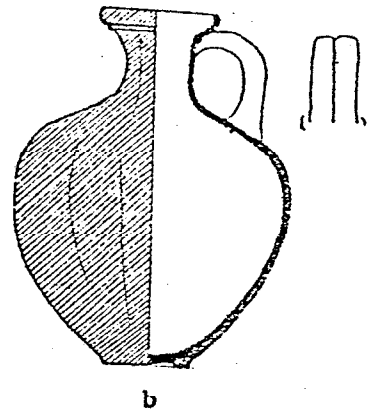
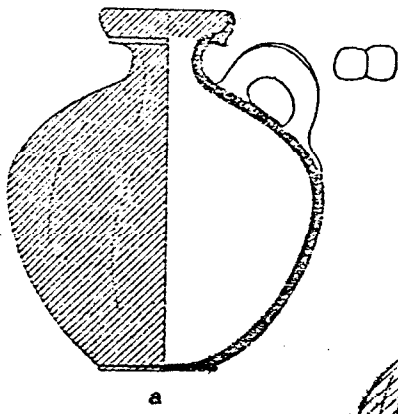
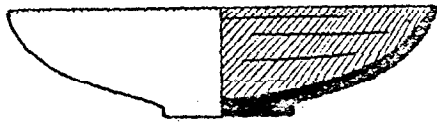


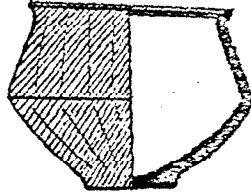
Fig. 319.--Megiddo: Pottery of the Transition from MB II to III;  
Tombs 3104 and 3129

Loud, Megiddo II.

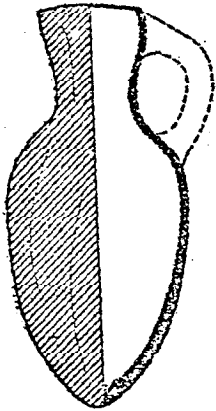
- a. Plate 29, No. 14
- b. Plate 28, No. 9
- c. Plate 26, No. 7
- d. Plate 24, No. 32
- e. Plate 25, No. 9



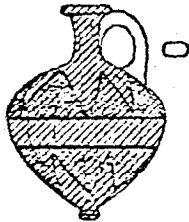
a



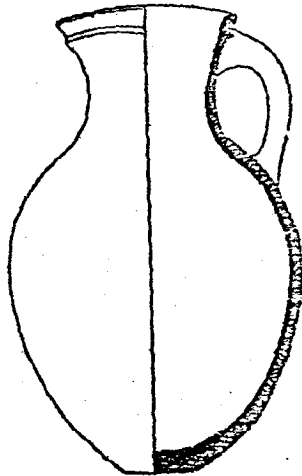
b



c



d



e

Fig. 320.--Megiddo: Pottery of the MB III A 1: Group A  
Loud, Megiddo II.

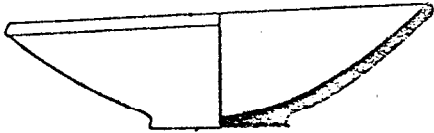
- a. Plate 22, No. 3
- b. Plate 21, No. 14
- c. Plate 21, No. 18
- d. Plate 29, No. 8
- e. Plate 38, No. 3
- f. Plate 29, No. 20
- g. Plate 21, No. 16
- h. Plate 29, No. 19
- i. Plate 37, No. 26
- j. Plate 45, No. 1
- k. Plate 21, No. 19
- l. Plate 37, No. 17
- m. Plate 45, No. 3
- n. Plate 29, No. 21



a



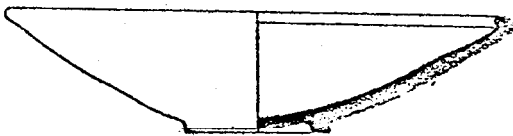
b



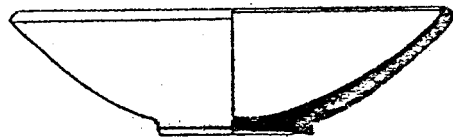
c



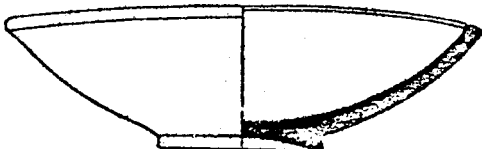
d



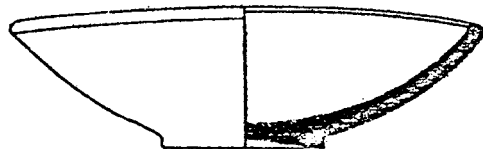
e



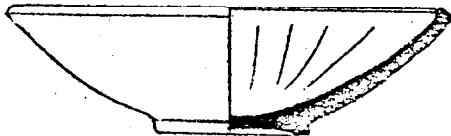
f



g



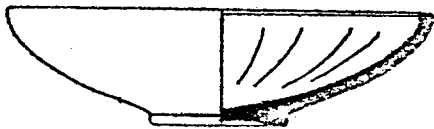
h



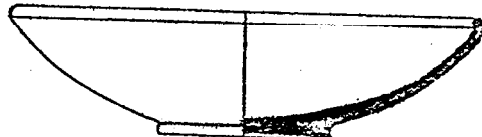
i



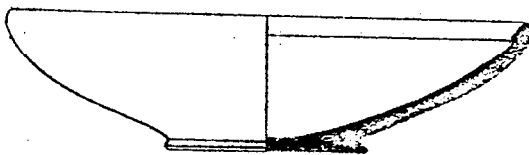
j



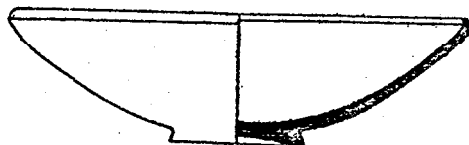
k



l



m



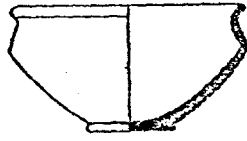
n

Fig. 321.--Megiddo: Pottery of the MB III A 1; Group A (Cont.)

Loud, Megiddo II.

- a. Plate 21, No. 9
- b. Plate 36, No. 14
- c. Plate 36, No. 11
- d. Plate 36, No. 12
- e. Plate 28, No. 10
- f. Plate 38, No. 21
- g. Plate 38, No. 20
- h. Plate 22, No. 7
- i. Plate 38, No. 14

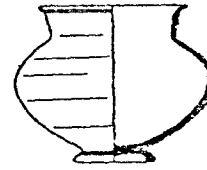




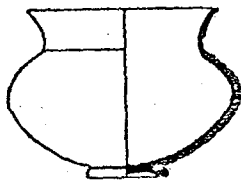
a



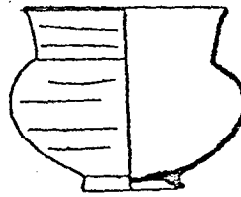
b



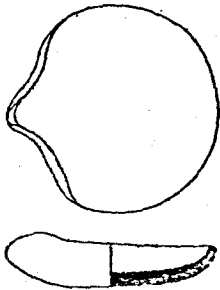
c



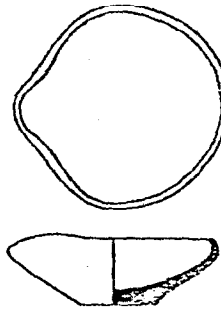
d



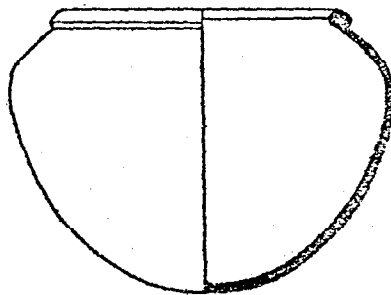
e



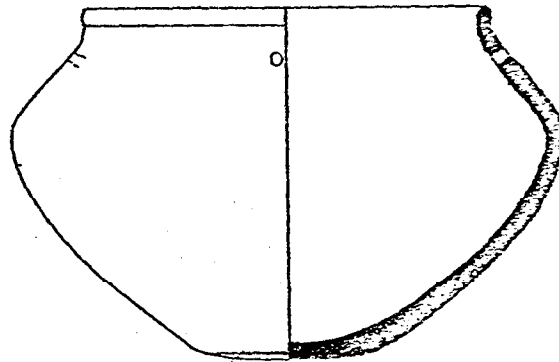
f



g



h



i

Fig. 322.--Megiddo: Pottery of the MB III A 1; Group A (Cont.)

Loud, Megiddo II.

- a. Plate 24, No. 5
- b. Plate 24, No. 15
- c. Plate 24, No. 7
- d. Plate 19, No. 25
- e. Plate 32, No. 30
- f. Plate 19, No. 28
- g. Plate 24, No. 23
- h. Plate 24, No. 19
- i. Plate 24, No. 31
- j. Plate 33, No. 2
- k. Plate 33, No. 9
- l. Plate 33, No. 10
- m. Plate 24, No. 20
- n. Plate 19, No. 30
- o. Plate 41, No. 3
- p. Plate 14, No. 24
- q. Plate 24, No. 13
- r. Plate 24, No. 18
- s. Plate 33, No. 11
- t. Plate 24, No. 10
- u. Plate 20, No. 17
- v. Plate 25, No. 3
- w. Plate 25, No. 4

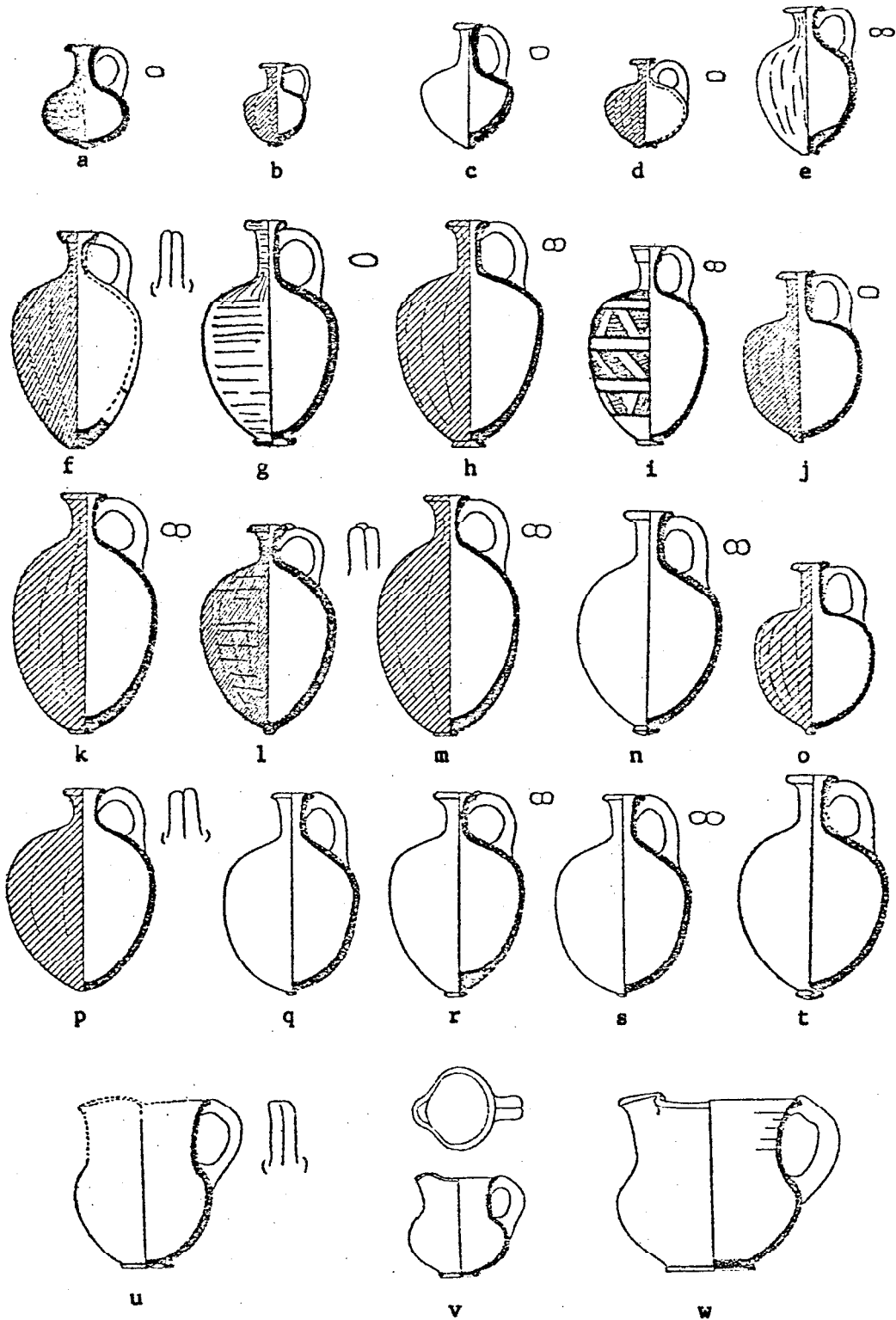


Fig. 323.--Megiddo: Pottery of the MB III A 1; Group A (Cont.)

Loud, Megiddo II.

- a. Plate 19, No. 21
- b. Plate 26, No. 9
- c. Plate 19, No. 22
- d. Plate 25, No. 18
- e. Plate 33, No. 20
- f. Plate 31, No. 4
- g. Plate 25, No. 15
- h. Plate 41, No. 11
- i. Plate 26, No. 2
- j. Plate 20, No. 9
- k. Plate 20, No. 8
- l. Plate 26, No. 3

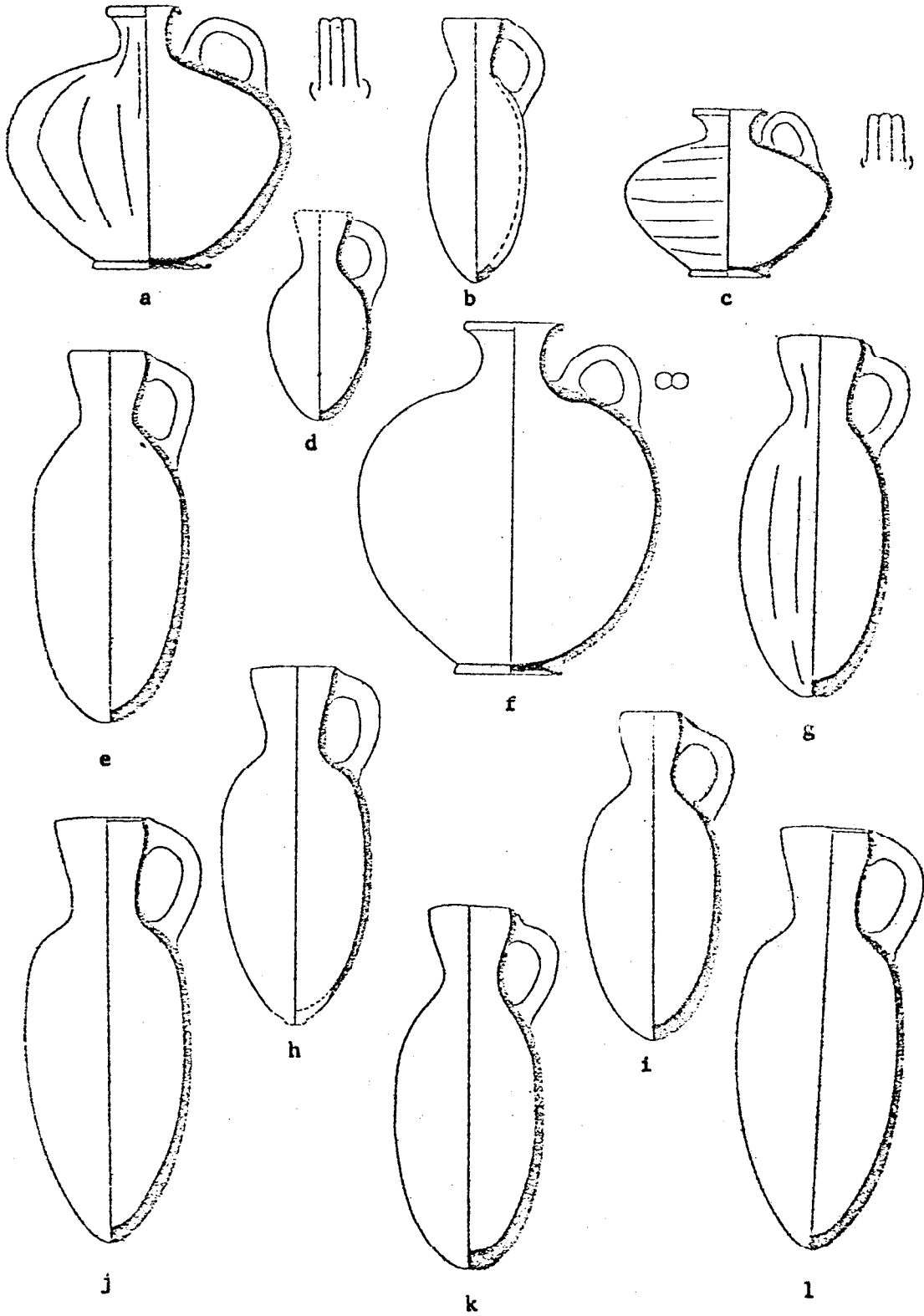


Fig. 324.--Megiddo: Pottery of the MB III A 1; Group A (Cont.)

Loud, Megiddo II.

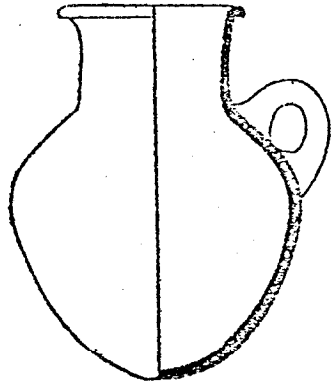
a. Plate 23, No. 9

b. Plate 31, No. 12

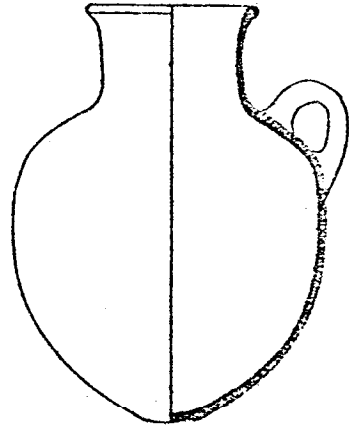
c. Plate 40, No. 2

d. Plate 23, No. 10

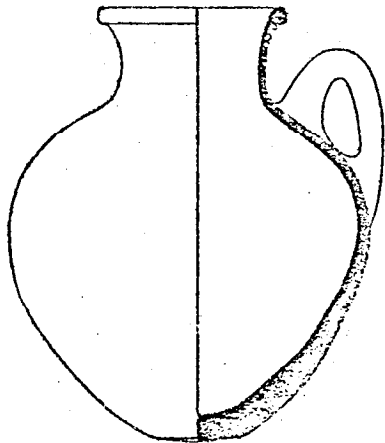
e. Plate 23, No. 7



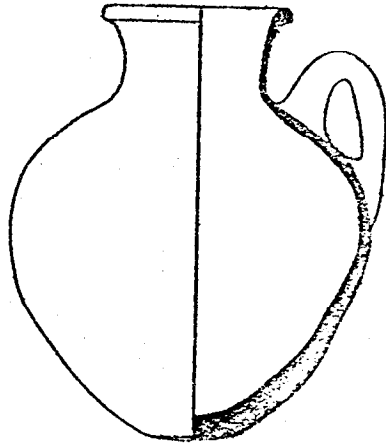
a



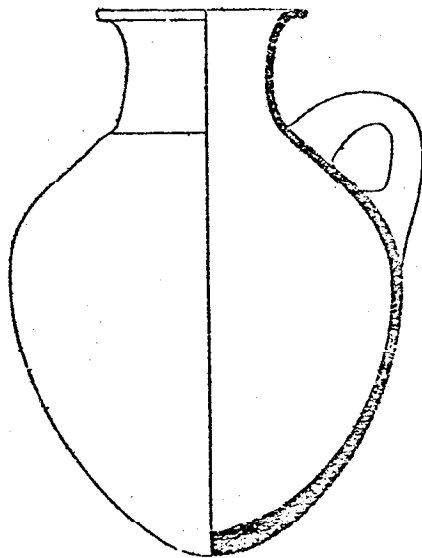
b



c



d



e

Fig. 325.--Megiddo: Pottery of the MB III A 1; Group A (Cont.)

Loud, Megiddo II.

a. Plate 27, No. 4

b. Plate 21, No. 1

c. Plate 27, No. 5



1446

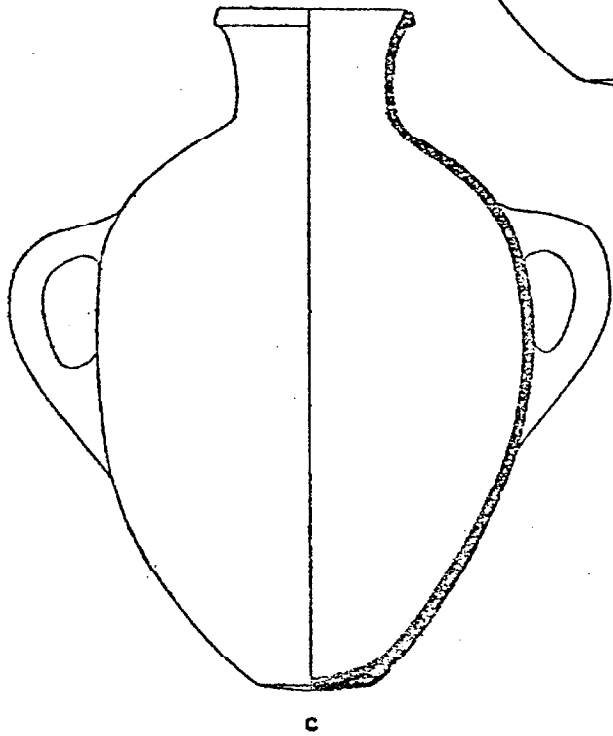
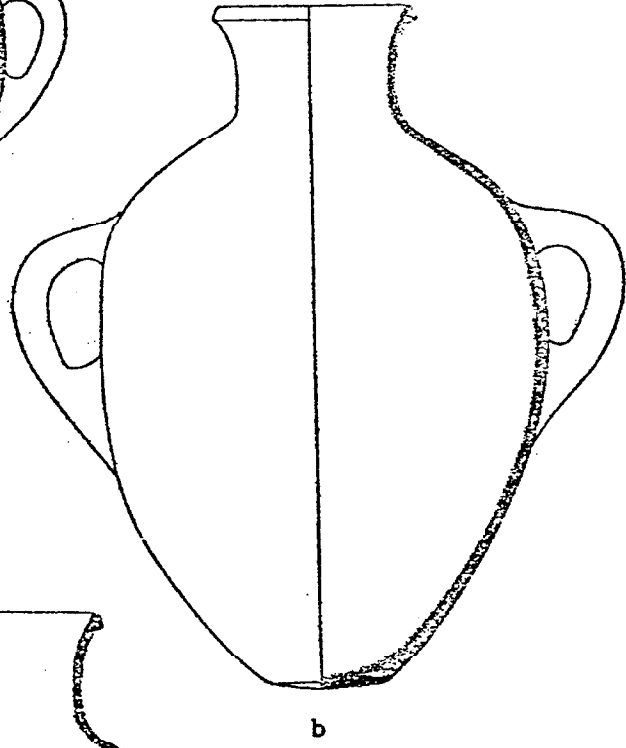
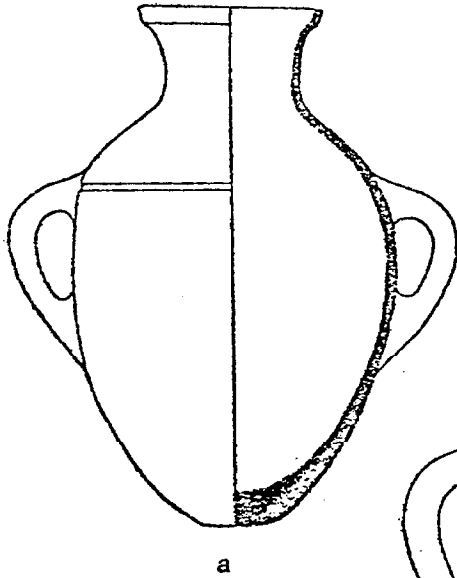


Fig. 326.--Megiddo: Pottery of the MB III A: Tomb 4110

Loud, Megiddo II.

a. Plate 14, No. 13

b. Plate 14, No. 2

c. Plate 15, No. 9

d. Plate 15, No. 10

1448

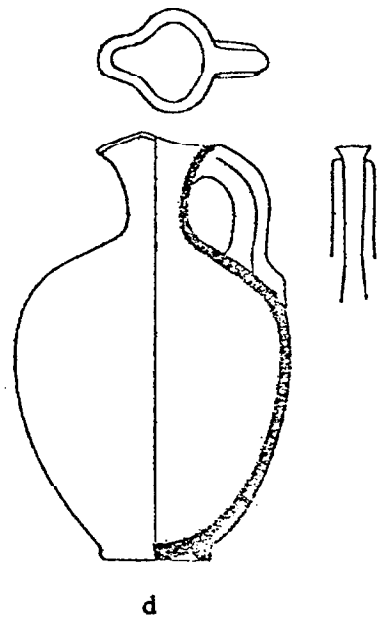
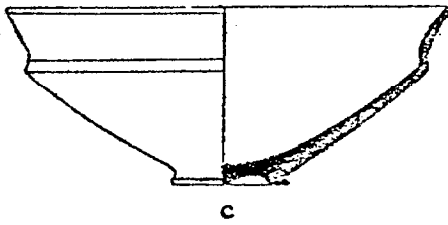
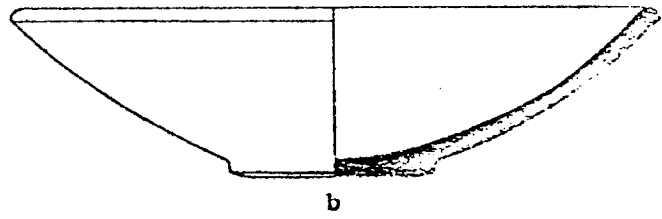
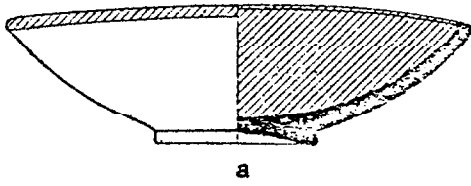


Fig. 327.--Megiddo: Pottery of the MB III A 2; Group B

Loud, Megiddo II.

- a. Plate 29, No. 16
- b. Plate 29, No. 22
- c. Plate 37, No. 14
- d. Plate 44, No. 41
- e. Plate 45, No. 2
- f. Plate 21, No. 15
- g. Plate 29, No. 9
- h. Plate 37, No. 15
- i. Plate 38, No. 7
- j. Plate 29, No. 23
- k. Plate 29, No. 15
- l. Plate 45, No. 5
- m. Plate 29, No. 30
- n. Plate 29, No. 24
- o. Plate 38, No. 12
- p. Plate 28, No. 3

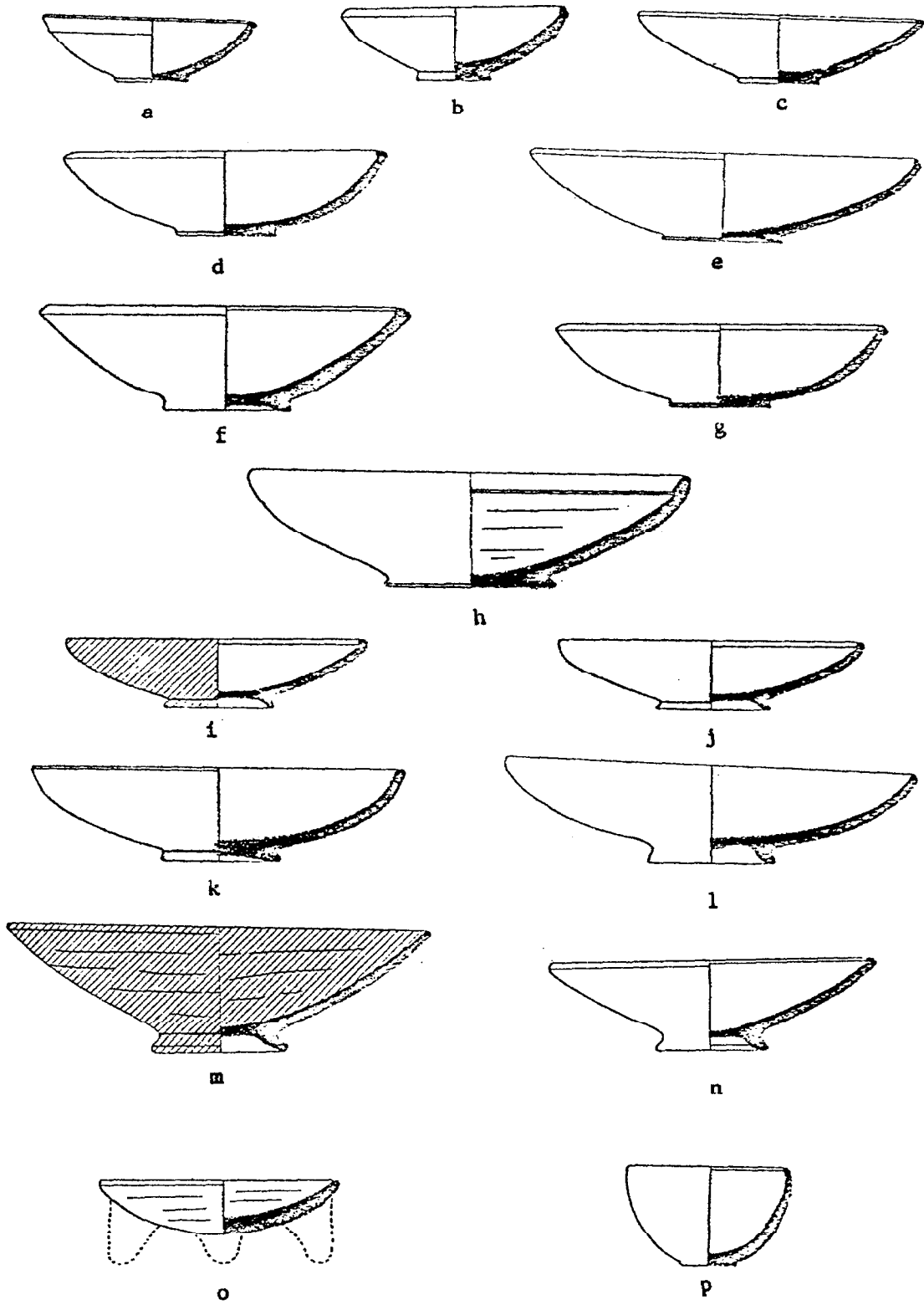
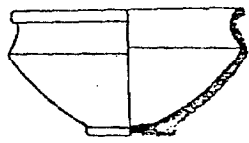


Fig. 328.--Megiddo: Pottery of the MB III A 2; Group B (Cont.)

Loud, Megiddo II.

- a. Plate 28, No. 7
- b. Plate 28, No. 19
- c. Plate 44, No. 19
- d. Plate 44, No. 16
- e. Plate 21, No. 12
- f. Plate 28, No. 13
- g. Plate 28, No. 17
- h. Plate 36, No. 19
- i. Plate 36, No. 18
- j. Plate 29, No. 1
- k. Plate 36, No. 21
- l. Plate 19, No. 5
- m. Plate 28, No. 12
- n. Plate 28, No. 14
- o. Plate 37, No. 6
- p. Plate 38, No. 19
- q. Plate 38, No. 11



a



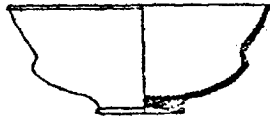
b



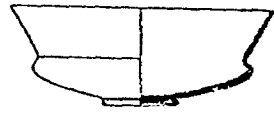
c



d



e



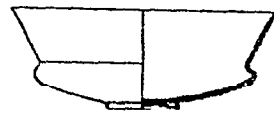
f



g



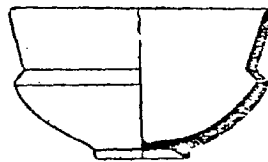
h



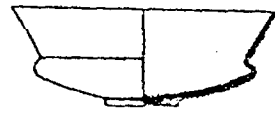
i



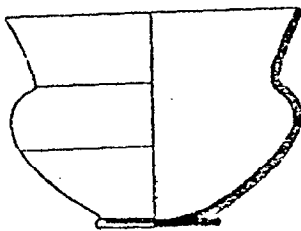
j



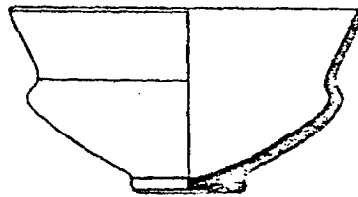
k



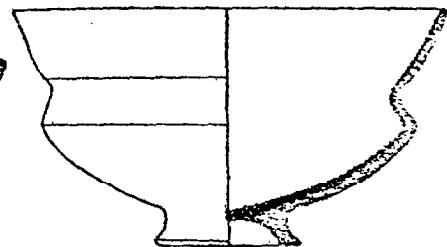
l



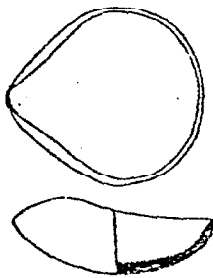
m



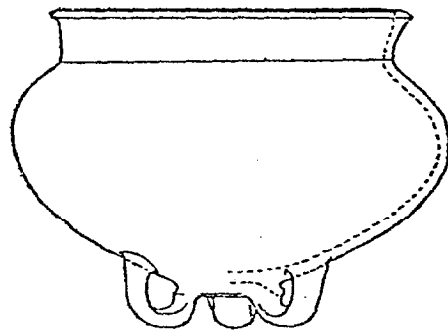
n



o



p



q

Fig. 329.--Megiddo: Pottery of the MB III A 2; Group B (Cont.)

Loud, Megiddo II.

- a. Plate 24, No. 29
- b. Plate 24, No. 1
- c. Plate 24, No. 11
- d. Plate 40, No. 20
- e. Plate 24, No. 8
- f. Plate 24, No. 27
- g. Plate 24, No. 3
- h. Plate 32, No. 18
- i. Plate 24, No. 2
- j. Plate 32, No. 23
- k. Plate 24, No. 17
- l. Plate 41, No. 6
- m. Plate 41, No. 7
- n. Plate 40, No. 19
- o. Plate 33, No. 12
- p. Plate 17, No. 4
- q. Plate 24, No. 26
- r. Plate 24, No. 4
- s. Plate 24, No. 22
- t. Plate 24, No. 25
- u. Plate 32, No. 24
- v. Plate 24, No. 6



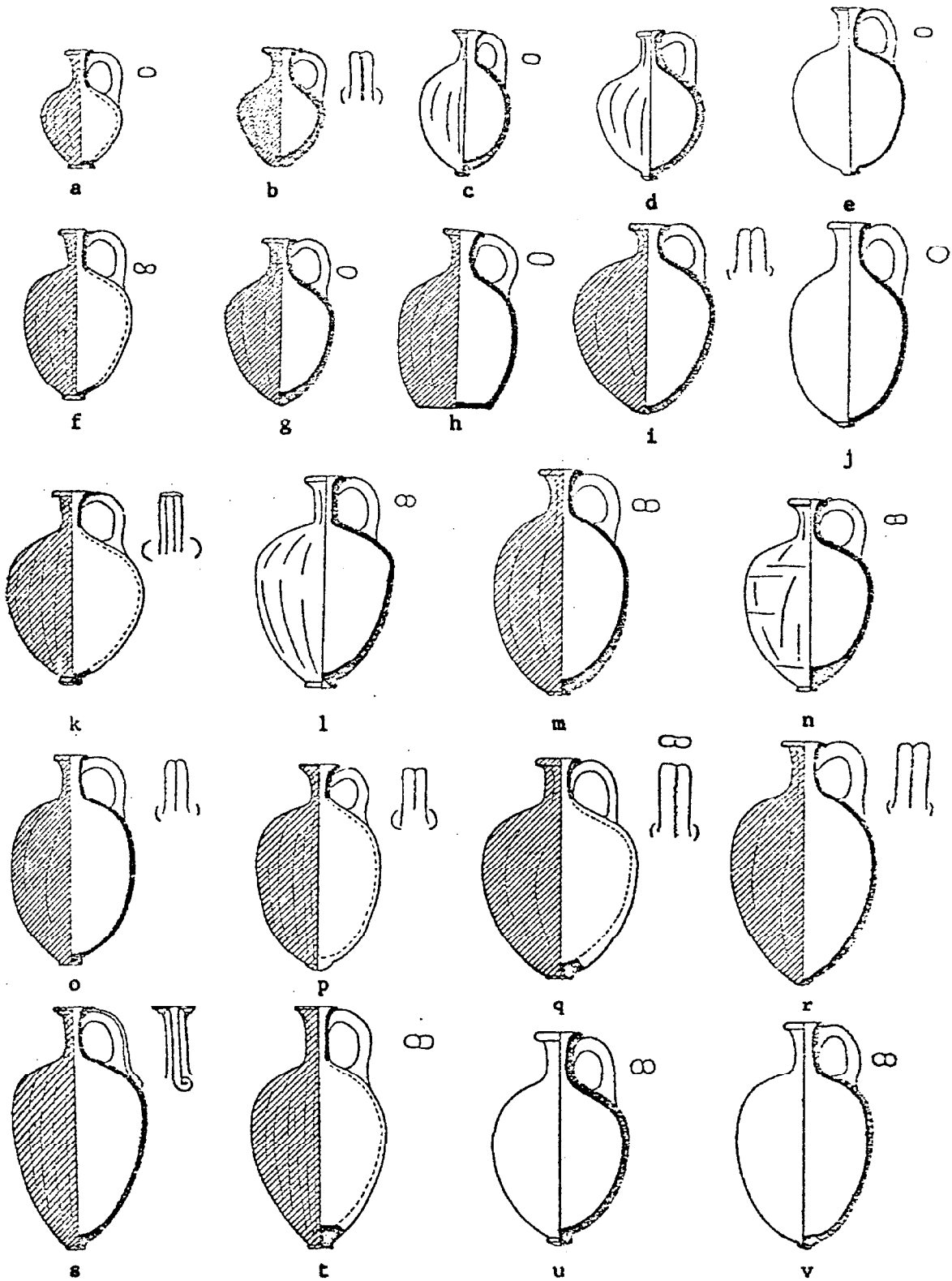


Fig. 330.--Megiddo: Pottery of the MB III A 2; Group B (Cont.)

Loud, Megiddo II.

a. Plate 41, No. 31

b. Plate 24, No. 36

c. Plate 25, No. 1

d. Plate 34, No. 7

e. Plate 25, No. 7

f. Plate 23, No. 1

g. Plate 31, No. 13

h. Plate 24, No. 35

i. Plate 31, No. 1

j. Plate 23, No. 5

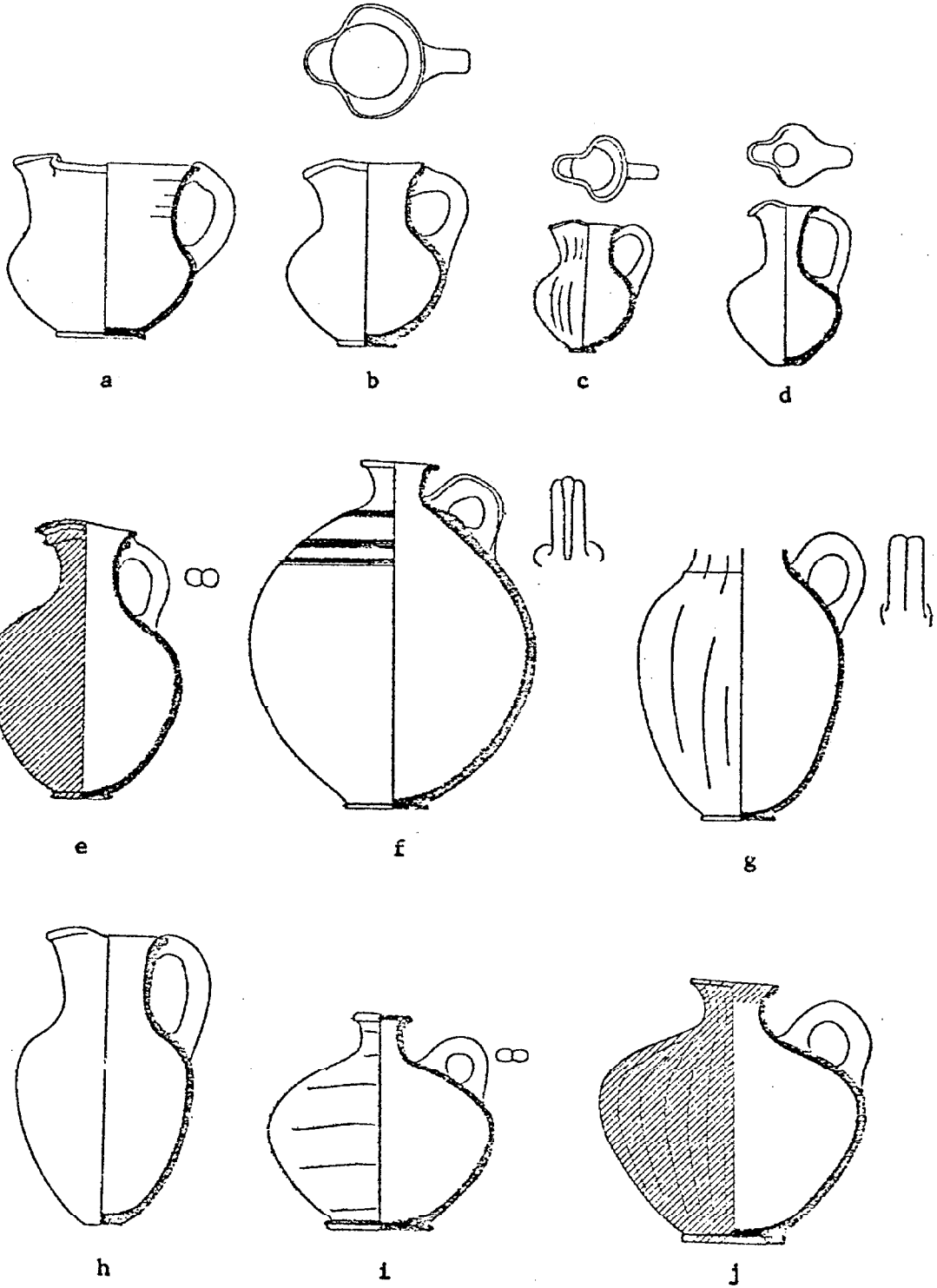
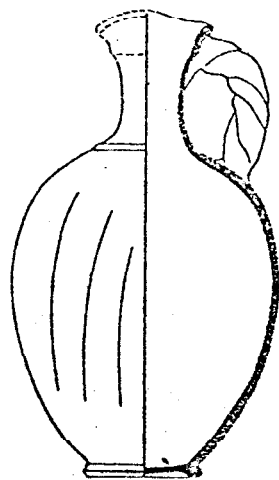


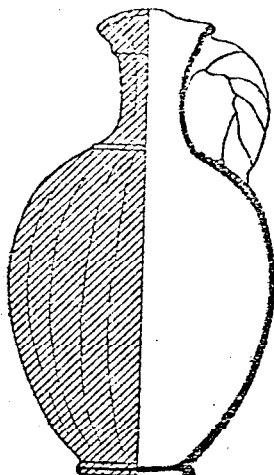
Fig. 331.--Megiddo: Pottery of the MB III A 2; Group B (Cont.)

Loud, Megiddo II.

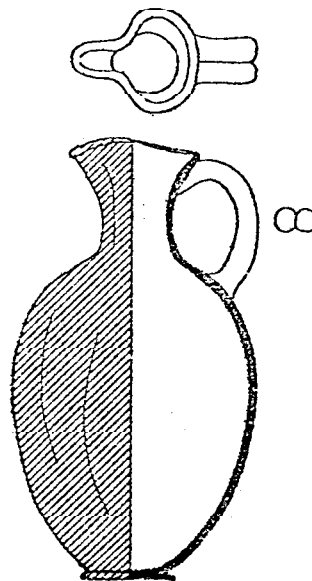
- a. Plate 34, No. 11
- b. Plate 25, No. 8
- c. Plate 25, No. 11
- d. Plate 25, No. 22
- e. Plate 26, No. 6
- f. Plate 33, No. 23
- g. Plate 25, No. 14
- h. Plate 41, No. 12
- i. Plate 26, No. 1
- j. Plate 17, No. 22



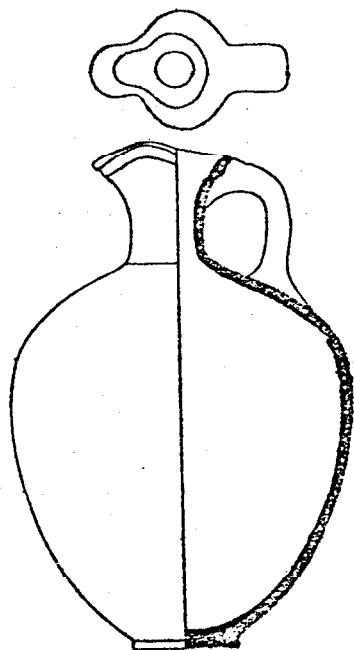
a



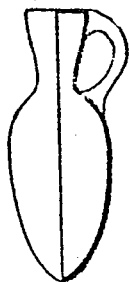
b



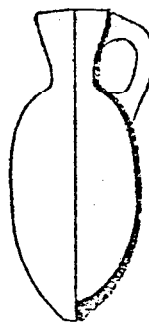
c



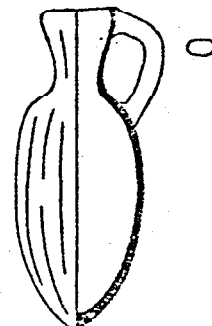
g



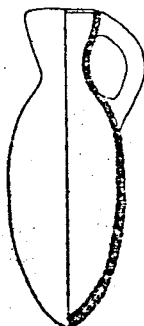
d



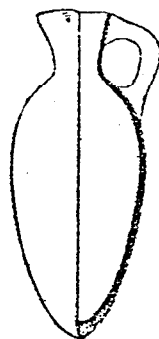
e



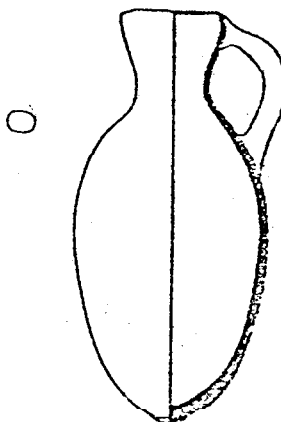
f



h



i



j

Fig. 332.--Megiddo: Pottery of the MB III A 2; Group B (Cont.)

Loud, Megiddo II.

- a. Plate 26, No. 5
- b. Plate 25, No. 21
- c. Plate 26, No. 4
- d. Plate 34, No. 3
- e. Plate 23, No. 6
- f. Plate 23, No. 8

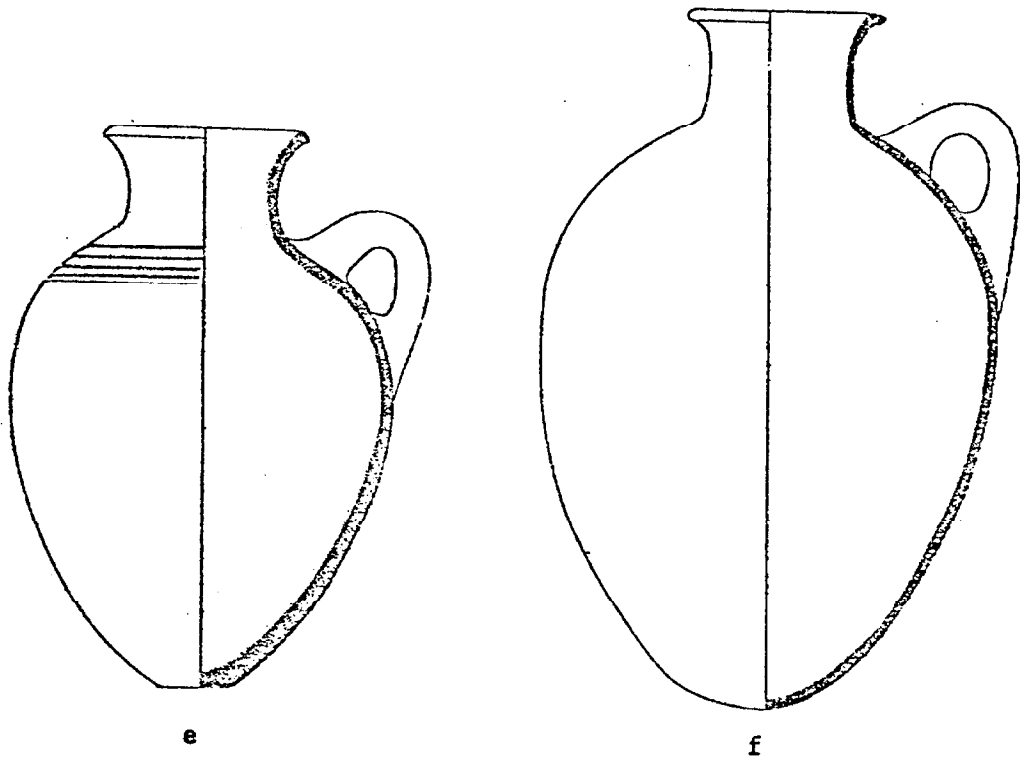
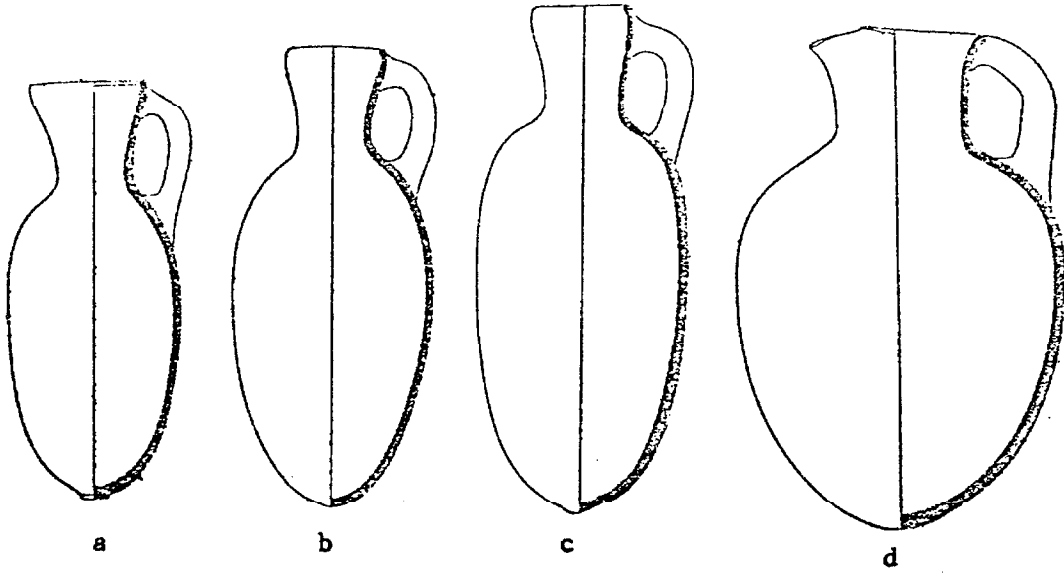


Fig. 333.--Megiddo: Pottery of the MB III A 2; Group B (Cont.)

Loud, Megiddo II.

a. Plate 27, No. 2

b. Plate 31, No. 11

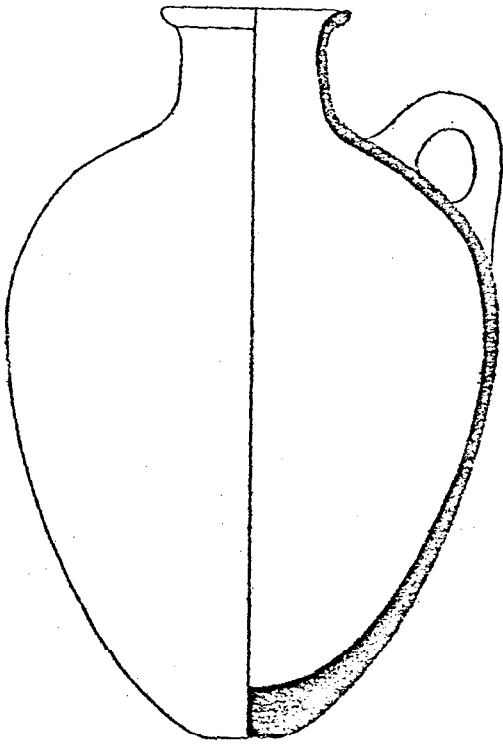
c. Plate 26, No. 20

d. Plate 21, No. 3

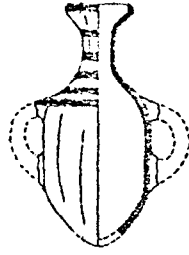
e. Plate 35, No. 3



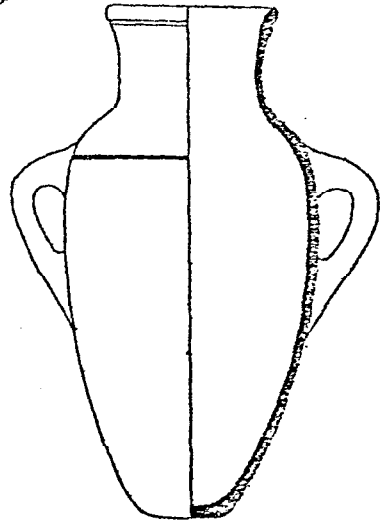
1462



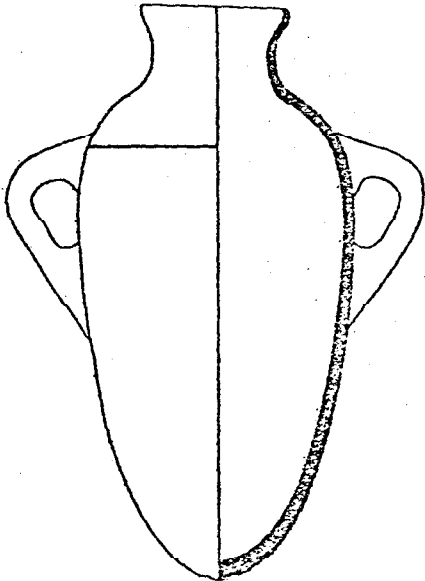
b



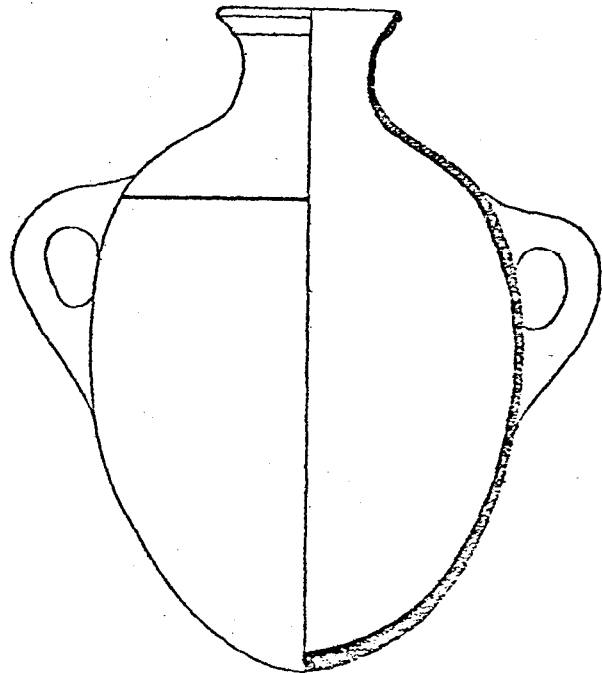
a



c



d



e

Fig. 334.--Megiddo: Pottery of the MB III A 2 (b); Group B 2

Loud, Megiddo II.

- a. Plate 37, No. 22
- b. Plate 29, No. 18
- c. Plate 37, No. 20
- d. Plate 37, No. 25
- e. Plate 36, No. 14
- f. Plate 28, No. 15
- g. Plate 25, No. 5
- h. Plate 30, No. 2
- i. Plate 25, No. 13
- j. Plate 24, No. 21
- k. Plate 24, No. 16
- l. Plate 33, No. 18
- m. Plate 26, No. 10
- n. Plate 26, No. 8
- o. Plate 33, No. 25
- p. Plate 34, No. 18

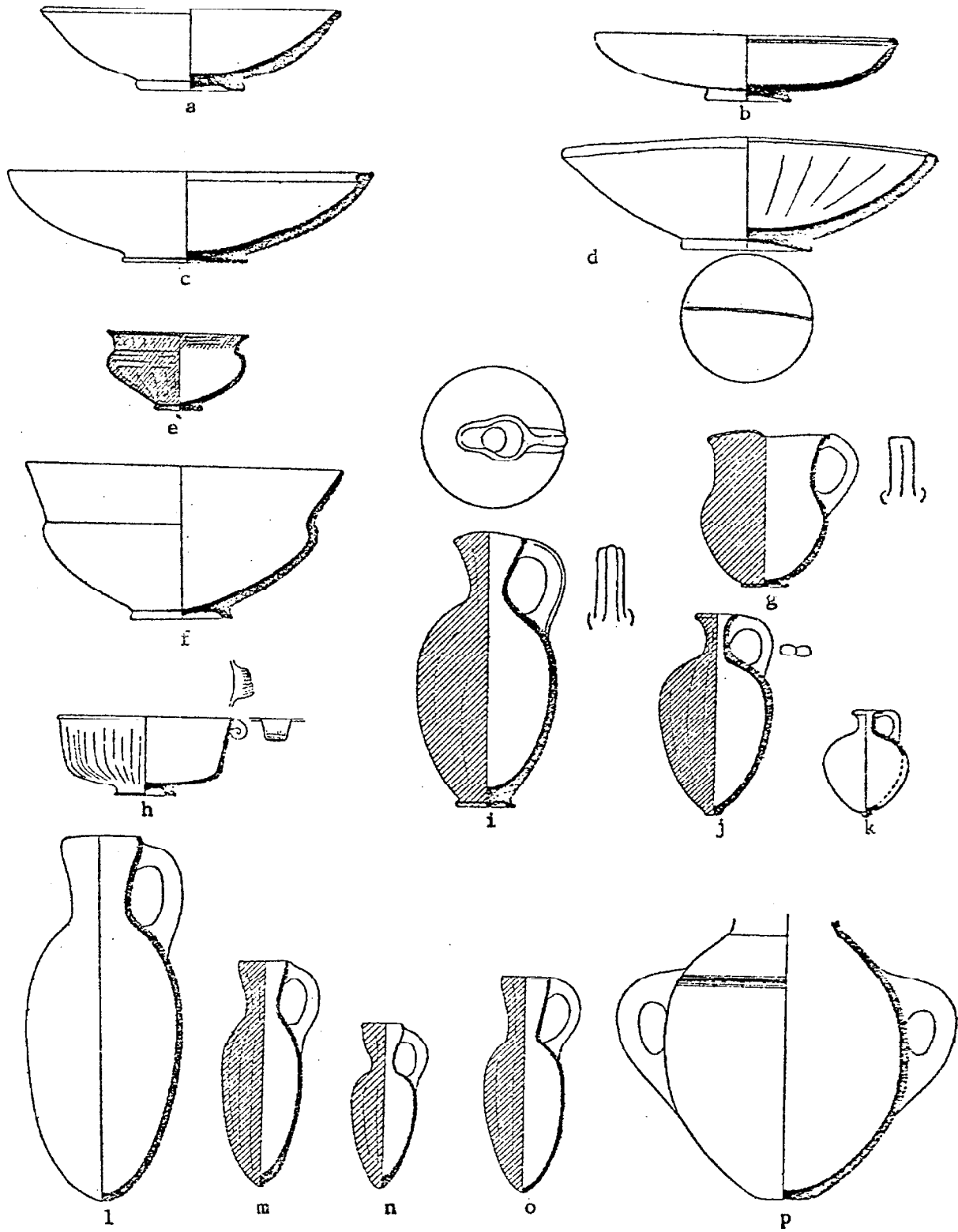


Fig. 335.--Megiddo: Cypriote Pottery of the MB III A 2 (b)

Loud, Megiddo II.

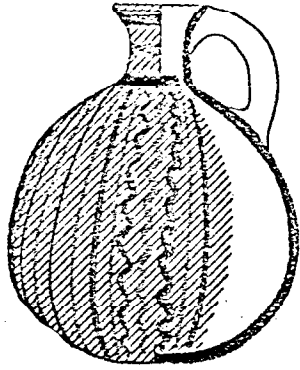
a. Plate 26, No. 17

b. Plate 34, No. 12

c. Plate 34, No. 9

d. Plate 26, No. 15

e. Plate 34, No. 13



a



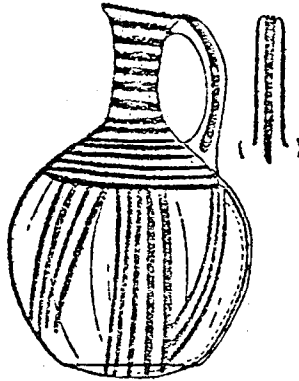
b



c



d



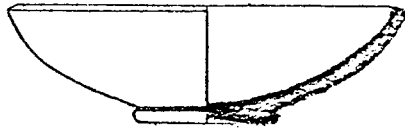
e

Fig. 336.--Megiddo: Pottery of the MB III B 1; Group C  
Loud, Megiddo II.

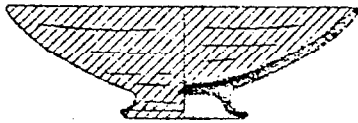
- a. Plate 37, No. 10
- b. Plate 37, No. 18
- c. Plate 38, No. 5
- d. Plate 38, No. 9
- e. Plate 38, No. 2
- f. Plate 29, No. 26
- g. Plate 37, No. 24
- h. Plate 38, No. 6
- i. Plate 30, No. 1
- j. Plate 36, No. 8
- k. Plate 37, No. 21
- l. Plate 44, No. 15
- m. Plate 37, No. 2
- n. Plate 37, No. 7
- o. Plate 37, No. 3
- p. Plate 36, No. 16



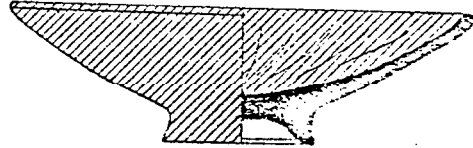
a



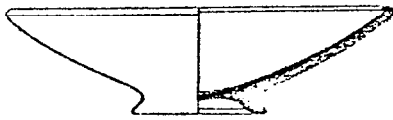
b



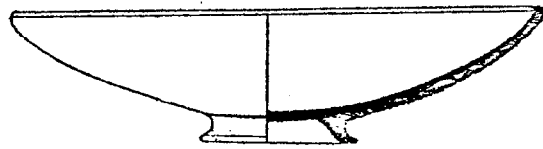
c



d



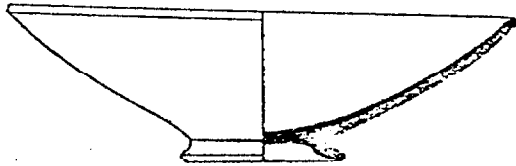
e



f



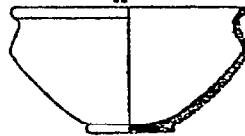
g



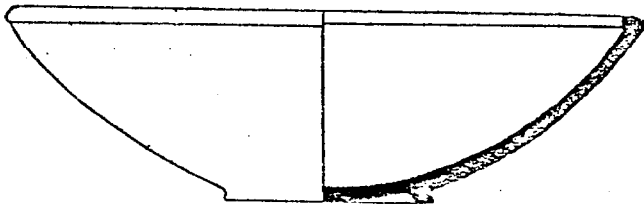
h



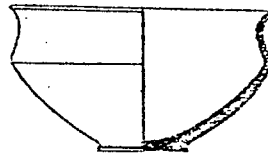
i



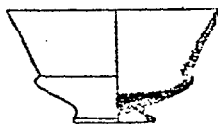
j



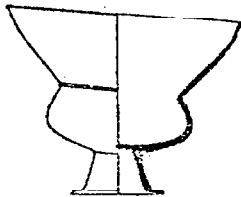
k



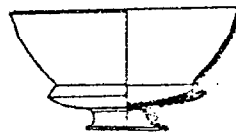
l



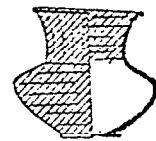
m



n



o



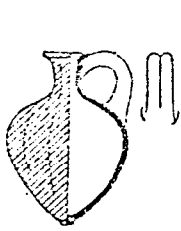
p

Fig. 337.--Megiddo: Pottery of the MB III B 1; Group C (Cont.)

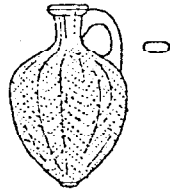
Loud, Megiddo II.

- a. Plate 33, No. 6
- b. Plate 32, No. 31
- c. Plate 32, No. 32
- d. Plate 32, No. 22
- e. Plate 33, No. 5
- f. Plate 32, No. 27
- g. Plate 33, No. 4
- h. Plate 33, No. 7
- i. Plate 32, No. 10
- j. Plate 32, No. 19
- k. Plate 32, No. 12
- l. Plate 32, No. 6
- m. Plate 32, No. 9
- n. Plate 32, No. 15
- o. Plate 41, No. 1
- p. Plate 33, No. 21
- q. Plate 33, No. 17
- r. Plate 40, No. 18

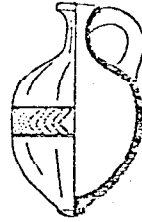




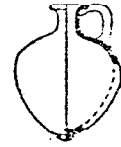
a



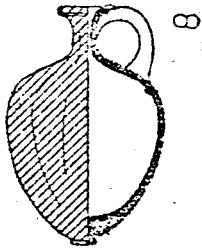
b



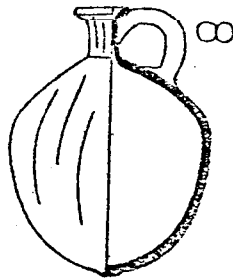
c



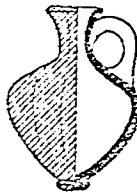
d



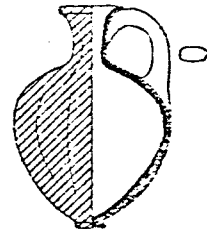
e



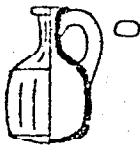
f



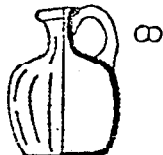
g



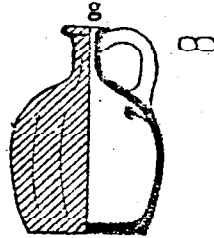
h



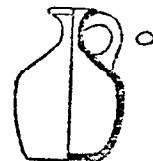
i



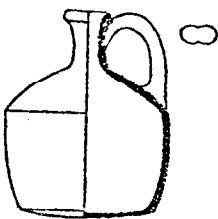
j



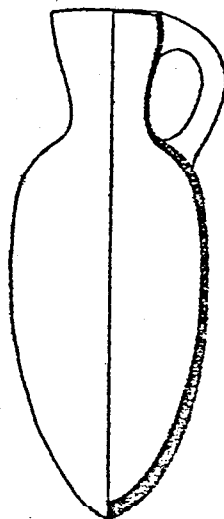
k



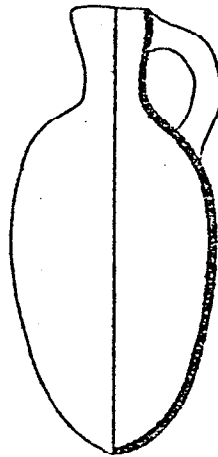
l



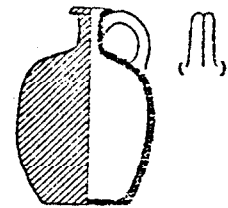
m



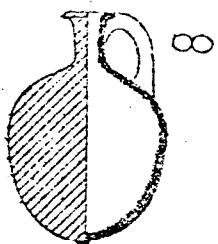
p



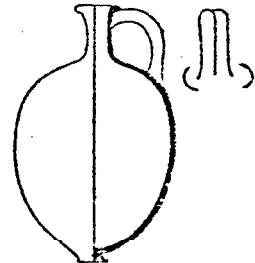
q



n



o



r

Fig. 338.--Megiddo: Pottery of the MB III B 1; Group C (Cont.)

Loud, Megiddo II.

- a. Plate 31, No. 5
- b. Plate 33, No. 26
- c. Plate 31, No. 6
- d. Plate 41, No. 17
- e. Plate 31, No. 9
- f. Plate 32, No. 2
- g. Plate 32, No. 3

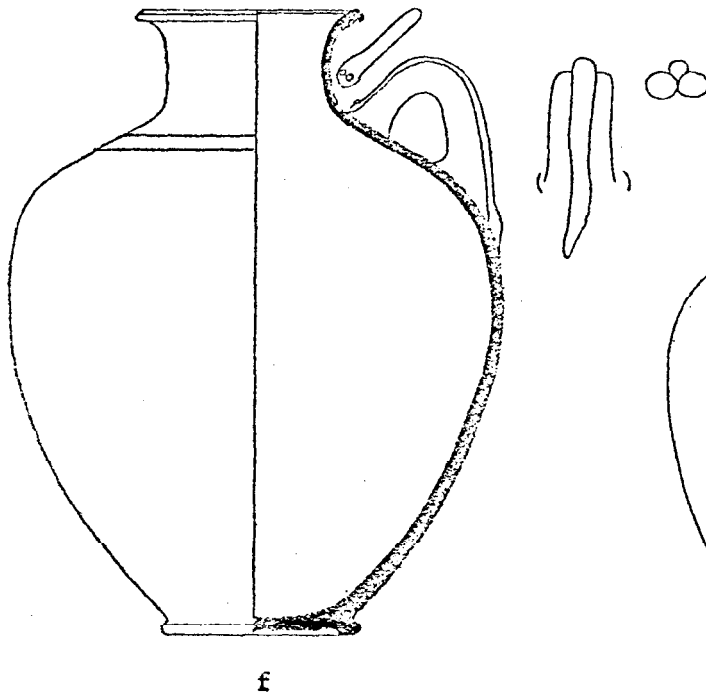
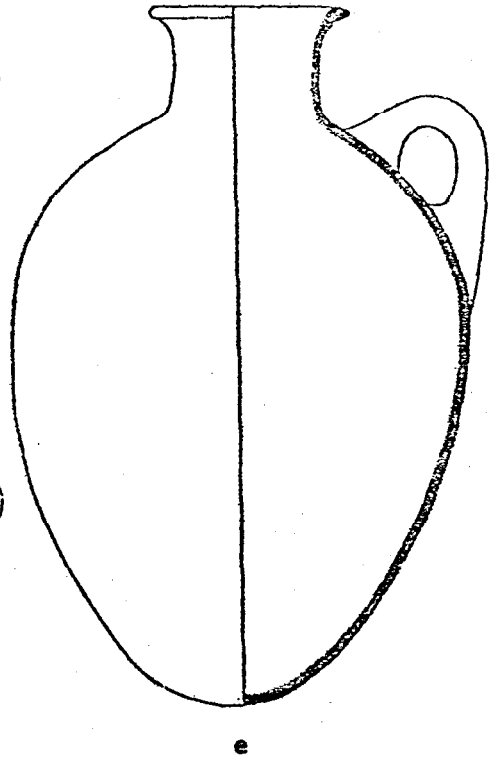
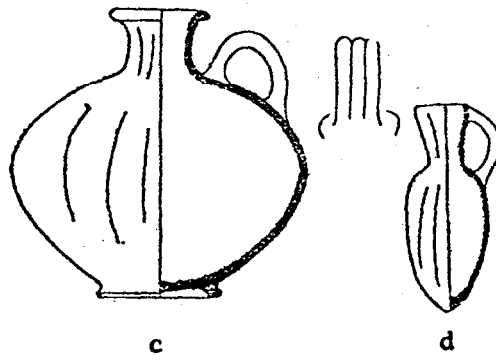
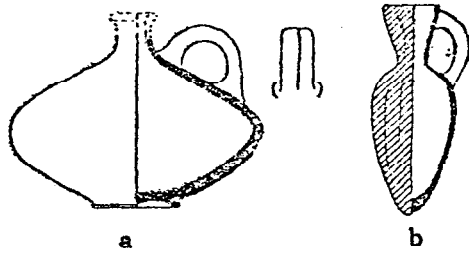


Fig. 339.--Megiddo: Pottery of the MB III B 1; Group C (Cont.)

Loud, Megiddo II.

- a. Plate 38, No. 22
- b. Plate 33, No. 30
- c. Plate 33, No. 31
- d. Plate 35, No. 4
- e. Plate 34, No. 19
- f. Plate 35, No. 1

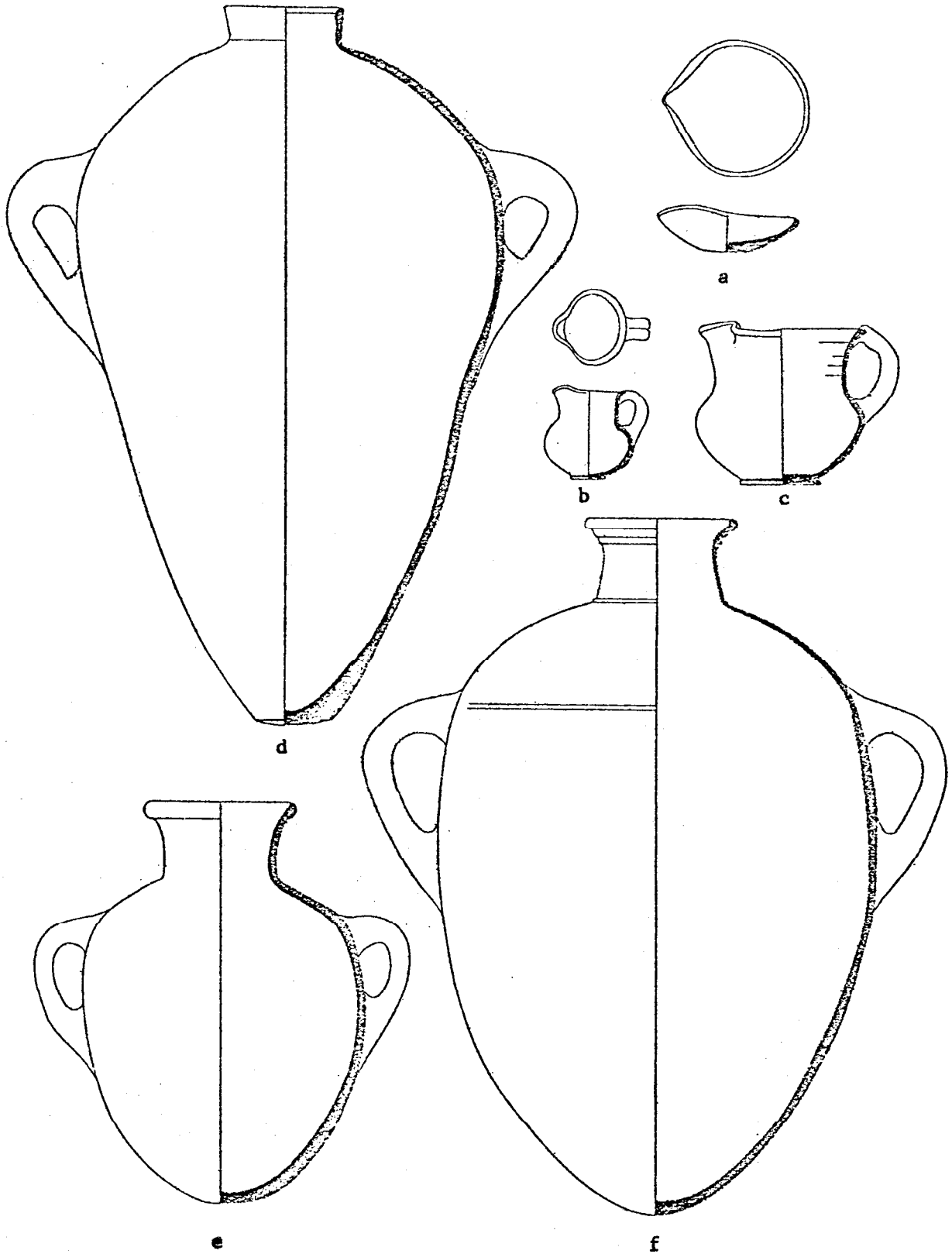
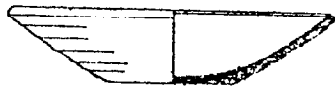


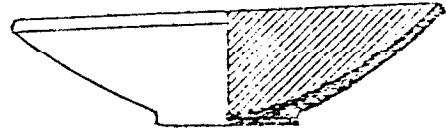
Fig. 340.--Megiddo: Pottery of the MB III B 2; Group D

Loud, Megiddo II.

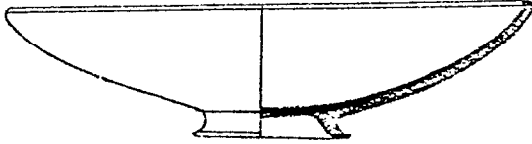
- a. Plate 29, No. 7
- b. Plate 29, No. 12
- c. Plate 37, No. 12
- d. Plate 29, No. 25
- e. Plate 29, No. 29
- f. Plate 29, No. 27
- g. Plate 28, No. 5
- h. Plate 28, No. 18
- i. Plate 44, No. 17
- j. Plate 36, No. 10
- k. Plate 29, No. 2
- l. Plate 29, No. 3
- m. Plate 29, No. 5
- n. Plate 30, No. 4
- o. Plate 46, No. 8



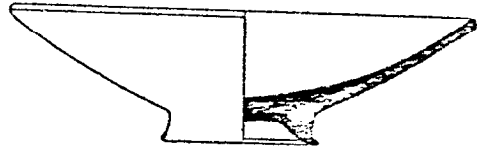
a



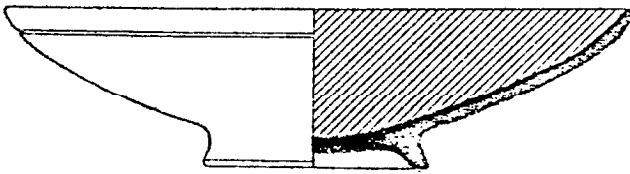
b



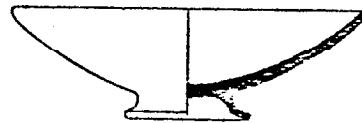
c



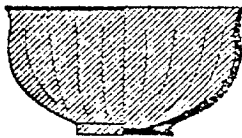
d



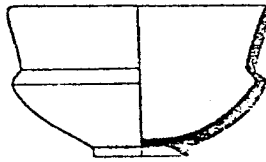
e



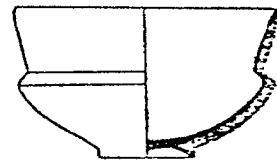
f



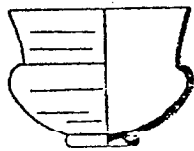
g



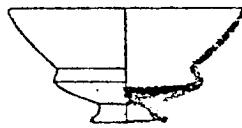
h



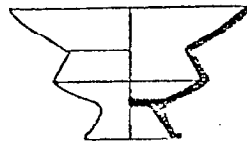
i



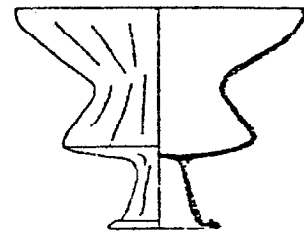
j



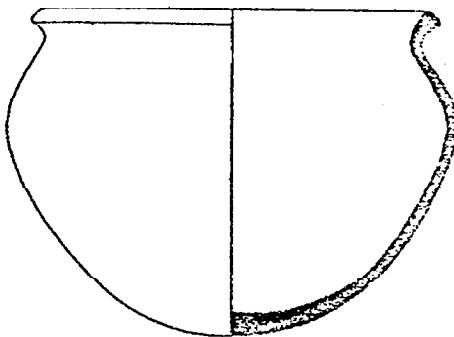
k



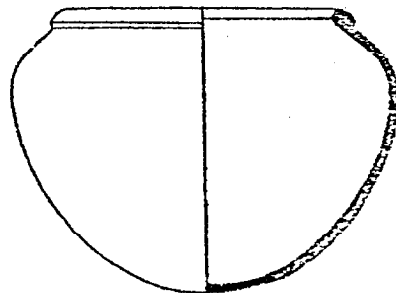
l



m



n



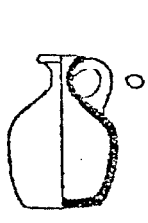
o

Fig. 341.--Megiddo: Pottery of the MB III B 2; Group D (Cont)

Loud, Megiddo II.

- a. Plate 40, No. 7
- b. Plate 23, No. 12
- c. Plate 23, No. 14
- d. Plate 23, No. 13
- e. Plate 23, No. 19
- f. Plate 32, No. 26
- g. Plate 32, No. 16
- h. Plate 23, No. 15
- i. Plate 41, No. 8
- j. Plate 33, No. 16
- k. Plate 25, No. 19
- l. Plate 25, No. 23
- m. Plate 25, No. 10
- n. Plate 23, No. 11
- o. Plate 32, No. 1
- p. Plate 32, No. 4

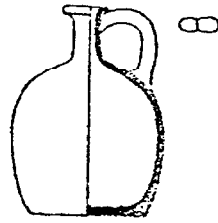




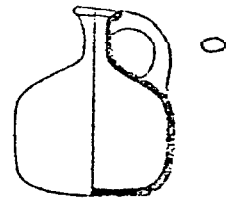
a



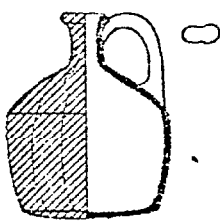
b



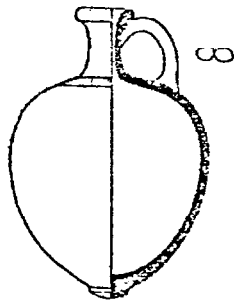
c



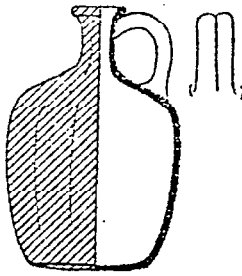
d



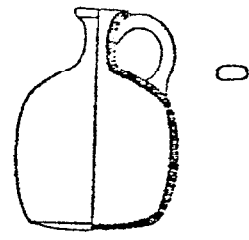
e



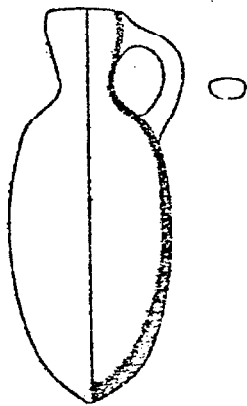
f



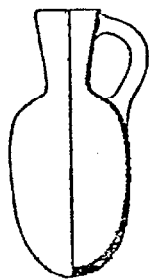
g



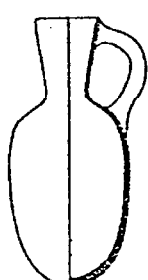
h



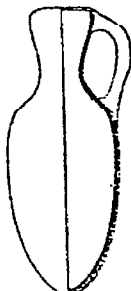
i



j



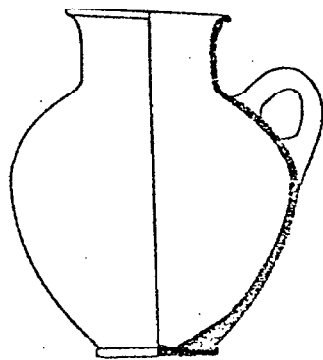
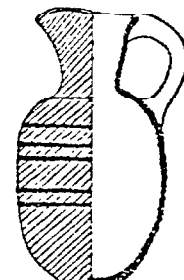
k



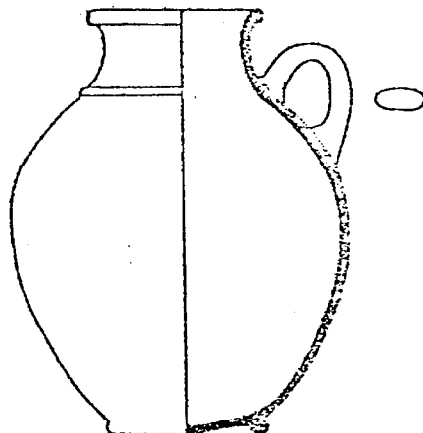
l



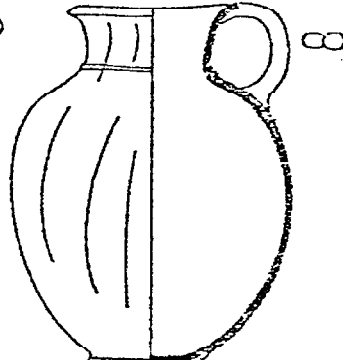
m



n



o



p

Fig. 342.--Megiddo: Pottery of the MB III B 2; Group D (Cont.)  
Loud, Megiddo II.

- a. Plate 30, No. 8
- b. Plate 47, No. 3
- c. Plate 38, No. 23
- d. Plate 27, No. 3
- e. Plate 42, No. 5
- f. Plate 27, No. 1

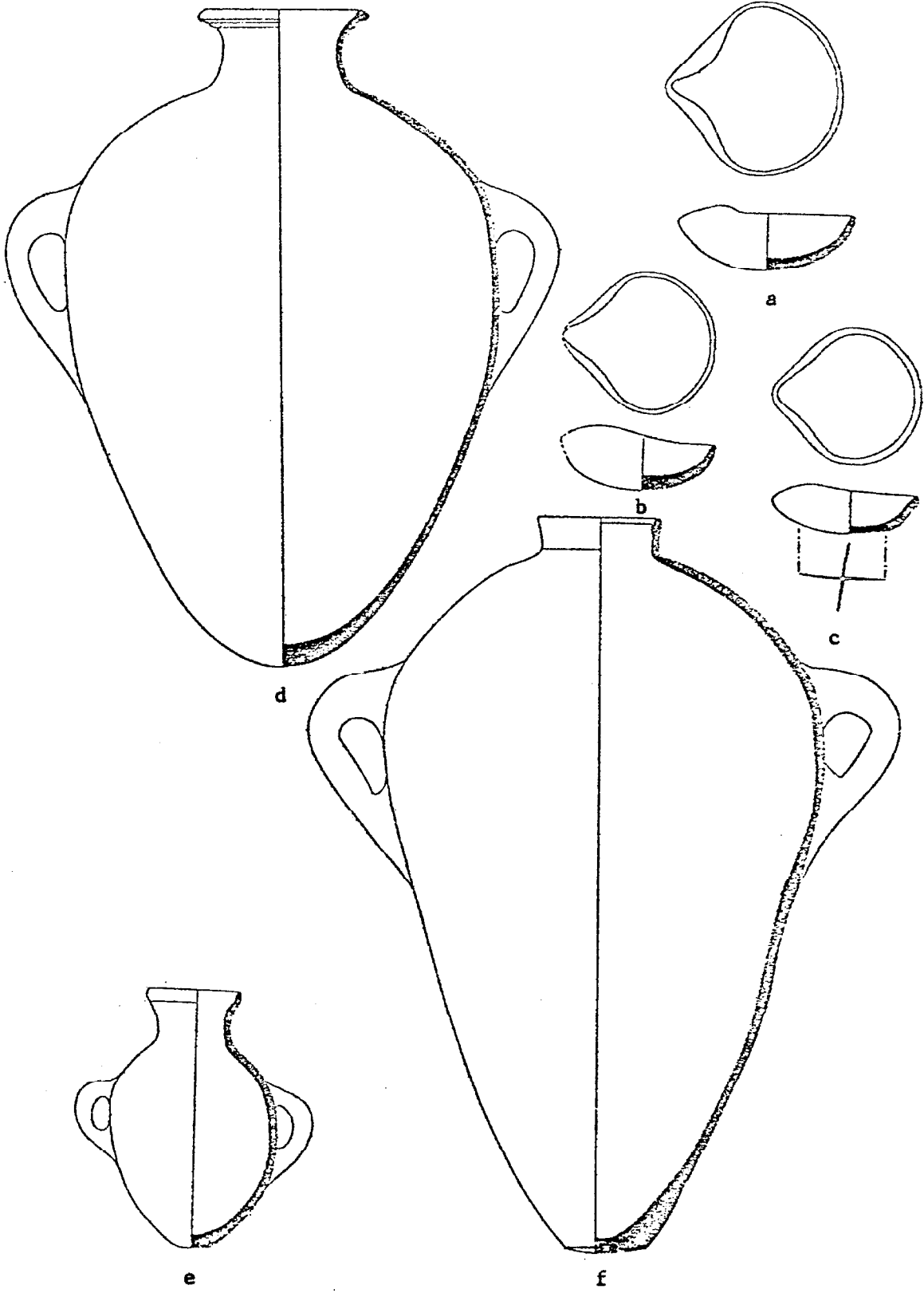


Fig. 343.--Megiddo: Pottery of the MB III C; Group E

Loud, Megiddo II.

- a. Plate 37, No. 23
- b. Plate 44, No. 37
- c. Plate 38, No. 8
- d. Plate 45, No. 11
- e. Plate 36, No. 7
- f. Plate 44, No. 13
- g. Plate 44, No. 18
- h. Plate 37, No. 1
- i. Plate 32, No. 7
- j. Plate 44, No. 27
- k. Plate 44, No. 9
- l. Plate 32, No. 11
- m. Plate 40, No. 13
- n. Plate 40, No. 9
- o. Plate 40, No. 8
- p. Plate 32, No. 5

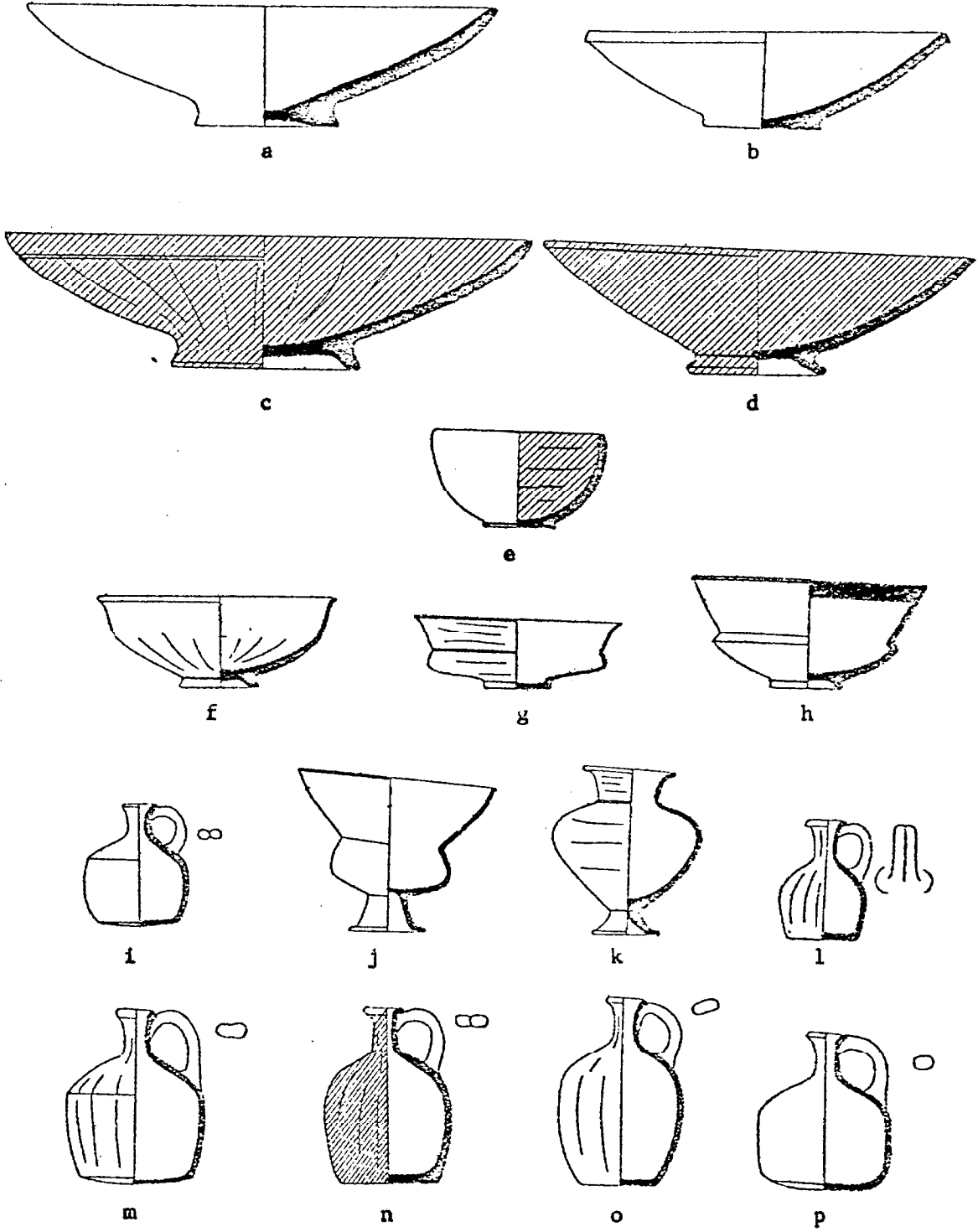
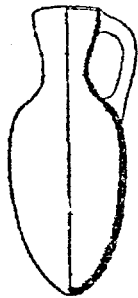


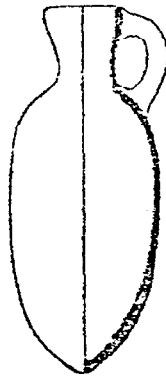
Fig. 344.--Megiddo: Pottery of the MB III C; Group E (Cont.)

Loud, Megiddo II.

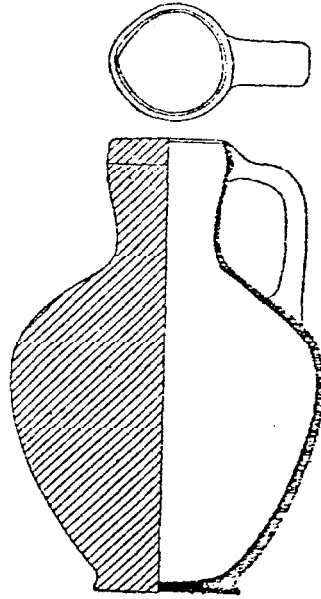
- a. Plate 41, No. 18
- b. Plate 41, No. 10
- c. Plate 39, No. 16
- d. Plate 33, No. 27
- e. Plate 34, No. 2
- f. Plate 34, No. 6
- g. Plate 39, No. 2
- h. Plate 29, No. 1



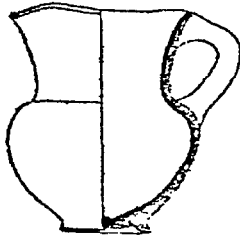
a



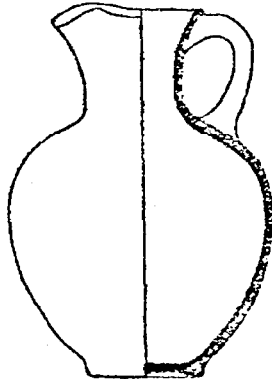
b



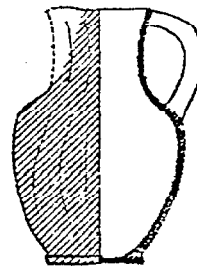
c



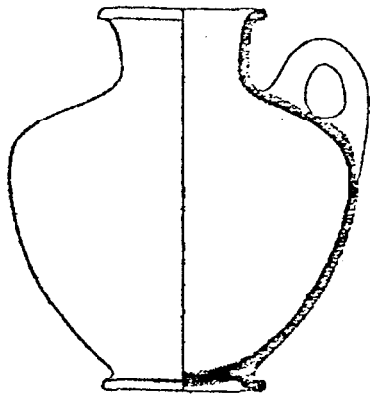
d



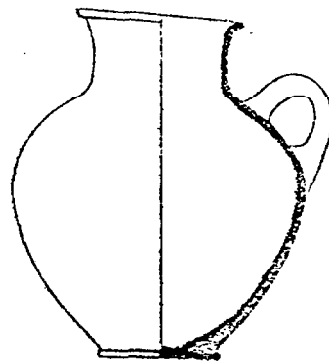
e



f



g



h

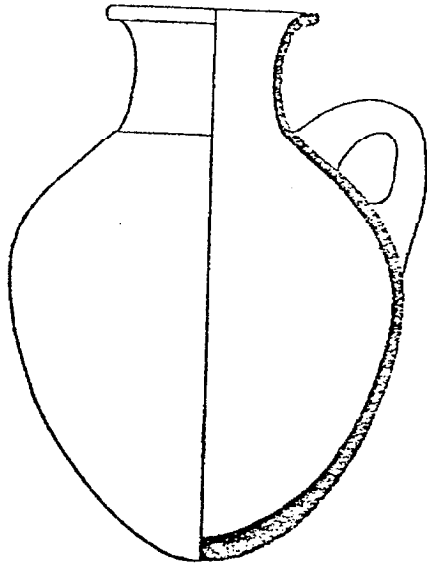
Fig. 345.--Megiddo: Pottery of the MB III C; Group E (Cont.)

Loud, Megiddo II.

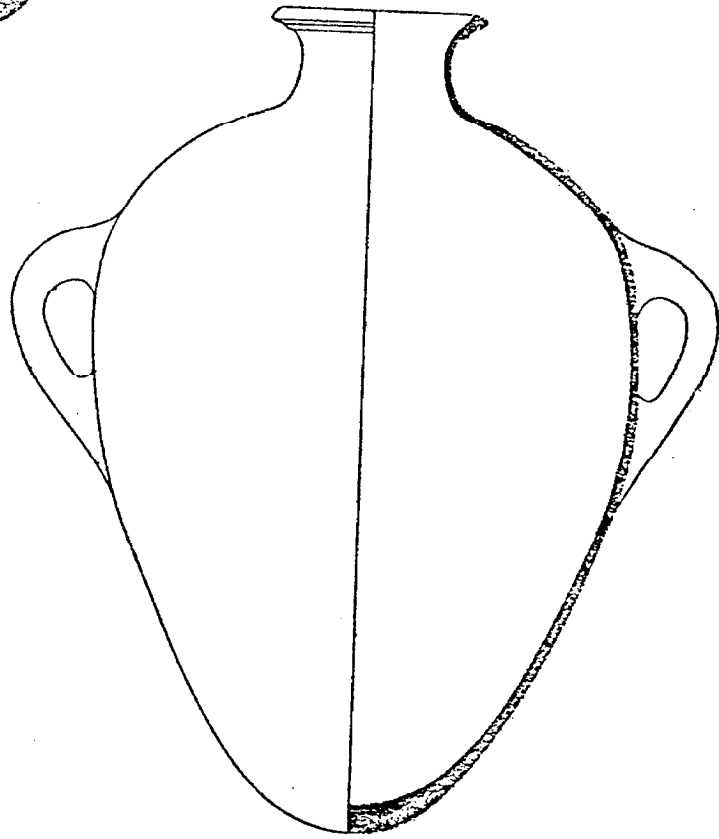
a. Plate 40, No. 6

b. Plate 35, No. 2





a

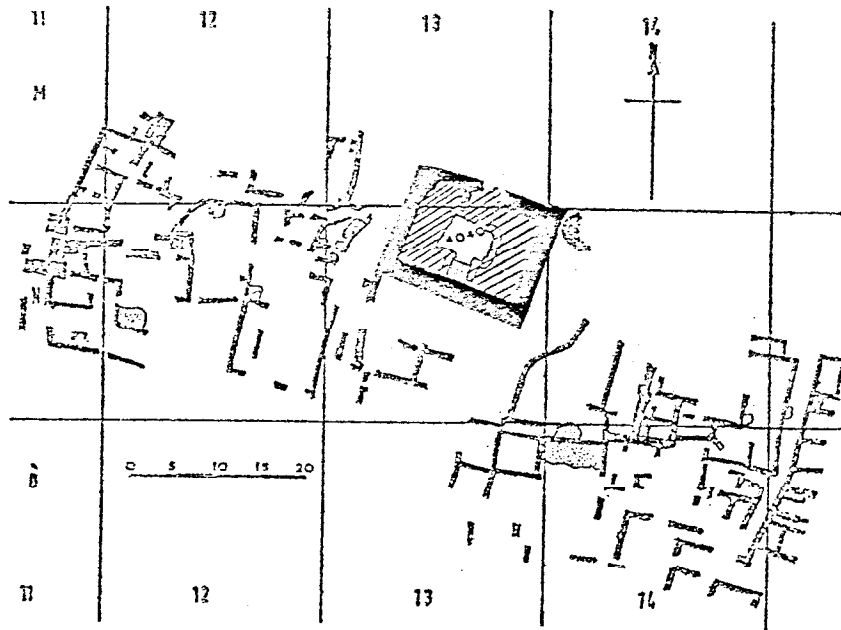


b

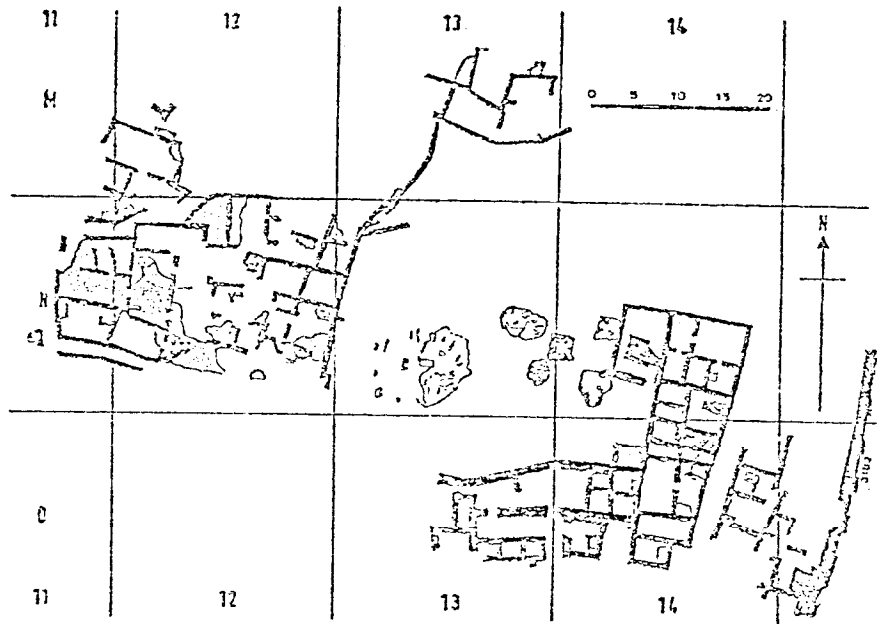
Fig. 346.--Megiddo: Architectural Phases of Area BB (After Kenyon)  
Kenyon, "Notes on the Middle and Late Bronze Age Strata at Megiddo".

a. Phase L      Fig. 18

b. Phase M      Fig. 19



a



b

Fig. 347.--Megiddo: Architectural Phases of Area BB (After Kenyon)  
(Cont.): Phase P

Kenyon, "Notes on the Middle and Late Bronze Age Strata of Megiddo",  
Fig. 20.

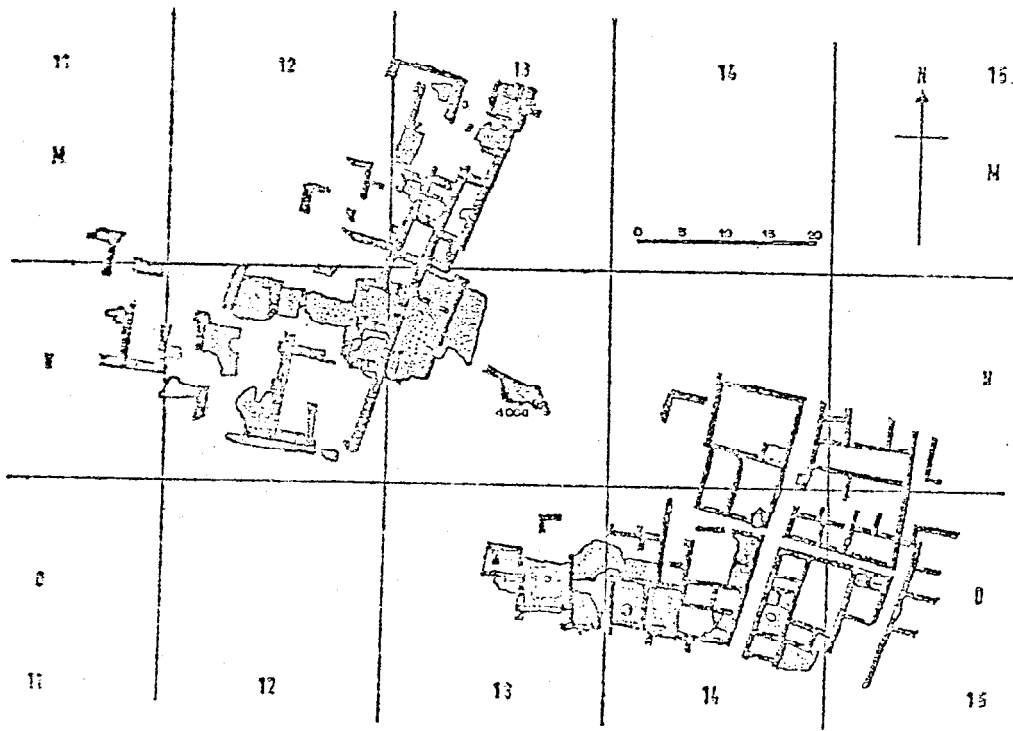


Fig. 348.--Megiddo: Architectural Phases of Area AA (After  
Kenyon)

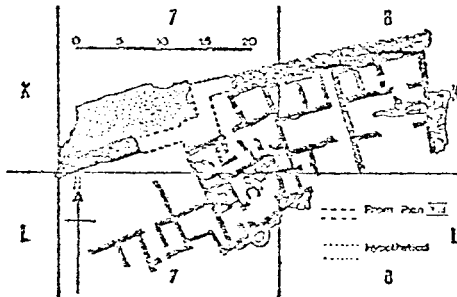
Kenyon, "Notes on the Middle and Late Bronze Age Strata of Megiddo".

a. Phase AB      Fig. 26

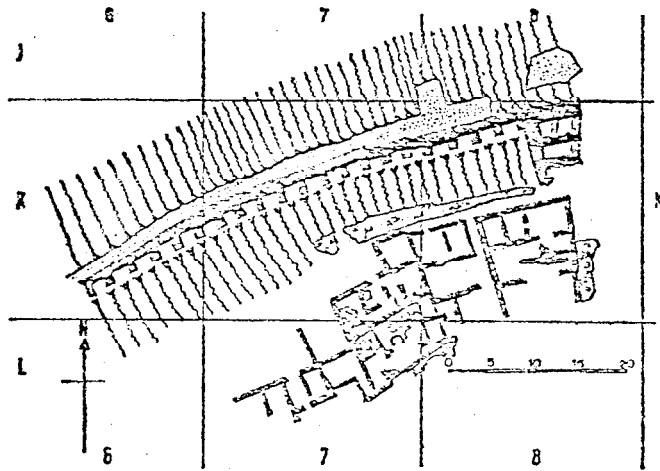
b. Phase AD      Fig. 27

c. Phase AF      Fig. 28

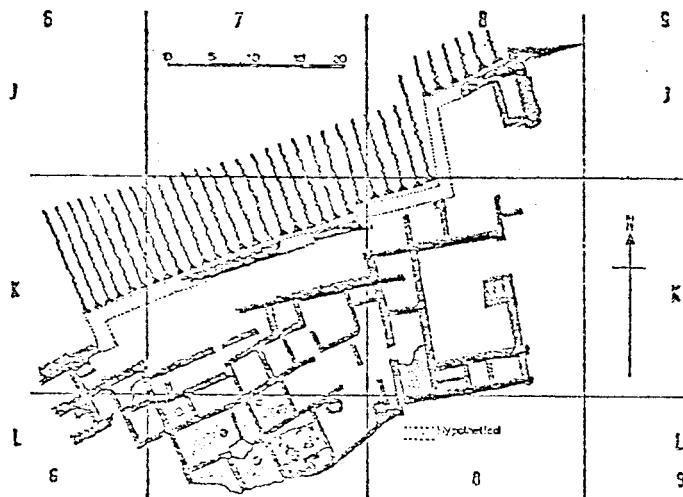
1492



a



b



c