

THE UNIVERSITY OF CHICAGO

ARCHAEOLOGY AND HISTORICAL PROBLEMS OF THE  
SECOND INTERMEDIATE PERIOD

VOLUME V

(Cont.)

A DISSERTATION SUBMITTED TO  
THE FACULTY OF THE DIVISION OF THE HUMANITIES  
IN CANDIDACY FOR THE DEGREE OF  
DOCTOR OF PHILOSOPHY

DEPARTMENT OF NEAR EASTERN LANGUAGES  
AND CIVILIZATIONS

BY

BRUCE WILLIAMS

CHICAGO, ILLINOIS

DECEMBER 1975

Fig. 349.--Hazor: Selected Objects from the High Mound, Area A  
Yadin et al., Hazor III-IV, Plate CLVI.

	<u>Locus</u>	<u>Stratum</u>	<u>No.</u>
a.	G14	XVIII	1
b.	G18	XVIII	2
c.	G14	XVIII	5
d.	J15	XVIII	6
e.	349b	XVII	18
f.	382c	XVII	19
g.	254f	XVII	20
h.	259f	XVII	21
i.	382c	XVII	26
j.	382c	XVII	29
k.	342c	XVI	31
l	270e	XVI	32

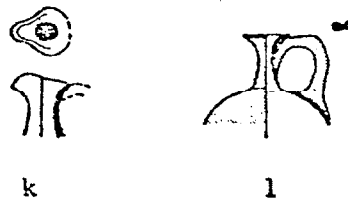
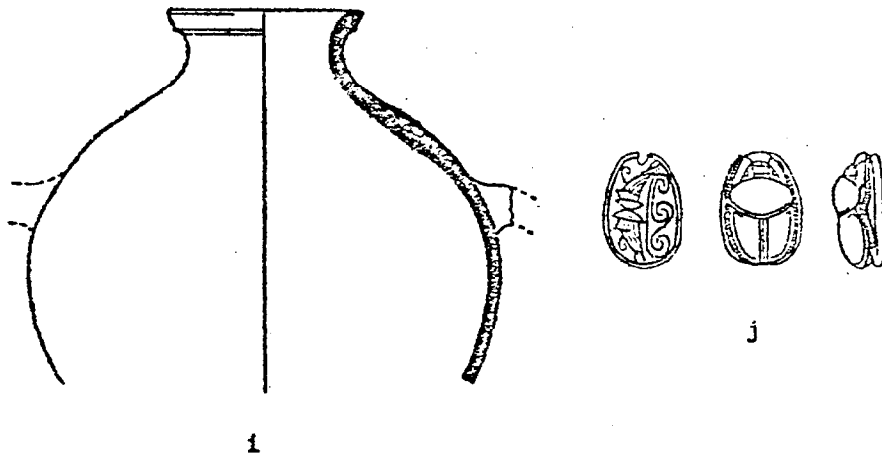
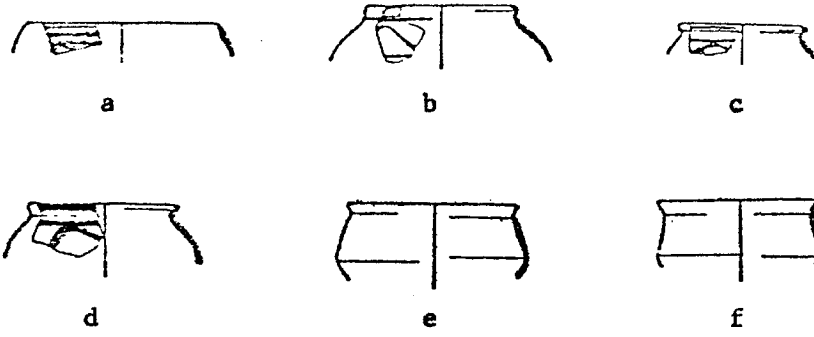


Fig. 350.--Hazor: Selected Pottery from the High Mound  
Yadin et al., Hazor III-IV.

Plate CCXXXV; Area BA, Locus 4024, Stratum 14:

- a. No. 21
- b. No. 22
- c. No. 23
- d. No. 24
- e. No. 26
- f. No. 28
- g. No. 30
- h. No. 31
- i. No. 34

Plate CXCVIII; Area B, Locus 3814, Burial:

- j. No. 1
- k. No. 3
- l. No. 4

Plate CXCVII; Area B, Locus 3277:

- m. No. 11
- n. No. 12
- o. No. 15

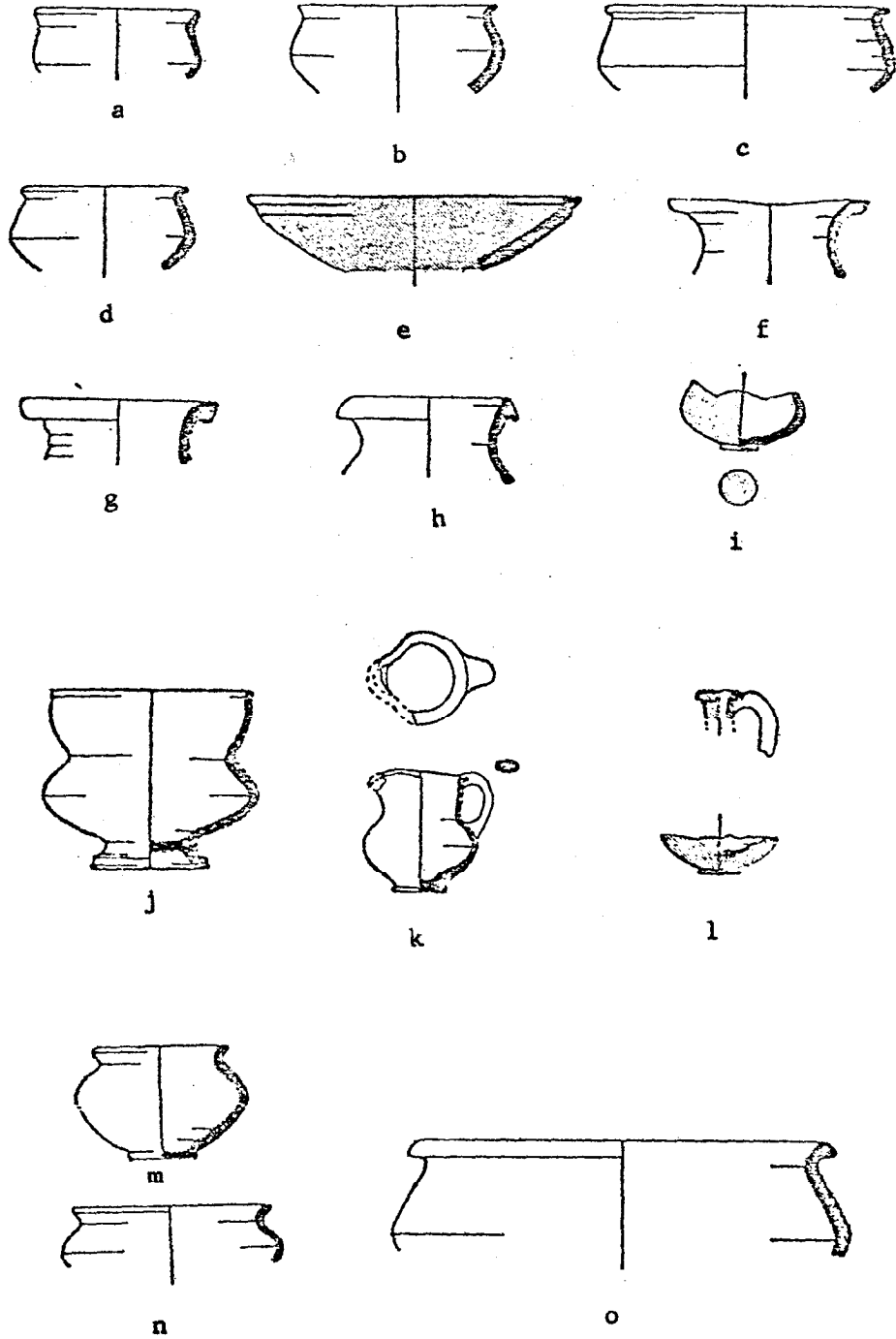


Fig. 351.--Hazor: Objects from the High Mound, Area BA

Yadin et al., Hazor III-IV, Plate CCXXXVI.

	<u>Locus</u>	<u>Stratum</u>	<u>Burial</u>	<u>No.</u>
a.	4022	13		1
b.	4022	13		2
c.	4023	13		5
d.	4022	13		3
e.	4022	13		4
f.	4021	12	X	6
g.	4021	12	X	7
h.	4021	12	X	8
i.	4021	12	X	11
j.	4021	12	X	12
k.	4021	12	X	9
l.	4021	12	X	10
m.	4021	12	X	11

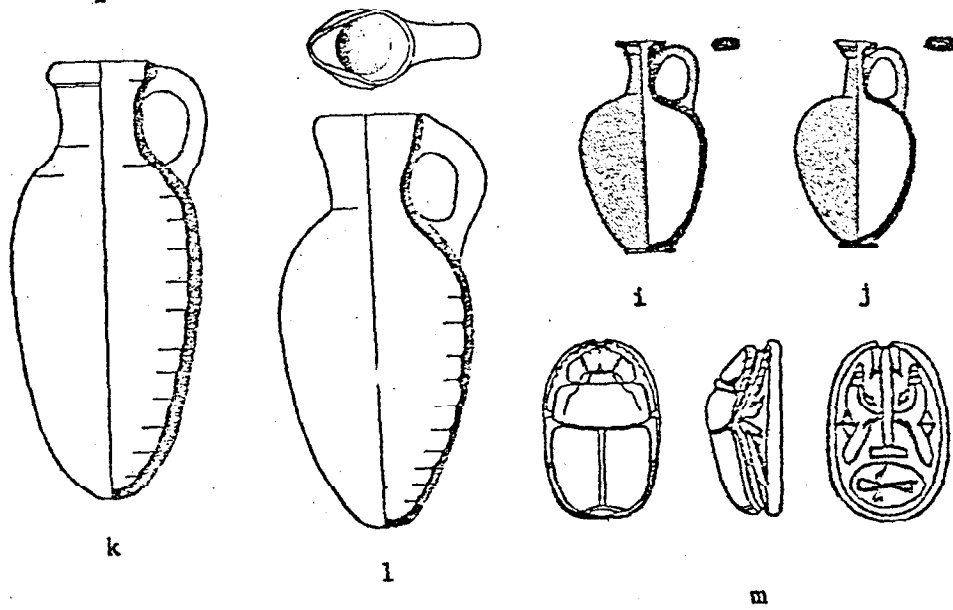
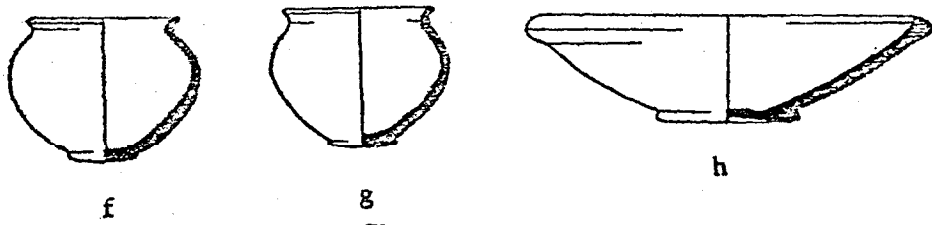
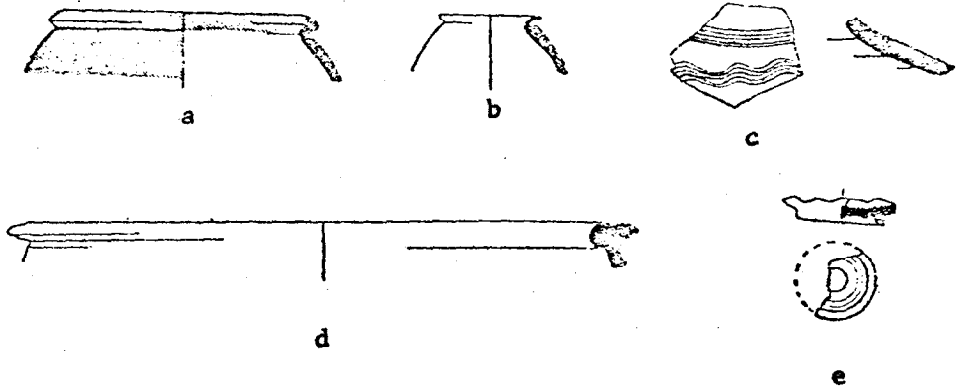


Fig. 352.--Hazor: Selected Pottery from Areas G and F

Yadin et al., Hazor III-IV.

Area C, from Plate CCXLVI:

a.	Locus 10051	Period MB I	No. 1
b.	Locus 10061	Period MB II	No. 2
c.	Locus 10012	Period MB II	No. 3
d.	Locus 10053f	Period MB II	No. 4
e.	Locus 10012	Period MB II	No. 5
f.	Locus 10012	Period MB II	No. 6
g.	Locus 10053f	Period MB II	No. 7
h.	Locus 10012	Period MB II	No. 8
i.	Locus 10012	Period MB II	No. 9
j.	Locus 10053f	Period MB II	No. 11
k.	Locus 10012	Period MB II	No. 14
l.	Locus 10012	Period MB II	No. 15
m.	Locus 10053f	Period MB II	No. 16

Area F, from Plate CCXXXIX:

n.	Locus 8189	Period MB II	No. 12
o.	Locus 8113	Period MB II	No. 14
p.	Locus P6	Period MB II	No. 15
q.	Locus 8210	Period MB II	No. 18
r.	Locus 8159	Period MB II	No. 19
s.	Locus P5	Period MB II	No. 20
t.	Locus L7	Period MB II	No. 21
u.	Locus 8130	Period MB II	No. 22



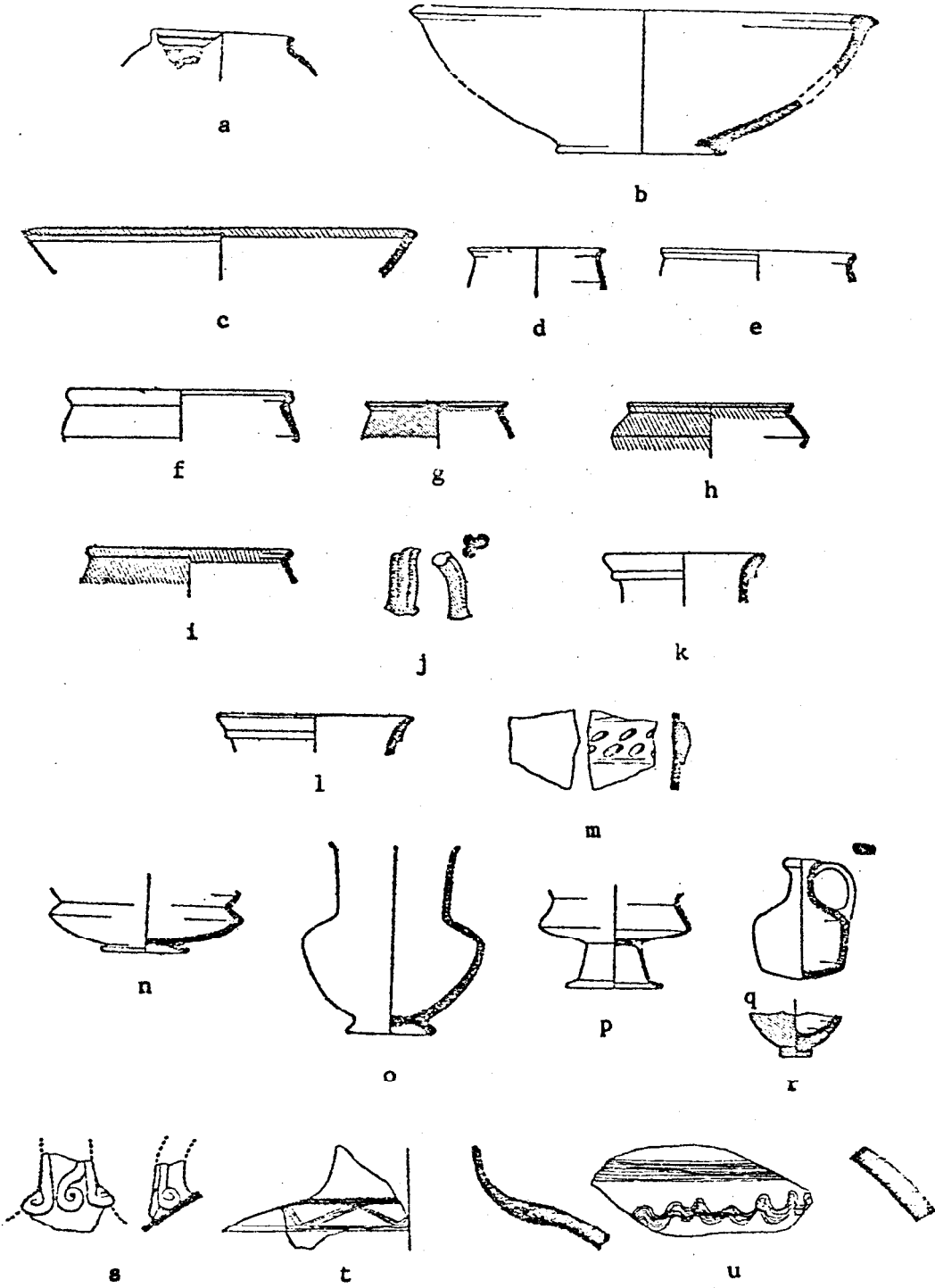


Fig. 353.--Hazor: Selected Pottery from D2 and D1

Yadin et al., Hazor I.

Plate XCVIII; from D2:

a.	Locus Q15		No. 3
b.	Locus Q16		No. 4
c.	Locus R15		No. 6
d.	Locus R15		No. 7
e.	Locus Q15		No. 9

Plate XCIII; from D1:

f.	Locus Q14	Stratum 5	No. 1
g.	Locus 9047	Stratum 5	No. 2
h.	Locus 9047	Stratum 5	No. 9
i.	Locus 9047	Stratum 5	No. 10
j.	Locus Q14	Stratum 5	No. 11
k.	Locus 9043	Stratum 5	No. 15
l.	Locus 9043	Stratum 5	No. 16
m.	Locus 9043	Stratum 5	No. 19
n.	Locus 9043	Stratum 5	No. 21
o.	Locus 9043	Stratum 5	No. 22
p.	Locus 9044	Stratum 5	No. 24

Plate XCIV; from D1:

q.	Locus 9038	Stratum 3	No. 3
r.	Locus 9044	Stratum 3	No. 4
s.	Locus 9038	Stratum 3	No. 5
t.	Locus 9043	Stratum 3	No. 9
u.	Locus 9044	Stratum 3	No. 15
v.	Locus 9038	Stratum 3	No. 16
w.	Locus 9038	Stratum 3	No. 17
x.	Locus 9038	Stratum 3	No. 19
y.	Locus 9038	Stratum 3	No. 20
z.	Locus 9037	Stratum 3	No. 21

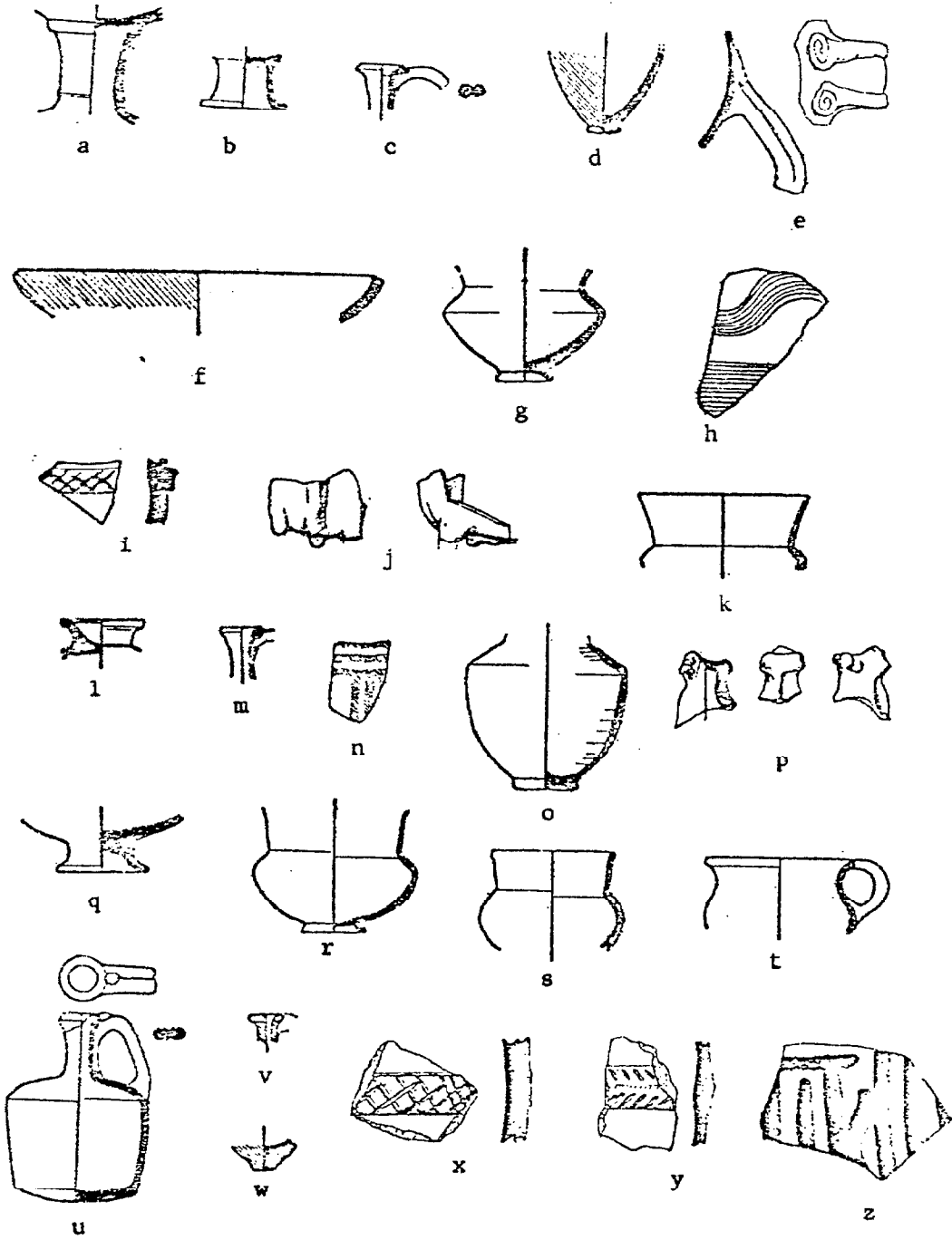


Fig. 354.--Hazor: Selected Pottery from Area D3

Yadin et. al., Hazor I, Plate CIII.

	<u>Locus</u>	<u>Stratum</u>	<u>No.</u>
a.	018	1	6
b.	018	1	7
c.	1	1	8
d.	P16	1	12
e.	P18	1	13
f.	9007	1	14
g.	9007	1	15
h.	9007	1	16
i.	018	1	19
j.	018	1	21
k.	018	1	22
l.	018	1	28
m.	9003	1	27

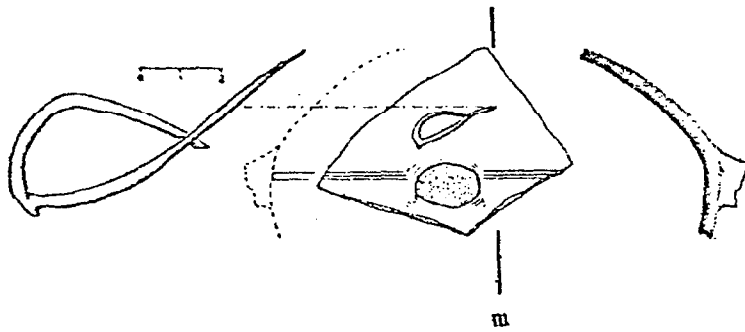
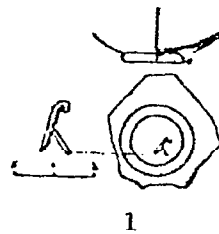
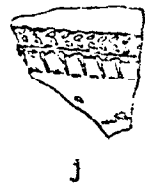
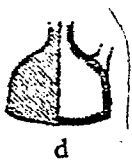
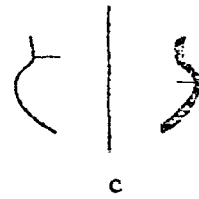
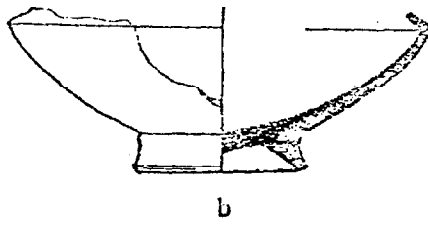
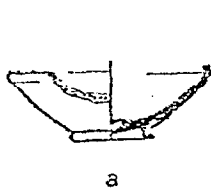


Fig. 355.--Hazor: Selected Pottery from Area D3 (Cont.)

Yadin et. al., Hazor I.

	<u>Locus</u>	<u>Stratum</u>	<u>Plate</u>	<u>No.</u>
a.	9039	2	CI	3
b.	9023	2	CI	4
c.	9039	2	CI	5
d.	9023	2	CI	10
e.	9015	2	CI	13
f.	017	2	CI	18
g.	9023	2	CI	19
h.	P17	2	CI	20
i.	9008	2	CI	21
j.	9008	2	CI	22
k.	9008	2	CI	23
l.	9008	2	CI	25
m.	9027	2	CII	7
n.	9028	2	CI	24
o.	9008	2	CI	26
p.	9008	2	CII	8
q.	9039	2	CII	9
r.	9008	2	CII	10
s.	9823	2	CII	11
t.	9023	2	CII	12
u.	9023	2	CII	13
v.	9039	2	CII	14
w.	9015	2	CII	15

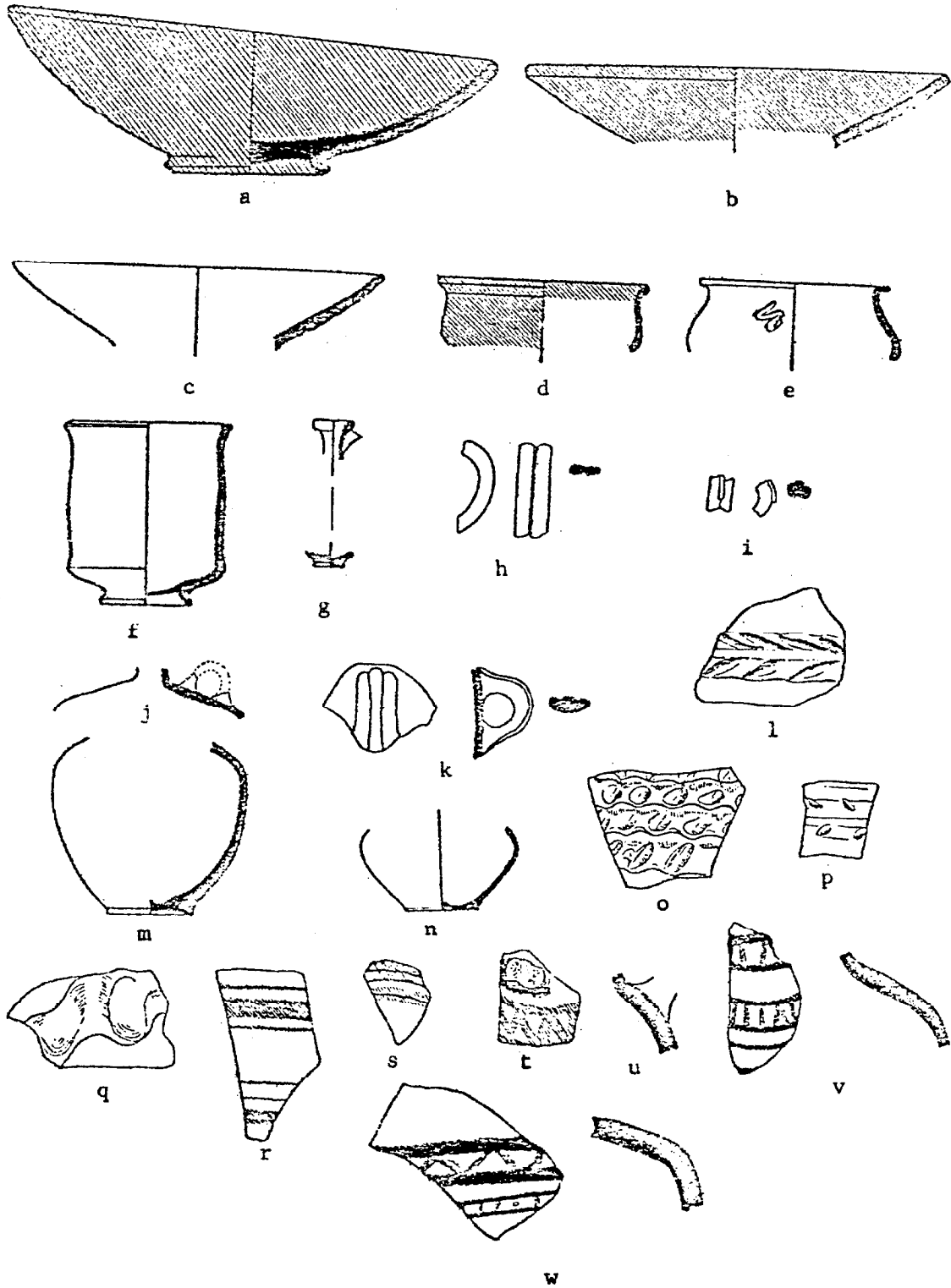


Fig. 356.--Hazor: Selected Pottery from Area D3 (Cont.)

Yadin et. al., Hazor I, Plate C.

	<u>Locus</u>	<u>Stratum</u>	<u>No.</u>
a.	9010	4	2
b.	9010	4	9
c.	9010	4	10
d.	9010	4	12
e.	9010	4	13
f.	9010	4	14
g.	9010	3	19
h.	9011	4	3
i.	9011	4	6
j.	9011	4	7
k.	9011	4	11
l.	9011	4	8
m.	9039	3	18
n.	9039	3	20
o.	9039	3	21
p.	9039	3	22
q.	9039	3	25
r.	9039	3	26
s.	9009	3	27



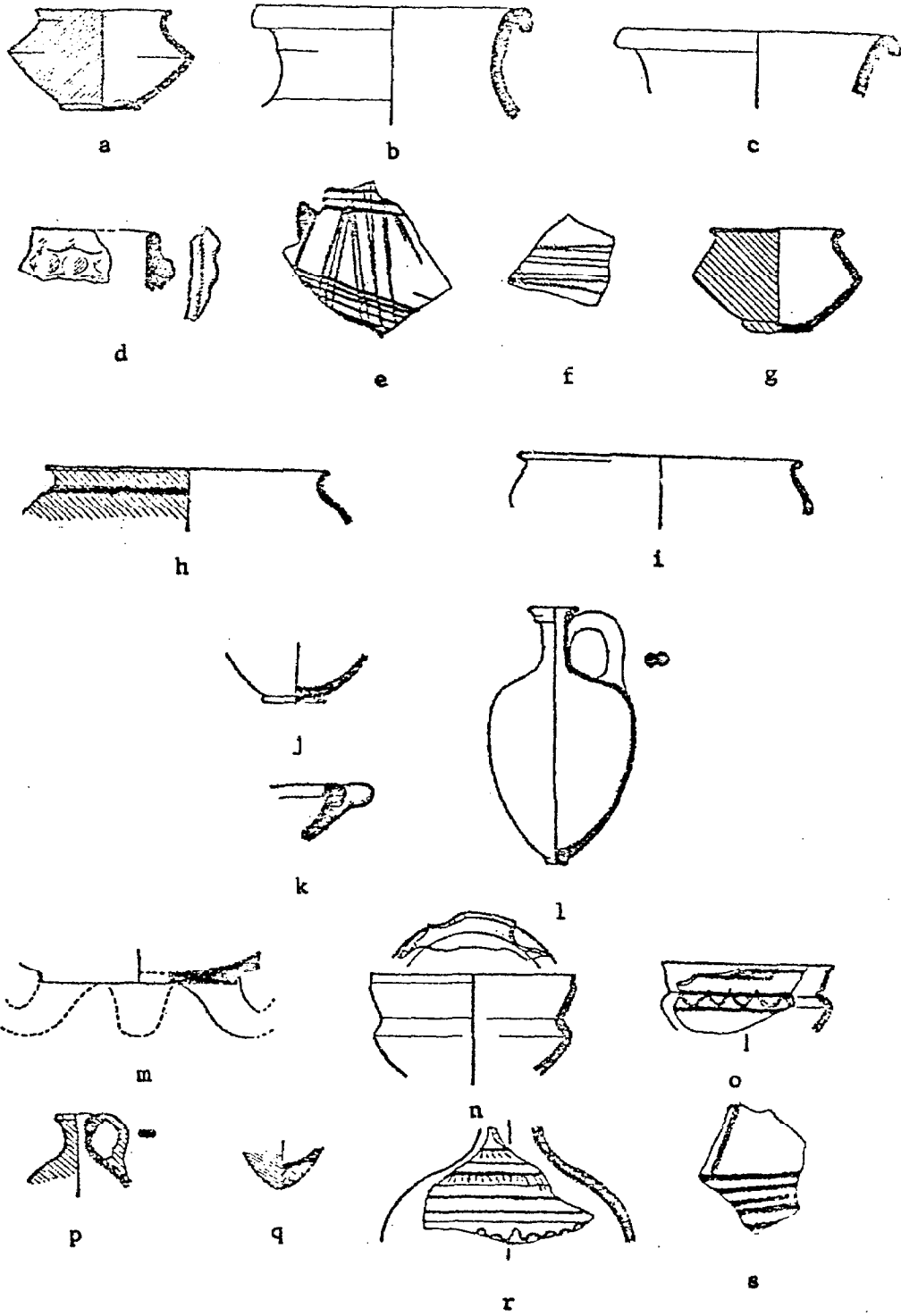


Fig. 357.--Hazor: Selected Pottery from Areas E and D5-4

Yadin et. al., Hazor I.

	<u>Area</u>	<u>Locus</u>	<u>Stratum</u>	<u>Plate</u>	<u>No.</u>	<u>With</u>
a.	E2	7001		CXXXII	1	Red Slip
b.	E3	7001		CXXXII	2	
c.	E258	7012		CXXXII	4	Red-Brown Slip
d.	E376	7012		CXXXII	5	Brick Red Slip
e.	E1	7001		CXXXII	3	Vertical Burnish
f.	E4	7001		CXXXII	7	
g.	D5	9024	4	CXXI	1	
h.	D5	9024	4	CXXI	2	
i.	D5	9024	4	CXXI	3	
j.	D5	9024	4	CXXI	4	
k.	D5	9024	4	CXXI	5	
l.	D5	9024	4	CXXI	6	
m.	D5	9024	4	CXXI	7	
n.	D5	9024	4	CXXI	8	
o.	D5	9024	4	CXXI	9	

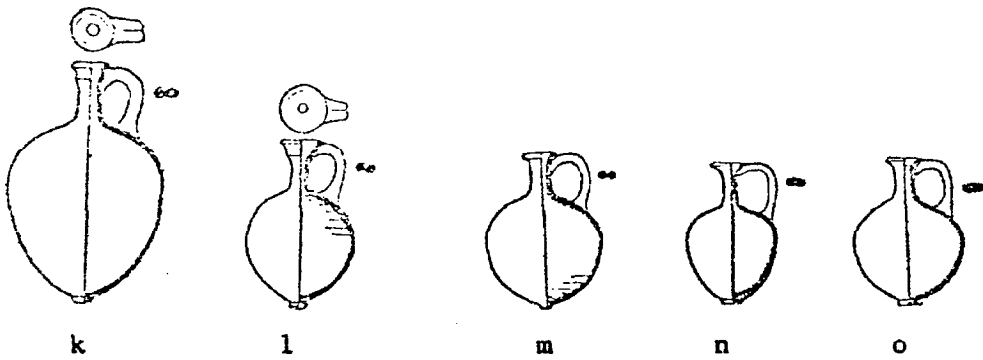
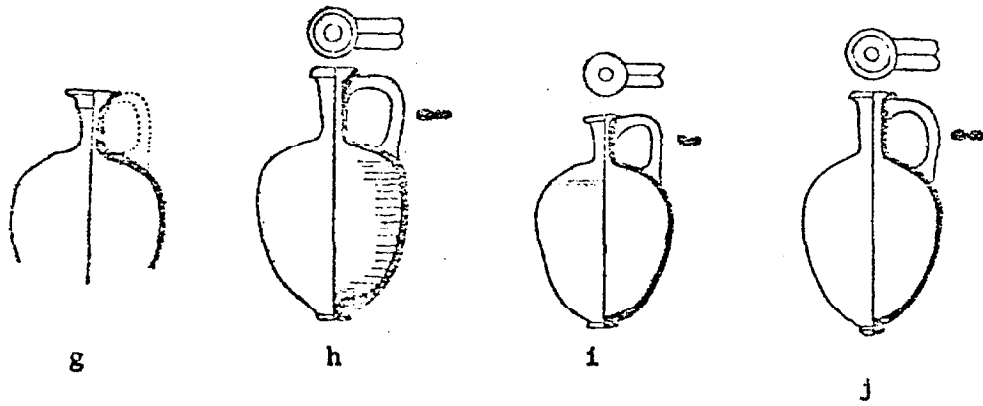
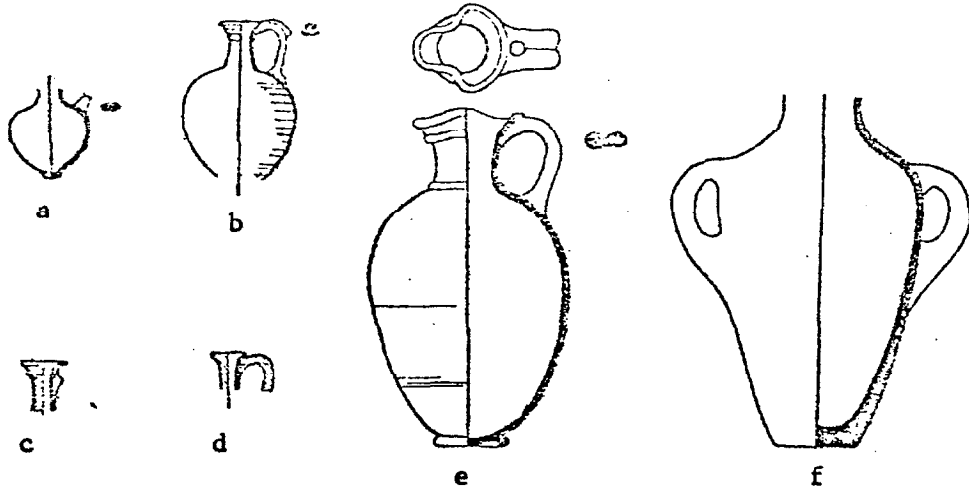


Fig. 358.--Hazor: Selected Pottery from Area D5, Locus 9024,  
Stratum 4

Yadin et. al., Hazor I, Plate CXXI.

a. No. 10

b. No. 11

c. No. 12

d. No. 13

e. No. 14

f. No. 15

g. No. 16

h. No. 17

i. No. 18

j. No. 19

k. No. 20

l. No. 21

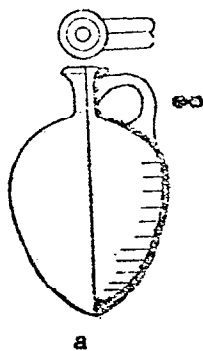
m. No. 22

n. No. 23

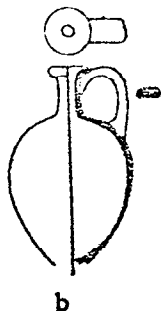
o. No. 24

p. No. 25

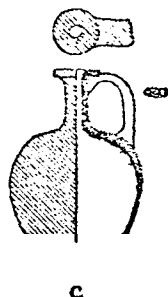
q. No. 26



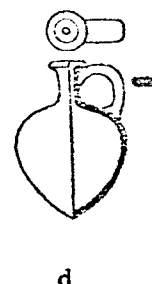
a



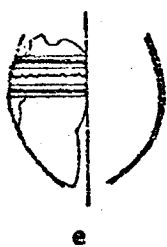
b



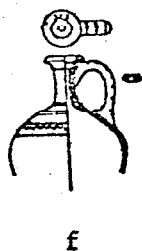
c



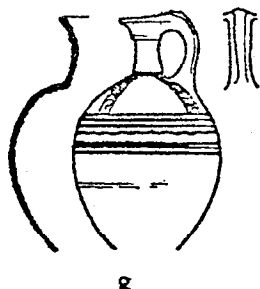
d



e



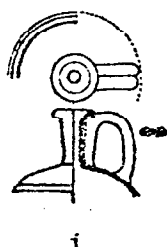
f



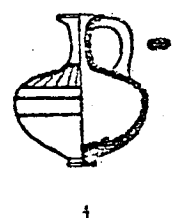
g



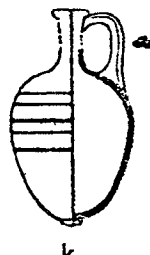
h



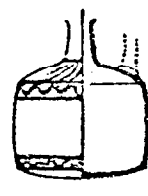
i



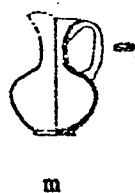
j



k



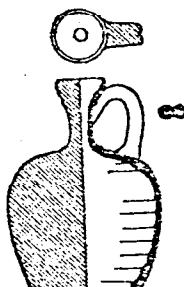
l



m



n



o



p

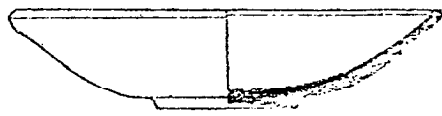


q

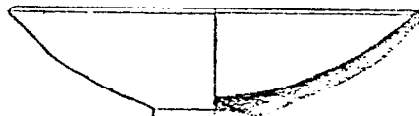
Fig. 359.--Hazor: Selected Pottery from Area D5, Locus 9024,  
Stratum 4 (Cont.)

Yadin et. al., Hazor I, Plate CXIX.

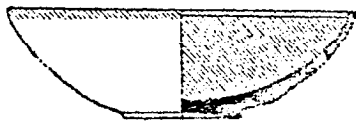
- a. No. 1
- b. No. 25
- c. No. 9
- d. No. 11
- e. No. 13
- f. No. 14
- g. No. 15
- h. No. 16
- i. No. 18
- j. No. 19
- k. No. 21
- l. No. 22
- m. No. 23
- n. No. 26



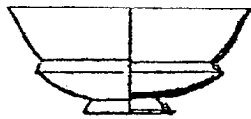
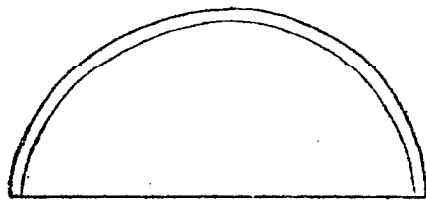
a



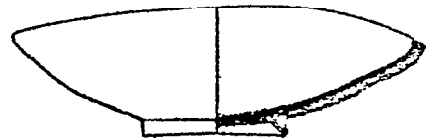
b



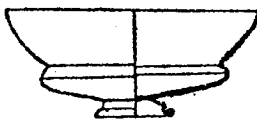
c



d



e



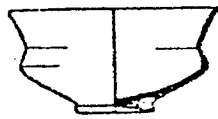
f



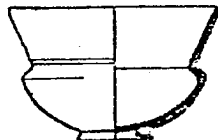
g



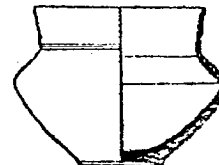
h



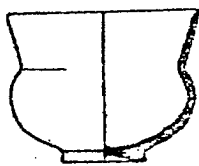
i



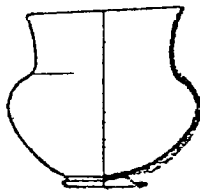
j



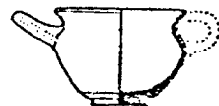
k



l



m



n

Fig. 360.--Hazor: Selected Pottery from Area D5, Locus 9024  
Stratum 4 (Cont.)

Yadin et. al., Hazor I, Plate CXX.

- a. No. 1
- b. No. 2
- c. No. 4
- d. No. 5
- e. No. 8
- f. No. 9
- g. No. 10
- h. No. 11



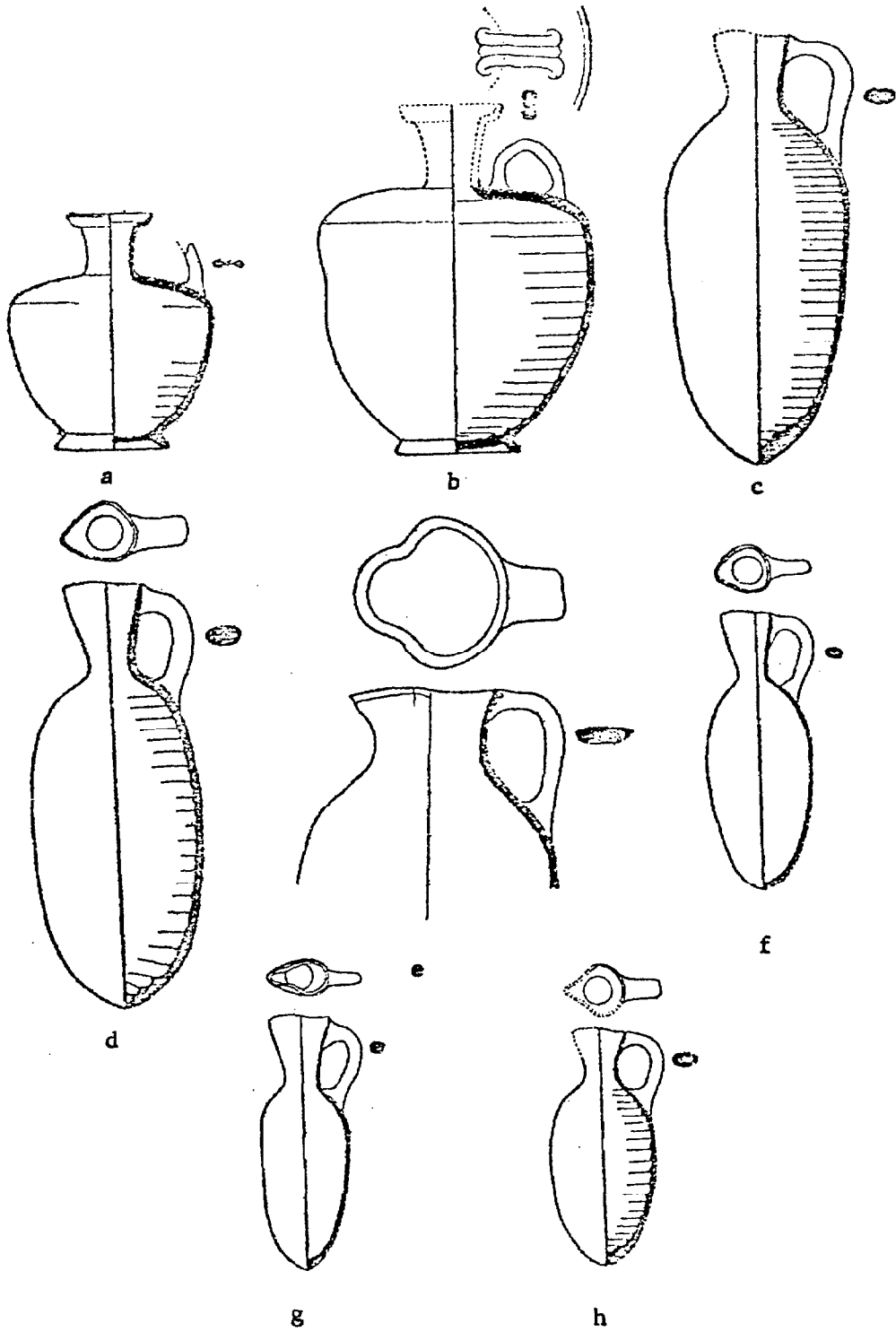
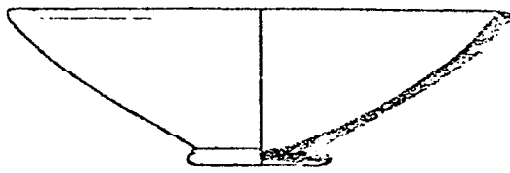


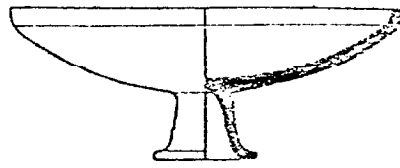
Fig. 361.--Hazor: Selected Pottery from Area D5, Locus 9024,  
Stratum 4 and 5

Yadin et al., Hazor I, Plate CXIV.

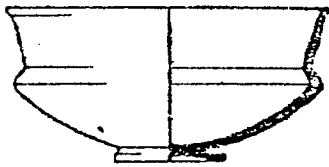
- |    |                          |        |
|----|--------------------------|--------|
| a. | Stratum 5                | No. 1  |
| b. | Stratum 5-4 (Probably 4) | No. 6  |
| c. | Stratum 5-4 (Probably 4) | No. 10 |
| d. | Stratum 5-4 (Probably 4) | No. 11 |
| e. | Stratum 5-4 (Probably 4) | No. 12 |
| f. | Stratum 5-4 (Probably 4) | No. 13 |
| g. | Stratum 5-4 (Probably 4) | No. 17 |
| h. | Stratum 5-4 (Probably 4) | No. 18 |



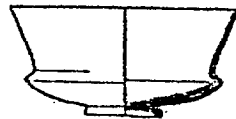
a



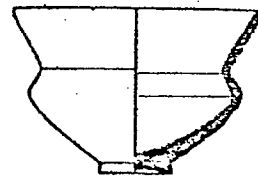
b



c



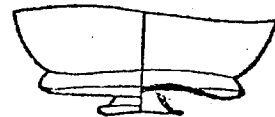
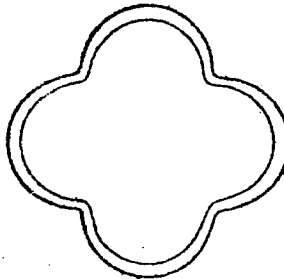
d



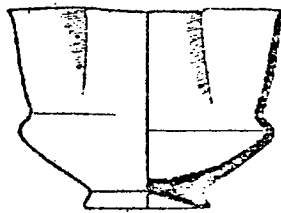
e



f



g

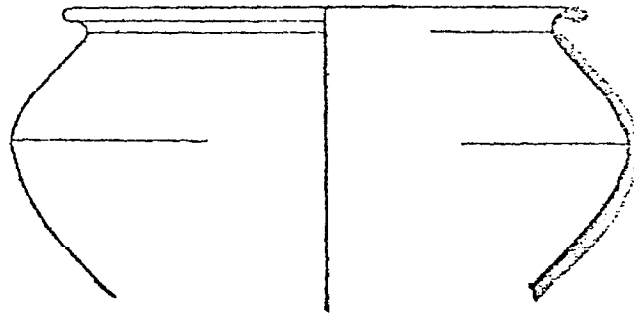


h

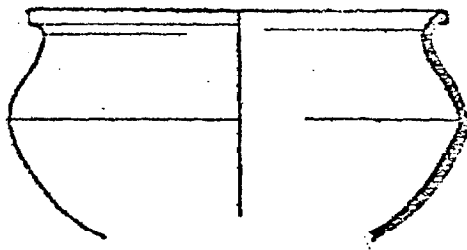
Fig. 362.--Hazor: Selected Pottery from Area D5, Locus 9024,  
Stratum 5

Yadin et. al., Hazor I.

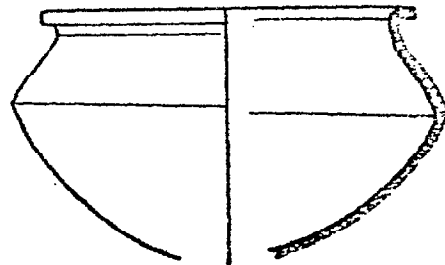
	<u>Plate No.</u>	<u>No.</u>
a.	CXVI	3
b.	CXVI	4
c.	CXVI	12
d.	CXVI	13
e.	CXVI	14
f.	CXV	3



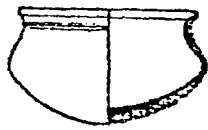
a



b



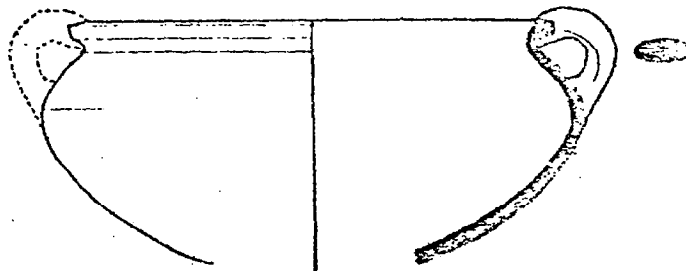
c



d



e



f

Fig. 363.--Hazor: Selected Pottery from Area C  
Yadin et. al., Hazor II, Plate CIX.

	<u>Locus</u>	<u>Stratum</u>	<u>No.</u>
a.	6205	3	3
b.	6200	3	5
c.	6199	3	9
d.	6200	3	11
e.	6202 T21	3	12
f.	6199	3	13
g.	6210 T22	3	17
h.	6203	3	19
i.	6206	3	25
j.	6298	3	26
k.	6203	3	27
l.	6207	3	32
m.	6212	3	33
n.	6207	3	34
o.	6200	3	35
p.	6203	3	44

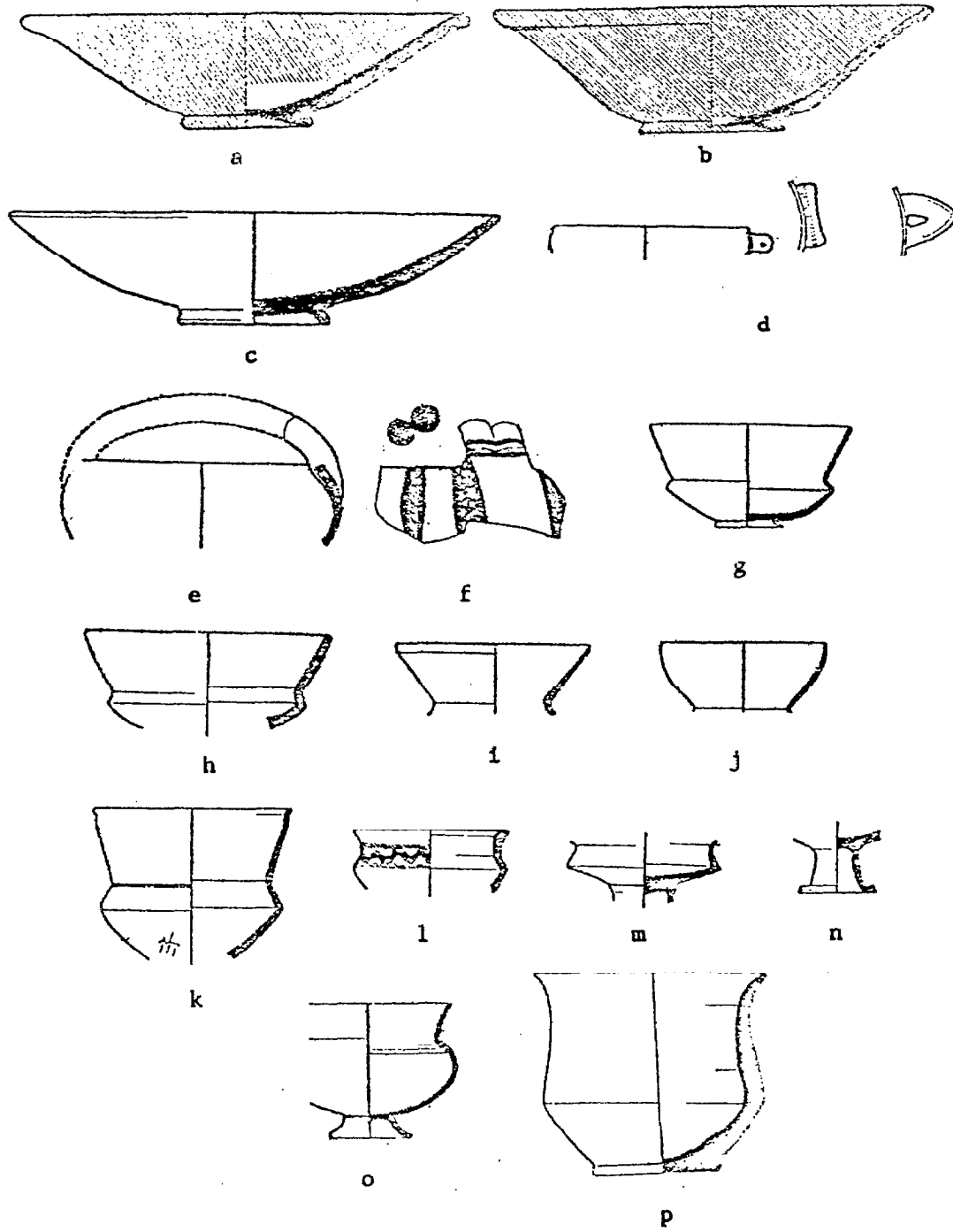
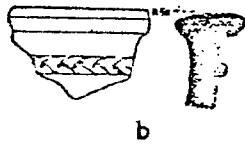
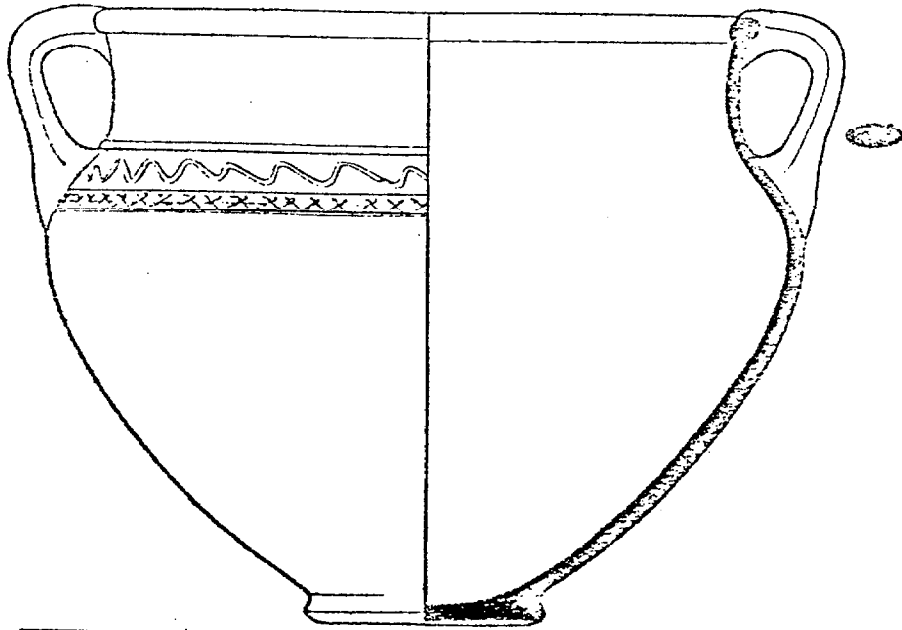


Fig. 364.--Hazor: Selected Pottery from Area C (Cont.)

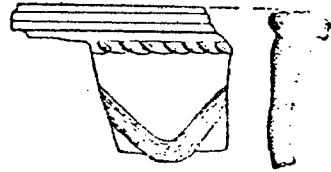
Yadin et. al., Hazor II, Plate CX.

	<u>Locus</u>	<u>Stratum</u>	<u>No.</u>
a.	6192	3	2
b.	6212	3	5
c.	6210	3	6
d.	6199	3	7
e.	6210	3	8
f.	6191	3	12
g.	6205	3	13
h.	6192	3	20

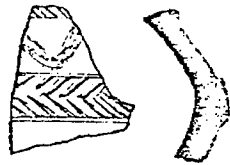




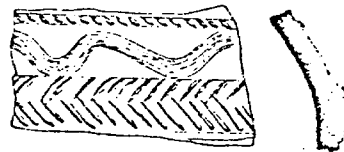
b



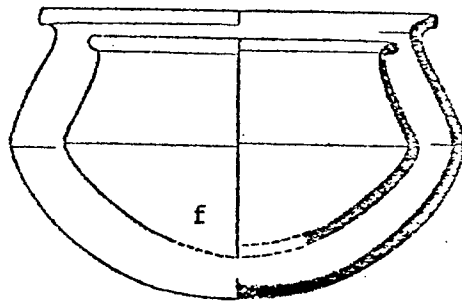
c



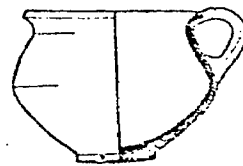
d



e



f



h

g

Fig. 365.--Hazor: Selected Pottery from Area C (Cont.)

Yadin et. al., Hazor II, Plate CXI.

	<u>Locus</u>	<u>Stratum</u>	<u>No.</u>
a.	6210 (T29)	3	11
b.	6205 T7	3	25
c.	6207 T10	3	2
d.	6200 T19	3	3
e.	6192 (Near T31 )	3	4
f.	6199 T8	3	5
g.	6207	3	7
h.	6205	3	8
i.	6205	3	9
j.	6205	3	10
k.	6192 T26	3	12
l.	6192 T25	3	13
m.	6199 T4	3	14
n.	6201 T18	3	15
o.	6208 T12	3	16
p.	6205	3	17
q.	6192 T30	3	18
r.	6103 T2	3	19



Fig. 366.--Hazor: Selected Pottery from Area C (Cont.)

Yadin et. al., Hazor II, Plate CXI.

	<u>Locus</u>	<u>Stratum</u>	<u>No.</u>
a.	6205	3	20
b.	6192 T30	3	21
c.	6103 T2	3	22
d.	6200 T19	3	23
e.	6200 T18	3	24
f.	6200 T19	3	26

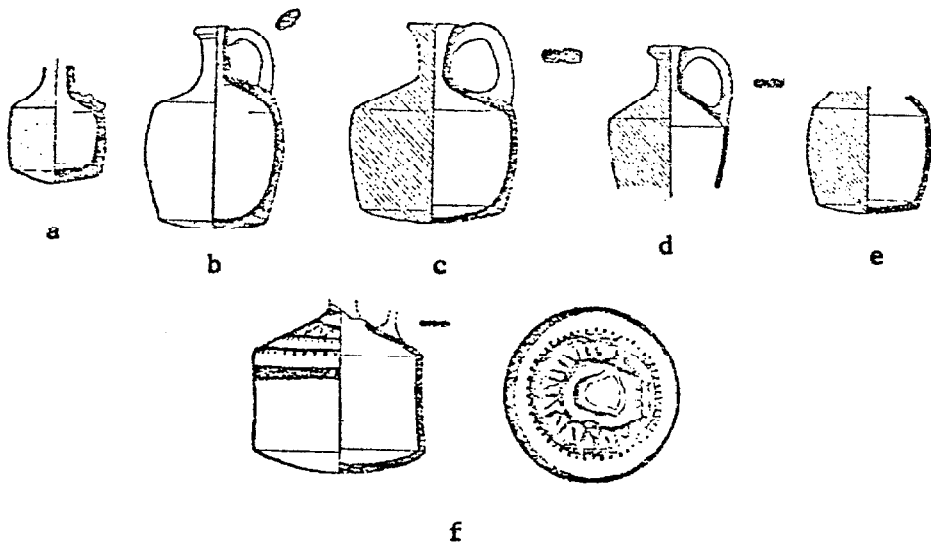
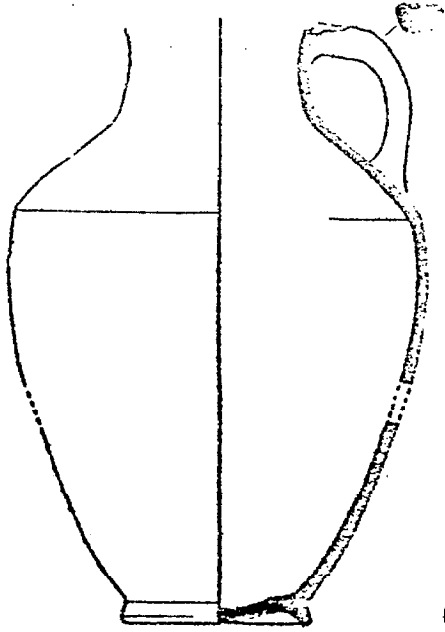


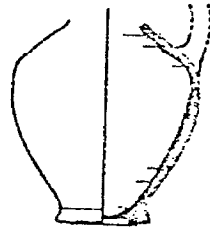
Fig. 367.--Hazor: Selected Pottery from Area C (Cont.)

Yadin et. al., Hazor II, Plate CXII.

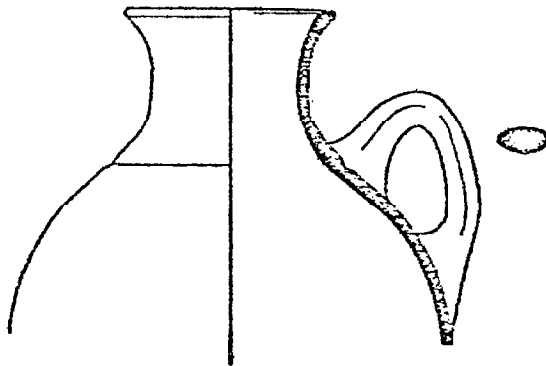
	<u>Locus</u>	<u>Stratum</u>	<u>No.</u>
a.	6203	3	2
b.	6191	3	4
c.	6203	3	7
d.	6103	3	8
e.	6175	3	9



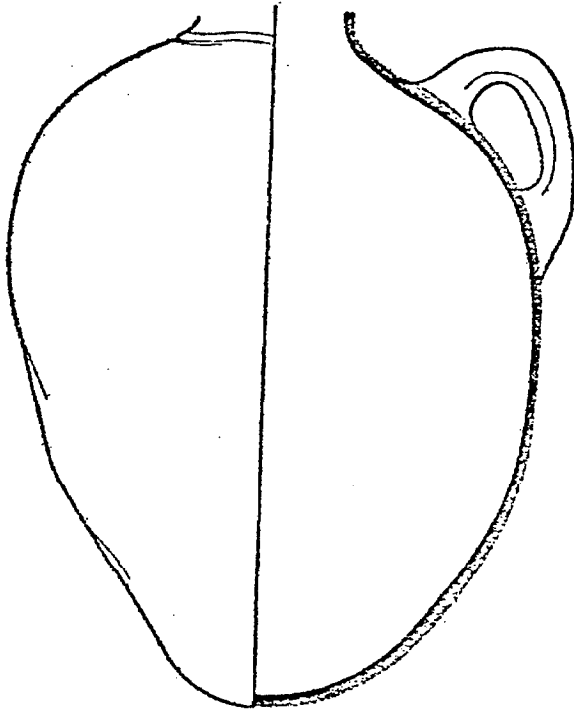
b



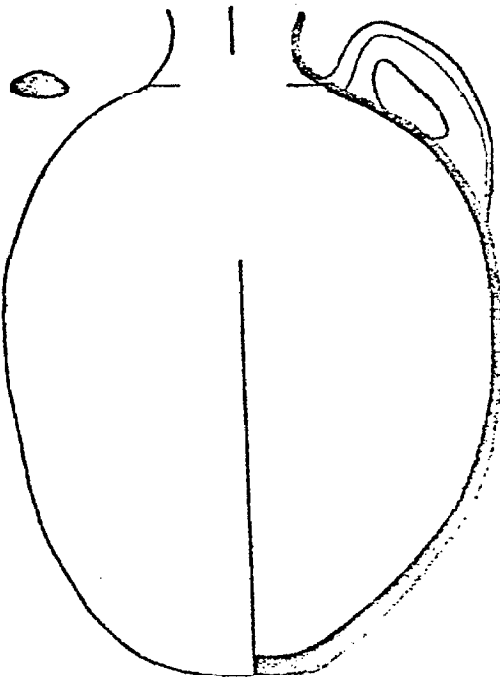
a



c



d



e

Fig. 368.--Hazor: Selected Pottery from Area C (Cont.)

Yadin et. al., Hazor II, Plate CXIII.

	<u>Locus</u>	<u>Stratum</u>	<u>No.</u>
a.	6205	3	1
b.	6203 (T1)	3	2
c.	6205	3	5
d.	6205	3	6
c.	6208	3	8
f.	6191	3	9



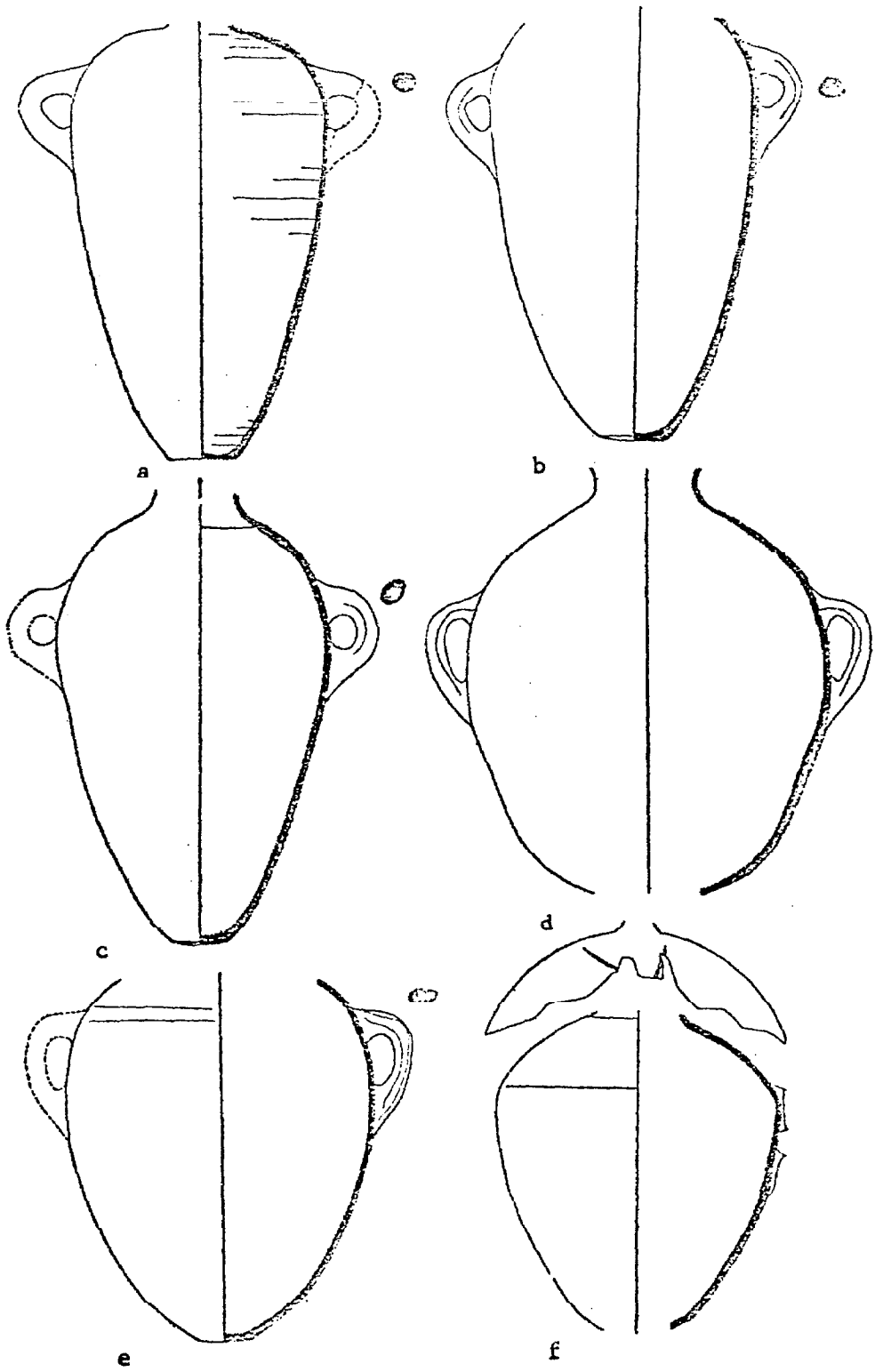


Fig. 369.--Hazor: Selected Pottery from Area C (Cont.)

Yadin et. al., Hazor II, Plate CXIV.

	<u>Locus</u>	<u>Stratum</u>	<u>No.</u>
a.	6205 T19	3	2
b.	6192 T25	3	3
c.	6205	3	10
d.	6206 T33	3	11

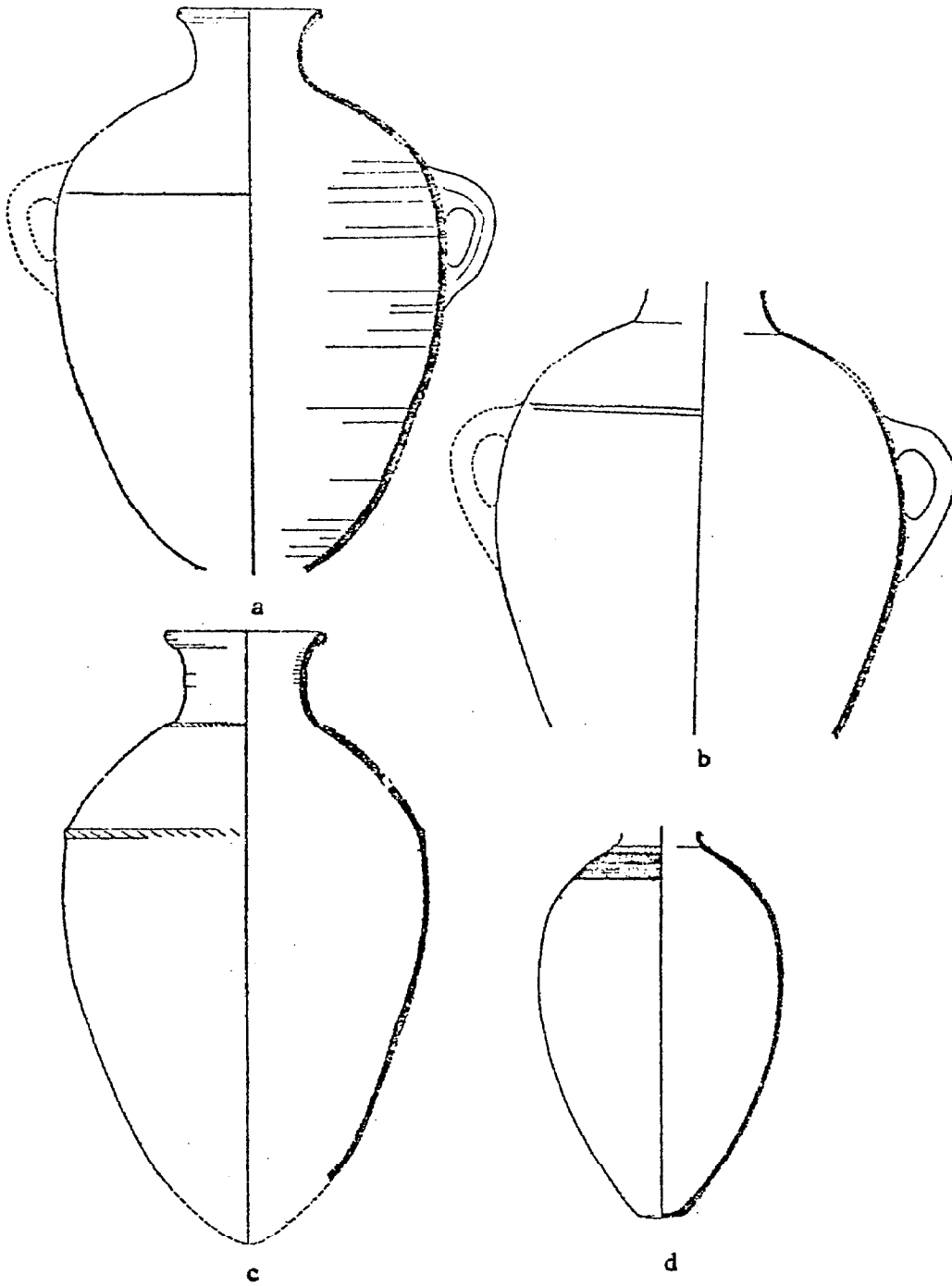


Fig. 370.--Hazor: Selected Pottery from the Lower City, Areas C,  
K and H

Yadin et. al., Hazor II.

Area C, Plate CXV:

a.	Locus 6212	Stratum 3	No. 10
b.	Locus 6205	Stratum 3	No. 11
c.	Locus 6212	Stratum 3	No. 12
d.	Locus 6206	Stratum 3	No. 13

Area K, Plate CCLXXXVII:

e.	Locus 5005	Stratum 3	No. 4
f.	Locus 5001	Stratum 3	No. 6
g.	Locus	Stratum	No. 7
h.	Locus 5001	Stratum 3	No. 18
i.	Locus 5016	Stratum 3	No. 19
j.	Locus 5021/1	Stratum 3	No. 23
k.	Locus 5005	Stratum 3	No. 24

Area H, Plate CCLX:

l.	Locus 2151	Stratum 3	No. 2
m.	Locus 2167	Stratum 3	No. 3
n.	Locus 2148	Stratum 3	No. 4

Plate CCLIX:

o.	Locus 2117	Stratum 3	No. 2
p.	Locus 2152	Stratum 3	No. 9
q.	Locus 2163	Stratum 3	No. 10
r.	Locus 2117	Stratum 3	No. 12
s.	Locus 2179	Stratum 3	No. 22
t.	Locus 2148	Stratum 3	No. 23
u.	Locus 2132	Stratum 3	No. 24

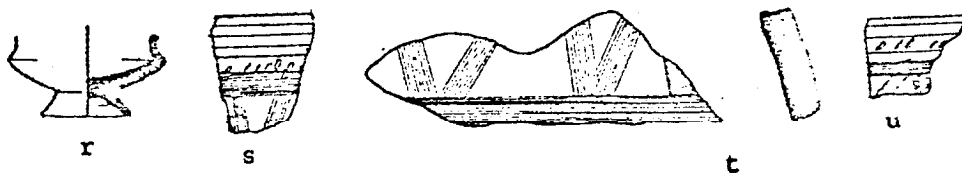
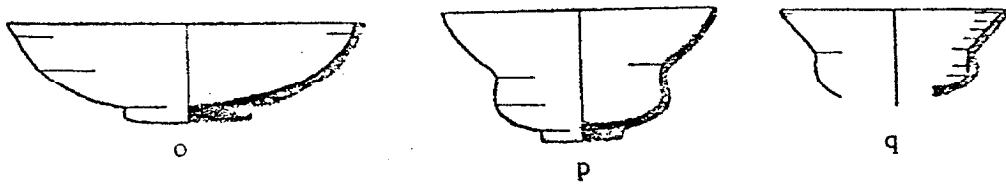
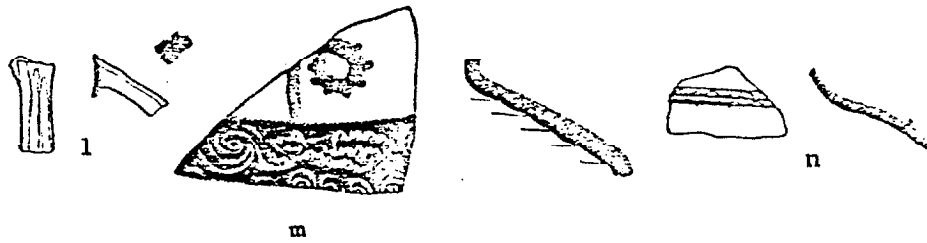
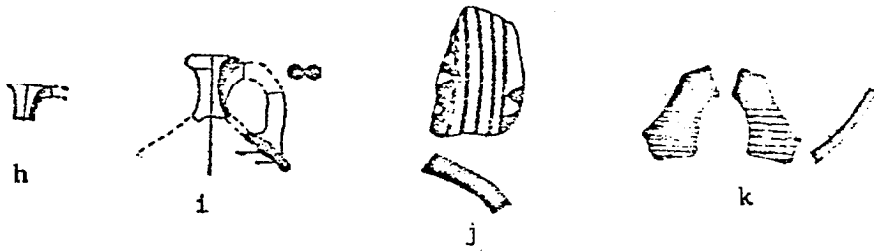
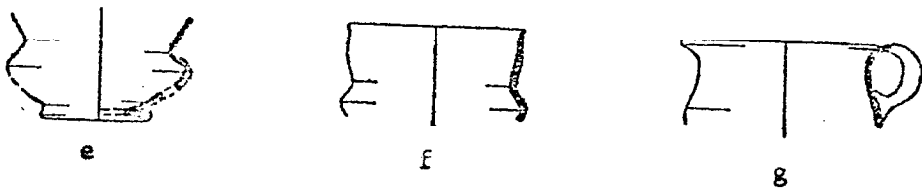
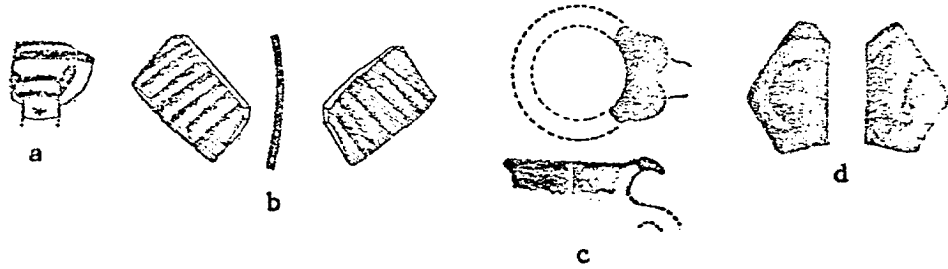


Fig. 371.--Tell Farca North: Pottery from Tomb A

de Vaux, "Le premiere campagne de fouilles a Tell el-FarCah pres  
Naplouse", Plate XIX, No. 2.

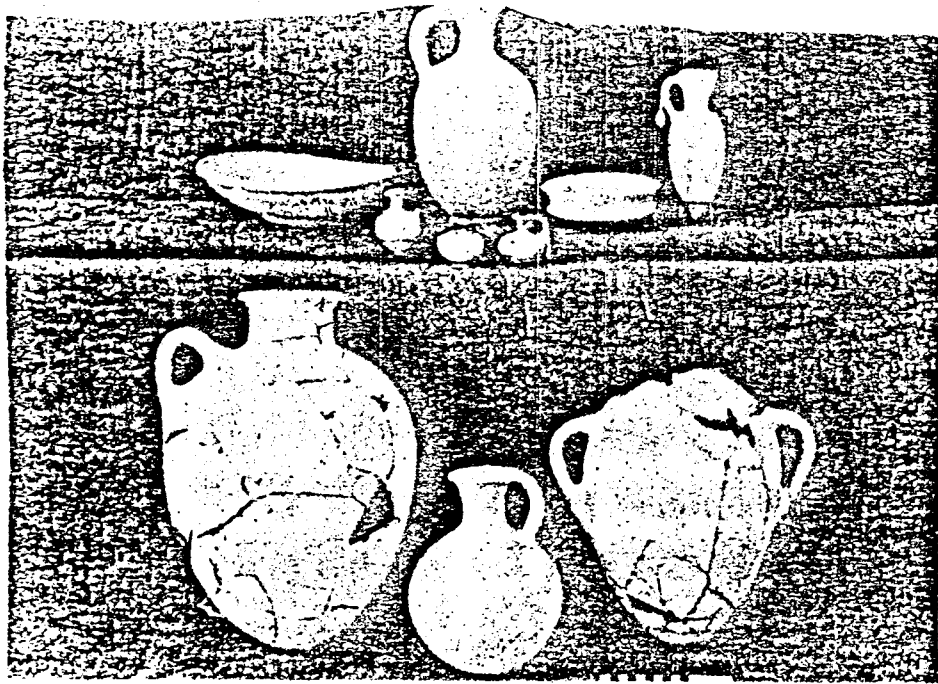


Fig. 372.--Tell Far<sup>C</sup>a North: Bronzes from Tomb A

de Vaux, "Le premiere campagne de fouilles a Tell el-Far<sup>C</sup>ah pres  
Naplouse", Plate XX.



1540

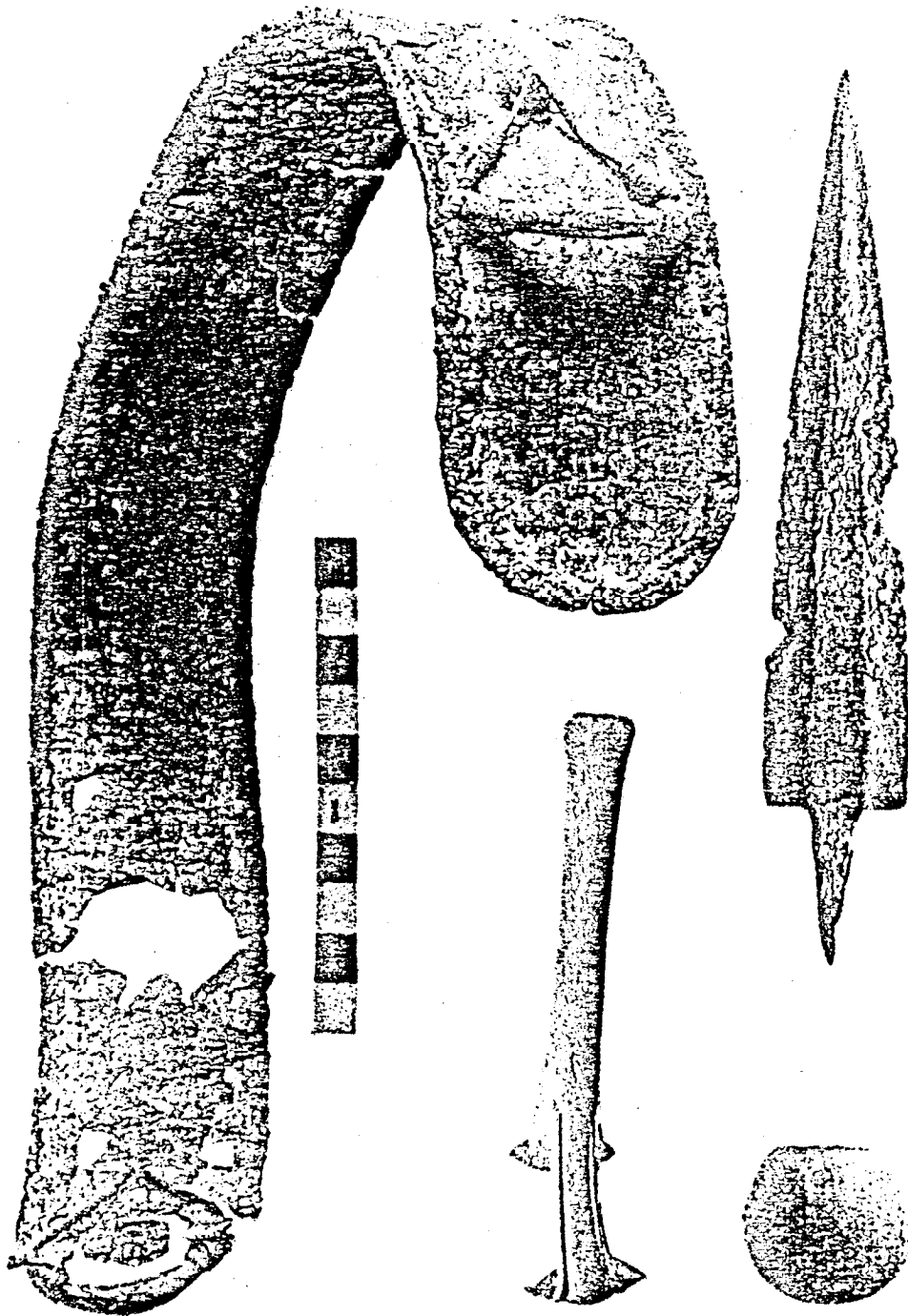


Fig. 373.--Tell Farca North: Pottery from Occupation Debris

de Vaux, "La second campagne de fouilles a Tell el-Farcah pres  
aplouse", Fig. 10.

- a. 1
- b. 2
- c. 3
- d. 4
- e. 5
- f. 6
- g. 8
- h. 7
- i. 9
- j. 10
- k. 11
- l. 13
- m. 12
- n. 14
- o. 15

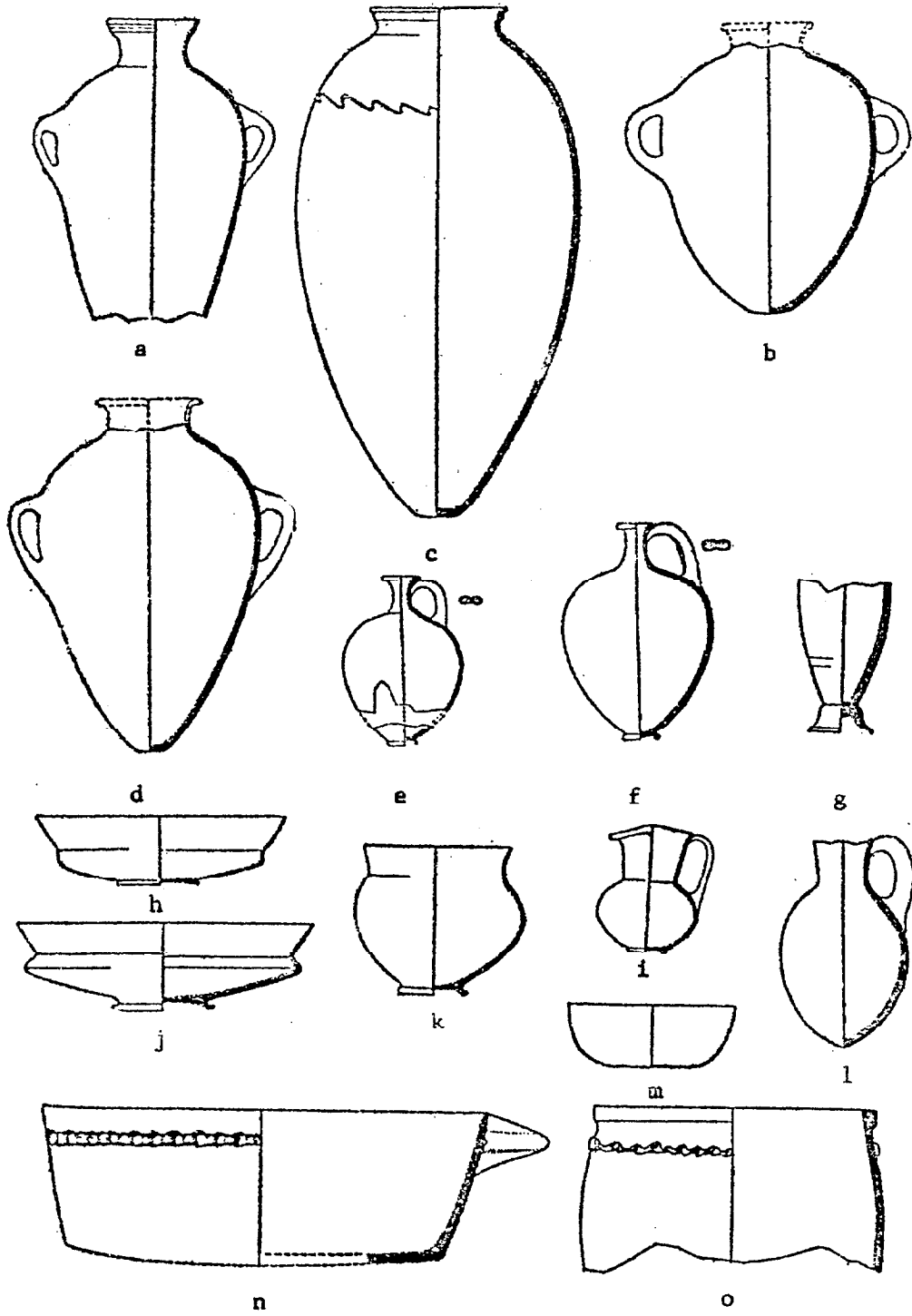


Fig. 374.--Tell Far<sup>c</sup>a North: Pottery from Tomb H

de Vaux, "La second campagne de fouilles a Tell el-Far<sup>c</sup>ah pres  
Naplouse", Fig. 17.

a. 1

b. 2

c. 5

d. 4

e. 3

f. 6

g. 7

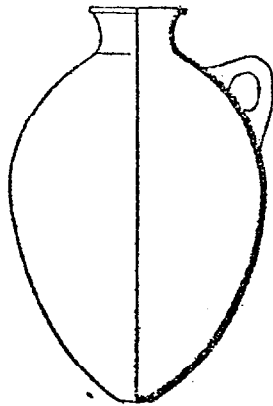
h. 8

i. 9

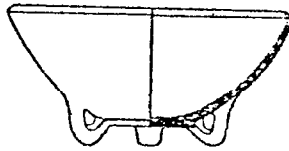
j. 11

k. 10

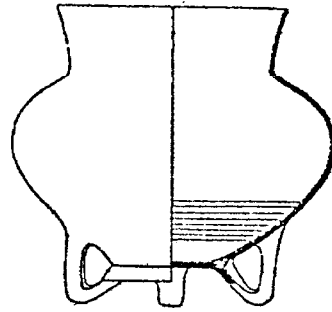
l. 12



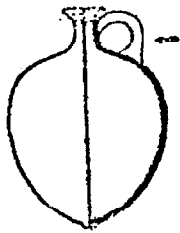
b



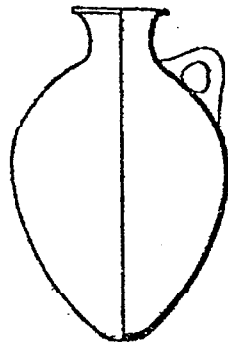
a



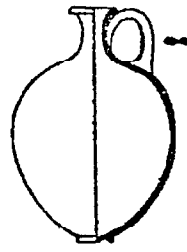
c



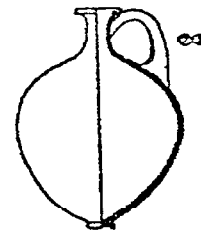
d



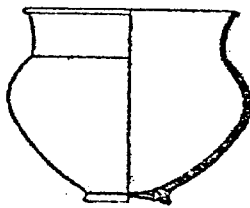
e



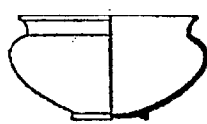
f



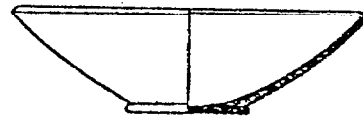
g



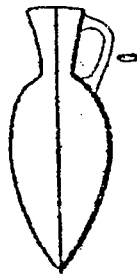
h



i



j



k



l

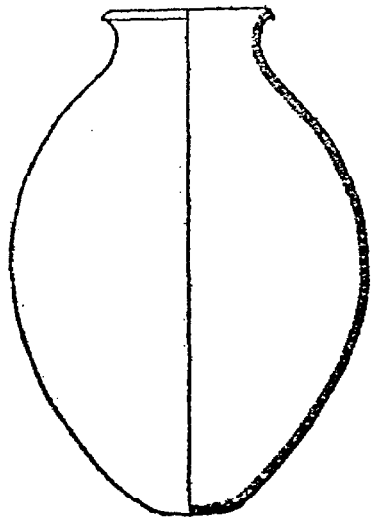
Fig. 375.--Tell Far'ah North: Pottery

Pottery of MB II Date from Tomb B (reference: de Vaux, "La second campagne de fouilles a Tell el-Far'ah pres Naplouse", Fig. 11):

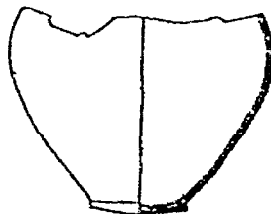
- a. 1
- b. 2
- c. 3

Pottery of MB III Date from Tomb 3 (reference: de Vaux, "la deuxieme campagne de fouilles a Tell Far'ah pres Naplouse: rapport preliminaire [suite] ", fig. 3):

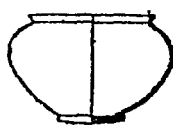
- d. 1
- e. 2
- f. 3
- g. 4
- h. 5
- i. 6
- j. 7
- k. 8
- l. 9
- m. 10



b



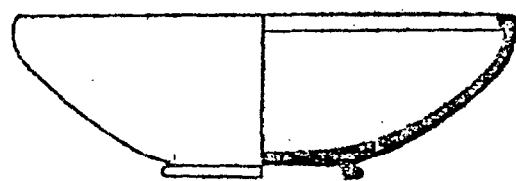
a



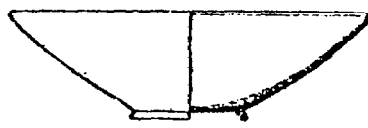
c



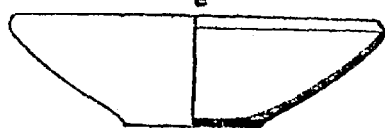
d



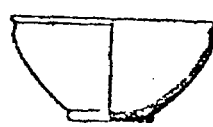
e



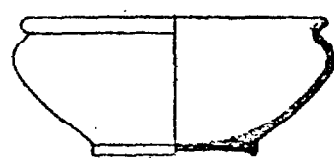
f



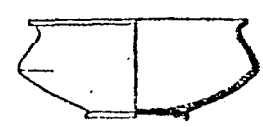
g



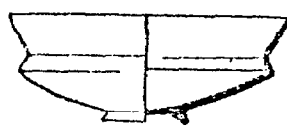
h



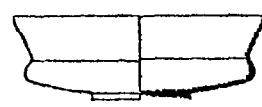
i



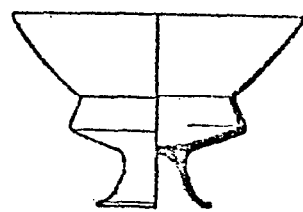
j



k



l



m

Fig. 376.--Tell Far<sup>ca</sup> North: Selected Pottery from Tomb 3

de Vaux, "La deuxieme campagne de fouilles a Tell Far<sup>ca</sup>ah pres  
Naplouse: rapport preliminaire (suite)", Fig. 3.

- a. 11
- b. 12
- c. 13
- d. 14
- e. 15
- f. 16
- g. 17
- h. 18
- i. 19
- j. 20
- k. 21
- l. 22
- m. 23
- n. 24
- o. 25
- p. 26
- q. 27
- r. 28
- s. 29



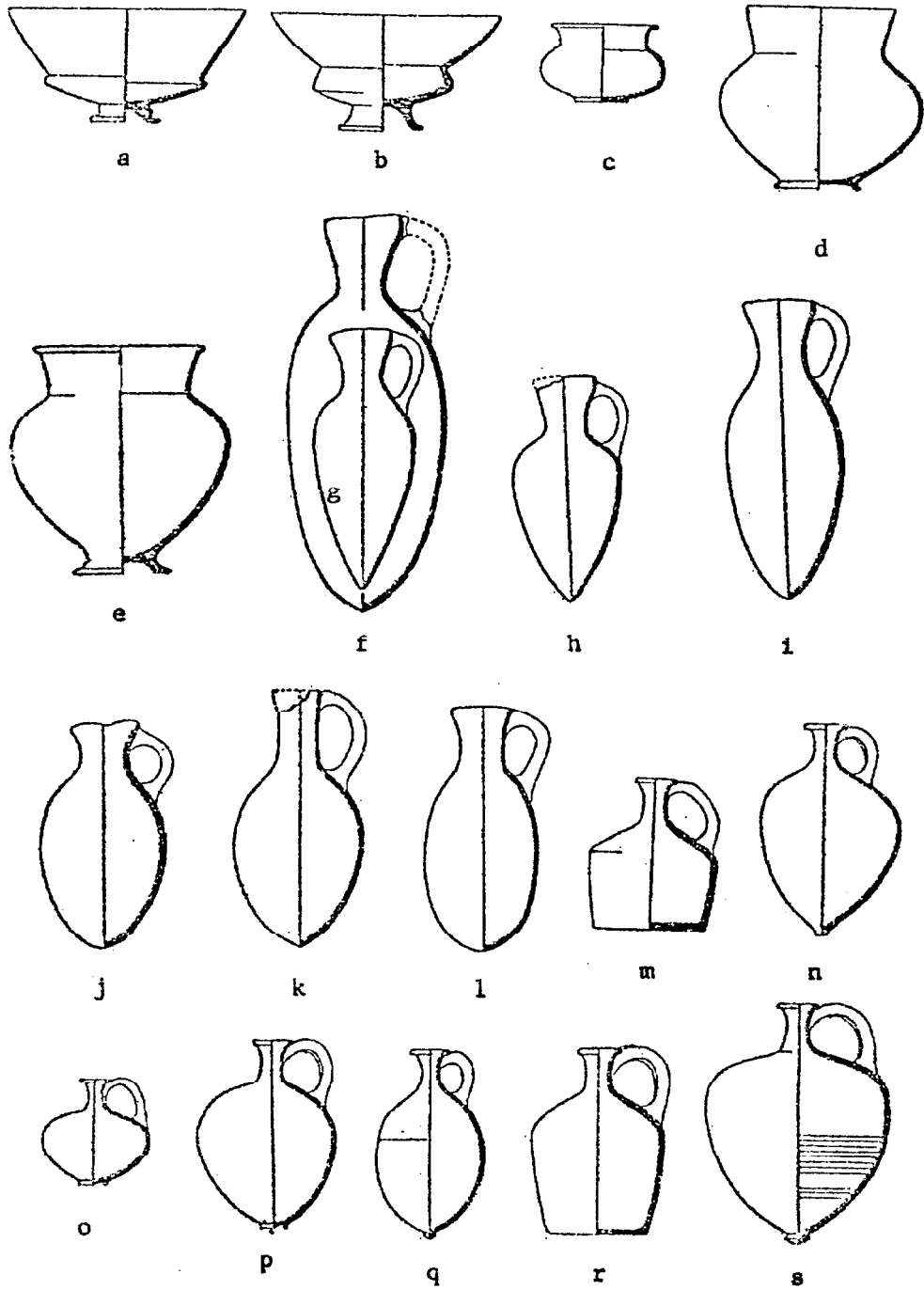


Fig. 377.--Tell Far<sup>ca</sup> North: Selected Objects from Tomb 3

de Vaux, "La deuxieme campagne de fouilles a Tell Far<sup>ca</sup>ah pres  
Naplouse: rapport preliminaire (suite)", Fig. 4.

a. 1

b. 2

c. 3

d. 4

e. 5

f. 6

g. 7

h. 8

i. 10

j. 11

k. 12

l. 9

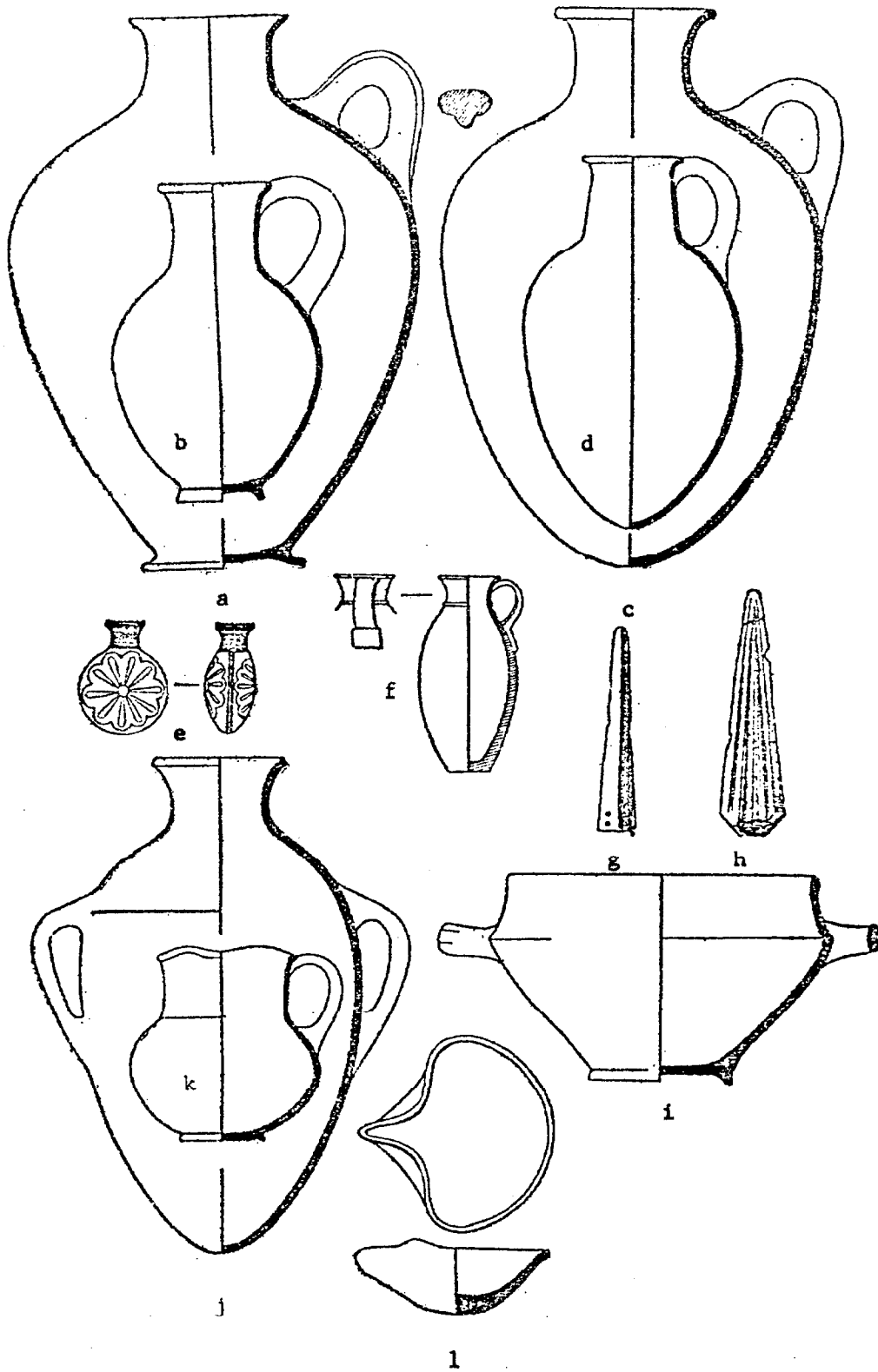


Fig. 378.--Tell Far<sup>ca</sup> North: Pottery of the MB II C from Tomb AN  
de Vaux, "Les fouilles de Tell Far<sup>ca</sup>ah: rapport preliminaire sur  
les 7<sup>me</sup>, 8<sup>me</sup>, 9<sup>me</sup> campagnes 1958-60 (suite)", Fig. 3.

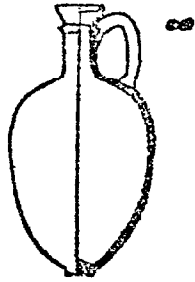
a. 1

b. 2

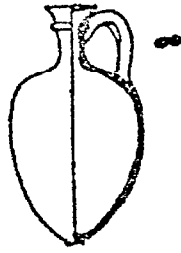
c. 3

d. 4

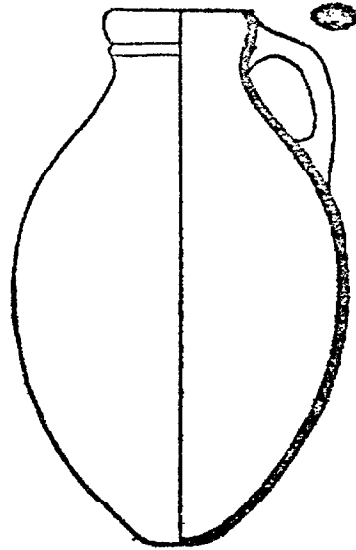
e. 5



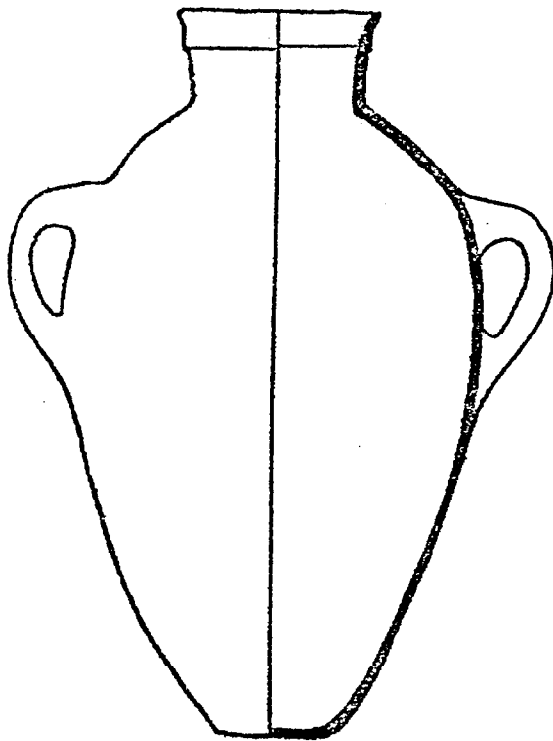
a



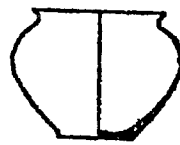
b



c



e



d

AD Fig. 379.--Tell Far'ah North: Pottery of the MB II C from Tomb

de Vaux, "Les fouilles de Tell Far'ah: rapport preliminaire sur les 7<sup>me</sup>, 8<sup>me</sup>, 9<sup>me</sup> campagnes 1958-60 (suite)", Fig. 6.

a. 1

b. 2

c. 7

d. 6

e. 5

f. 4

g. 3

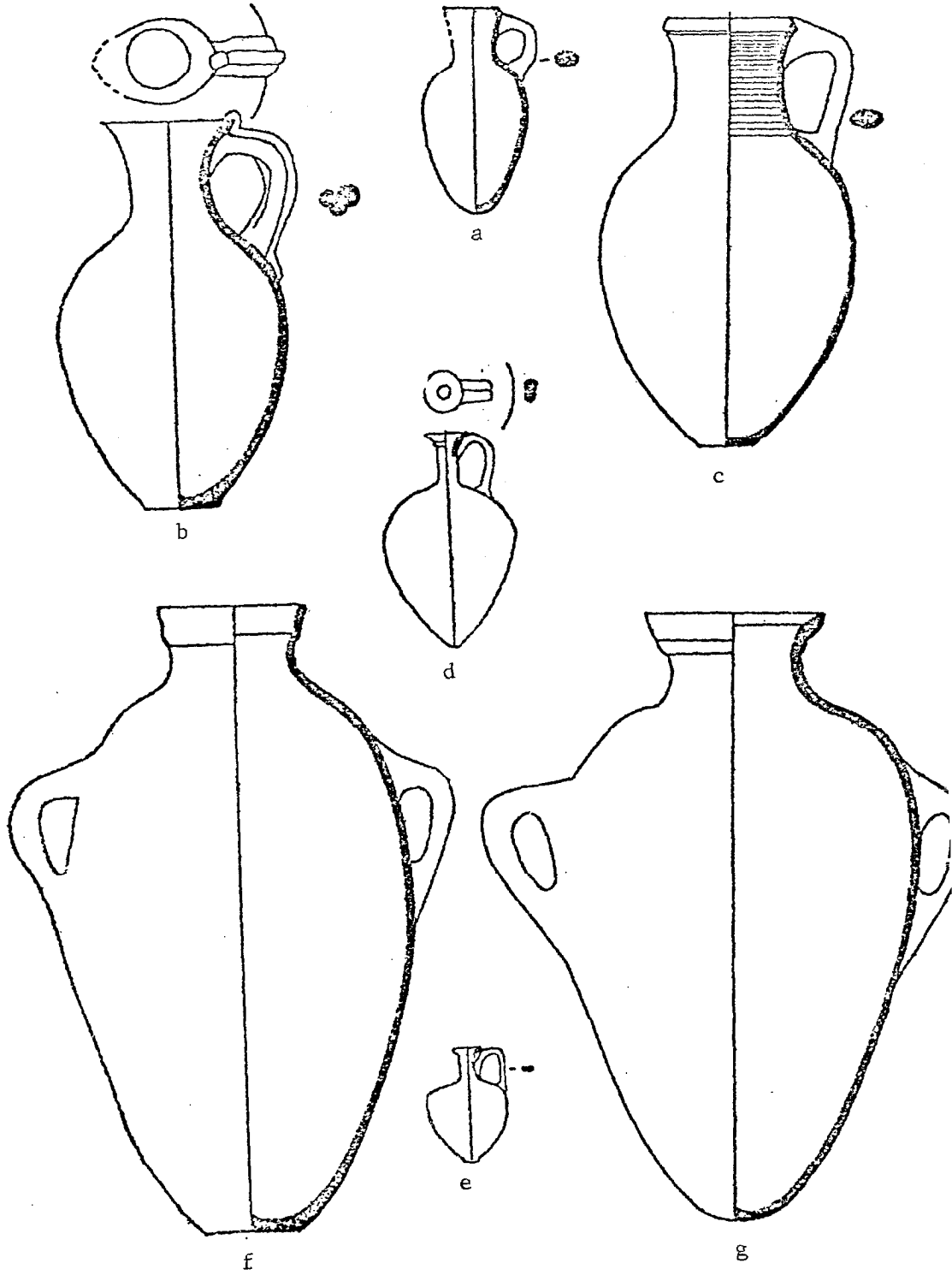
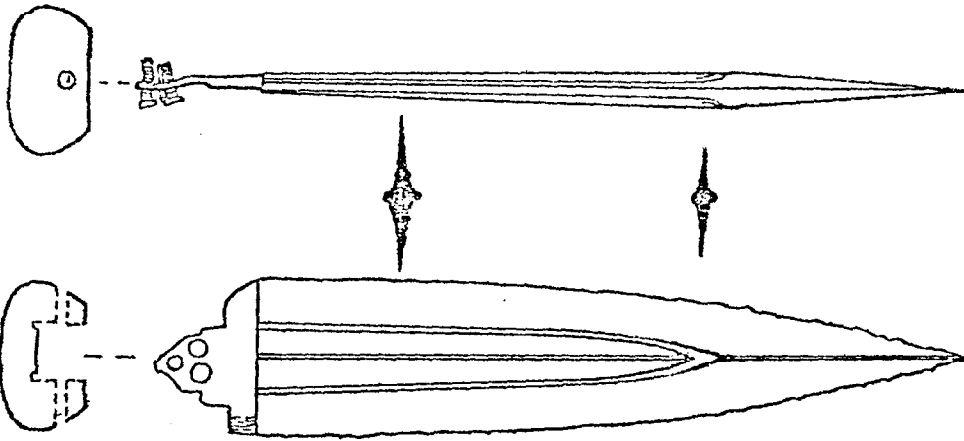


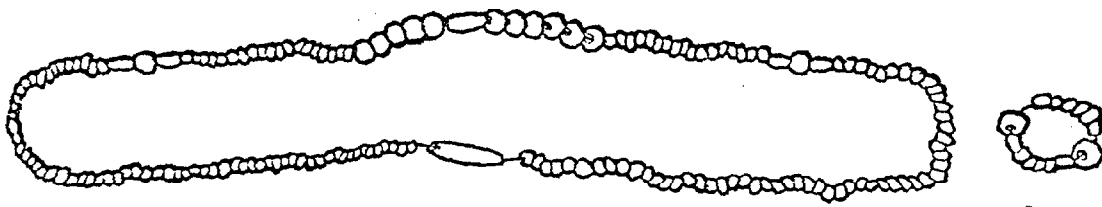
Fig. 380.--Tell Far'a North: Objects from Tombs AN and AD  
de Vaux, "Les fouilles de Tell Far'ah: rapport preliminaire sur  
les 7<sup>me</sup>, 8<sup>me</sup>, 9<sup>me</sup> campagnes 1958-60 (suite)", Fig. 4.

- a. Tomb AN No. 2
- b. Tomb AN No. 3
- c. Tomb AN No. 4
- d. Tomb AN No. 5
- e. Tomb AN No. 6
- f. Tomb AN No. 7
- g. Tomb AD No. 1



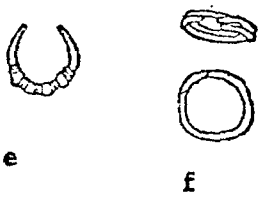


a



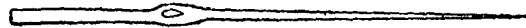
b

c

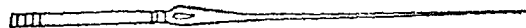


e

f



d



g

Fig. 381.--Tell Far'ah North: Pottery from Tomb X

de Vaux, "Les fouilles de Tell Far'ah: rapport preliminaire sur les 7<sup>me</sup>, 8<sup>me</sup>, 9<sup>me</sup> campagnes 1958-60 (suite)", Fig. 5.

- a. 1
- b. 2
- c. 3
- d. 4
- e. 5

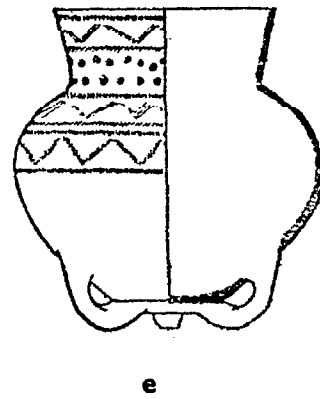
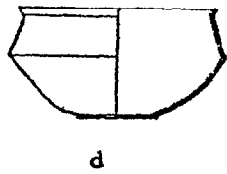
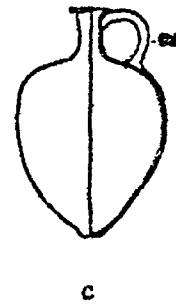
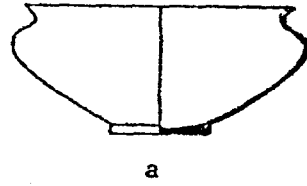
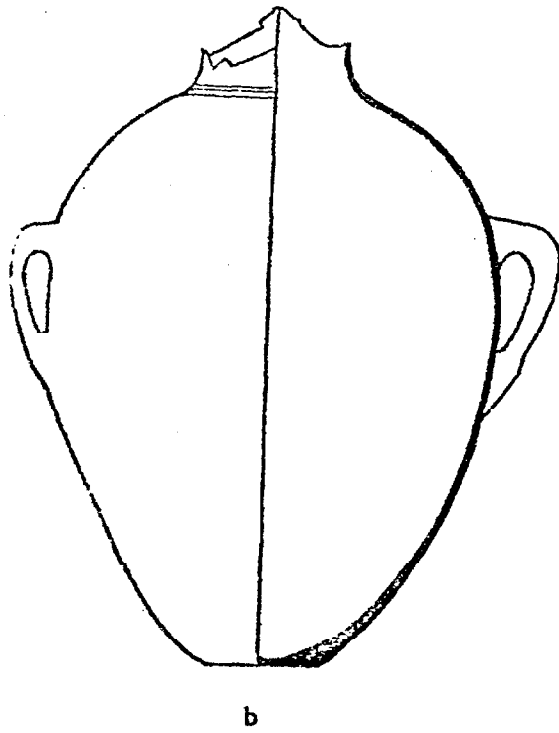


Fig. 382.--Tell Far'a North: Pottery from Tomb AM

de Vaux, "Les fouilles de Tell Far'ah: rapport preliminaire sur les 7<sup>me</sup>, 8<sup>me</sup>, 9<sup>me</sup> campagnes 1958-60 (suite)", Fig. 2.

a. 1

b. 2

c. 3

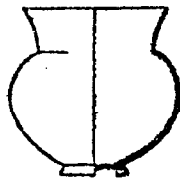
d. 4

e. 6

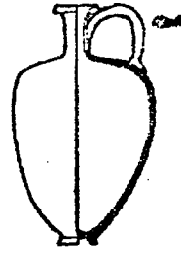
f. 5



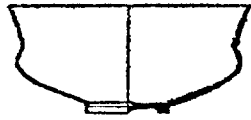
a



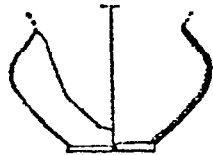
b



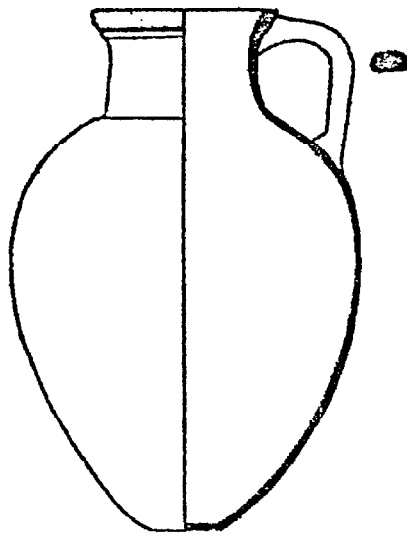
c



d



e



f

Fig. 383.--Ras el 'Ain: Selected Pottery from the First Season

J. H. Iliffe, "Pottery from Ras el 'Ain".

- a. Page 122, No. 1
- b. Page 122, No. 2
- c. Page 122, No. 15
- d. Page 122, No. 7
- e. Page 123, No. 23
- f. Page 123, No. 29
- g. Page 123, No. 51
- h. Page 123, No. 50
- i. Page 123, No. 25
- j. Page 124, No. 60
- k. Page 124, No. 68
- l. Page 125, No. 74
- m. Page 125, No. 76
- n. Page 125, No. 84
- o. Page 125, No. 36
- p. Page 125, No. 37
- q. Page 125, No. 38
- r. Page 125, No. 69

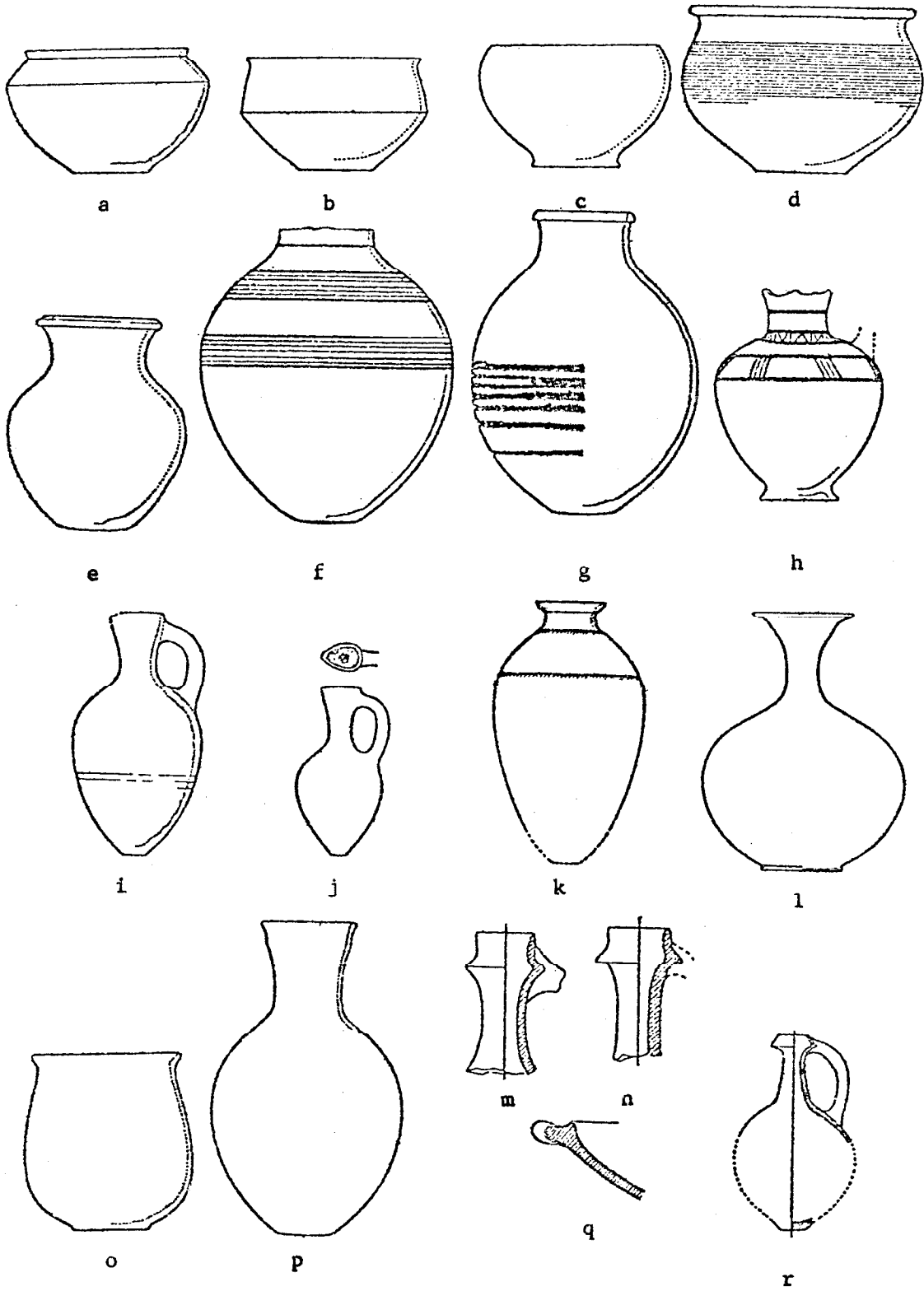
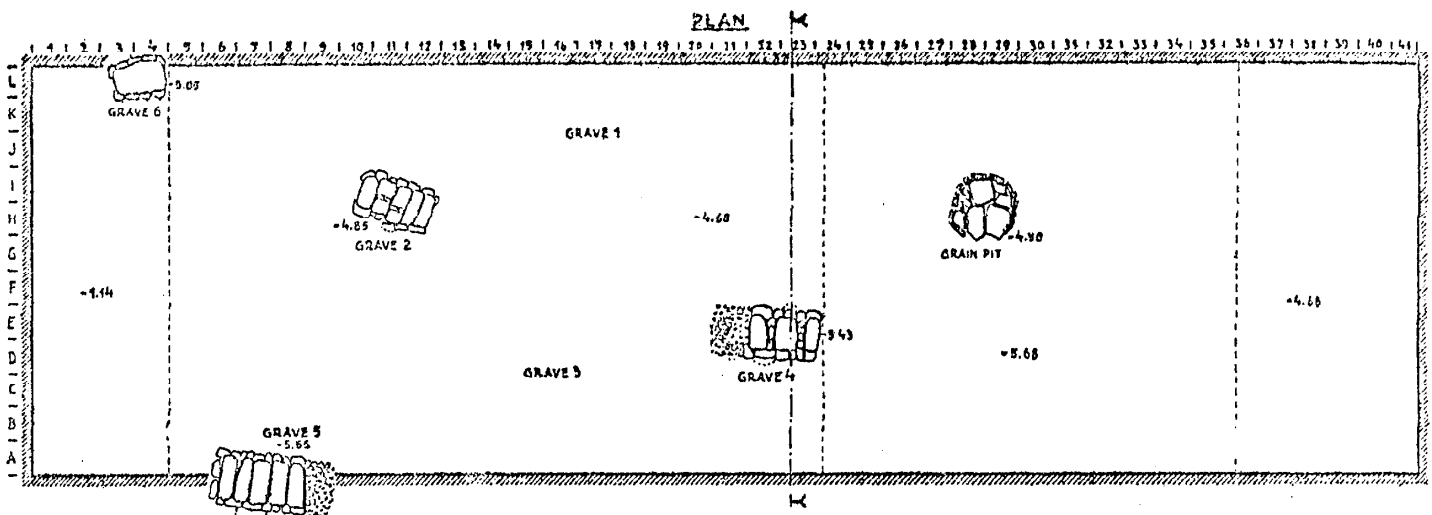


Fig. 384.--Ras el 'Ain: The Plan of the Cemetery  
J. Ory, "Excavations at Ras el 'Ain", Fig. 2.





**TELL RAS EL AIN**  
AREA EXCAVATED 1936

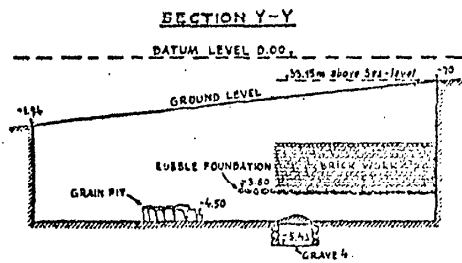


Fig. 385.--Ras el 'Ain: Pottery from "Stratum I"

J. Ory, "Excavations at Ras el 'Ain".

a. Page 107 No. 1

b. Page 107 No. 2B A red-cross bowl

c. Page 108 No. 4

d. Page 108 No. 5

e. Page 108 No. 7

f. Page 108 No. 8

g. Page 109 No. 12

h. Page 109 No. 13

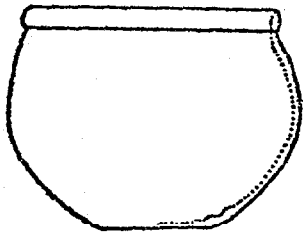
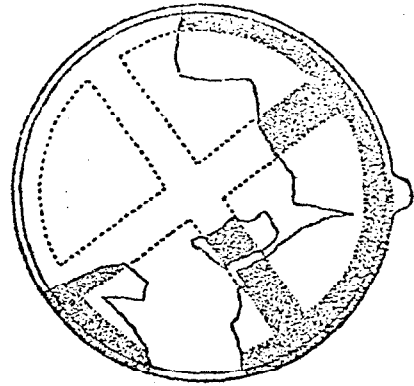
i. Page 109 No. 15

j. Page 109 No. 16

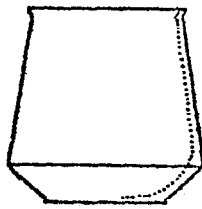
k. Page 110 No. 21



a



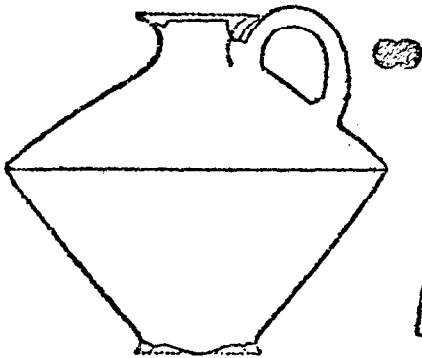
b



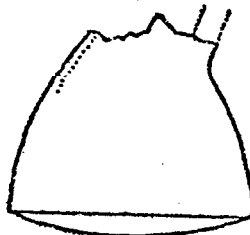
c



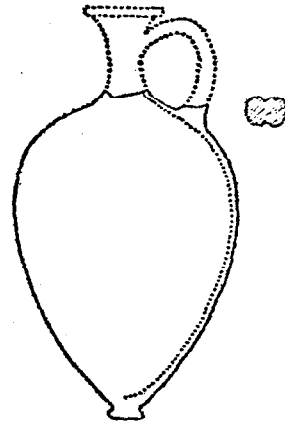
d



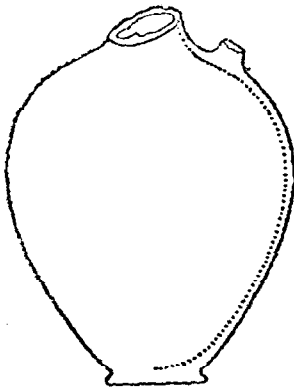
e



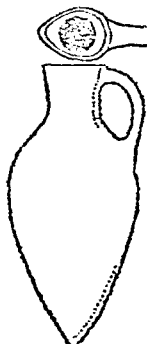
f



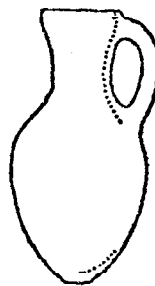
g



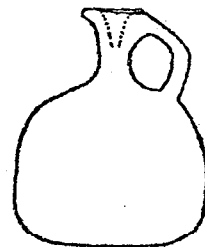
h



i



j

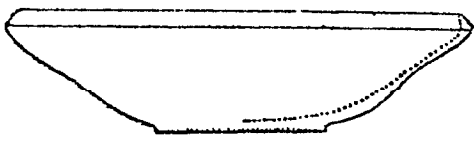


k

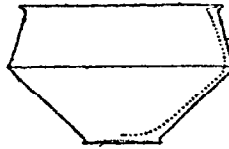
Fig. 386.--Ras el 'Ain: Pottery from "Stratum II", Below the Rubble Foundation

J. Ory, "Excavations at Ras el 'Ain".

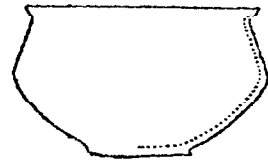
- a. Page 110, No. 24
- b. Page 110, No. 23
- c. Page 111, No. 28
- d. Page 111, No. 30
- e. Page 111, No. 36
- f. Page 111, No. 37
- g. Page 112, No. 38
- h. Page 112, No. 41B
- i. Page 112, No. 43
- j. Page 113, No. 44
- k. Page 113, No. 45
- l. Page 113, No. 48
- m. Page 114, No. 58A



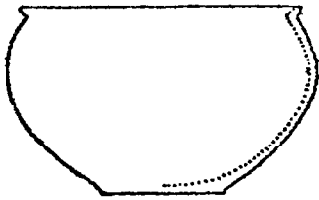
a



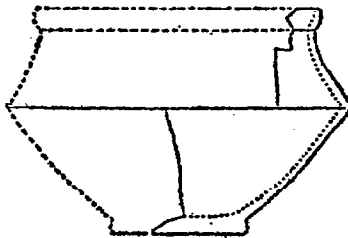
b



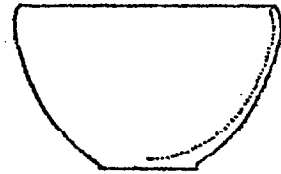
c



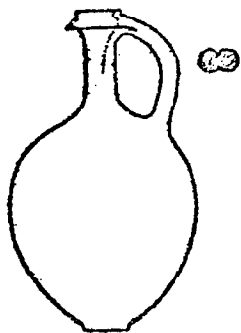
d



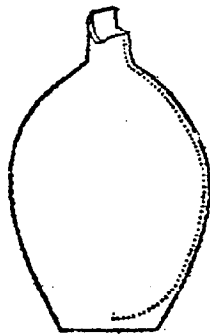
e



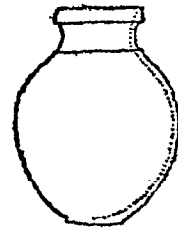
f



g



h



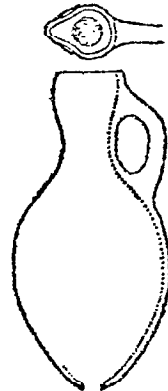
i



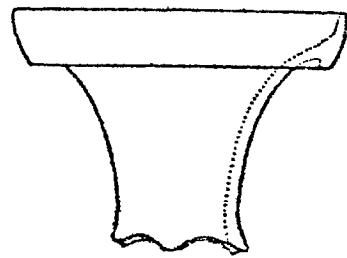
j



k



l



m

Fig. 387.--Ras el 'Ain: Pottery from Tomb 2

J. Ory, "Excavations at Ras el 'Ain".

- a. Page 114, No. 60
- b. Page 114, No. 61
- c. Page 114, No. 63
- d. Page 115, No. 65
- e. Page 115, No. 64
- f. Page 115, No. 66
- g. Page 115, No. 67
- h. Page 115, No. 69
- i. Page 116, No. 71
- j. Page 116, No. 73
- k. Page 116, No. 74
- l. Page 116, No. 75
- m. Page 116, No. 76
- n. Page 116, No. 72 Amphora

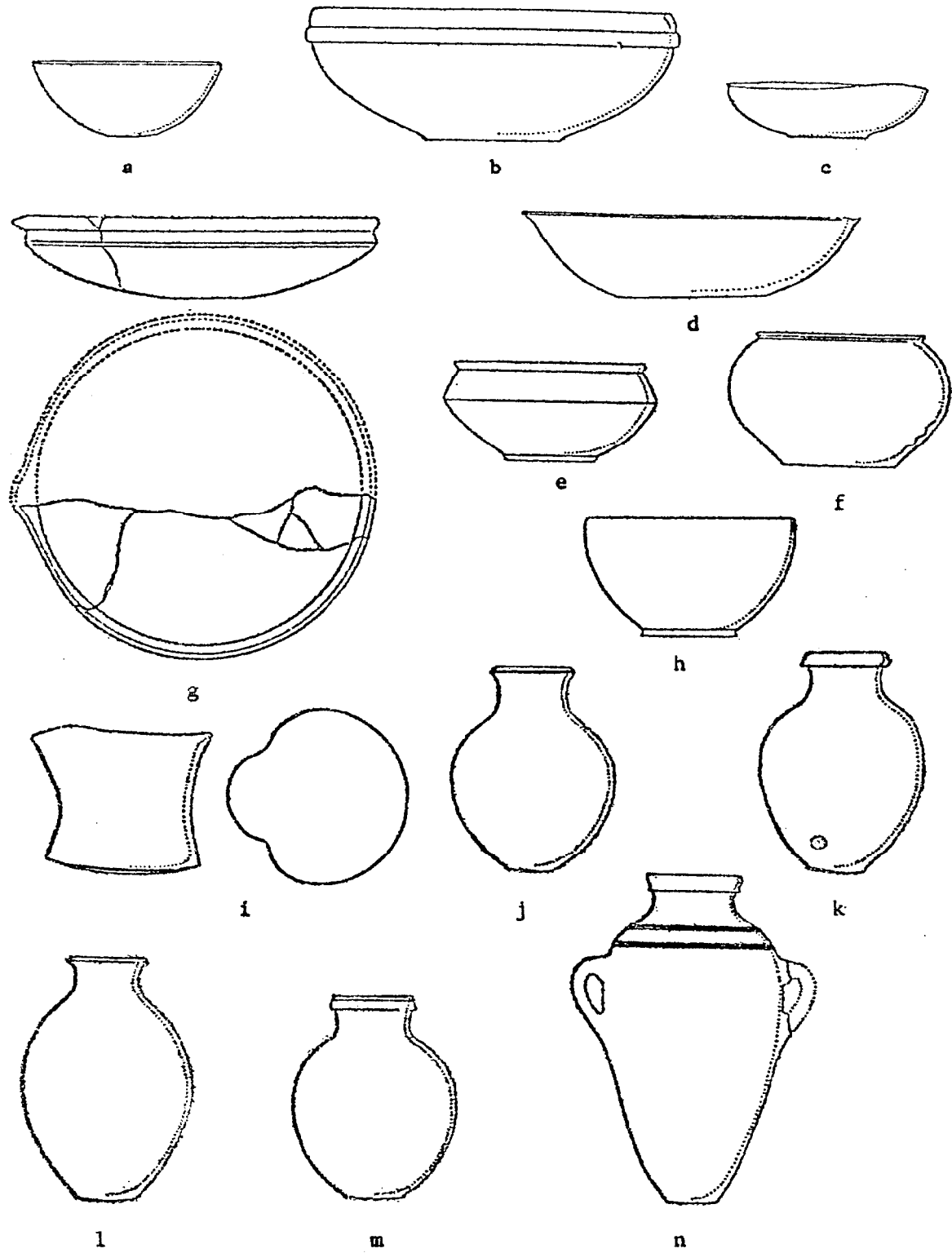
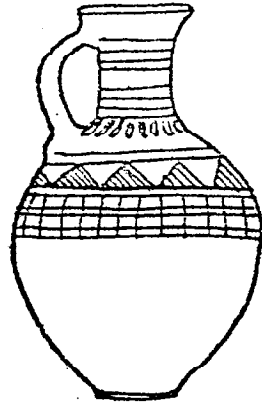


Fig. 388.--Ras el 'Ain: Pottery from Tomb 2 (Cont.)

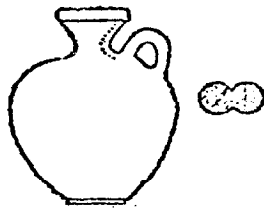
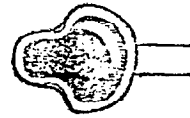
- a. Amiran: Ancient Pottery of the Holy Land, Plate 35, No. 8.
- b. Ory, "Excavations at Ras el 'Ain", Page 117, No. 78
- c. Ibid., No. 79
- d. Ibid., No. 80
- e. Ibid., No. 82
- f. Ibid., Page 198, No. 87

NOTE: A number of juglets were omitted--see Plate XXXI, 5; XXIX, 2; XXX; 11 (Not illustrated); XXIX, 5.

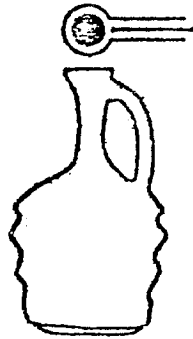




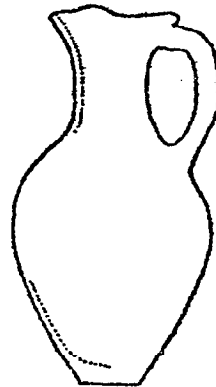
a



b



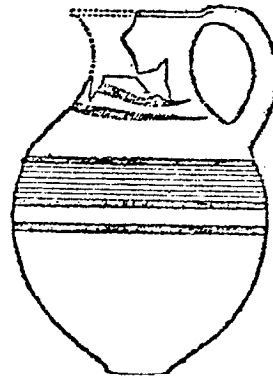
d



c



e



f

Fig. 389.--Ras el 'Ain: Pottery from Tomb 4

a. With a bilobate lip--Amiran, Ancient Pottery of the Holy Land,  
p. 135, No. 7.<sup>1</sup>

b. With a bilobate lip--Ibid., p. 33, No. 9.<sup>2</sup>

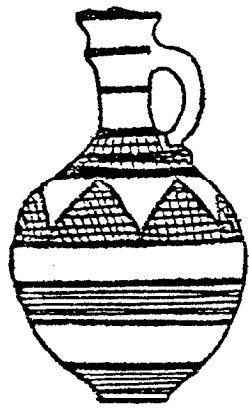
c. Ory, "Excavations at Ras el 'Ain II", p. 118, No. 89.

d. Ibid., No. 91

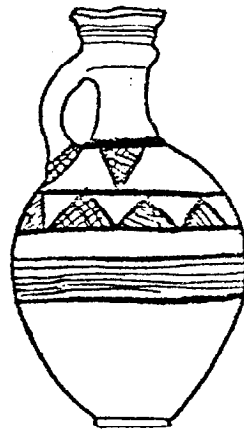
NOTE: No. 92 is same as No. 91.

<sup>1</sup>Ory, "Excavations at Ras el 'Ain II", p. 118, No. 90.

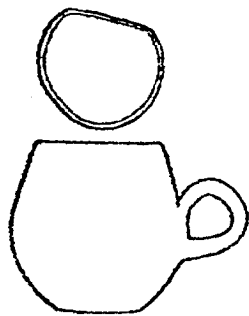
<sup>2</sup>Ory, "Excavations at Ras el 'Ain II", p. 118, No. 89.



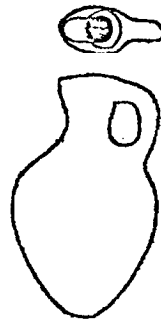
a



b



c



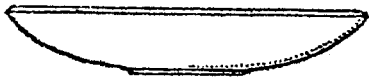
d

Fig. 390.--Ras el 'Ain: Pottery from Tomb 5

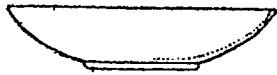
J. Ory, "Excavations at Ras el 'Ain II".

- a. Page 118, No. 96
- b. Page 119, No. 100
- c. Page 119, No. 101
- d. Page 119, No. 103
- e. Page 119, No. 104
- f. Page 119, No. 107

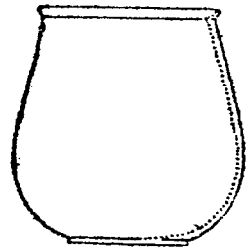
NOTE: The jug No. 106 had a flattish base, broken rim and painted decoration, including a fringe of tassel-like vertical strokes in red resembling painted vase No. 77, from Gr. 2. See Plate XXX-3.



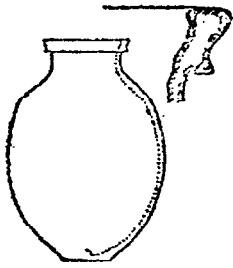
a



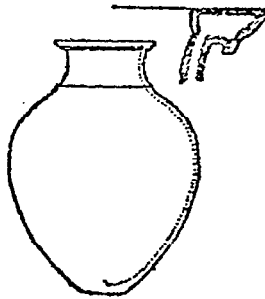
b



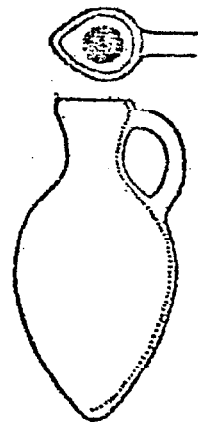
c



d



e

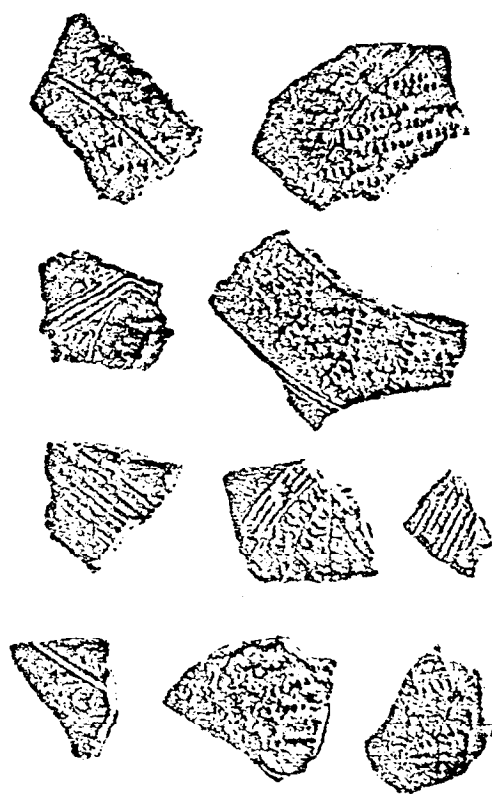
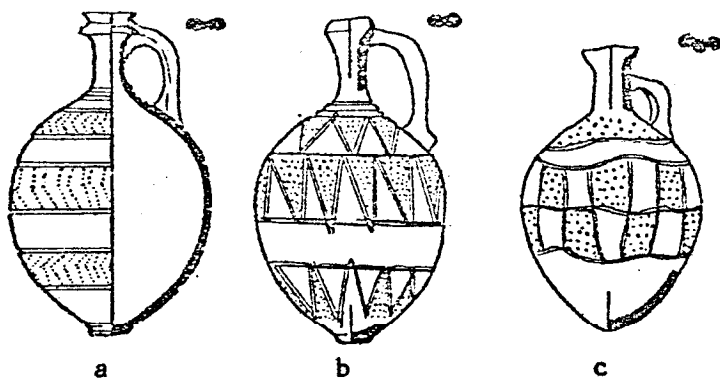


f

Kilns Fig. 391.--Affula: Juglets and Fragments of MB II Date from the

Amiran, Ancient Pottery of the Holy Land.

- a. P. 36      No. 3
- b. P. 36      No. 4
- c. P. 36      No. 5
- d. Photo 124 (fragments)



d

Fig. 392.--Affula: Pottery

Sukenik, Archaeological Investigations at Affula, Plate XV.

- |        |           |
|--------|-----------|
| No. 1  | From F,19 |
| No. 2  | From F,19 |
| No. 3  | From F,19 |
| No. 4  | From F,19 |
| No. 5  | From F,19 |
| No. 6  | From F,19 |
| No. 7  | From F,19 |
| No. 8  | From F,19 |
| No. 9  | From F,19 |
| No. 10 | From F,19 |
| No. 11 | From F,19 |
| No. 12 | From F,19 |
| No. 13 | From F,19 |
| No. 14 | From F,19 |
| No. 15 | From F,19 |
| No. 16 | From F,19 |
| No. 17 | From F,19 |
| No. 18 | From F,19 |
| No. 19 | From A    |
| No. 20 | From A    |



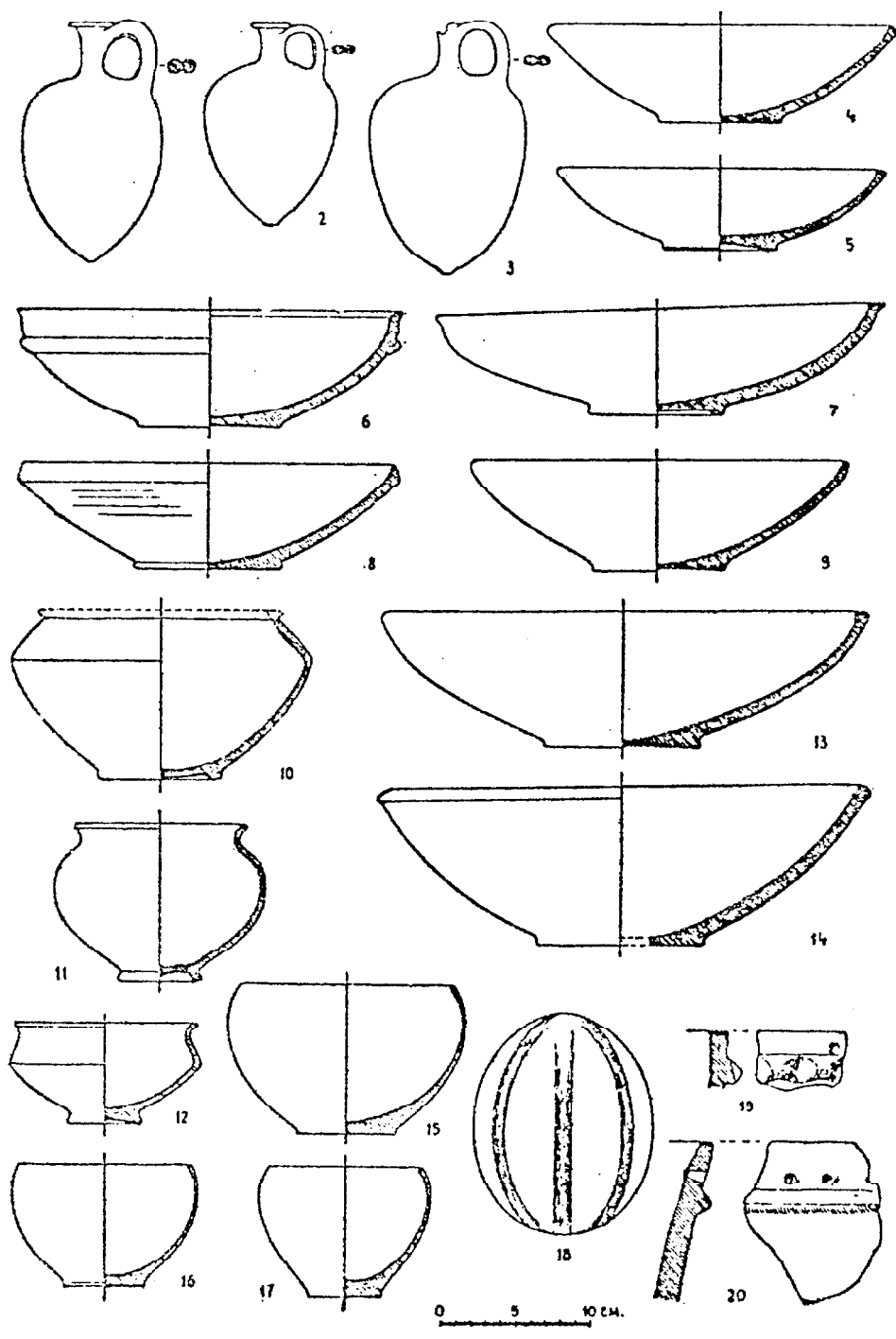


Fig. 393.--Affula: Pottery (Cont.)

Sukenik, Archaeological Investigations at Affula, Plate XIV.

- |        |           |
|--------|-----------|
| No. 1  | From A,3  |
| No. 2  | From A    |
| No. 3  | From E,11 |
| No. 4  | From E,11 |
| No. 5  | From E    |
| No. 6  | From E,12 |
| No. 7  | From E,14 |
| No. 8  | From E,12 |
| No. 9  | From E,12 |
| No. 10 | From E    |
| No. 11 | From E,12 |
| No. 12 | From E,13 |
| No. 13 | From F,19 |
| No. 14 | From F,19 |
| No. 15 | From F,19 |
| No. 16 | From F,19 |
| No. 17 | From F,19 |
| No. 18 | From F,19 |

NOTE: Tell el-Yehudiyeh juglet, broken into many pieces. Triple handle; the third strand of it may represent a snake the head of which is missing. Dark gray ware; dotted ornament filled in with white paste; traces of brown burnished slip.

