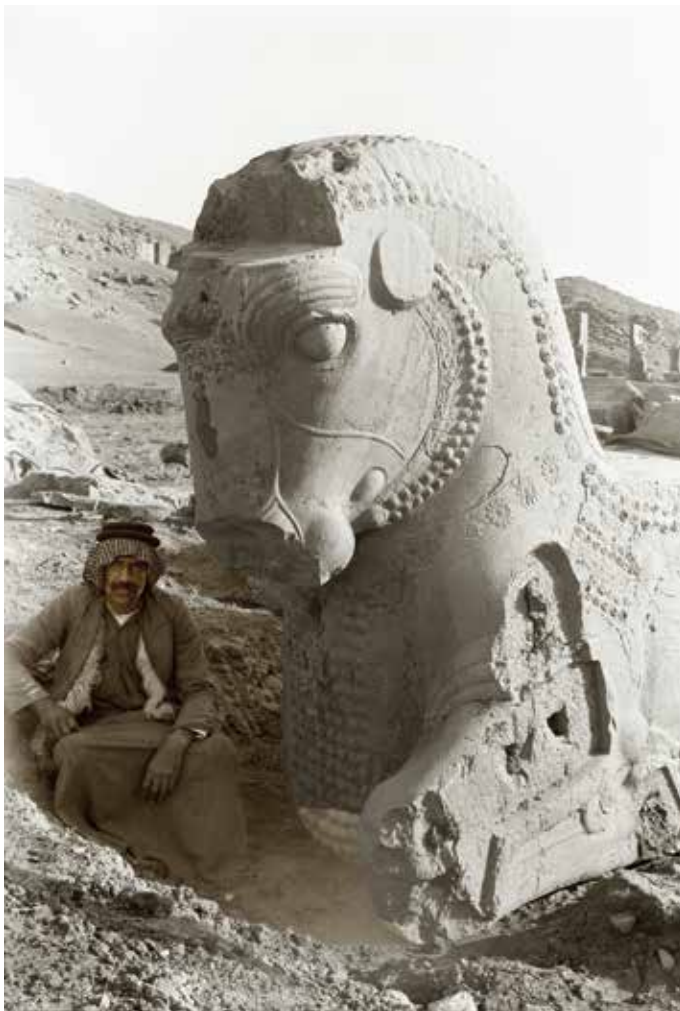


FACULTY AND STAFF





Above and overleaf: Worker alongside a double-bull column capital from the Unfinished Gate at Persepolis. Herzfeld Expedition, 1933 (D. 13305)

FACULTY AND STAFF OF THE ORIENTAL INSTITUTE

July 1, 2015–June 30, 2016

Area Code 773

EMERITUS FACULTY

Lanny Bell, Associate Professor Emeritus of Egyptology

Robert D. Biggs, Professor Emeritus of Assyriology
r-biggs@uchicago.edu, 702-9540

John A. Brinkman, Charles H. Swift Distinguished Service Professor Emeritus of Mesopotamian
History
j-brinkman@uchicago.edu, 702-9545

Miguel Civil, Professor Emeritus of Sumerology
m-civil@uchicago.edu, 702-9542

Peter F. Dorman, Professor Emeritus of Egyptology
p-dorman@uchicago.edu

Walter T. Farber, Professor Emeritus of Assyriology
w-farber@uchicago.edu, 702-9546

Norman Golb, Ludwig Rosenberger Professor Emeritus of Jewish History and Civilization
n-golb@uchicago.edu, 702-9526

Gene B. Gragg, Professor Emeritus of Near Eastern Languages
g-gragg@uchicago.edu, 702-9511

Matthew W. Stolper, John A. Wilson Professor Emeritus of Assyriology, Director, Persepolis
Fortification Archive Project
m-stolper@uchicago.edu, 702-9553

Edward F. Wente, Professor Emeritus of Egyptology
e-wente@uchicago.edu, 702-9539

K. Aslihan Yener, Associate Professor Emeritus of Archaeology

FACULTY

Fred M. Donner, Professor of Near Eastern History
f-donner@uchicago.edu, 702-9544

McGuire Gibson, Professor of Mesopotamian Archaeology
m-gibson@uchicago.edu, 702-9525

FACULTY AND STAFF

- Petra Goedegebuure, Associate Professor of Hittitology; Senior Editor, Chicago Hittite Dictionary Project
pgoedegebuure@uchicago.edu, 702-9550
- Rebecca Hasselbach-Andee, Associate Professor of Comparative Semitics
hasselb@uchicago.edu, 834-3290
- Janet H. Johnson, Morton D. Hull Distinguished Service Professor of Egyptology; Editor, Chicago Demotic Dictionary Project
j-johnson@uchicago.edu, 702-9530
- Walter E. Kaegi, Professor of Byzantine-Islamic Studies
kwal@uchicago.edu, 702-8346, 702-8397
- Nadine Moeller, Associate Professor of Egyptian Archaeology
nmoeller@uchicago.edu, 834-9761
- Brian P. Muhs, Associate Professor of Egyptology
bpmuhs@uchicago.edu, 702-9533
- James F. Osborne, Assistant Professor of Near Eastern Archaeology (from July 1, 2015)
jamesosborne@uchicago.edu, 702-0568
- Dennis G. Pardee, Henry Crown Professor of Hebrew Studies
d-pardee@uchicago.edu, 702-9541
- Susanne Paulus, Assistant Professor of Assyriology (from July 1, 2015)
paulus@uchicago.edu, 702-2778
- Richard Payne, Neubauer Family Assistant Professor
repayne@uchicago.edu, 834-9897
- Hervé Reculeau, Assistant Professor of Assyriology (from July 1, 2015)
hreculeau@uchicago.edu, 702-4592
- Robert K. Ritner, Professor of Egyptology
r-ritner@uchicago.edu, 702-9547
- Martha T. Roth, Chauncey S. Boucher Distinguished Service Professor of Assyriology
mroth@uchicago.edu, 834-2448
- David Schloen, Associate Professor of Syro-Palestinian Archaeology
d-schloen@uchicago.edu, 702-1382
- Gil J. Stein, Professor of Near Eastern Archaeology; Director, Oriental Institute
gstein@uchicago.edu, 702-4098
- Theo P. J. van den Hout, Arthur and Joann Rasmussen Professor of Western Civilization, Hittite and Anatolian Languages; Executive Editor, Chicago Hittite Dictionary Project
tvdhout@uchicago.edu, 834-4688, 702-9527
- John Z. Wee, Assistant Professor of Assyriology (from July 1, 2015)
johnwee@uchicago.edu, 702-0131
- Christopher Woods, Associate Professor of Sumerology; Editor, *Journal of Near Eastern Studies*
woods@uchicago.edu, 834-8560

RESEARCH ASSOCIATES

- Abbas Alizadeh, Senior Research Associate, Iranian Prehistoric Project
a-alizadeh@uchicago.edu, 702-9531
- Annalisa Azzoni, Research Associate, Persepolis Fortification Archive Project
annalisa.azzoni@vanderbilt.edu
- Richard H. Beal, Senior Research Associate, Associate Editor, Chicago Hittite Dictionary Project
r-beal@uchicago.edu, 702-9527
- Scott Branting, Research Associate, Kerkenes Dağ Project
branting@uchicago.edu
- Elsbeth R. M. Dusinberre, Persepolis Fortification Archive Project
- Jean Evans, Research Associate, Nippur Project
jmevans@uchicago.edu
- Gertrud Farber, Research Associate, Sumerian Lexicon Project
g-farber@uchicago.edu, 702-9548
- Mark Garrison, Research Associate, Persepolis Fortification Archive Project
mgarriso@trinity.edu
- François Gaudard, Research Associate; Associate Editor, Chicago Demotic Dictionary Project;
Co-editor, Mummy Label Database Project
fgaudard@uchicago.edu, 702-9528
- Jack Green, Research Associate, Chief Curator, Museum (until 6/30/2016)
- Emily Hammer, Research Associate (Assistant Professor), Director, Center for Ancient Middle
Eastern Landscapes (CAMEL)
ehammer@uchicago.edu, 834-1152
- Lisa Heidorn, Research Associate, Oriental Institute Nubian Expedition
lheidorn@uchicago.edu
- Wouter Henkelman, Research Associate, Persepolis Fortification Archive Project
wouterhenkelman@gmail.com
- Austin “Chad” Hill, Research Associate, Galilee Prehistory Project
austinchill@uchicago.edu
- Carrie Hritz, Research Associate, Zeidan Project, Girsu Project
- W. Raymond Johnson, Research Associate (Associate Professor); Field Director, Epigraphic
Survey
wr-johnson@uchicago.edu, 834-4355
- Charles E. Jones, Research Associate, Persepolis Fortification Archive Project
cejo@uchicago.edu
- Morag M. Kersel, Research Associate, Galilee Prehistory Project
mokersel@uchicago.edu, 702-0086

FACULTY AND STAFF

Mark Lehner, Research Associate, Giza Plateau Mapping Project
MarkLehner@aol.com

Massimo Maiocchi, Writing in Early Mesopotamia and Neubauer Collegium Signs of Writing,
(from 2/18/2016)
maiocchi@uchicago.edu, 702-2589

Lec Maj, Research Associate, Persepolis Fortification Archive Project
lec@uchicago.edu

Gregory Marouard, Research Associate in Egyptian Archaeology, Tell Edfu Project, and Dendara
Project
marouardg@uchicago.edu, 834-4270

Gregory McMahon, Research Associate, Çadır Höyük Project

J. Brett McClain, Research Associate; Senior Epigrapher, Epigraphic Survey
jbmccclai@uchicago.edu, 702-9524

Carol Meyer, Research Associate, Bir Umm Fawakhir Project
c-meyer@uchicago.edu

Kiersten Neumann, Research Associate (from 2/1/2016); Curator, Museum (from 1/15/2016)
neumann@uchicago.edu, 834-8590

Artur Obłuski, Research Associate, Qasr el-Wizz Publication Project
aobluski@uchicago.edu

Rana Özbal, Research Associate, Tell Kurdu Project

Hratch Papazian, Research Associate
hratch@uchicago.edu

Marina Pucci, Research Associate, Chatal Höyük Publication Project

Clemens D. Reichel, Senior Research Associate, Diyala Project, Hamoukar
cdreiche@uchicago.edu, (416) 586-7938

Fiona Rose-Greenland, Research Associate, MANTIS Project (from 1/15/2016)
fargreenland@uchicago.edu, 795-2375

Yorke Rowan, Senior Research Associate
ymrowan@uchicago.edu, 702-0086

John Sanders, Senior Research Associate, Nippur Project
jc-sanders@uchicago.edu

Foy Scalf, Research Associate; OIDO; IDB; Head, Research Archives
scalffd@uchicago.edu, 702-9537

Oğuz Soysal, Senior Research Associate, Associate Editor, Chicago Hittite Dictionary Project
o-soysal@uchicago.edu, 702-3644

Geoffrey D. Summers, Research Associate, Kerkenes Project
summers@metu.edu.tr

Emily Teeter, Research Associate; Special Exhibits Coordinator, Museum
eteeter@uchicago.edu, 702-1062

Joanna Then-Obłuska, Research Associate, Oriental Institute Nubian Expedition
jthenobluska@uchicago.edu

Raymond Tindel, Research Associate
r-tindel@uchicago.edu

Tasha Vorderstrasse, Research Associate, Islamic Archaeology Publication Project
tkvorder@uchicago.edu

Lynn Welton, Research Project Professional, CRANE Project
lwelton@uchicago.edu, 702-7497

Donald Whitcomb, Research Associate (Associate Professor), Islamic and Medieval Archaeology
d-whitcomb@uchicago.edu, 702-9530

Magnus Widell, Research Associate
widell@uchicago.edu

Bruce B. Williams, Research Associate, Oriental Institute Nubian Expedition
bbwillia@uchicago.edu

Karen L. Wilson, Research Associate
k-wilson@uchicago.edu

Richard Zettler, Research Associate
rzettler@sas.upenn.edu

STAFF

Mohamed Abo El Makarem, Conservator, Epigraphic Survey
702-9524

Keli Alberts, Artist, Epigraphic Survey
kelialberts@hotmail.com

Susan Allison, Assistant Registrar, Museum
srallison@uchicago.edu, 702-3513

Nahed Samir Andraus, Conservator, Epigraphic Survey

Alain Arnaudies, Digital Archives Database, Epigraphic Survey
arnaudies@laposte.net

Emmanuelle Arnaudies, Digital Archives Database, Epigraphic Survey
taaptah@gmail.com

Knut Boehmer, Head, Computer Laboratory (from 10/1/2015)
kboehmer@uchicago.edu, 702-0989

Denise Browning, Manager, Suq
d-browning1@uchicago.edu, 702-9509

Rebecca Cain, Assistant Editor, Publications Office
rebeccacain@uchicago.edu, 702-5967

Dennis Campbell, Research Project Professional, Persepolis Fortification Archive Project

FACULTY AND STAFF

- D'Ann Condes, Financial Manager
dcondes@uchicago.edu, 834-9886
- Jennifer Castellanos, Assistant Manager, Suq
jcastellanos1@uchicago.edu, 702-9509
- Laura D'Alessandro, Head, Conservation Laboratory, Museum
lada@uchicago.edu, 702-9519
- Margaret De Jong, Senior Artist, Epigraphic Survey
mdejong98ch@hotmail.com, 702-9524
- Christina Di Cerbo, Epigrapher/Artist, Epigraphic Survey
tinadicerbo@hotmail.com, 702-9524
- Adam Finefrock, Visitor Services and Security Manager
ajfinefrock@uchicago.edu, 702-5112
- Michael T. Fisher, GIS and Database Development Specialist
mtf@uchicago.edu
- Nate Francia, Financial Management Assistant
nmfrancia@uchicago.edu, 834-0451
- Alejandro Gallego López, Field Director, NMA Project, Afghanistan
agallegolopez@uchicago.edu
- Susan Geshwender, Volunteer Manager, Public Education
geshwender@uchicago.edu, 702-1845
- Christian Greco, Epigrapher, Epigraphic Survey
christian.greco@museoegizio.it
- Moriah Grooms-Garcia, Youth and Family Program Manager, Public Education (until 3/18/2016)
- Samir Guindy, Administrator, Epigraphic Survey
samsgu1952@hotmail.com
- Lotfi Hassan, Senior Conservator, Epigraphic Survey
hslotfi@gmail.com, 702-9524
- Catherine Heim, Research Specialist, NMA Project, Kabul
- James B. Heidel, Architect/Artist, Epigraphic Survey
heidel@uchicago.edu, 702-9524
- Anait Helmholz, Head Librarian, Epigraphic Survey
anaith@succeed.net
- Frank Helmholz, Stonemason, Epigraphic Survey
frankhelmholz8@gmail.com, 702-9524
- Richard Jasnow, Epigrapher Consultant, Epigraphic Survey
rjasnow@jhu.edu, 702-9524
- Hiroko Kariya, Conservator, Epigraphic Survey
hkariya@aol.com, 702-9524

Catherine Kenyon, Head, Public Education and Outreach (until 8/5/2016)

Jen Kimpton, Epigrapher, Epigraphic Survey
jkimpton@uchicago.edu, 702-9524

Yarko Kobylecky, Photographer, Epigraphic Survey
museumphoto@hotmail.com, 702-9524

John A. Larson, Museum Archivist, Museum
ja-larson@uchicago.edu, 702-9924

Susan Lezon, Photo Archivist and Photographer, Epigraphic Survey
suelezon@gmail.com, 702-9524

Erik Lindahl, Gallery Preparator, Museum
lindahl@uchicago.edu, 702-9516

Jill Carlotta Maher, Assistant to the Director, Epigraphic Survey
jillcarlottamaher@yahoo.com, 702-9524

Samwell Maher, Assistant Administrator, Epigraphic Survey
samwell.maher@hotmail.com, 702-9524

Leila Makdisi, Youth and Family Program Manager, Public Education (from 5/16/2016)
lnmakdisi@uchicago.edu, 702-0788

Helen McDonald, Registrar, Museum
helenmcd@uchicago.edu, 702-9518

Brittany F. Mullins, Associate Director of Development
bfmullins@uchicago.edu, 702-5062

Jennie Myers, Membership Program Manager (from 6/1/2016)
jmyers1@uchicago.edu, 834-8950

Carol Ng-He, School & Community Program Manager, Public Education
cnghe@uchicago.edu, 702-1158

Susan Osgood, Senior Artist, Epigraphic Survey
sittsu@sover.net, 702-9524

Mariana Perlinac, Assistant to the Director
oi-administration@uchicago.edu, 834-8098

Conor Power, Structural Engineer, Epigraphic Survey
conorpower@msn.com, 702-9524

Miller Prosser, Research Database Specialist, OCHRE Data Service
m-prosser@uchicago.edu, 702-1352

Seth Richardson, Managing Editor, *Journal of Near Eastern Studies*
seth1@uchicago.edu, 702-9552

Stephanie Rost, Postdoctoral Fellow
702-7497

FACULTY AND STAFF

Essam El Sayed, Finance Manager, Epigraphic Survey
essam_nadosb@yahoo.com, 702-9524

Sandra Schloen, Manager, OCHRE Data Service
sschloen@uchicago.edu, 702-1352

Julia Schmied, Blockyard and Archives Assistant/Epigrapher, Epigraphic Survey
julia.schmied@gmail.com, 702-9524

Leslie Schramer, Editor, Publications Office
leslie@uchicago.edu, 702-5967

Elinor Smith, Photo Archives Registrar, Epigraphic Survey
elliesmith34@gmail.com, 702-9524

Tracy Tajbl, Director of Development (until 2/15/2016)

Joshua Tulisak, Graphic Design and Preparation Assistant (from 12/1/2015)
tulisak@uchicago.edu, 702-9516

Thomas G. Urban, Managing Editor, Publications Office
turban@uchicago.edu, 702-5967

Krisztián Vértés, Artist, Epigraphic Survey
krisztian.vertés@gmail.com, 702-9524

Amy Weber, Membership Program Manager (until 3/18/2016)

Alison Whyte, Associate Conservator, Museum
aawhyte@uchicago.edu, 702-5181

Ilona Zsolnay, Postdoctoral Scholar
izsolnay@uchicago.edu , 702-7497

INFORMATION

The Oriental Institute
1155 East 58th Street
Chicago, Illinois 60637 USA

Museum Gallery Hours:

Tuesday and Thursday to Saturday 10:00 AM–5:00 PM
Wednesday 10:00 AM–8:00 PM
Sunday 10:00 AM–5:00 PM

Telephone Numbers (Area Code 773) and Electronic Addresses

Administrative Office, oi-administration@uchicago.edu, 702-9514
Archaeology Laboratory, 702-1407
Assyrian Dictionary Project, 702-9551
Computer Laboratory, 702-0989
Conservation Laboratory, 702-9519
Department of Near Eastern Languages and Civilizations, 702-9512
Demotic Dictionary Project, 702-9528
Development Office, 834-9775, oi-development@uchicago.edu
Director's Office, 834-8098
Epigraphic Survey, 702-9524
Facsimile, 702-9853
Hittite Dictionary Project, 702-9543
Journal of Near Eastern Studies, 702-9592
Membership Office, oi-membership@uchicago.edu, 702-9513
Museum Archives, 702-9520
Museum Information, 702-9520
Museum Office, oi-museum@uchicago.edu, 702-9520
Museum Registration, 702-9518
Public Education, oi-education@uchicago.edu, 702-9507
Publications Editorial Office, oi-publications@uchicago.edu, 702-5967
Research Archives, 702-9537
Security, 702-9522
Suq Gift and Book Shop, 702-9510
Suq Office, 702-9509
Volunteer Guides, 702-1845

World-Wide Web Address

<http://oi.uchicago.edu>
