

THE NIPPUR EXPEDITION

The Nippur Expedition was at home this past winter, so that we have no new and exciting archeological finds to report—only the day-by-day work of processing an immense amount of material for publication. However, even this job has its little excitements and satisfactions. During the past year the expedition's share of antiquities arrived from Baghdad and has been divided between the American Schools of Oriental Research and the Oriental Institute. Our share is now being cleaned and repaired so that it can be exhibited.

The winter of 1960/61 we spent at Nippur excavating the Inanna Temple. In ten building levels, there was a succession of superimposed temples which spanned almost three thousand years. In the temple built around 2,700 B.C., we found many offerings and gifts dedicated to the goddess: statues of worshippers, ritual stands, votive plaques, and inscribed vases.

The winter of 1962/63 we are expecting to go back to Nippur for the eighth season. We intend to divide our time between a further investigation of the Inanna Temple and additional exploration of the many, many important buildings and palaces that written sources say surround the Ekur of Enlil. If we can correctly lay out the search trenches, we may add a great deal to our knowledge of the Religious Quarter at Nippur.

RICHARD C. HAINES
Field Director



Site of the Inanna Temple at the end of 1960/61. At lower center a small pit shows the excavation down to the water table, which is about sixty feet below the original surface of the mound



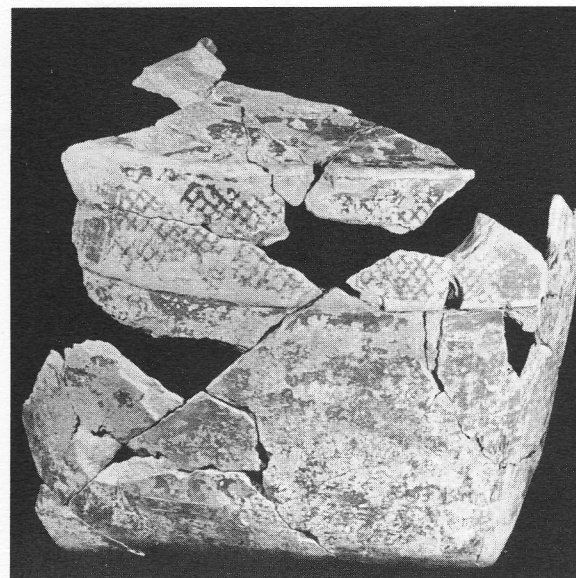
oi.uchicago.edu



Reliefs on the four sides of a small gypsum vessel found with a cache of votive objects in the Temple of Inanna during the 1960/61 season. From left to right the scenes depict a nude "hero" contending with two rearing bulls, a rearing goat eating from a large plant, a lion with upraised tail striding left, and a myihoto'gical figure—half man, half bull—in combat with a rearing lion



Mrs. Theodore Tiekken, one of our faithful volunteers, in the process of restoring a painted pot of the late Protoliterate period found in a sounding beneath the Temple of Inanna



The fragments of the pot temporarily joined together in the field



The reconstructed square vessel